

# Digi TransPort® WR21

Compact Enterprise Class Cellular Router

Compact, flexible, low-cost enterprise 2.5G/3G/4G cellular router for remote and mobile networking applications.



## Overview

Digi TransPort WR21 is a full-featured cellular router offering the flexibility to scale from basic connectivity applications to enterprise class routing and security solutions. With its high-performance architecture, Digi TransPort WR21 provides primary and backup connectivity and is designed for Wide Area Network connectivity including 2.5G/3G/4G networks and beyond. Optional Gobi™ module provides true HSPA+/EV-DO carrier diversity in a single solution.

Flexible power and connectivity options, along with extended temperature ranges make Digi TransPort WR21 a versatile product for both commercial and industrial environments.

The Digi TransPort WR21 supports enterprise software features for advanced security (stateful firewall, MAC filtering, VPN), redundancy (VRRP+, SureLink®), and management (SNMP, event logging, analyzer trace, and QOS), enabling the product to be used in PCI or NERC-CIP compliant applications.

Digi management solutions provide easy setup, configuration and maintenance of large installations of remote Digi TransPort devices. Digi Remote Manager™ offers web-based device management for remote Digi cellular routers and gateways.

### Related Products



Digi TransPort 41

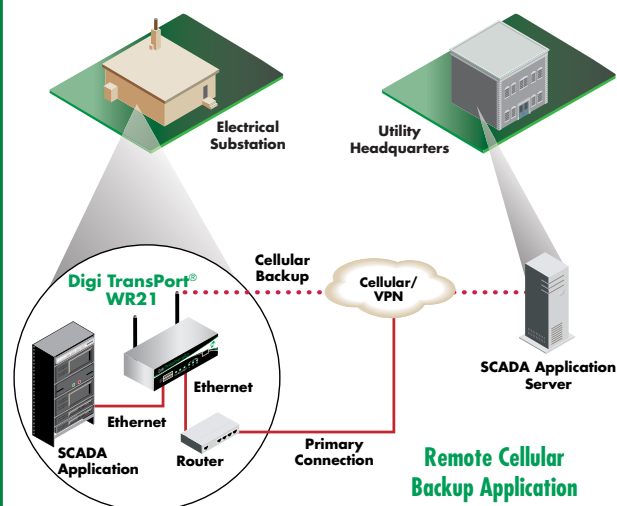


Digi Remote Management



Accessories

### Application Highlight



### Features/Benefits

- Compact, low-cost, flexible cellular routing platform with standard and enterprise feature sets
- Standard option includes basic routing and IP filtering; Enterprise option includes advanced routing protocols, VPN and stateful firewall
- High-performance architecture, flexible power and extended operating temperature
- 2.5G/3G/4G cellular interface including: including LTE, GSM:EDGE, HSPA, HSPA+ and CDMA: 1xRTT, EV-DO
- RS-232 serial and 10/100 Ethernet or RS-232/422/485 serial and 2-port Ethernet switch
- Digi Remote Manager software for easy setup, configuration, and maintenances



# Specifications

# Digi TransPort® WR21

## Wireless Interfaces

### WWAN\*\*

LTE - EMEA (L1)	800/850/900/1800/1900/2100/2600MHz; 3G fall back to 850/900/1900/2100MHz and 2G fall back to 850/900/1800/1900MHz; Transfer Rate (max): 50 Mbps Up, 100 Mbps Down
LTE - North America (L5)	Multi-Carrier (Verizon, AT&T, and Sprint) 700/850/1700(AWS)/1900 MHz; 2G/3G GSM fall back to 850/900/1700AWS/1800/1900/2100MHz; 2G/3G CDMA fall back to 800/1900MHz; Transfer Rate (max): 50 Mbps Up, 100 Mbps Down
LTE - North America (L6)	700/850/1700(AWS)/1900MHz; 2G/3G fall back to 850/1900MHz; Transfer Rate (max): 50 Mbps Up, 100 Mbps Down
LTE - Verizon (L8)	700/1700(AWS)MHz; No 2G/3G fall back; Transfer Rate (max): 50 Mbps Up, 100 Mbps Down
HSPA+ (U9)	850/900/1700 (AWS)/1900/2100MHz; Transfer Rate (max): 5.76 Mbps Up, 21 Mbps Down
Edge (E1)	GPRS/EDGE Class 10; 850/900/1800/1900 MHz; Transfer rate (max): 236 Kbps up/down
CDMA EV-DO (Dx) *	450 MHz; EV-DO Rev B; R-UIM support; Transfer rate (max): 14.7 Mbps Up; 5.4 Mbps Down
CDMA 1xRTT (Bx) *	800/1900 MHz; Transfer rate (max): 153Kbps up/down
GSM-R (R5) *	900/1800/1900MHz (TRM-5); GPRS Class 10; Transfer rate (max): 42.8 Kbps Up, 85.6 Kbps Down42.8 Kbps Up, 85.6 Kbps Down
Connectors	Ux, Lx variants: 2 x 50 Ω SMA (Center pin: female); E1, Dx, Bx variants: 1 x 50 Ω SMA (Center pin: female)
SIM Slots	2, Mini-SIM (2FF)
SIM Security	Optional SIM slot cover plate

### Other

Additional Features	Send GPS via UDP/IP, TCP/IP (up to two destinations) or serial; Customize and/or send data using Python; GPS status query; Time source capable
---------------------	--

## Wired Interfaces

### Serial

Ports	1
Standard	Option of RS-232 or RS-232/422/485
Async/Sync	Async
DTE/DCE	DCE
Signal Support	TXD, RXD, RTS, CTS, DTR, DCD, DSR, RI
Flow Control	Software (XON/XOFF), Hardware supported
COM Port Redirector	RealPort®
Connector	DB-9

### Ethernet

Ports	2
Standard	IEEE 802.3
Physical Layer	10/100 Base-T
Data Rate	10/100 Mbit/s
Mode	Full or Half duplex
Interface	Auto MDI/MDIX
Connector	RJ-45

### USB

Ports	1
Standard	USB 2.0
Signaling	High-speed
Connector	Type A

### Other

I/O and DSL	N/A
-------------	-----

## Management

Remote Management	Digi Remote Manager (cloud based); SNMP v1/v2c/v3 (user installed/managed)
Local Management	Web interface (HTTP/HTTPS); CLI (Telnet, SSH, SMS, Serial Port)
Management/ Troubleshooting Tools	FTP, SFTP, SCP; Protocol analyzer with PCAP for Wireshark; Event logging with Syslog and SMTP; NTP/SNTP
Memory	128 MB NAND Flash/128 MB DDR2 SDRAM

\*\* Transfer rates are theoretical and network operator dependent

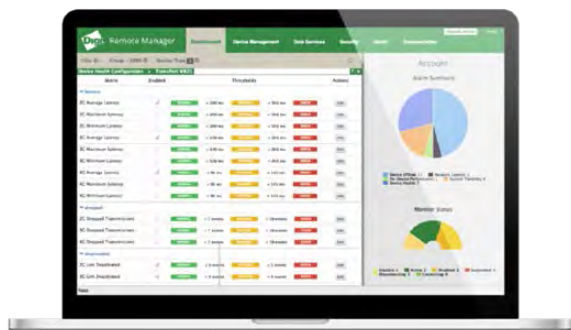
Specifications   Digi TransPort® WR21	
<b>Power</b>	
Input	9-30 VDC
Consumption	6W max, 4W typical
Connector	Depending on model: Locking barrel or screw-down removeable terminal block
DC Power Cord*	Locking barrel to bare wire
DC Power Supply*	100-240 VAC 50/60 Hz; Option of standard temperature or extended temperature
Battery Backup	None
<b>Physical</b>	
Dimensions (L x W x H)	3.9 in x 5.2 in x 1.3 in (100 mm x 131 mm x 32 mm)
Weight	1.08 lb (0.49 kg)
Status LEDs	Power, Service, WWAN, 3x Signal strength
Enclosure Material/Rating	Industrial (Metal)/ IP50
Mounting	Brackets for wall mount & DIN rail sold separately
<b>Environmental</b>	
Operating Temperature ***	-35° C to +70° C
Storage Temperature	-40° C to +85° C
Relative Humidity	0% to 95% (non-condensing) @ 25° C
Ethernet Isolation	1.5 kV RMS
Serial Port Protection (ESD)	15 kV
Hazardous (Class 1 Div 2)	Optional
Conformal Coating	N/A
<b>Approvals</b>	
GSM/UMTS	PTCRB, NAPRD.03, GCF-CC, R&TTE, EN 301 511
CDMA/EV-DO	CDG TIA/EIA-690, CDG TIA/EIA-98-E
Cellular Carriers	Certified by most major carriers. See <a href="http://www.digi.com">www.digi.com</a> for a full list.
Safety	UL 60950, CSA 22.2 No. 60950, EN60950
Emissions/Immunity	CE, FCC Part 15 Class B, AS/NZS CISPR 22, EN55024, EN55022 Class B
<b>Warranty</b>	
Product Warranty	5 years

Enterprise Software	
Protocols	HTTP, HTTPS, FTP, SFTP, SSL, SMTP, SNMP (v1/v2c/v3), SSH, Telnet and CLI for web management; remote management via Digi Remote Manager; SMS management, protocol analyzer, ability to capture PCAP for use with Wireshark; DynDNS; Dynamic DNS client compatible with BIND9/No-IP/DynDNS
Security/VPN	Stateful inspection firewall with scripting, address and port translation; VPN: IPSec with IKEv1, IKEv2, NAT Traversal; SSL, SSLv2, SSLv3, FIPS 197, Open VPN client and server; PPTP, L2TP; VPN Tunnels included: 5; Maximum VPN Tunnels available: 5; Cryptology: SHA-1, MD5, RSA; Encryption: DES, 3DES and AES up to 256-bit (CBC mode for IPsec); Authentication: RADIUS, TACACS+, SCEP for X.509 certificates; Content Filtering (via 3rd party); MAC Address Filtering; VLAN support; Ethernet Port Isolation
Routing/Failover	IP pass-through; NAT, NAT with IP Port Forwarding; Ethernet Bridging; GRE; Multicast Routing; Routing Protocols: PPP, PPPoE, RIP (v1, v2) OSPF, SRI, BGP, iGMP routing (multicast); IPv6 (firmware upgradable); RSTP (Rapid Spanning Tree Protocol); IP Failover: VRRP, VRRP+TM; Automatic failover/failback to second GSM network/Standby APN; Verizon NEMO/DMNR for Primary Wireless Access
Other Protocols	DHCP; Dynamic DNS client compatible with BIND9/No-IP/DynDNS; QoS via TOS/DSCP/WRED
Specialty/Legacy Protocols	RealPort®; Modbus UDP/TCP to serial; X.25 including XOT, SNA/IP, TPAD and PAD; Protocol switch*

\* Optional hardware. Lead time and/or minimum order quantity may apply. Contact Digi Sales for details.

\*\*\* Reduced cellular performance may occur above +60° C. Standard temperature power supplies may reduce temperature range.

## Digi Remote Manager



### Capabilities

- Centralized management of remote devices over 3G/4G LTE
- Define standard configurations and automatically monitor individual devices for PCI security compliance
- Report and alert on performance statistics, including connection history, signal quality, latency, data usage and packet loss.
- No servers or applications to operate & maintain
- Complete tasks for your entire device network in minutes
- Edit configurations & update firmware for your individual devices or groups
- Monitor the status and location of your remote device via a web browser
- Active or deactivate cellular lines and monitor data to ensure you never incur overage charges

### Infrastructure

- Hosted in multiple commercial-grade SAS 70 certified facilities in North America and Europe
- Superior availability, operating to 99.9% or greater
- Open APIs available to support application development

### Security

- Certified SSAE-16 and ISO27001 facilities
- Member of the Cloud Security Alliance
- Over 175 Security Controls in place to protect your data
- Enables compliance with security frameworks like PCI, HIPAA, NIST and more
- Earned SkyHigh's Cloud Trust Program highest ranking of Enterprise-Ready

## Product Images

### Digi TransPort WR21



You can purchase with confidence knowing that Digi is always available to serve you with expert technical support and our industry leading warranty. For detailed information visit [www.digi.com/support](http://www.digi.com/support).

91001738  
B12/615

**Digi International  
Worldwide HQ**  
877-912-3444  
952-912-3444  
[www.digi.com](http://www.digi.com)

**Digi International  
France**  
+33-1-55-61-98-98  
[www.digi.fr](http://www.digi.fr)

**Digi International  
Japan**  
+81-3-5428-0261  
[www.digi-intl.co.jp](http://www.digi-intl.co.jp)

**Digi International  
Singapore**  
+65-6213-5380

**Digi International  
China**  
+86-21-50492199  
[www.digi.com.cn](http://www.digi.com.cn)



[www.digi.com](http://www.digi.com)