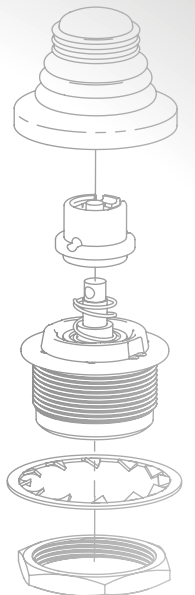
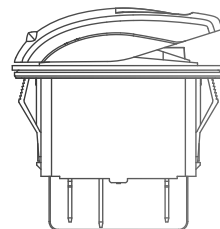
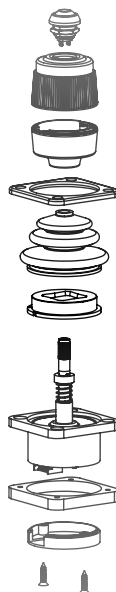
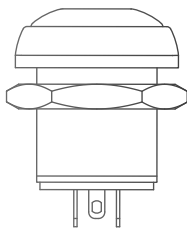
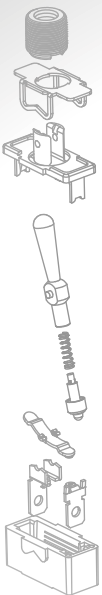


APEM



MATERIAL HANDLING



**A WORLD OF
SWITCHING CAPABILITIES**

APEM IN MATERIAL HANDLING

APEM is a leading manufacturer of **high-quality Human Machine Interface (HMI)** products with over **20 years' experience** in the material handling market.

APEM is vertically integrated offering uncompromised reliability through its custom product development, manufacturing excellence and outstanding service.

APEM offers a broad range of HMI components designed for the material handling market, including toggles, rockers, pushbutton switches, LED indicators and paddle controls, as well as keyboards and joysticks.

ROBUST DESIGN

DEDICATED TO
SUPPORTING YOUR
CUSTOM DESIGN



A BROAD RANGE OF PRODUCTS AND SOLUTIONS

APEM OFFERS

① STANDARD PRODUCTS



② CUSTOMIZED PRODUCTS

APEM offers unique expertise in HMI product customization.

With robust development processes, based on the automotive APQP method, APEM supports custom design specifications for exclusive HMI requirements.



③ SAFETY INTEGRATION POLICY

APEM develops ISO/EN safety compatible products, combining hardware and software solutions which provide customers with integrated HMI products, bringing high levels of safety to their systems. APEM follows the evolution of safety standards in different areas to ensure correct PL (performance level) as well as compatible SIL (safety integration level) of customer applications.

④ CAPABILITY TO ADD ELECTRONICS AND SOFTWARE FUNCTIONS

PERFORMANCE - APEM's fully integrated front panel solutions ensure the highest performance to mechanical, electrical, environmental and EMC/EMI standards.

EFFICIENT INTEGRATION - APEM can design electronics and connector systems to fit most applications.



COMMUNICATION PROTOCOLS
CANbus (J1939, CANopen),
RS422, RS485, USB...

INTEGRATED BOOT LOADER
Diagnostic and software
upgrade capability

**ELECTRONICS AND
SOFTWARE DESIGN**

LOW POWER

BIT SOFTWARE
Real time Built-In-Test

FILTERING & PROTECTION
ESD, EMI, filter and protection
of network...

INTEGRATED DIMMING

OUR PRODUCTS

APEM OFFERS THE WIDEST RANGE OF HMI COMPONENTS & SOLUTIONS WITH OVER 125,000 STANDARD PART NUMBERS INCLUDING SWITCHES, INDICATORS, JOYSTICKS AND SWITCH PANELS.

PANEL SWITCHES



CT SERIES 6
SEALED, ROBUST TOGGLE SWITCHES



12000 SERIES 7
DESIGNED TO HIGH PERFORMANCE STANDARDS



13000 SERIES 8
ROBUST FOR DEMANDING APPLICATIONS



IA SERIES 9
LOW PROFILE WITH ELASTOMER MEMBRANE SEAL



FD SERIES 10
DOUBLE ICON ILLUMINATED PUSHBUTTONS



IHS/IHL SERIES 11
LONG LIFE PUSHBUTTON CONTROL



KR/KL SERIES 12
SEALED CUSTOMIZABLE ROCKER SWITCHES



SEALING BOOTS 13
PROTECT AGAINST DUST, SAND AND WATER



ES SERIES 14
DESIGNED FOR EXTREME CONDITIONS



A02ES-I/A02ES-H SERIES 15
ERGONOMIC EMERGENCY STOP SWITCHES

INDICATORS



Q SERIES 16/17
LARGE VARIETY OF INDICATORS

PCB SWITCHES



MULTIMEC 3 & 5 SERIES 18
ABSOLUTE RELIABILITY AND FUNCTIONALITY

JOYSTICKS



FR SERIES 19
LONG LIFE HALL EFFECT F-N-R CONTROL



TS SERIES 20
MINIATURE JOYSTICK FOR INDUSTRIAL APPLICATIONS



HR SERIES 21
UNIQUE THUMB CONTROL MECHANISM



PC SERIES 22
PROPORTIONAL ERGONOMIC HANDHELD DEVICE



BD/BF SERIES 23
LOW POWER CONSUMPTION CUSTOMIZABLE SINGLE AXIS PADDLES



1000 SERIES 24
COST EFFECTIVE SWITCHING JOYSTICKS



HF SERIES 25
ENVIRONMENTALLY SEALED, FINGER OPERATED



3000 SERIES 26
ROBUST, FINGERTIP OPERATED CUSTOM HANDLES



MS SERIES 27
ERGONOMIC PALM GRIP CONTROLLERS



CJ SERIES 28
COMFORTABLE HAND GRIP CONTROL

SWITCH PANELS



**CUSTOMIZABLE
PANEL OPTION** 29
COMPACT SIZES FOR OPTIMUM EFFICIENCY



**ELECTRONICS &
SOFTWARE** 30
ON DEMAND ELECTRONICS AND SOFTWARE INTEGRATION



CUSTOM CAPABILITIES 31
CUSTOM PRODUCTS DEVELOPED EXCLUSIVELY FOR UNIQUE CUSTOMERS AND APPLICATIONS

CT SERIES

SEALED TOGGLE SWITCH



SEALED, ROBUST TOGGLE SWITCHES

- Completely sealed switching chamber
- Three types of terminals
- UL approved
- Large volume toggle

SERIES	APPROVALS	POLES	MAXIMUM RATINGS	BUSHING DIMENSIONS	TERMINAL OPTIONS			MOUNTING OPTIONS	SEALING
					Solder lugs	Quick-connect	Screw		
CT	UL	1, 2	15A 28VDC	11.9 mm dia. (15/32 in)	X	X	X	Panel	IP67

TOP APPLICATIONS: TAIL LIFTS, CRANES, WIRELESS REMOTES, LIFT PLATFORMS, SCISSOR LIFTS



12000 SERIES

PROFESSIONAL GRADE TOGGLE SWITCH



DESIGNED TO HIGH
PERFORMANCE
STANDARDS

- Robust for high specification environments
- Completely sealed construction
- 1, 2 & 3 locking lever positions

SERIES	APPROVALS	POLES	MAXIMUM RATINGS	BUSHING DIMENSIONS	TERMINAL OPTIONS			MOUNTING OPTIONS	SEALING
					Solder lugs	Quick-connect	Screw		
12000	CECC/MIL	2, 3, 4	4A 30VDC	11.92 mm dia. (15/32 in)	X	X	X	Panel, PCB, Through-hole	IP67

TOP APPLICATIONS: CRANES, WIRELESS REMOTES



13000 SERIES

UNIQUE PUSH/PULL PUSHBUTTON



ROBUST FOR DEMANDING APPLICATIONS

- Low, behind panel profile
- Anodized actuator, available in multiple colors
- Quick break contacts
- Double shell - sealed construction

SERIES	POLES	MAXIMUM RATINGS	BUSHING DIMENSIONS	TERMINAL OPTIONS			MOUNTING OPTIONS	SEALING
				Solder lugs	Quick-connect	Screw		
13000	2, 3	4A 28VDC 10A 24VDC	15 mm dia. (.590 in)	x			Panel	IP67

TOP APPLICATIONS: WIRELESS REMOTE CONTROLS, HAND-HELD CRANE CONTROLS



IA SERIES

LOW PROFILE SEALED PUSHBUTTON

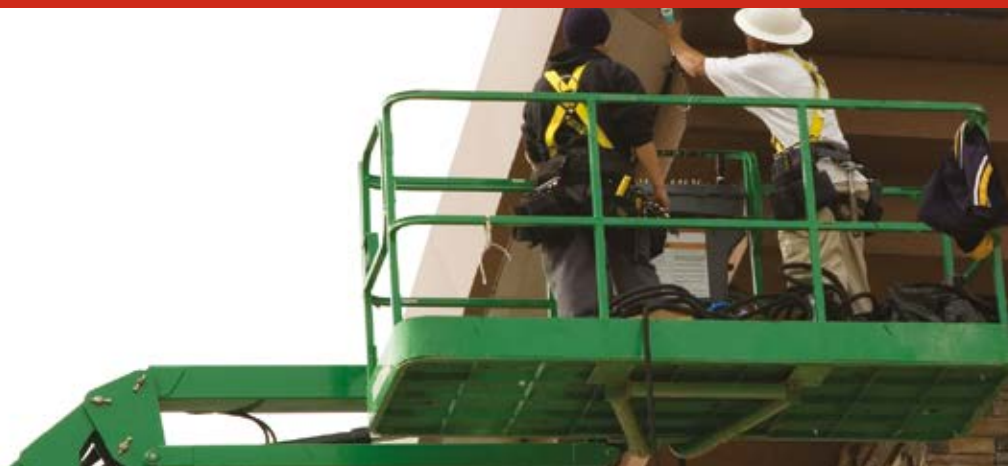


LOW PROFILE WITH ELASTOMER MEMBRANE SEAL

- Resistant to frost, sand & hydrocarbons
- Tactile feedback
- Front panel sealed up to IP67
- Low profile, soft membrane actuator

SERIES	POLES	MAXIMUM RATINGS	BUSHING DIMENSIONS	TERMINAL OPTIONS	MOUNTING OPTIONS	SEALING
				Flying leads		
IA	1	2A 24VDC	16.0 mm dia. (.629 in)	X	Panel	IP67

TOP APPLICATIONS: HANDLE CONTROLS, CRANES, WIRELESS REMOTE CONTROLS, SCISSOR LIFTS



FD SERIES

DOUBLE ICON ILLUMINATED PUSHBUTTON



DOUBLE ICON ILLUMINATED PUSHBUTTONS

- 3 standard legends (0/1, START/STOP, ON/OFF)
- Sealed up to IP69K
- Threaded or snap-in versions

SERIES	POLES	MAXIMUM RATINGS	BUSHING DIMENSIONS	TERMINAL OPTIONS			MOUNTING OPTIONS	SEALING	ILLUMINATION
				Solder lugs	Quick-connect	Screw			
FD	1, 2	4A 12VDC 200mA 12VDC	Ø24 (.944) Ø26 (1.024)	x			Panel, Snap-in or threaded bushing	IP69K (threaded bushing)	x

TOP APPLICATIONS: CRANES, BOOM LIFTS, FORK TRUCKS



IHS & IHL SERIES

HALL EFFECT PUSHBUTTON



LONG LIFE PUSHBUTTON CONTROL

- Proportional control
- Five million lifecycles
- Sealed to IP67
- Low and high actuators

SERIES	MAXIMUM RATINGS	BUSHING DIMENSIONS	TERMINAL OPTIONS		MOUNTING OPTIONS	SEALING
			Flying leads	Solder lugs		
IHS IHL	5mA 24VDC 1,25mA 4,5VDC	Ø12 (.472)	X		Panel	IP67

TOP APPLICATIONS: REMOTE CONTROLS, PALLET JACKS, FORKLIFTS, CRANE CONTROLS, SCISSOR LIFTS



KR/KL SERIES

ILLUMINATED ROCKER SWITCH



SEALED CUSTOMIZABLE ROCKER SWITCHES

- Laser etched legends
- Illuminated or non-illuminated
- Large selection of colors & symbols
- Large variety of terminal options
- Patented intuitive design (KL)

SERIES	POLES	MAXIMUM RATINGS	BUSHING DIMENSIONS	TERMINAL OPTIONS			MOUNTING OPTIONS	SEALING	ILLUMINATION
				Solder lugs	Quick-connect	Screw			
KR	1, 2	10A 24VDC	36.8 x 21.09	X	X	X	Panel	IP68	X
KL	1, 2	10A 24VDC	36.8 x 21.08	X	X	X	Panel	IP68	X

TOP APPLICATIONS: CRANES, SCISSOR LIFTS, BOOM LIFTS, FORK TRUCKS



SEALING BOOTS

TOGGLE & PUSHBUTTON BOOTS



PROTECT
AGAINST DUST,
SAND & WATER

- Available for toggle and pushbutton switches
- Wide variety of colors, shapes & sizes
- Available in silicone and neoprene

SERIES	BOOT MATERIAL	NUT MATERIAL	OPERATING TEMPERATURE	TEMPERATURE RANGE		ELASTICITY	MECHANICAL RESISTANCE
				LOW	HIGH		
Boots	Neoprene or silicone	Brass, nickel plated, matte black	SILICONE -40°C to +85°C	Best	Best	Best	Good
			NEOPRENE -20°C to +50°C	Good	Better	Good	Best

TOP APPLICATIONS: ALL OUTDOOR OR HARSH ENVIRONMENTS



ES SERIES

HEAVY DUTY METAL EMERGENCY STOP



DESIGNED
FOR EXTREME
CONDITIONS

- Anodized metal actuator
- Impact resistant to IK10
- Sealed to IP65, IP67 & IP69K
- Locked / unlocked status indicator

SERIES	POLES	MAXIMUM RATINGS	BUSHING DIMENSIONS	TERMINAL OPTIONS		MOUNTING OPTIONS	SEALING
				Solder lugs	PCB		
ES	2, 3	1A 24VDC	Ø22,28 (.877)	X	X	Panel	IP65, IP67 & IP69K

TOP APPLICATIONS: CRANES, SCISSOR LIFTS, BOOM LIFTS, FORK TRUCKS



A02ES-I/A02ES-H SERIES

EMERGENCY STOP SWITCH



ERGONOMIC EMERGENCY STOP SWITCHES

- Optional independent backlighting of operator
- Safe and easy to operate, easy to mount
- Exclusive built-in-safety design (A02ES-H)
- Approved to EN60947-5-5, EN60547-5-1, UL 508 and CSA

SERIES	APPROVALS	POLES	MAXIMUM RATINGS	BUSHING DIMENSIONS	TERMINAL OPTIONS	MOUNTING OPTIONS	SEALING	ILLUMINATION
					Connector			
A02ES-I	EN 60947-5-5, UL 508, CSA	1, 2	4A 24VDC 8A 24VDC	22,5 (0,885)	x	Panel	IP65	x
A02ES-H	EN 60947-5-5, UL 508, CSA	2	3A 240VAC 2A 30V	22,5 (0,885)	x	Panel	IP65	Optional

TOP APPLICATIONS: CRANES, SCISSOR LIFTS, BOOM LIFTS, FORK TRUCKS, REMOTE CONTROLS



Q SERIES STANDARD

PROFESSIONAL GRADE LED INDICATORS



LARGE VARIETY OF LED INDICATORS

- Available in seven panel cut-out sizes
- Chrome, black, satin and anodized bezel finishes
- Wide variety of LED colors including hyper bright (diffused) and super bright (water clear)
- Customizable engraving and illumination

SERIES	PANEL CUT-OUT	MAXIMUM RATING	BEZEL STYLE	BEZEL FINISH	TERMINAL OPTIONS				TYPE OF ILLUMINATION	LED COLORS
					Solder lugs	Faston	Pins	Wires		
Q	Ø6, 8, 12, 14, 16, 19, 22	2VDC -220VAC	Prominent, Recessed & Flushed	Bright, Satin & Black Chrome	X	X	X	X	Fixed light, flashing bi-color, tri-color, night vision	5 standard colors, 5 superbright colors, 4 hyperbright colors

TOP APPLICATIONS: ANY PANEL MOUNT CONFIGURATION



Q SERIES CUSTOM

PROFESSIONAL CUSTOM LED INDICATORS



CUSTOMIZED TO YOUR REQUIREMENTS

- Custom engraving and reverse engraving
- Secret until lit polycarbonate decals
- Customer specified wire and connector assemblies
- Specific custom voltage ranges
- Suitable for mimic panel assembly

SERIES	PANEL CUT-OUT	MAXIMUM RATING	BEZEL STYLE	BEZEL FINISH	TERMINAL OPTIONS				TYPE OF ILLUMINATION	LED COLORS
					Solder lugs	Faston	Pins	Wires		
Q	Ø6, 8, 12, 14, 16, 19, 22	2VDC -220VAC	Prominent, Recessed & Flushed	Bright, Satin & Black Chrome	X	X	X	X	Fixed light, flashing bi-color, tri-color, night vision	5 standard colors, 5 superbright colors , 4 hyperbright colors

TOP APPLICATIONS: ANY PANEL MOUNT CONFIGURATION



MULTIMEC 3 & 5 SERIES

HIGH PERFORMANCE PCB SWITCHES



ABSOLUTE
RELIABILITY AND
FUNCTIONALITY

- Wide range of standard keycaps
- Switch and keycap options designed for using under an overlay
- Superior sealing
- Superior illumination with integrated chip-LEDs

SERIES	POLES	Function	MAXIMUM RATING	MOUNTING OPTIONS	SEALING	MECHANICAL LIFE
Multimec 3 & 5 series	Single pole / momentary	NO & NC/NO	50mA - 24VDC	Through hole or SMT mounting	IP67	10 million

TOP APPLICATIONS: CONTROLLERS FOR FORKLIFTS & CRANES



FR SERIES

THREE POSITION THUMB CONTROL



LONG LIFE
HALL EFFECT
F-N-R CONTROL

- Three position thumb control
- Forward/neutral/reverse function
- Several handles options
- Submersible to 1m (3.28ft) per IP68
- Drop-in or rear mounting

SERIES	MECHANICAL LIFECYCLES	AXIS	TECHNOLOGY Hall effect	MOUNTING OPTIONS	SEALING
FR	3 million	1	X	Drop-in or rear mounting	IP68

TOP APPLICATIONS: FORK TRUCKS, CARGO LOADERS



TS SERIES

PROPORTIONAL THUMBSTICK



MINIATURE JOYSTICK FOR INDUSTRIAL APPLICATIONS

- Metal bushing & pushbutton options
- One or two axis
- Large variety of handle options
- Submersible to 1m (3.28ft) per IP68

SERIES	MECHANICAL LIFECYCLES	AXIS	TECHNOLOGY	OUTPUT OPTIONS						MOUNTING OPTIONS	SEALING
				Single	Dual	Analog	PWM	USB	CANbus		
TS	1 million	1, 2	Hall effect			x		x		Drop-in or rear mounting	IP68

TOP APPLICATIONS: REMOTE CONTROLS, CRANES, SCISSOR LIFTS, BOOM LIFTS



HR SERIES

PROPORTIONAL THUMBWHEEL



UNIQUE THUMB CONTROL MECHANISM

- Backlighting & detent options available
- Self centering spring return mechanism
- Non-contacting Hall effect technology
- Patented friction-hold version

SERIES	MECHANICAL LIFECYCLES	AXIS	TECHNOLOGY	OUTPUT OPTIONS			MOUNTING OPTIONS	SEALING
				Single	Dual	Analog		
HR	5 million	1	Hall effect	X	X	X	Rear mounting	IP68

TOP APPLICATIONS: REMOTE CONTROLS, CRANES, SCISSOR LIFTS, BOOM LIFTS



PC SERIES

HANDHELD PENDANT CONTROLLER



PROPORTIONAL ERGONOMIC HANDHELD DEVICE

- USB and analog output
- Lightweight, one hand design
- Easily configured with APEM components
- Custom configured to order

SERIES	MECHANICAL LIFECYCLES	AXIS	TECHNOLOGY	OUTPUT OPTION						MOUNTING OPTIONS	SEALING
				Single	Dual	Analog	PWM	USB	CANbus		
PC						X		X			VARIES, DEPENDENT ON CONFIGURATION

TOP APPLICATIONS: SCISSOR LIFTS, REMOTE CONTROLS, BOOM LIFTS, TRUCK TAIL LIFTS



BD/BF SERIES

HALL EFFECT JOYSTICK PADDLES



LOW POWER
CONSUMPTION
CUSTOMIZABLE
SINGLE AXIS PADDLES

- Analog and digital functions including PWM output
- Different actuator styles available
- Several interchangeable color insert options
- Minimal below panel depth with stackable mounting

SERIES	MECHANICAL LIFECYCLES	AXIS	TECHNOLOGY	OUTPUT OPTIONS				MOUNTING OPTIONS	SEALING
				Single	PWM	DUAL	CANbus		
BF	5 million	1	Hall effect		x	x		Drop-in	IP67
BD	5 million	1	Hall effect		x	x		Drop-in	IP67

TOP APPLICATIONS: WIRELESS REMOTE CONTROLS, CRANES, TELEHANDLERS



1000 SERIES

COMPACT SWITCHING JOYSTICK



COST EFFECTIVE SWITCHING JOYSTICKS

- Compact size with V3 or V4 switches
- Single or dual axis
- Single or double pole
- Bushing or screw mount available
- Additional switch joysticks available
- Wide selection of handles

SERIES	MECHANICAL LIFECYCLES	AXIS	TECHNOLOGY	SWITCHING POINTS (degrees)				MOUNTING OPTIONS	SEALING
				Analog	PWM	USB	CANbus		
1000	5 million	1,2	Switching (1,2 poles)	x				22mm bushing, 4 point screw	Up to IP67

TOP APPLICATIONS: TRUCK TAIL LIFTS, PALLET JACKS, LIFT ACCESSORIES



HF SERIES

MULTI-AXIS HALL EFFECT JOYSTICK



ENVIRONMENTALLY
SEALED, FINGER
OPERATED

- Hall effect technology
- Connectorized housing
- Ten handle options
- Up to 3 axis of control

SERIES	MECHANICAL LIFECYCLES	AXIS	TECHNOLOGY	OUTPUT OPTIONS		MOUNTING OPTIONS	SEALING
				Analog	USB		
HF	5 million	1, 2, 3	Hall effect	X	x	Drop-in or Rear mounting	IP67

TOP APPLICATIONS: WIRELESS REMOTE CONTROLS



3000 SERIES

LOW PROFILE HALL EFFECT JOYSTICK



ROBUST
FINGERTIP
OPERATED
CUSTOM HANDLES

- Minimal install depth of <20mm
- One, two or three axis with optional pushbuttons
- Rated for 10 million lifecycles
- Analog or PWM outputs
- Panel sealed to IP65

SERIES	MECHANICAL LIFECYCLES	AXIS	TECHNOLOGY	OUTPUT OPTIONS				MOUNTING OPTIONS	SEALING
				Analog	Single	Dual	PWM		
3000	10 million	1, 2, 3	Hall effect	x	x	x	x	Drop-in or Rear mounting	IP65, IP67

TOP APPLICATIONS: WIRELESS REMOTE CONTROLS, PALLET JACKS, BUCKET TRUCKS



MS SERIES

MID-SIZE HALL EFFECT JOYSTICK



ERGONOMIC PALM GRIP CONTROLLERS

- Ergonomic, 3 axis palm grip control
- Low profile, compact size
- Available with CANbus J1939 or CANopen

SERIES	MECHANICAL LIFECYCLES	AXIS	TECHNOLOGY	OUTPUT OPTIONS			MOUNTING OPTIONS	SEALING
				Analog	USB	CANbus		
MS	10 million	1, 2, 3	Hall effect	x	x	x	Drop-in or Rear mounting	IP67

TOP APPLICATIONS: BUCKET TRUCKS, SCISSOR LIFTS, BOOM LIFTS



CJ SERIES

VERSATILE, MULTIFUNCTION JOYSTICK



COMFORTABLE HAND GRIP CONTROL

- Hall effect technology
- Ergonomic and versatile design
- Redundant output available
- Available with CANbus, J1939, CANopen and USB outputs

SERIES	MECHANICAL LIFECYCLES	AXIS	TECHNOLOGY	OUTPUT OPTIONS			MOUNTING OPTIONS	SEALING
				Analog	USB	CANbus		
CJ	10 million	1, 2	Hall effect	X	X	X		IP67

TOP APPLICATIONS: CRANES, TELEHANDLERS, SCISSOR LIFTS, BOOM LIFTS



SWITCH PANELS

CUSTOMIZABLE PANEL OPTIONS



COMPACT SIZES FOR OPTIMUM EFFICIENCY

- Quick front assembly
- Market standard panel cut-out (six button version)
- Integration of communication protocol such as CAN & LIN
- Indicators, bargraph integration



ELASTOMER KEYPADS

- Complete APEM joystick integration
- High density keyboard
- Quality tactile feel
- Sealed up to IP67
- Backlit
- CAN or wire output

ENHANCED MEMBRANE KEYPADS

- Cable output
- Slim design
- Sealed up to IP67
- Impact resistant to IK10
- High performance at a low cost

BUTTON BOXES

- IP68 sealed buttons
- Standard 22mm dia. long course interface
- Less than 22mm below panel
- CAN, USB or RS output
- ISO 13849 compatible
- Shock protection option available

TOP APPLICATIONS: BUCKET TRUCKS, SCISSOR LIFTS, BOOM LIFTS



ELECTRONICS & SOFTWARE

CUSTOMIZABLE INTEGRATION



ON DEMAND ELECTRONICS & SOFTWARE INTEGRATION

- Communication protocols: CANbus, RS485/422, USB...
- Integration possible with all APEM products and solutions

MATERIAL HANDLING

Communication protocols: CANbus (J1939, CANopen), RS485, RS422, USB...

Low power management

BIT Software: real time Built In Test

Integrated Dimming

Integrated Boot Loader: Diagnostic and software upgrade capability

TOP APPLICATIONS: ALL MATERIAL HANDLING MACHINERY



CUSTOM CAPABILITIES



CUSTOMER EXCLUSIVE CUSTOM PRODUCTS CO-DEVELOPED WITH CUSTOMERS

★ PRECISE AND
VISUALLY APPEALING
DIGITAL PRINTING

★ INTEGRATION OF CAN
COMMUNICATION
PROTOCOL

★ ROBUST CONTACTS AND
RESISTANT MATERIALS FOR
LONG LIFE EXPECTANCY

APEM EXCLUSIVE

APEM offers a large range of more than 125 000 part numbers consisting of switches, indicators, joysticks and keypads in different colors, markings, finishes, shapes and dimensions... creating an unlimited combination of possibilities.

APEM develops complete interface solutions

combining components (switches, keypads, indicators, joysticks), standard electronic boards and programming.

An APEM team professional is happy to assist you in the development of these complete turnkey solutions meeting your specific requirements, with responsiveness and flexibility.

WORLDWIDE SALES & CUSTOMER SUPPORT

AMERICAS



USA

63 Neck Road
HAVERHILL, MA 01835
Tel: (+1) 978 372 1602
Fax: (+1) 978 372 3534
info@apem.com

USA

970 Park Center Drive
VISTA, CA 92081
Tel: (+1) 760 598 2518
Fax: (+1) 760 598 2524
info@apem.com

EMEA



BENELUX

Avenue Excelsiorlaan 21
1930 ZAVENTEM
Belgium
Tel B: (+32) 27 25 05 00
Tel NL: (+31) (70) 799 91 51
Fax: (+32) 27 25 22 00
sales@apemswitches.be

FRANCE

55, avenue Edouard Herriot
BP1
82303 CAUSSADE Cedex
Tel: (+33) 5 63 93 14 98
Fax: (+33) 5 63 93 19 03
commercial@apem.fr

GERMANY

Gewerbehof Giesing
Paulsdorfferstr. 34, 2. OG
D-81549 MUNICH
Tel: (+49) 89 45 99 11 0
Fax: (+49) 89 48 10 39
info@apem.de

ITALY

Via Marconi 147G
12030 MARENE (CN)
Tel: (+39) 0172 74 31 70
Fax: (+39) 0172 74 31 71
apem.italia@apem.it

SWEDEN

Isafjordsgatan 35
S-16440 KISTA
Tel: (+46) 8 626 38 00
Fax: (+46) 8 626 82 49
info@apem.se

UNITED KINGDOM

Drakes Drive
LONG CRENDON, Bucks HP18 9BA
England
Tel: (+44) 1 844 202400
Fax: (+44) 1 844 202500
sales@apem.co.uk

DENMARK

MEC
Industriparken 23
2750 BALLERUP
Tel: (+45) 44 97 33 66
Fax: (+45) 44 68 15 14
danmec@mec.dk

ASIAPAC



CHINA

RongGuang Building, 602A
11, Changshun Road
200051 SHANGHAI
Tel: (+86) 21 6278 8546,
(+86) 21 6278 6872
Fax: (+86) 21 6208 8209
contact@apem.com.cn

MORE THAN 130 DISTRIBUTORS WORLDWIDE
(Complete list available on www.apem.com)