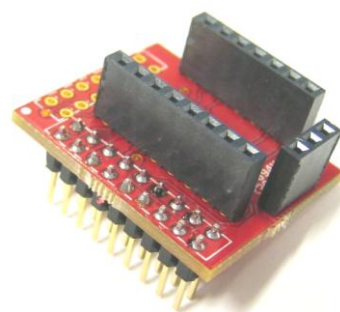


# Specification

## Adapter PCB for Murata Sensors and TI's Development Environment



## 1 Introduction

The adapter PCB enables fast prototyping with Murata's chip carrier PCBs and TI's development tools.

Supported Murata's products:

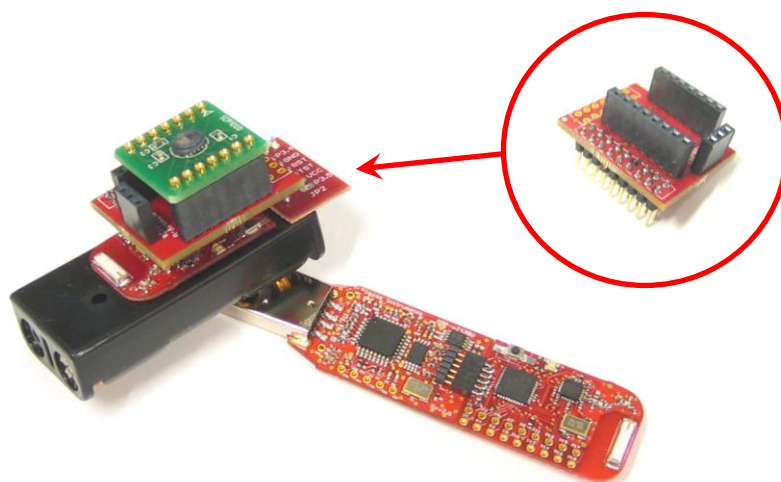
- CMA3000 series chip carrier PCBs

Supported TI's development tools are:

- eZ430-RF2500
- eZ430-F2013

The adapter PCB supports only SPI hardware.

## 2 Adapter PCB



**Figure 1. Adapter PCB used to stack the SCP1000 chip carrier to TI's eZ430-RF2500.**

The adapter PCB delivery package contains the following items (Table 1 below). All items are unsoldered.

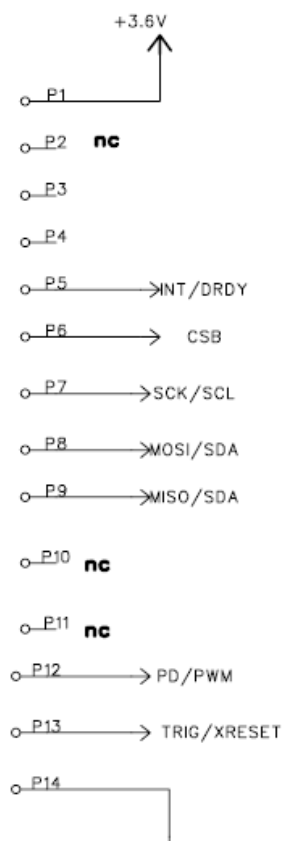
Table 1. BOM of the adapter PCB.

Item	Qty	Ref	Part Name / type	TI's dev. Tool
1	1	P1/P2	2x9-pin through hole pin header, pitch 100 mils	eZ430-RF2500/ eZ430-F2013
2	1	J1	8-pin through hole pin header, pitch 100 mils	
3	1	J2	7-pin through hole pin header, pitch 100 mils	
4	1	J3	3-pin through hole pin header, pitch 100 mils	

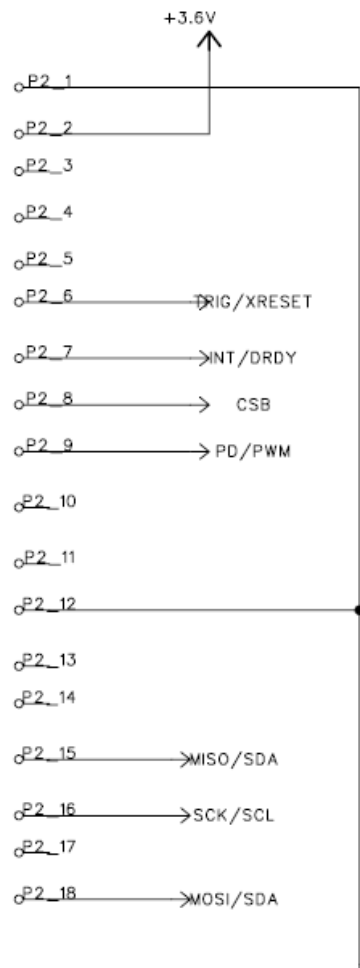
Detailed pictures of the adapter PCB are presented in following pages:

- Circuit diagram
- PWB layout
- Assembly drawings

### Connector for eZ430-F2013



### Connector for eZ430-F2500



### Connector Murata's chip carrier PCBs

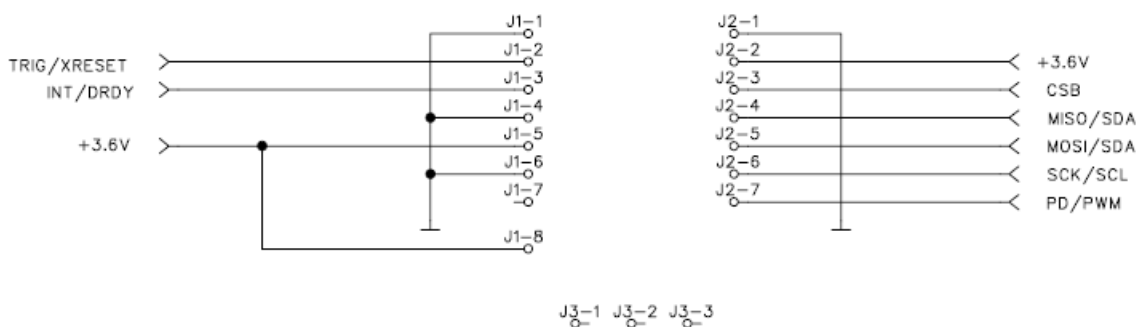


Figure 2. Adapter PCB circuit diagrams.

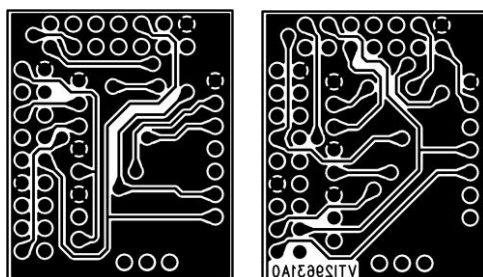


Figure 3. Adapter PCB layout.

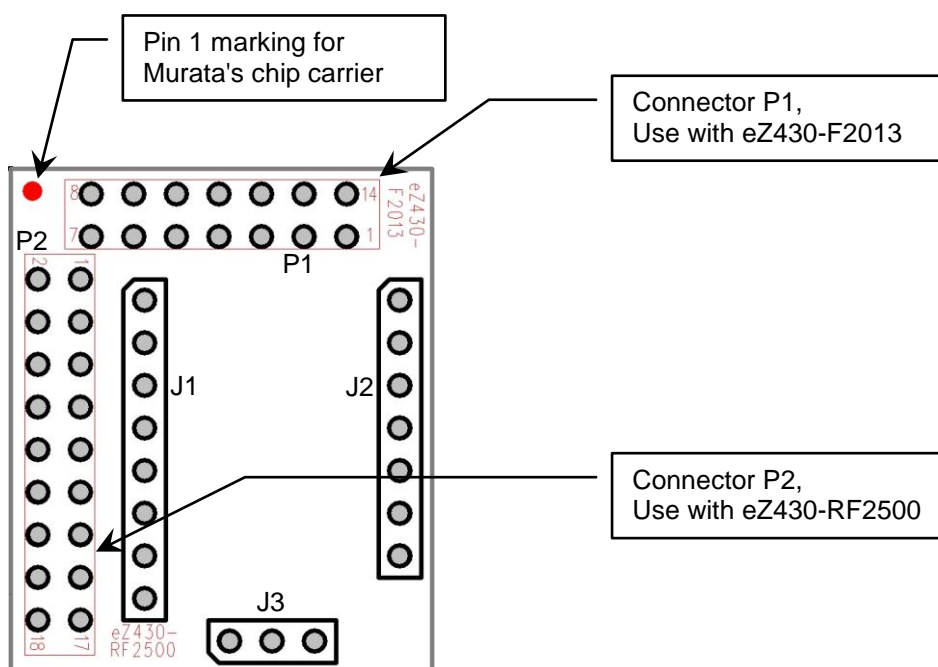


Figure 4. Connector placement on adapter PCB.