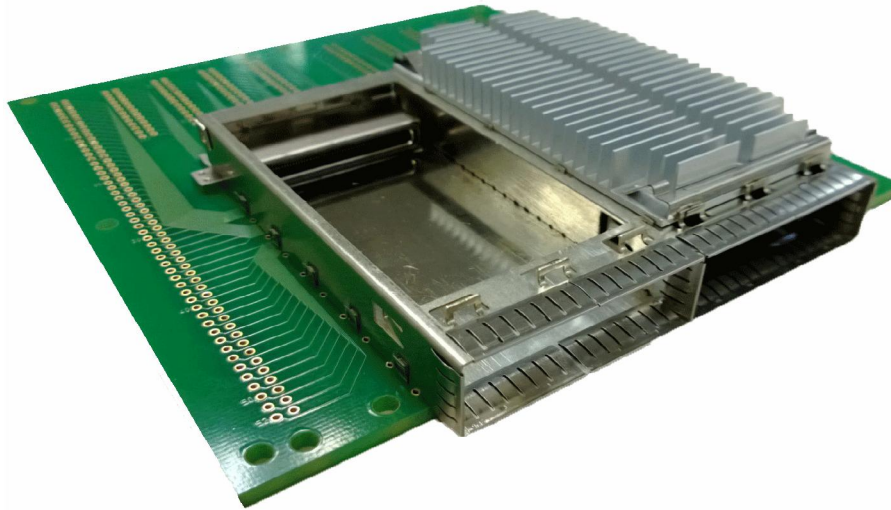


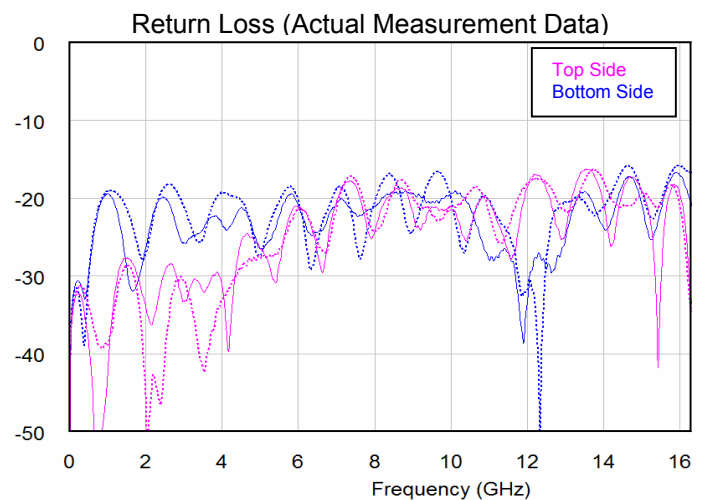
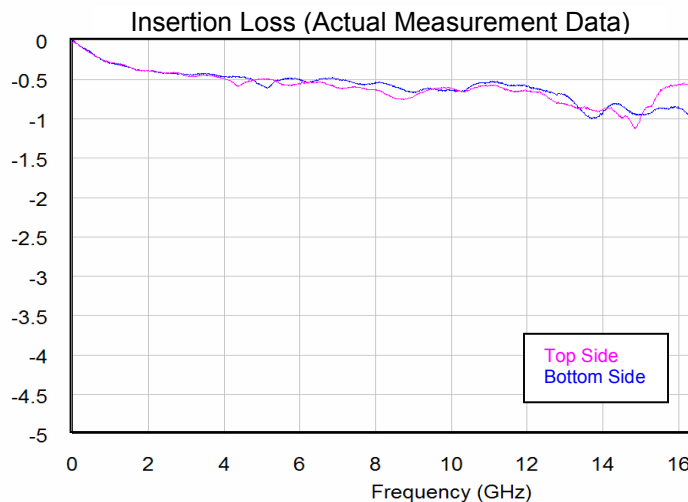


# CFP2/CFP4 Connectors

*Form Factors for 100GbE and Coherent Optics*



- *Compliant with CFP-MSA CFP2 & CFP4 Design Guidelines*
- *Transmission Speed: 32 Gbps and beyond*
- *CFP 2 Available Dual-slot / Single-slot mechanics*
- *CFP 4 Available Quad-slot / Single-slot mechanics*
- *Capable Belly to Belly Mount*
- *Available Front to Back / Side to Side / Custom Heat Sink Option*

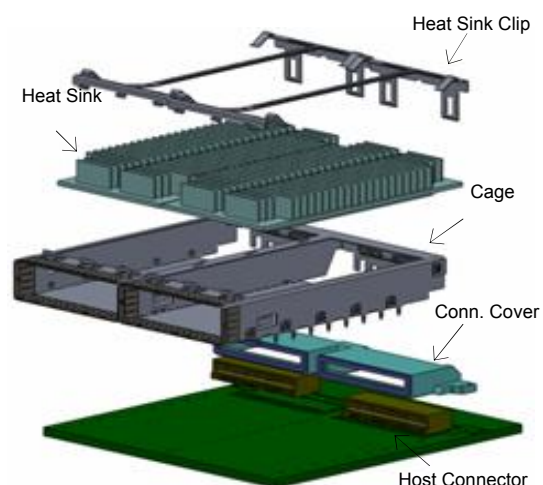


Yamaichi Electronics USA, Inc  
475 Holger Way, San Jose, CA 95134  
Phone: (408) 715-9100 Fax: (408) 715-9199  
Email: [info@yeu.com](mailto:info@yeu.com) Web: [www.yeu.com](http://www.yeu.com)

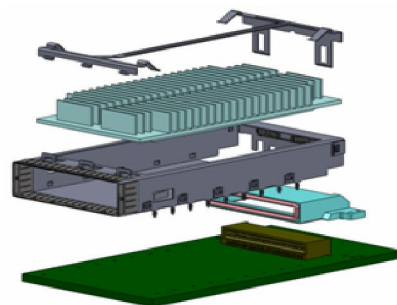


# CFP2 / CFP4 Connectors

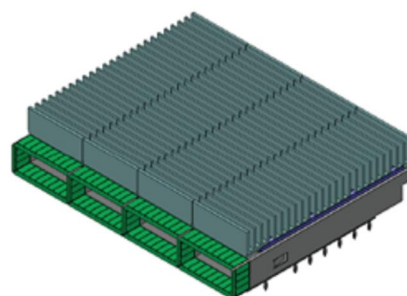
Part Number		Description
CFP2	CFP4	
CN121S-104-0001	CN121S-056-0001	Host Connector (Tray Package)
CN121S-104-0002	CN121S-056-0003	Host Connector (Tape & Reel)
CN121P-104-0003	CN121P-056-0004	Plug Connector (Mounted on Module)
CN121G-104-0001	CN121G-056-0001	Conn. Cover (CFP2 = Dual Ports) (CFP4 = Quad Ports)
CN121G-104-0002	CN121G-056-0002	Conn. Cover (Single Port)
CN121C-104-0001	CN121C-056-0001	Cage (CFP2 = Dual Ports) (CFP4 = Quad Ports)
CN121C-104-0002	CN121C-056-0002	Cage (Single Port)
CN121F-104-0001	CN121F-056-0001	Side-to-Side Fins Heat Sink
CN121F-104-0004-YEU	-	Side-to-Side Fins Heat Sink (Made with Copper)
CN121F-104-0003	CN121F-056-0002	Front-to-Back Fins Heat Sink
CN121F-104-YEU01	-	Side-to-Side Heat Sink, Low Profile (7.75mm)
CN121D-104-0002	-	Host Module Dust Cap
CN121M-104-0001	-	Heat Sink Clip
CN121A-104-0004	-	CFP2 Dual Slot Mechanical Kit (Contains Dual-Port Cage x 1, Dual-Port Cover x 1, Side-to-Side Heat Sink x 2, Heat Sinks clip x 2)
N/A	CN121A-056-0002	CFP4 Quad Slot Mechanical Kit (Contains Quad-Port Cage x 1, Quad-Port Cover x 1, Side-to-Side Heat Sink x 4)
CN121A-104-0003*	CN121A-056-0004	Single Slot Mechanical Kit (Contains Single-Port Cover x 1, Single-port Cage x 1, Side-to-Side Heat Sink x 1, *CFP2 with Heat Sinks clip x 1)



**Dual-Port CFP2 Components**



**Single-Port CFP2 Components**



**Quad-Port CFP4**

Yamaichi Electronics is a leading supplier of Test & Burn-in Sockets, connectors and interconnect systems where reliability and dependability are paramount to the overall project's success. We have rapidly achieved world class status as a manufacturer of high quality and reliable components for demanding applications in telecom infrastructure, automotive, industrial automation, cell phones, GPS systems, printers, digital cameras, camcorders and a host of other consumer, industrial and electronic devices.

**Yamaichi Electronics USA, Inc**  
 475 Holger Way, San Jose, CA 95134  
 TEL: (408) 715-9100 FAX: (408) 715-9199  
 Email: [info@yeu.com](mailto:info@yeu.com) Web: