

LANTRONIX®

DeviceLinX™


XPort Embedded Device Server

- ▶ Minimal engineering effort required to web-enable virtually any electronic device
- ▶ Remote command and control of edge devices
- ▶ Real-time edge device status via e-mail alerts
- ▶ 256-bit AES encryption for secure communications
- ▶ EMC/EMI-compliant; RoHS-compliant
- ▶ Everything you need – all in a single RJ45 package



Build Network Connectivity into Your Products, Quickly and Simply

XPort® is a compact, integrated solution to web-enable any device with serial capability. By incorporating XPort to a product design, manufacturers can offer network connectivity as a standard feature within weeks — so they can be accessed and controlled over the Internet.

Full Networking in a Tiny Package

XPort removes the complexity – of designing network connectivity into a product by incorporating all of the required hardware and software inside a single embedded solution. Smaller than your thumb, it includes all essential networking features, including a 10Base-T/100Base-TX Ethernet connection, proven operating system, an embedded web server, e-mail alerts, a full TCP/IP protocol stack, and 256-bit AES encryption for secure communications. This easy-to-embed networking processor module enables engineers to focus on their core competency while reducing development time and cost and increasing product value.

Integrated Network Communications Module

XPort is powered by our DSTni™ network processor SoC, which includes a 10/100 MAC/PHY and 256 KB of SRAM. It features a built-in web server for communications with a device via a standard Internet browser. Web capability can be used for remote configuration, real-time monitoring or troubleshooting. XPort has 512 KB of on-module Flash for web pages and software upgrades. It acts as a dedicated co-processor that optimizes network activities permitting the host microprocessor to function at maximum efficiency.

Building Intelligent Devices

With XPort you can embed intelligence into any electronic product for applications such as:

- Remote diagnostics and upgrades
- Asset tracking and replenishment
- Automation and control
- Power management
- Remote collaboration
- Personalized content delivery

Robust, Feature-Rich Software Suite

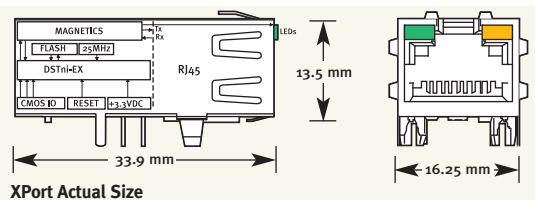
Eliminating the need to negotiate the intricacies of Transmission Control Protocol (TCP) or Internet Protocol (IP), XPort incorporates:

- Robust Real Time Operating System (RTOS)
- Full-featured network protocol stack
- Proven, ready-to-use serial-to-wireless application
- Built-in web server for device communication and configuration via a standard browser

The Windows-based DeviceInstaller™ makes configuring one or more XPorts in a subnet quick and easy.

- Install and configure XPort and load firmware
- Assign IP & other network specific addresses
- Set wireless parameters
- Load custom web pages and view specific device data
- Enable web-based configuration of the device
- Ping or query the attached device(s) over the network
- Allow Telnet communication with the device(s)





XPort Actual Size

Features and Specifications

Serial Interface

Interface: CMOS (Asynchronous, 5V tolerant)
 Data Rates: 300 bps to 921,600 bps
 Characters: 7 or 8 data bits
 Parity: odd, even, none
 Stop Bits: 1 or 2
 Control Signals: DTR/DCD, CTS, RTS
 Flow Control: XON/XOFF, RTS/CTS
 Programmable I/O: 3 PIO pins (software selectable)

Network Interface

Interface: Ethernet 10Base-T or 100Base-TX (Auto-Sensing)
 Connector: RJ45
 Protocols: TCP/IP, UDP/IP, ARP, ICMP, SNMP, TFTP, Telnet, DHCP, BOOTP, HTTP and AutoIP

Indicators (LED)

10Base-T connection
 100Base-TX connection
 Link & activity indicator - Full/half duplex

Management

SNMP, Telnet, serial, internal Web server, and Microsoft Windows®-based utility for configuration

Security

Password protection
 Optional 256-bit AES Rijndael encryption

Internal Web Server

Storage capacity: 384 KB for web pages

Architecture

CPU: Based on the DSTni-EX enhanced 16-bit, 48MHz or 88MHz x86 architecture
 Memory: 256 KB SRAM and 512 KB Flash
 Firmware: upgradeable via TFTP and serially

Power

Input voltage: 3.3 VDC

Environmental

Extended Temp: -40° to 85°C (-40° to 185°F)
 Storage: -40° to 85°C (-40° to 185°F)

Packaging

Dimensions: 33.9 x 16.25 x 13.5 mm (1.33 x .64 x .53 in)
 Weight: 9.6 g (0.34 oz)

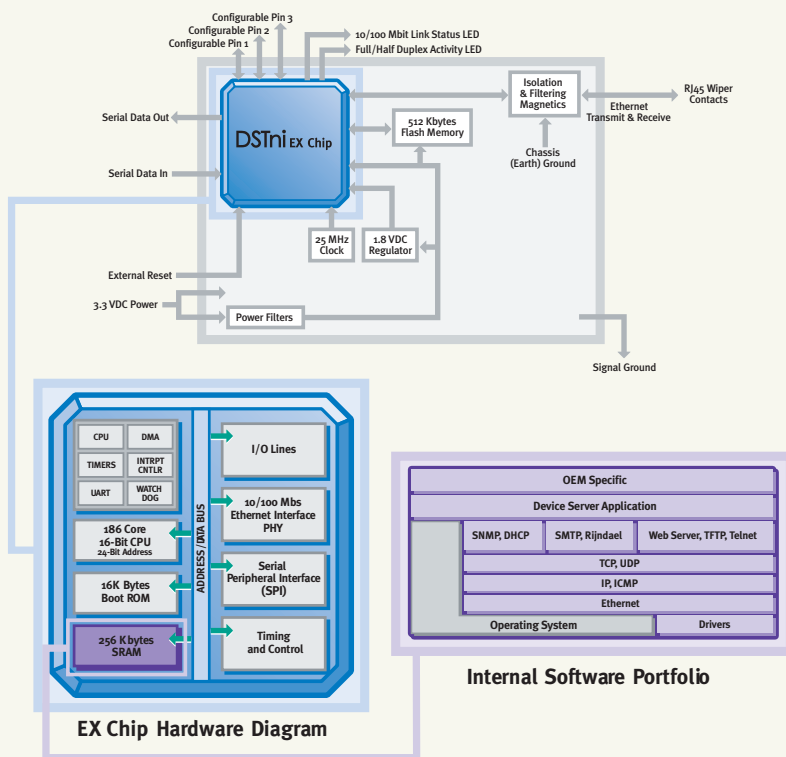
Warranty

2-year limited warranty

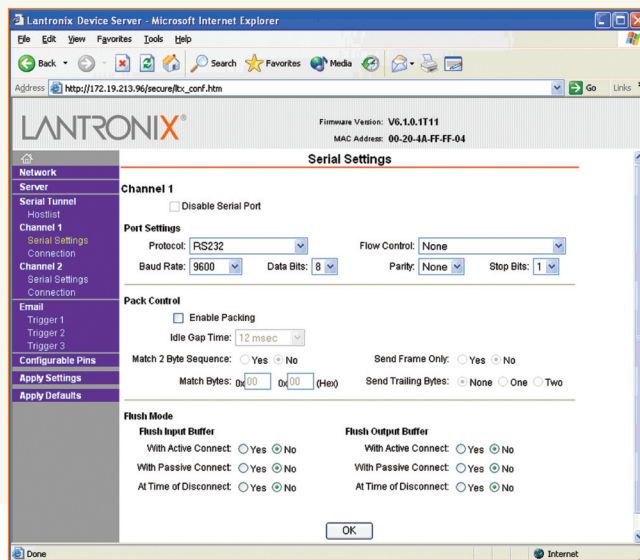
Included Software

MS Windows-based DeviceInstaller software and MS Windows-based Com Port Redirector

XPort Hardware and Software



The included DeviceInstaller software makes configuring XPort quick and easy!



XPort Evaluation Kit

The XPort Evaluation Kit includes everything you need to integrate the XPort into your next product design, including:

- An XPort Evaluation Board and reference design including CAD PCB files and complete BOM
- Universal AC power adapter
- Network (CAT5) and serial cable
- Connector adapter
- Data sheet
- Lantronix utilities CD containing new Com Port Redirector, DeviceInstaller
- Sample code and application notes
- Complete user manual

Lantronix Corporate Headquarters
 167 Technology Drive
 Irvine CA 92618
 t: 800.422.7055
 sales@lantronix.com

European Headquarters
 t: +31 (0) 76 52 36 74 4
 EMEA@lantronix.com

Asia/Pacific Headquarters
 t: +852 3428 2338
 asiapacific_sales@lantronix.com

Japan Headquarters
 t: +81.3.6277.8802
 japan_sales@lantronix.com