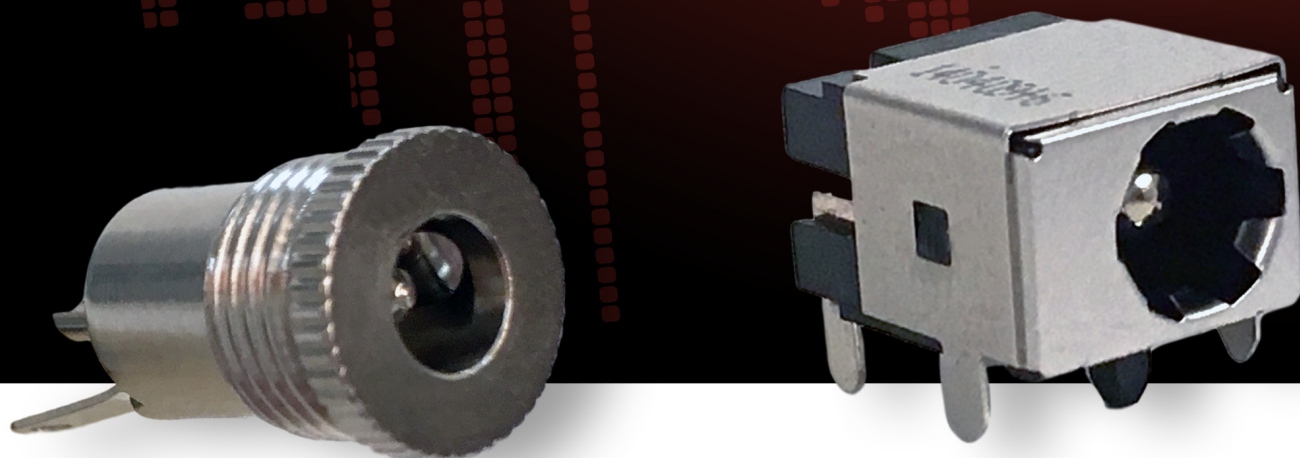




NEW PRODUCT BULLETIN 651

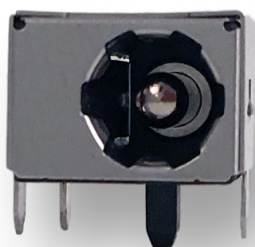
SHIELDED DC POWER JACKS



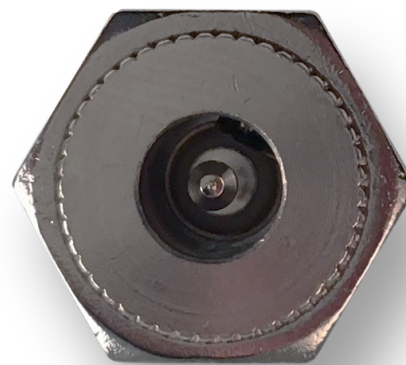
Switchcraft®
CONXALL®

HARSH ENVIRONMENT CONNECTIVITY SOLUTIONS

5555 N ELSTON AVE | CHICAGO, IL | 773.792.2700 | SALES@SWITCHCRAFT.COM | WWW.SWITCHCRAFT.COM



RAPC712S / RAPC722S



712AFMS / 721AFMS

NEW SERIES!

DC POWER JACKS WITH A BRASS SHELL FOR RF/EMI SHIELDING!

Switchcraft offers high quality DC power jacks and plugs with a huge range of options to fit any application. This new offering features a front-mount jack with a metal housing and a thru-hole PCB mount jack with a metal shield. Both are available with multiple center-pin sizes.

ELECTRICAL:

Voltage Rating:	48V AC/DC
Current Rating:	5A (current carry only)
Insulation Resistance:	1,000 MΩ min.
Dielectric Withstanding:	500 VAC max.

MECHANICAL/ ENVIRONMENTAL:

Life:	5,000 insertion/withdrawal cycles min
Temperature Limits:	-40°C to 65°C (-40°F to 149°F)
Max Panel Thickness:	0.100" [2.5mm] (712AFMS/722AFMS)

These Products are RoHS Compliant

MATERIAL - RAPC712S/ RAPC722S

Body:	Thermoplastic
Pin/ Terminal:	Brass, Nickel Plated
Shunt Terminal:	Brass, Silver Plated (Over Nickel)
Tip Spring:	Copper Alloy, Silver Plated (Over Nickel)
Ground Spring:	Stainless Steel
Shield:	Brass, Nickel Plated

MATERIAL - 712AFMS/ 721AFMS

Body:	Brass, Nickel Plated
Contacts:	Brass, Nickel Plated
Insulator:	Thermoplastic
Hex Nut:	Die Cast, Nickel Plated

PART NUMBER	PIN SIZE	SHUNT SWITCH	TERMINAL TYPE	COMPATIBLE MATING PLUGS
712AFMS	2.5mm	No	Solder	760, 765
721AFMS	2.1mm	No	Solder	762, 763
RAPC712S	2.5mm	Yes	Right Angle PC	760, 765
RAPC722S	2.0mm	Yes	Right Angle PC	S760, S765