



QPQ1907

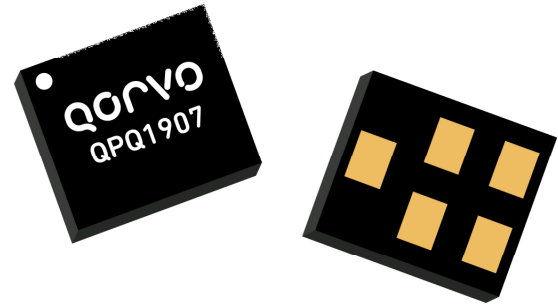
2.4GHz Wi-Fi/BT/LTE Co-Existence BAW Filter

Product Description

The QPQ1907 is a high-performance, high power Bulk Acoustic Wave (BAW) band-pass filter with extremely steep skirts, simultaneously exhibiting low loss in the Wi-Fi band and high near-in rejection in the 2.6GHz bands.

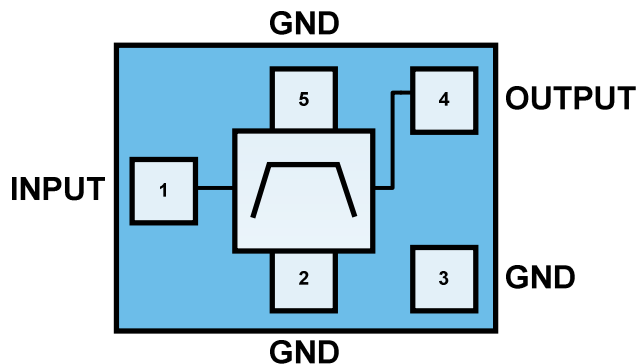
QPQ1907 is specifically designed to enable coexistence of Wi-Fi and LTE signals within the same device or in close proximity to one another.

The QPQ1907 uses common module packaging techniques to achieve the industry standard 1.4 x 1.2 x 0.915 mm footprint. The filter exhibits excellent power handling capabilities meeting FCC max limits of 1W average power.



1.4 x 1.2 x 0.915 mm 5-pin Laminate

Functional Block Diagram



Top View

Feature Overview

- Low loss in Wi-Fi band with extended upper corner for inclusion of Bluetooth
- High Rejection in LTE bands especially B7/B41
- Industry standard small size: 1.4 x 1.2 x 0.915 mm
- Extended Temperature performance over -20 to +95 °C
- Self matched to Single Ended 50Ohm operation
- RoHS Compliant, Pb-free module package
- High power handling to +30dBm averaged input power

Applications

- Wi-Fi bandpass filter that enables the coexistence of LTE & Wi-Fi/Bluetooth signals
- Consumer Premise Equipment (CPE)
- Small Cells
- Wi-Fi or LTE Gateways, Routers, and Set top boxes
- Smart Meters
- High-power WI-FI Access Points

Ordering Information

PART NUMBER	DESCRIPTION
QPQ1907SB	Sample bag with 5 pieces
QPQ1907SR	7" reel with 100 pieces
QPQ1907TR13-10	13" reel with 10,000 pieces
QPQ1907EVB	Assembled Evaluation Board

Absolute Maximum Ratings

PARAMETER	RANGE/VALUE	UNITS
Operating Case Temperature (no damage)	-40 to +105	°C
Storage Temperature	-40 to +100	°C
Power handling input power with Wi-Fi MCS7 OFDM signal, 10dB PAR, MTTF >1M hours, +95degC	+28	dBm

Operation of this device outside the parameter ranges given above may cause permanent damage.

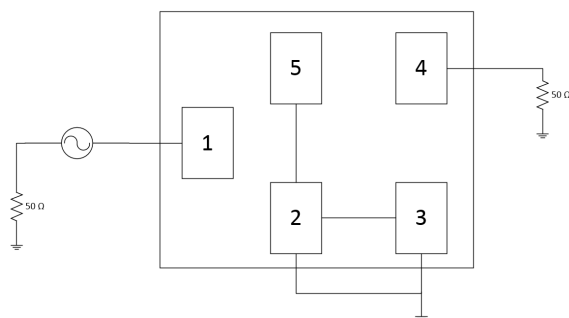
Electrical Specifications⁽¹⁾

PARAMETER	CONDITIONS TEMP = -20 TO 95°C UNLESS OTHERWISE NOTED	MIN	TYP. 35°C	MAX.	UNITS
Insertion Loss ⁽²⁾	2402.5-2421.5 MHz (ch1)	-	1.3	2.2	dB
	2407.5-2426.5 MHz (ch2)	-	1.1	1.6	
	2412.5-2471.5 MHz (ch 3-11)	-	1.0	1.3	
	2457.5-2476.5 MHz (ch 12)	-	1.1	1.5	
	2462.5-2481.5 MHz (ch13)	-	1.2	2.2	
Amplitude Ripple	2402.5-2421.5 MHz (ch1)	-	0.7	1.2	dB
	2407.5-2426.5 MHz (ch2)	-	0.4	0.6	
	2412.5-2471.5 MHz (ch 3-11)	-	0.5	0.6	
	2457.5-2476.5 MHz (ch 12)	-	0.6	0.7	
	2462.5-2481.5 MHz (ch13)	-	0.7	1.5	
VSWR (INPUT)	2402.5 – 2481.5 MHz	-	1.5:1	1.8:1	-
VSWR (OUTPUT)		-	1.5:1	1.8:1	
Attenuation	925 – 960 MHz	34	36	-	dB
	1559 – 1606 MHz	34	38	-	
	2110 – 2170 MHz	44	48	-	
	2300 – 2370 MHz ⁽³⁾	38	41	-	
	2500 – 2505 MHz (+25 to +95 °C) ⁽³⁾	30	36	-	
	2500 – 2505 MHz (-20 to +25 °C) ⁽³⁾	10	36	-	
	2505 – 2570 MHz (+25 to +95 °C) ⁽³⁾	43	61	-	
	2505 – 2570 MHz (-20 to +25 °C) ⁽³⁾	40	61	-	
	2570 – 2620 MHz ⁽³⁾	48	58	-	
	2620 – 2690 MHz ⁽³⁾	48	50	-	
	4800 – 5000 MHz	37	44	-	
	7200 – 7500 MHz	7	15	-	

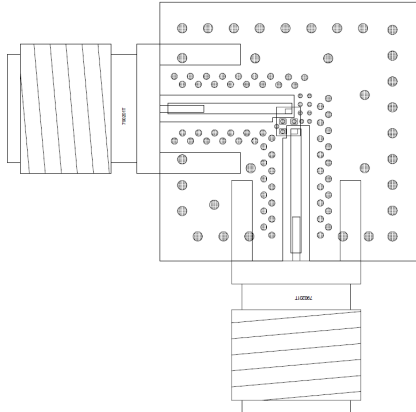
Notes:

1. All specifications are based on the QPQ1907 Applications Circuit
2. Data is the integrated value of the linear s-parameter over an 19 MHz channel
3. Data is the integrated value of the linear s-parameter over 5 MHz range at the specified temperature

QPQ1907 Applications Circuit



QPQ1907-EVB PCB Information

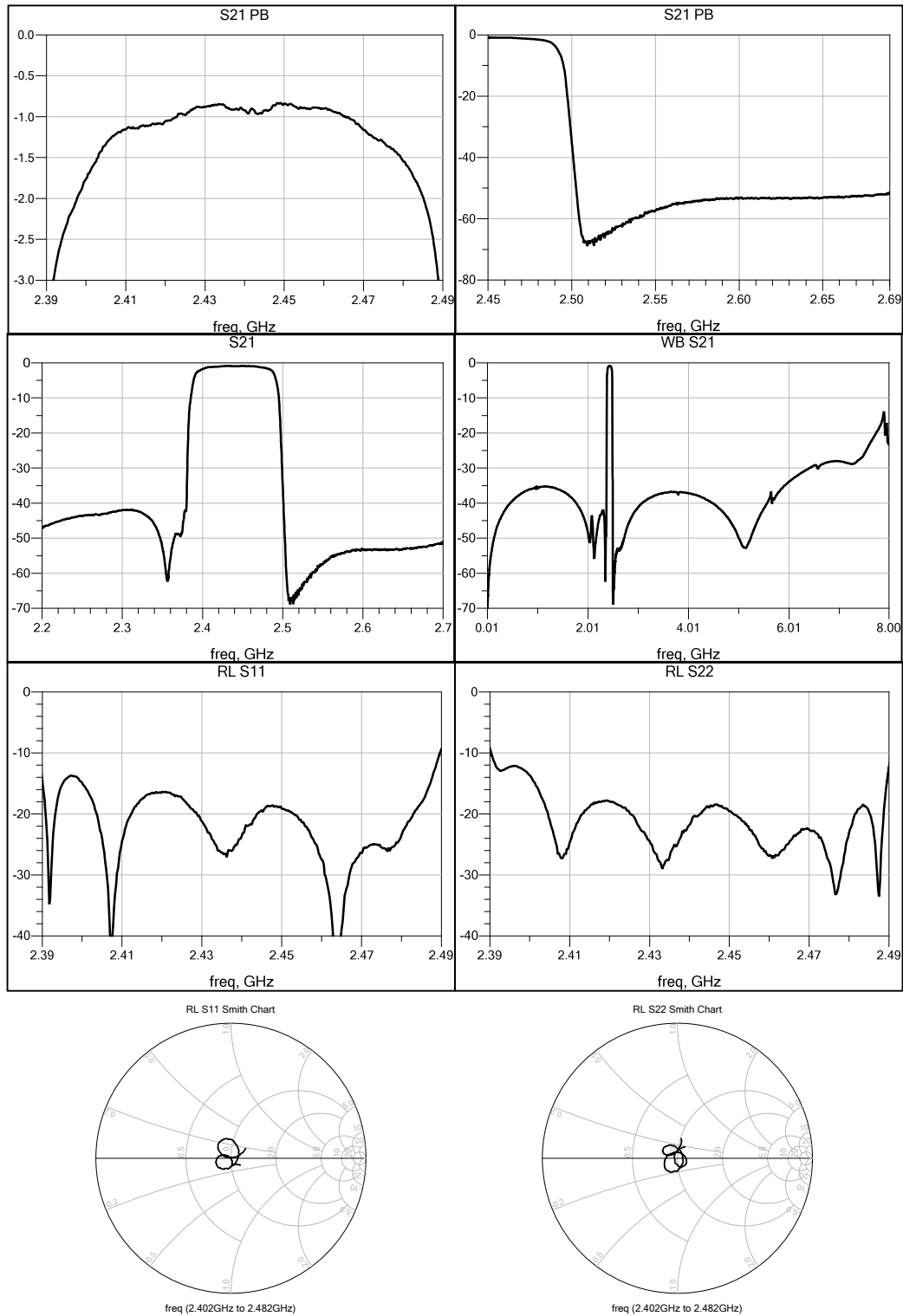
Evaluation Board Layer Description/Stackup		
Top:	1/2 oz. plated up to 1 mil holes	
Dielectric 1:	7.5 mils total dielectric thickness using Taconic TYL-5A	
Mid 1:	1/2 oz. Copper	
Dielectric 2:	x mils total dielectric thickness using FR4 material	
Bottom:	1/2 oz. copper plated up to 1 mil holes	
Overall Thickness:	62 mils	

QPQ1907-EVB Bill of Material

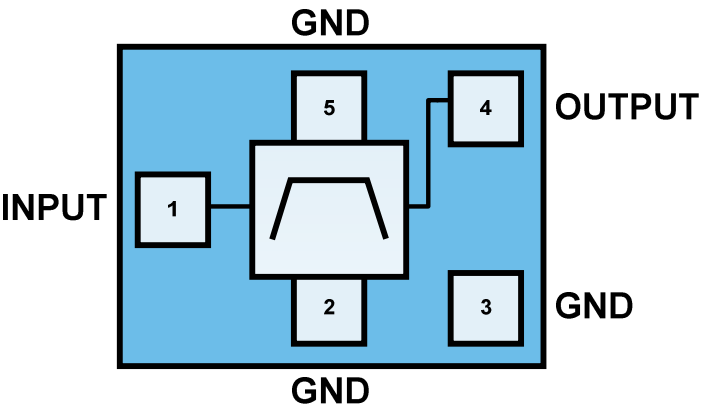
REF. DES.	VALUE	DESCRIPTION	MANUF.	PART NUMBER
PCB	N/A	3 Layer	Multiple	QPQ1907-EVB
U1	N/A	2.4GHz WI-FI/BT LTE Co-Existence Filter	Qorvo	QPQ1907

Performance Plots – QPQ1907-EVB

Test conditions unless otherwise noted: Temp. = +25 °C



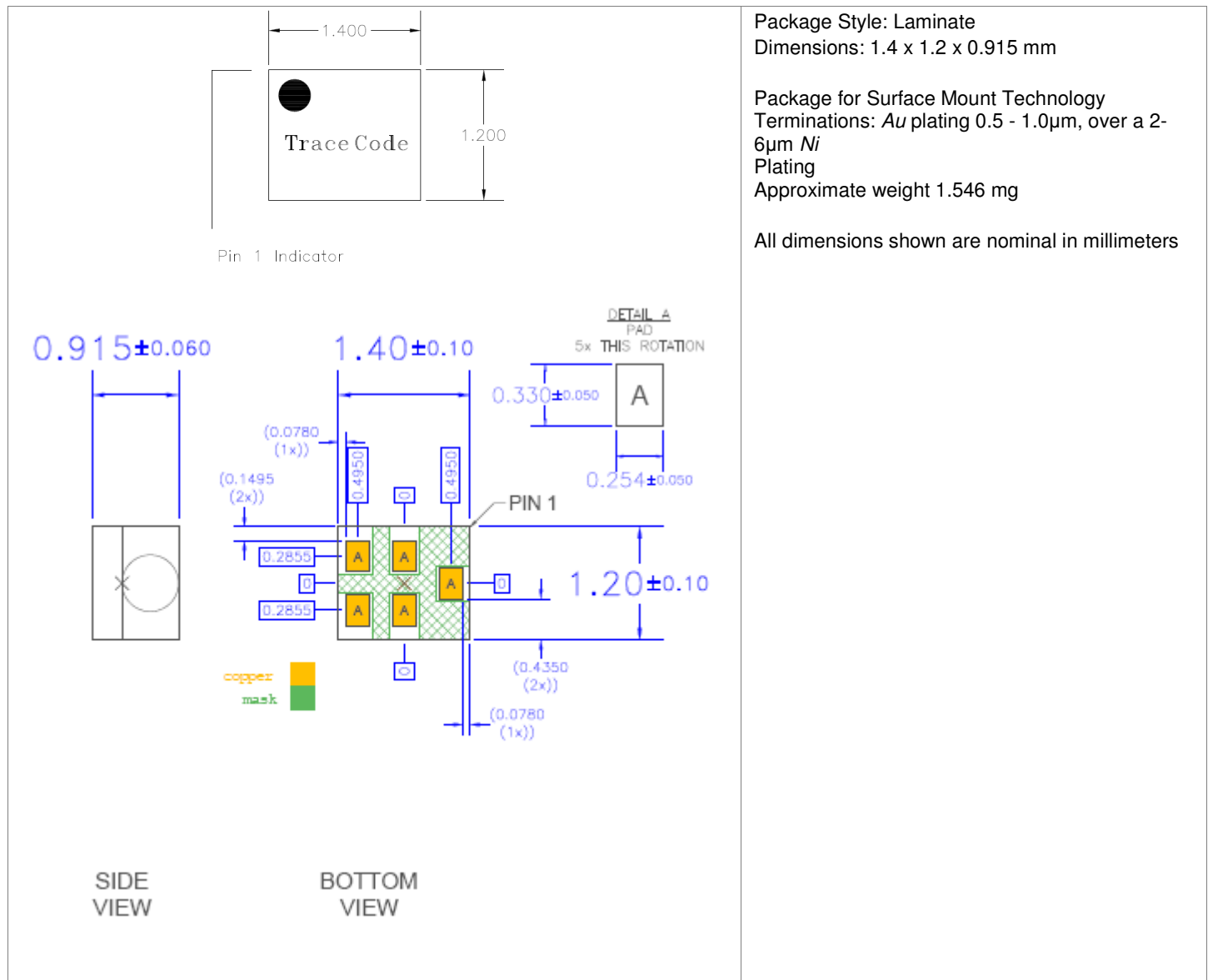
Pin Configuration and Description



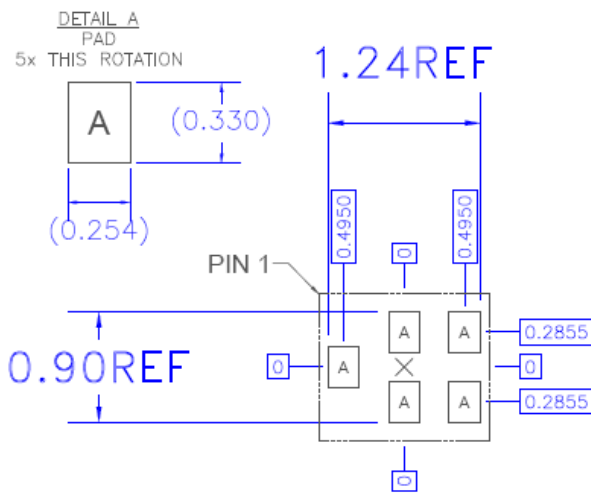
Top View

PIN NUMBER	LABEL	DESCRIPTION
1	TX	Transmit Port
4	ANT	Antenna Port
2, 3, and 5	GND	Ground

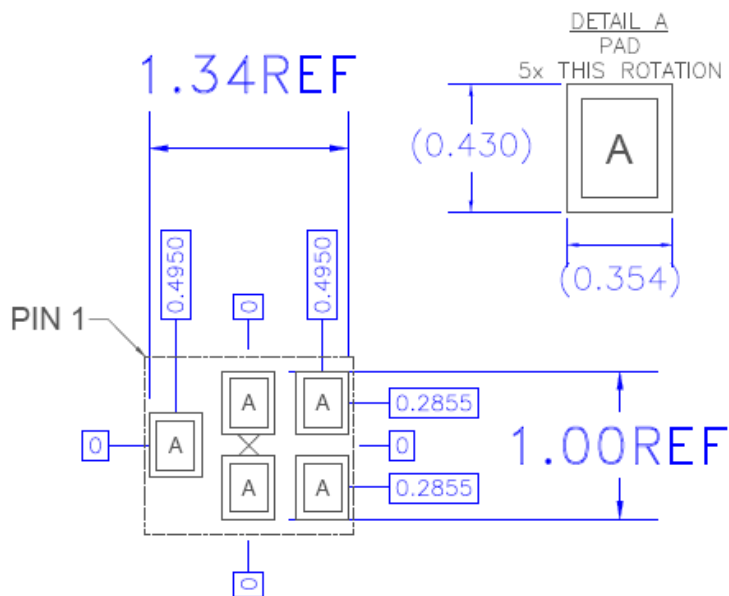
Package Marking and Dimensions



PCB Landing Pattern



Reocmmended Landing Pattern

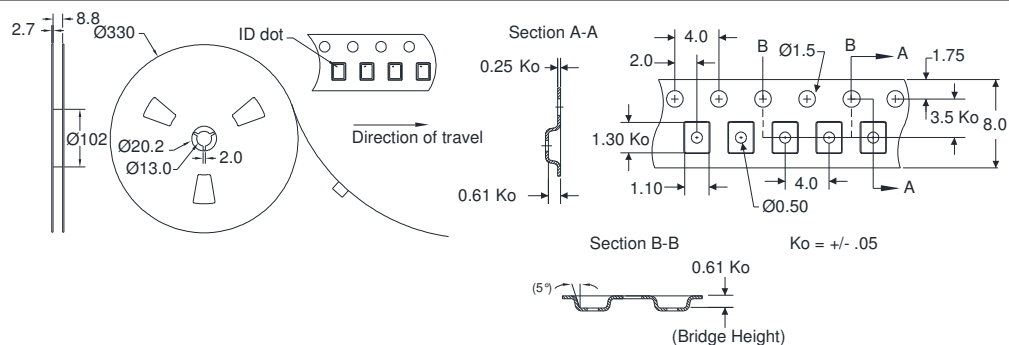


Reocmmended Landing Pattern Mask

Notes:

1. All dimensions are in millimeters. Angles are in degrees.
2. This drawing specifies the mounting pattern used on the Qorvo evaluation board for this product. Some modification may be necessary to suit end user assembly materials and processes.

Tape and Reel Information



Standard T/R size=10,000 units/reel. All dimensions are in millimeters.

Handling Precautions

PARAMETER	RATING	STANDARD
ESD – Human Body Model (HBM)	Class 1B	ESDA/JEDEC JS-001
ESD – Charged Device Model (CDM)	Class C3	ESDA/JEDEC JS-002
MSL – Moisture Sensitivity Level	Level 3	IPC/JEDEC J-STD-020



Caution!

ESD sensitive device

Solderability

Compatible with the latest version of J-STD-020, lead free solder, 260 °C

RoHS Compliance

This part is compliant with the 2011/65/EU RoHS directive (Restrictions on the Use of Certain Hazardous Substances in Electrical and Electronic Equipment), as amended by Directive 2015/863/EU.

- Lead-free
- Halogen Free (Chlorine, Bromine)
- Antimony Free
- TBBP-A (C₁₅H₁₂Br₄O₂) Free
- PFOS Free
- SVHC Free
- Qorvo Green



Contact Information

For the latest specifications, additional product information, worldwide sales and distribution locations:

Web: www.qorvo.com

Tel: 1-844-890-8163

Email: customer.support@qorvo.com

Important Notice

The information contained herein is believed to be reliable; however, Qorvo makes no warranties regarding the information contained herein and assumes no responsibility or liability whatsoever for the use of the information contained herein. All information contained herein is subject to change without notice. Customers should obtain and verify the latest relevant information before placing orders for Qorvo products. The information contained herein or any use of such information does not grant, explicitly or implicitly, to any party any patent rights, licenses, or any other intellectual property rights, whether with regard to such information itself or anything described by such information. **THIS INFORMATION DOES NOT CONSTITUTE A WARRANTY WITH RESPECT TO THE PRODUCTS DESCRIBED HEREIN, AND QORVO HEREBY DISCLAIMS ANY AND ALL WARRANTIES WITH RESPECT TO SUCH PRODUCTS WHETHER EXPRESS OR IMPLIED BY LAW, COURSE OF DEALING, COURSE OF PERFORMANCE, USAGE OF TRADE OR OTHERWISE, INCLUDING THE IMPLIED WARRANTIES OF MERCHANTABILITY AND FITNESS FOR A PARTICULAR PURPOSE.** Without limiting the generality of the foregoing, Qorvo products are not warranted or authorized for use as critical components in medical, life-saving, or life-sustaining applications, or other applications where a failure would reasonably be expected to cause severe personal injury or death.

Copyright 2016 © Qorvo, Inc. | Qorvo is a registered trademark of Qorvo, Inc.

Mouser Electronics

Authorized Distributor

Click to View Pricing, Inventory, Delivery & Lifecycle Information:

Qorvo:

[QPQ1907EVB01](#) [QPQ1907SR](#) [QPQ1907TR13-10K](#) [QPQ1907SB](#)