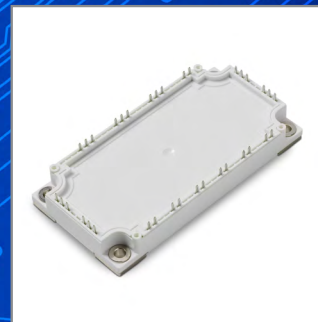


- IGBT MODULE  
UP TO 1700V AND  
600A
- RECTIFIER MODULE  
UP TO 1800V AND  
200A



## CUSTOMIZED TO MEET DEMANDING REQUIREMENTS

### IGBT and Rectifier Technology for Power Applications in the Industrial Electronics Segment:

- Industrial Drives and Motion Control
- Solar Inverter
- UPS
- Welder

Used for power control applications, Littelfuse offers an expanded portfolio of IGBT and Rectifier Diode modules for flexible and efficient motor control and inverter applications.

Littelfuse power semiconductor modules offer high efficiency and fast switching speeds of modern IGBT technology in a robust and flexible format. The Rectifier Diode Modules' high thermal efficiency offers long life and reliability to product performance.

Offered in popular circuit topologies and industry-standard packaging for a wide range of voltage and current ratings.

Don't take chances when it comes to your power control semiconductor needs, contact the experts at Littelfuse today! Visit [www.littelfuse.com](http://www.littelfuse.com) for more information.



Expertise Applied | Answers Delivered

Littelfuse devices included in the Power Semiconductor family

IGBT MODULE  
UP TO 1700V  
AND 600A

Package D

Package H

Package S

Package WB

Package W

RECTIFIER MODULE  
UP TO 1800V  
AND 200A

Package A

Package S

Littelfuse Power Semiconductor devices are available in following packages:

CIRCUIT TYPE	PACKAGE TYPE	CIRCUIT TYPE	PACKAGE TYPE	
IGBT MODULE		RECTIFIER MODULE		
<b>Half-Bridge</b> 	<b>Package D</b>  108x62x30.5mm	<b>Phase Leg</b> 	<b>Package A</b>  93x21x30.4mm	
	<b>Package S</b>  94x33.8x30.5mm		<b>Common Cathode</b> 	
	<b>Package WB</b>  152x62x17mm			
<b>3-Phase Inverter Module (6 Pack)</b> 	<b>Package H</b>  107.5x45x17mm	<b>Package S</b>  94x33.8x30.5mm		
	<b>Package W</b>  122x62x17mm			
<b>3-Phase Converter Brake Inverter Module</b> 				