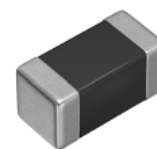


KLZ-HR Series

Multilayer Inductors for Decoupling Circuits with Soft Termination

TDK's KLZ-HR Series multilayer inductors were designed with innovative soft termination technology to offer high reliability under harsh conditions, even at high temperatures up to 150°C. The KLZ-HR series is qualified to AEC-Q200 and their compact size and robustness makes them ideal for use in demanding automotive applications such as engine control modules (ECUs), various in-vehicle electronic control units (ECUs), and advanced driver assistance systems (ADAS), as well as in a variety of industrial equipment. The external electrodes of the KLZ-HR series feature a conductive resin layer that offers effective protection against board flexure and solder cracks due to mechanical stress during mounting and thermal shock during operation.



Multilayer

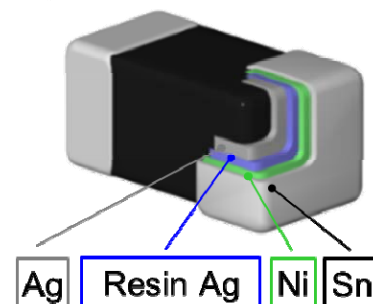
Soft Termination

AEC-Q200

Features

- Excellent DC superimposition characteristics and low DC resistance
- Compatible with wide frequency band noise, from low to high frequency
- Effective protection against board flexure and solder cracks
- Suitable for high operating temperatures up to 150°C
- Qualified to AEC-Q200

Soft Termination Electrode Design



Applications

- Engine control modules (ECMs) and various in-vehicle electronic control units (ECUs)
- Advanced driver assistance systems (ADAS)
- Smart phones, tablet terminals, notebook PCs, camera modules, DSCs, video games

Part Number Information

KLZ	1608		A	HR		1R0		W		T		D25
Series name	LxWxH dimensions (mm)		Product internal code	Specifications (Grade)		Inductance (μH)		Characteristic type		Packaging style		Internal code
	1608	1.6x0.8x0.8	A	HR	Soft termination	1R0	1	W	Large current type	T	Taping	D25
			M			100	10					

Series	Size [mm]	Thickness [mm]	Inductance [μH] ±20%	DC Resistance [Ω] ± 30%	Saturation Current [mA] Max.
KLZ1608-HR	1.6 x 0.8	0.8	1.0 to 22	0.15 to 2.4	55 to 190
KLZ2012-HR	2.0 x 1.25	0.85 1.25	1.0 to 100	0.10 to 3.7	30 to 700