

Step 1: Choose a Cable Side Hood

Such as...



Han® Rectangular Connector

- IP67 protection
- Multiple locking choices
- Multiple materials
- Multiple sizes

Han-Yellock®

- Internal locking mechanism
- IP67 protection
- Zinc die-cast material
- Adapter frame for Han-Modular® modules

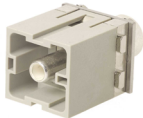
Han-Eco®

- IP65 protection
- 30% weigh reduction
- Economical solution
- Thermoplastic material
- Multiple sizes

...and many more.

Step 2: Choose from Over 40 Standard Inserts

Such as...



Pneumatic

- 2 - 3 contacts
- Contact sizes 1.6mm, 3mm, 4mm, and 6mm

Han® 200 amp

- 200 A current rating
- 1000 V voltage rating
- Axial screw and crimp termination available

RJ45

- Shielded module
- Connects 8 datalines
- Fulfills cat. 5e requirements

...and many more.

Step 3: Choose a Device Side Housing

Such as...



Han-INOX®

- Stainless steel
- IP 65 protection
- Protection against aggressive cleaning agents

Han® HPR

- Carbon resistant aluminum die cast material
- IP 68 protection
- Screw locking element
- Ideal for rail applications

...and many more.