

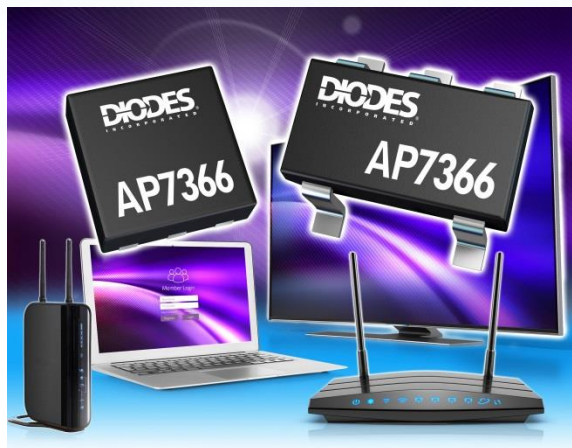
## Low Quiescent Current Fast Transient Low Dropout Linear Regulator

The AP7366 is a 600mA, adjustable and fixed output voltage, low dropout linear regulator. This device includes pass element, error amplifier, band-gap, current limit and thermal shutdown circuitry. The device is turned on when EN pin is set to logic high level.

The characteristics of low dropout voltage and low quiescent current make it suitable for low power applications such as battery powered devices. The typical quiescent current is approximately 35µA. Built-in current-limit and thermal-shutdown functions prevent IC from damage in fault conditions.

This device is available with adjustable output from 0.8V to 5.0V, and fixed version with 1.0V, 1.2V, 1.5V, 1.8V, 2.0V, 2.5V, 2.8V, 3.0V, 3.3V and 3.9V outputs. Please contact your local sales office for other voltage options.

The AP7366 is available in SOT25 and U-DFN2020-6 packages.



### The Diodes Advantage

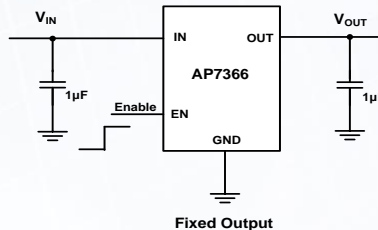
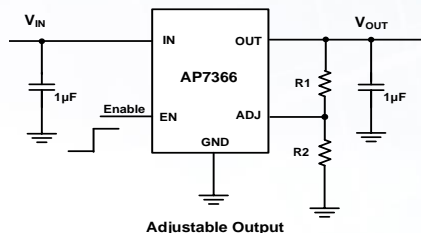
**The AP7366 maximizes system run times with its extremely low quiescent current.**

- **Wide Input Voltage: 2.6V to 6V**  
Offers operation down to 1.7V supporting operation over the whole range of 2 AA/AAA cells
- **Wide Output Voltage: ADJ 0.8V to 5.0V; Fixed 1.2V, 1.5V, 1.8V, 2.0V, 2.5V, 2.8V, 3.0V, 3.3V, 3.9V**  
Covers standard I/O voltage levels
- **Low Quiescent Current at 60µA**  
Minimizes standby power in low-power systems
- **Your Product Can Now Be Smaller, Lighter and Thinner**  
Matches industry standard footprints  
Enable function on one extends battery life even further
- **1.0% Output Accuracy at Room Temperature**  
Maintains accuracy under all conditions
- **Built-In Overtemperature Protection (OTP) Function**  
Protects system from overtemperature conditions

### Applications

- Server and notebook computers
- Low and medium power applications
- Tablets
- FPGA and DSP Core or I/O Power

### Typical Application Circuit



### Product Portfolio

| Part Number   | V <sub>IN</sub> (V) | V <sub>OUT</sub> (V) | I <sub>OUT</sub> (mA) | V <sub>DROP</sub> @ Full Load (mV) | I <sub>Q</sub> (µA) | Output Accuracy (%) | Enable | Package     |
|---------------|---------------------|----------------------|-----------------------|------------------------------------|---------------------|---------------------|--------|-------------|
| AP7366-XXW5-7 | 2.2 to 6.0          | 1.0                  | 600                   | 250                                | 60                  | 1                   | Yes    | SOT25       |
|               |                     | 1.2                  |                       |                                    |                     |                     |        |             |
|               |                     | 1.5                  |                       |                                    |                     |                     |        |             |
|               |                     | 1.8                  |                       |                                    |                     |                     |        |             |
|               |                     | 2.0                  |                       |                                    |                     |                     |        |             |
|               |                     | 2.5                  |                       |                                    |                     |                     |        | U-DFN2020-6 |
|               |                     | 2.8                  |                       |                                    |                     |                     |        |             |
|               |                     | 3.0                  |                       |                                    |                     |                     |        |             |
|               |                     | 3.3                  |                       |                                    |                     |                     |        |             |
|               |                     | 3.9                  |                       |                                    |                     |                     |        |             |
| AP7366-XXSN-7 |                     | ADJ (0.8 to 5.0)     |                       |                                    |                     |                     |        |             |

To find out more information: <https://www.diodes.com/part/AP7366>

### Ordering Information

AP7366 - XX XX - X

