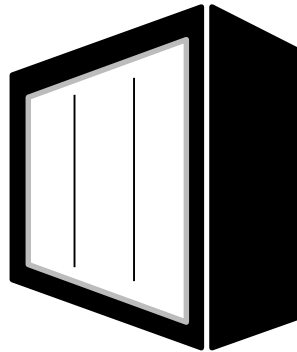


JAE DW Series

Energy Storage Battery Connector

Application Examples

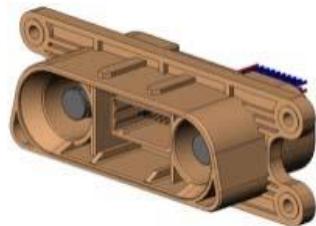
- UPS Equipment
- Energy Storage Systems
- Power Generation Systems



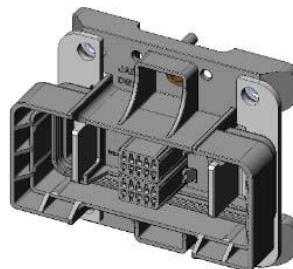
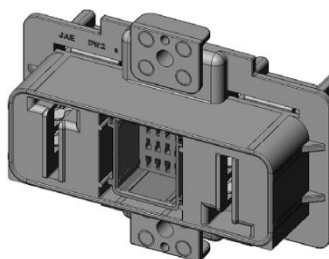
DW Series Overview

The DW Series are an array of high power connectors that make connecting energy storage batteries easier and more efficient. They range from large-scale energy storage to mid-range energy storage battery connectors. It is ideal for these connectors to be used in plant buildings, industrial locations and offices.

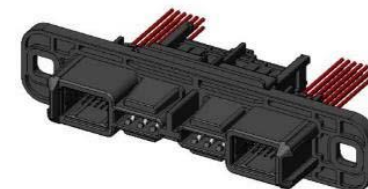
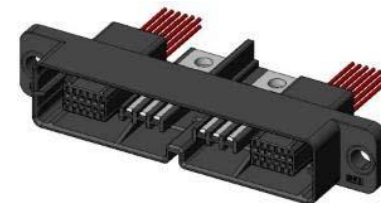
DW1



DW2



DW3



DW Series Features

Features

- Power and signal contacts in one robust insulator
- Easy to harness signal contact unit
- High-reliability 2 points of contact (similar to automotive contacts)
- One side floats when mounted for easy mating
- Electric shock prevention (DW1 plug, DW2 rec, DW3 plug and rec)
- Bus-bar or ring terminal harnessed cable to connect battery modules
- Mold and rubber flame retardant 94-V0

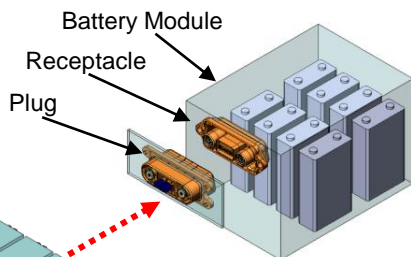


DW Series Features

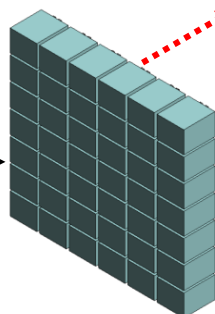
Application Examples



Large-scale Power Storage



Connected by bus-bar or cable



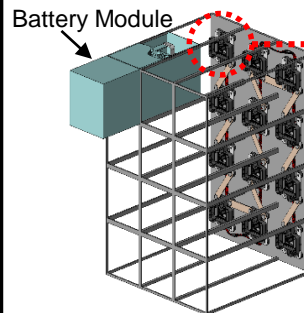
Battery Module mounting image

Rack and Panel

DW1

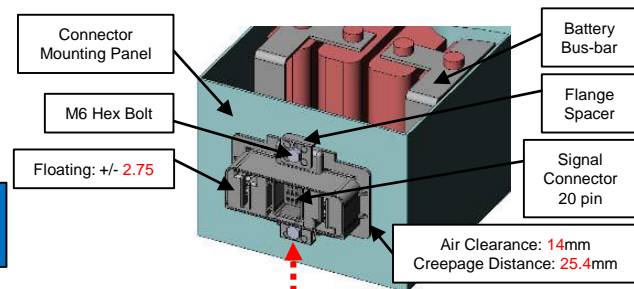


Mid-range Power Storage

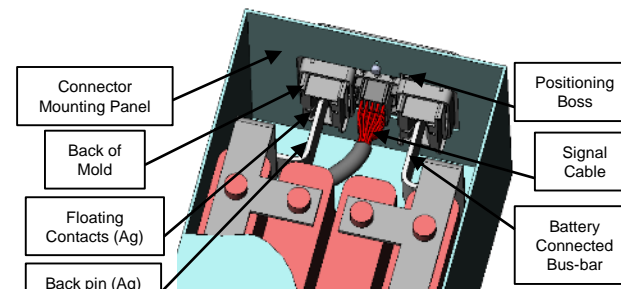


Rack and Panel

DW2



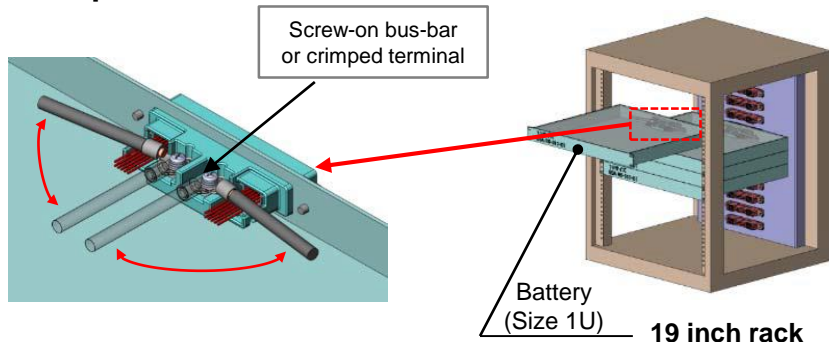
Battery Module Exterior



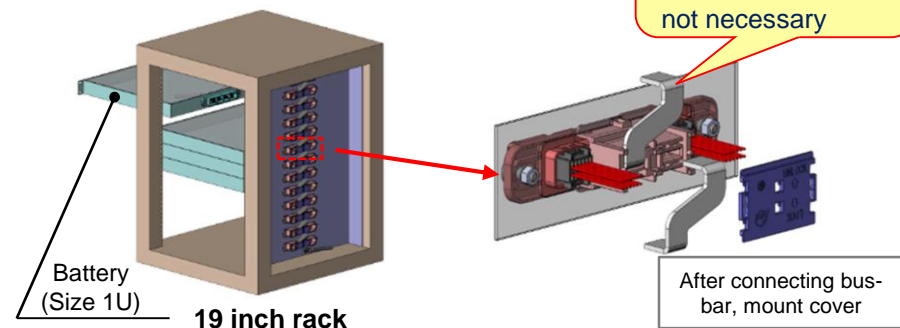
Battery Module Interior

DW3

Receptacle



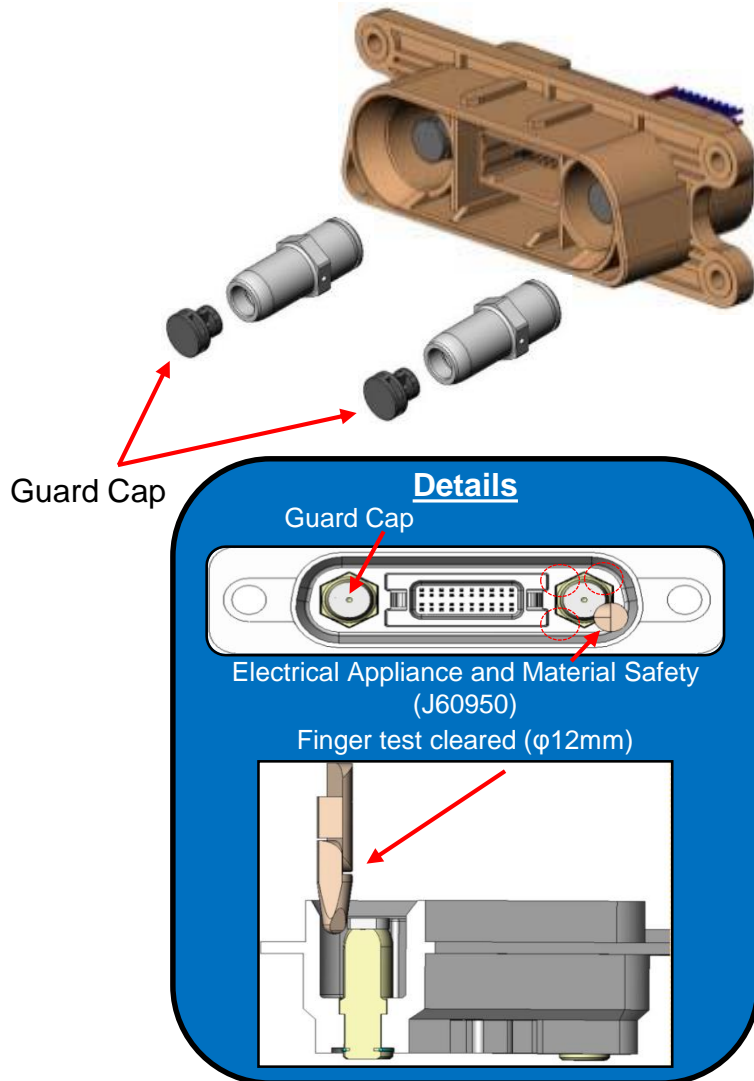
Plug



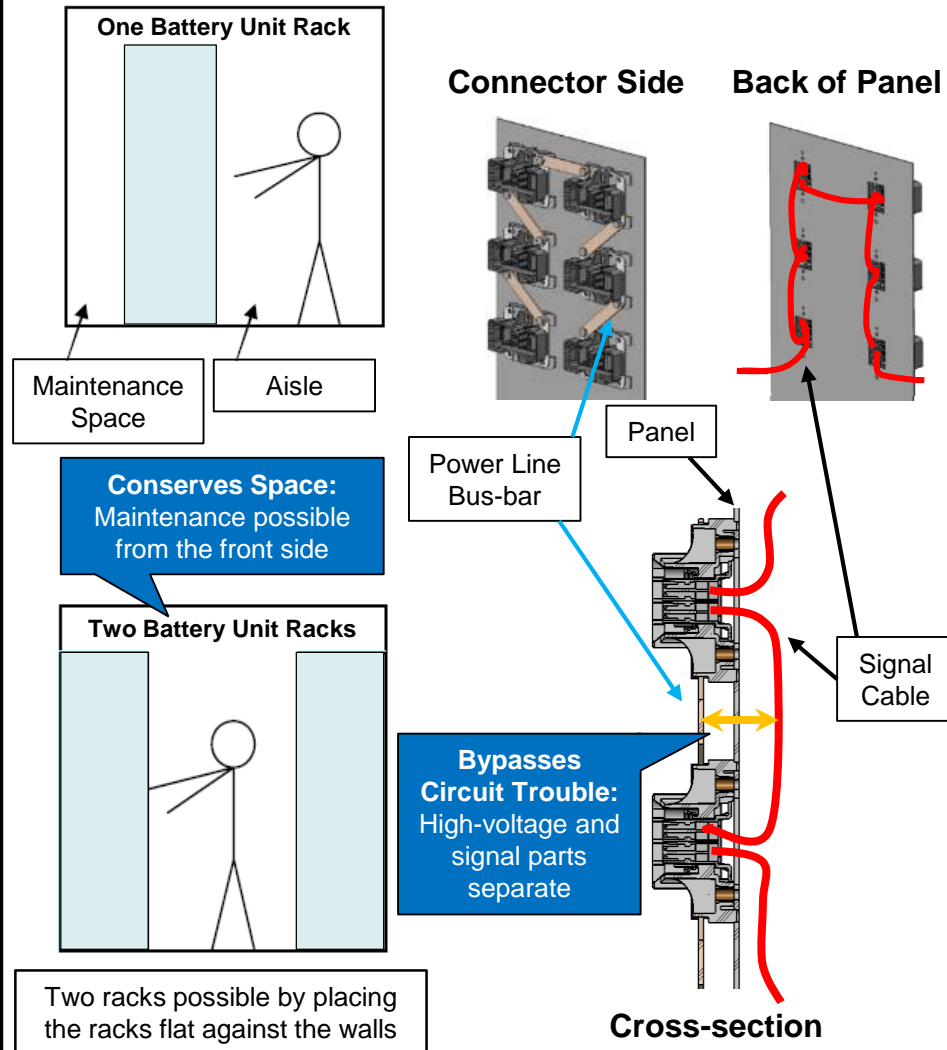
Workability made easy by direct connect to bus-bar (plug)

DW Series Features

DW1: Electric Shock Prevention



DW2: Mounting Features



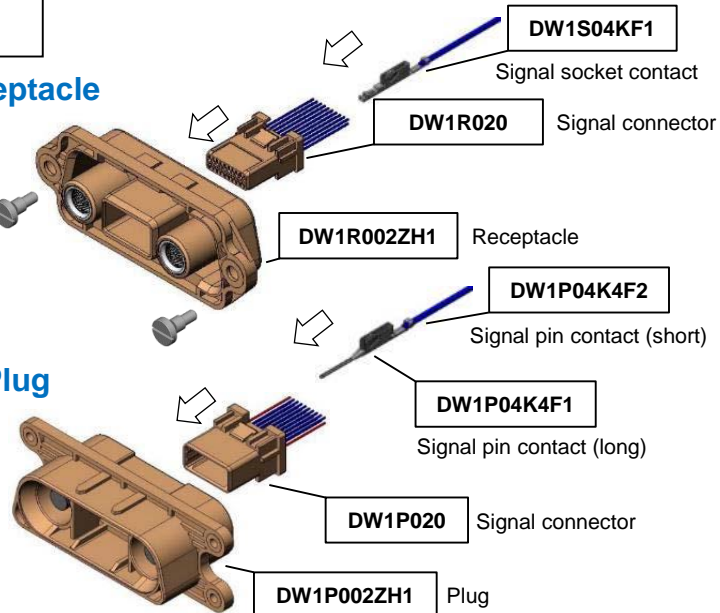
DW Series Connector Parts

DW1

Receptacle

D250-50632
Shoulder bolt

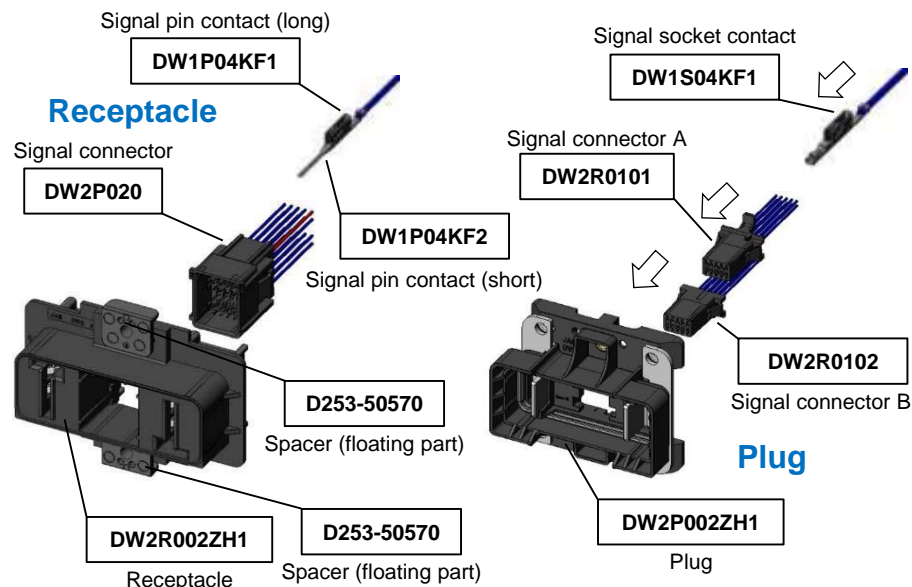
Plug



DW2

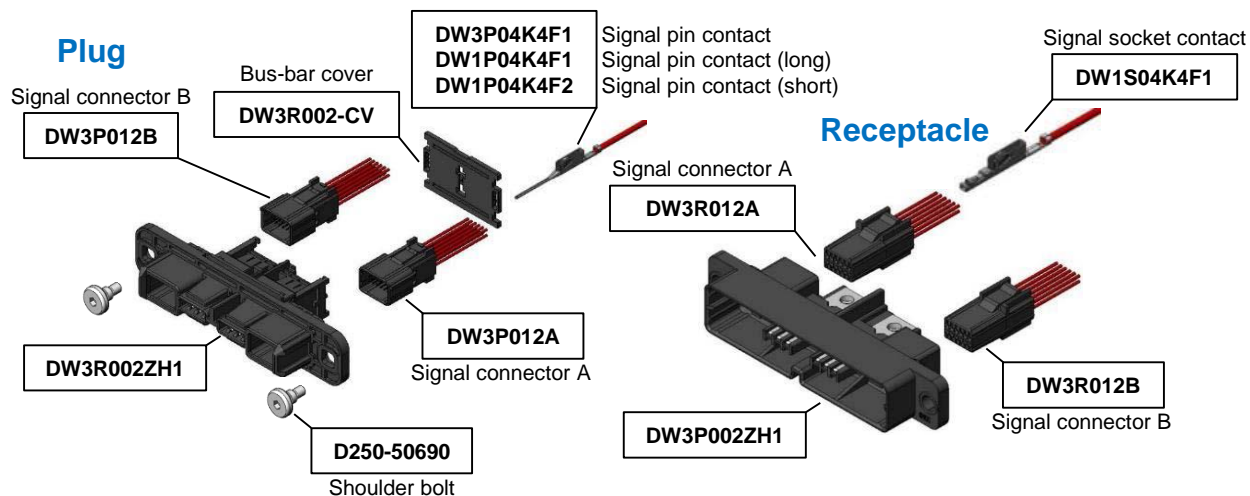
Note - Contacts are packaged in reels

Receptacle



DW3

Plug



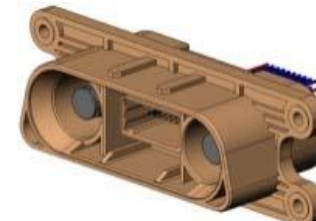
General Specifications

Item		DW1	DW2
Power pins		2	2
Signal pins		20	20
Rated Current	Power	500 A	200 A
	Signal	2 A	2 A
Rated Voltage	Power	600 V	1000 V
	Signal	100 V	100 V
Overvoltage category		4	4
Pollution grade		3	3
Temperature increase at power portion		45°C	45°C
Ambient temperature		-25 to +60°C	-25 to +60°C
Allowable temp at power portion		105°C	105°C

DW1

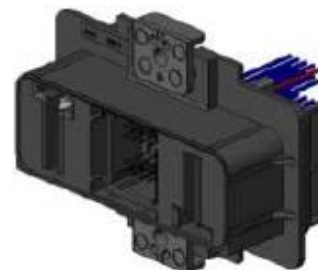


Receptacle



Plug

DW2



**Movable side
(battery side)**



**Fixed side
(panel side)**

General Specifications

Item	Power	Signal
Pin Count	2 pins	24 pins
Rated Current	150 A	2 A
Rated Voltage	1,000 V	100 V
Contact Resistance	Initial: Max. 0.2	Initial: Max. 20 After evaluation: Max. 30
Cable	Bus Bar: Width 15 +/- 1mm Thickness 3 +/- 0.1mm	AWG22 (0.3mm ²) Outer diameter of coated cable: 1.5mm
Durability	100 times	
Overvoltage Category	4	
Pollution Grade	3	
Ambient Temperature	-25 to +60°C	
Temperature increase at power contact	Max. 45°C	
Allowable temp at power portion	Max. 105°C	

DW3



Receptacle

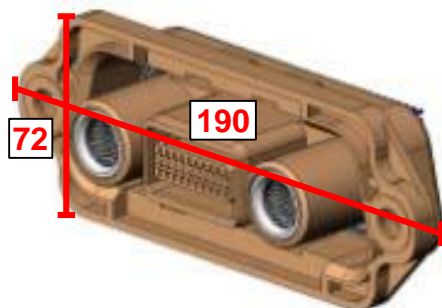


Plug

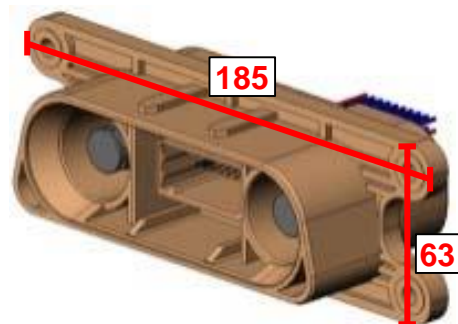
Mounting Dimensions

Unit: mm

DW1

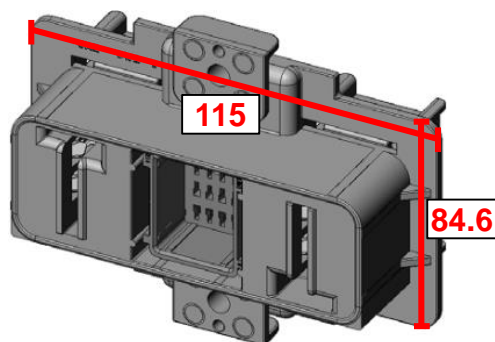


Receptacle

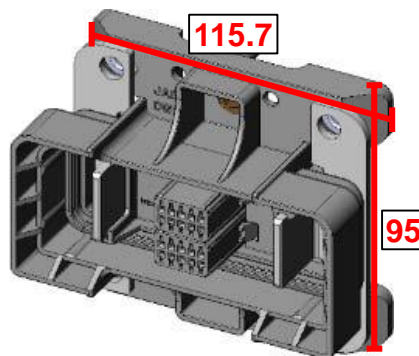


Plug

DW2

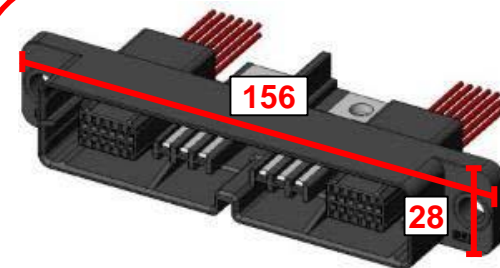


Receptacle

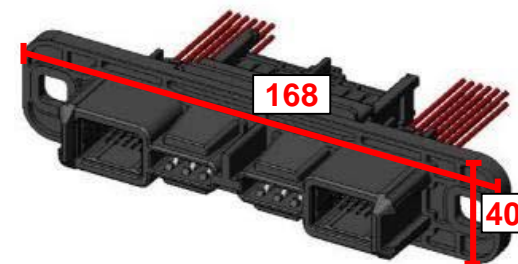


Plug

DW3



Receptacle




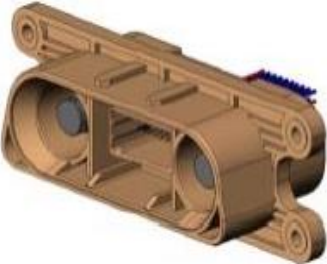
Plug

*Ideal for 1U Racks

Materials and Finishes


DW1

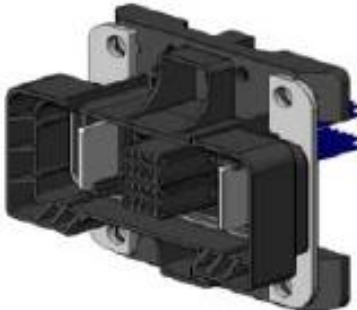
Receptacle	Description	Material/Finish
 <p>DW1R002ZH1</p>	Receptacle Housing	Polyphenylene Sulfide / Color: Brown (UL94V-0)
	Socket Contact	Copper Alloy / Ag plating
	C Snap Ring	Stainless steel / None
	Spring Contact	Copper Alloy / Ag plating
	Seal Ring	Silicon Rubber / Color: Gray (UL94V-0)

Plug	Description	Material/Finish
 <p>DW1P002ZH1</p>	Plug Housing	Polyphenylene Sulfide / Color: Brown (UL94V-0)
	Pin Contact	Copper Alloy / Ag plating
	C Snap Ring	Stainless steel / None
	Cover Cap	Polyphenylene Sulfide / Color: Black (UL94V-0)

Materials and Finishes

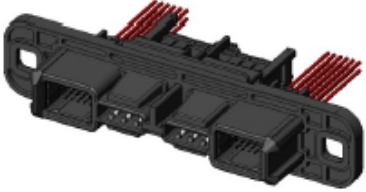
DW2

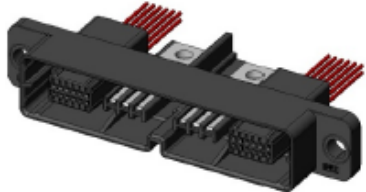
Receptacle	Description	Material/Finish
 <p>DW2R002ZH1</p>	Outer Housing	Polyphenylene Sulfide / Color: Black
	Floating Contact	Copper Alloy / Ag plating
	Helical Extension Spring	Stainless steel / None
	Rear Housing	Polybutylene Terephthalate / Color: Black

Plug	Description	Material/Finish
 <p>DW2P002ZH1</p>	Outer Housing	Polyphenylene Sulfide / Color: Black
	M8 Hexagon Nut	Brass / Ni plating
	Pin Contact	Copper Alloy / Ag plating
	Spring Pin	Stainless steel / None
	Sleeve	Brass / None
	Gasket	Silicon Rubber / Color: Grey

Materials and Finishes

DW3

Receptacle	Description	Material/Finish
 <p>DW3R002ZH1</p>	Base Housing	Polybutylene Terephthalate / Color: Black
	Floating Housing	Polybutylene Terephthalate / Color: Black
	Floating Contact	Copper Alloy / Ag plating
	Helical Extension Spring	Stainless steel / None
	Spring Pin	Stainless steel / None

Plug	Description	Material/Finish
 <p>DW3P002ZH1</p>	Base Housing	Polybutylene Terephthalate / Color: Black
	Pin Contact	Copper Alloy / Ag plating
	Hexagon Nut M6	Brass / Ni plating
	Spring Pin	Stainless steel / None

Summary

- High power connectors that make connecting energy storage batteries easier and more efficient.
- Range from large-scale to mid-range energy storage battery connectors
- Power and signal contacts in one robust insulator
- Easy to harness signal contact unit
- High-reliability 2 points of contact (similar to automotive connectors)
- One side floats when mounted for easy mating
- Electric shock prevention (DW1 plug, DW2 rec, DW3 plug and rec)
- Bus-bar or ring terminal harnessed cable to connect battery modules