

# MPO Stackable Adapters

## Creative Solutions for the MPO High Density

Amphenol's MPO stackable adapter system is a innovative way to **aggregate a high number of MPO connections** into a small footprint. The stackable adapters are modular and allow network and equipment designers to improve fiber density for applications that require high density. The stackable adapters have a track system for alignment and a permanent locking feature that prevents the adapters for ever coming loose.

Amphenol's stackable adapter system are for use with all **IEC 61754-7** and **EIA/TIA 604-5** compliant industry standard MPO connector systems including the MTP® branded connectors. The 45° angled ear end adapters enable directional cable routing of the MPO assemblies.

Amphenol Fiber Optic Products will preassembly the stackable adapters into your custom configuration saving you time and ensuring the highest quality.

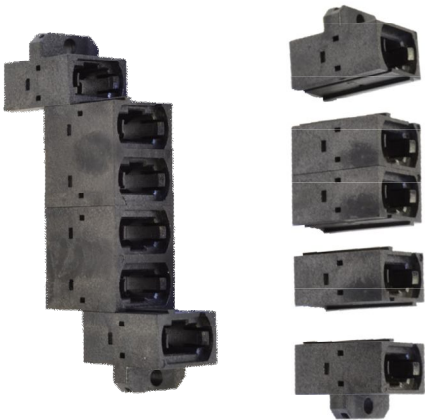
Amphenol is the world's leading interconnectivity provider. Founded in 1932, Amphenol designs, manufactures, and markets fiber optic, electrical, and coaxial interconnect products. Amphenol products are engineered and manufactured in the Americas, Europe, Asia, and Africa and offered through a worldwide sales and marketing organization.

### Experience

As a manufacturer with over 80 years of interconnect design and development, Amphenol leads innovation in connector technology. Utilizing this experience, Amphenol is able to develop a cost effective end-to-end solution to satisfy a customer's full connectivity and cabling needs.

### Reliability

Amphenol has a long history of total quality performance. Our high quality products, helpful customer service, and dependable product support from design through production result in satisfied customers.



Straight End Ear Adapters



Angled Ear End Adapters

## Product Features and Benefits:

| Feature                      | Description  |
|------------------------------|--|
| Simplex Center Adapter       | Use for odd numbered MPO ganged clusters                         |
| Duplex Center Adapter        | Use for even numbered MPO ganged clusters                        |
| Straight Ear End Adapter     | Use for mounting with center adapters for straight cable routing |
| Outer 45° Angled Ear Adapter | Use for mounting with center adapters for angled routing         |
| Inner 45° Angled Ear Adapter | Use for mounting with center adapters for angled routing         |