

# Transcend®

## Installation Guide for PoE Gateway

READ AND FOLLOW ALL SAFETY INSTRUCTIONS

### **GATEWAY MUST BE INSTALLED BY A QUALIFIED ELECTRICIAN.**

**(CHECK WITH LOCAL AND NATIONAL CODES FOR PROPER INSTALLATION).**

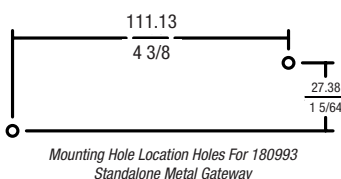
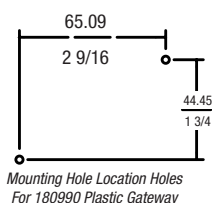
- 1 CAUTION** – Observe precautions for handling electrostatic sensitive gateways.
- 2 WARNING** – Risk of Electric Shock. Do not handle energized gateway with wet hands or when standing on wet or damp surfaces.
- 3 WARRANTY** – voided if gateway has been modified from its original configuration.
- 4** Do not use outdoors.
- 5** Use only with Class 2 Power Unit – 60VDC maximum.
- 6** Conforms to UL 2108 standard – Certified to CAN/CSA standard C22.2 NO. 250.13.
- 7** Suitable for damp locations.

## Transcend®

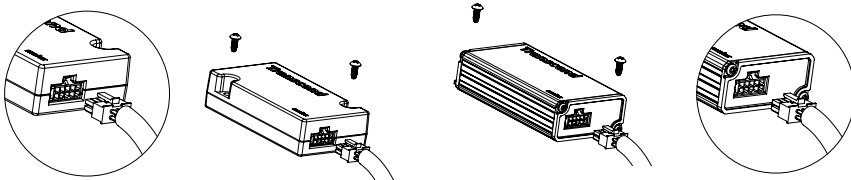
### Installation Guide for PoE Gateway

READ AND FOLLOW ALL SAFETY INSTRUCTIONS

- 8 Mounting pattern is shown below for both versions (*Plastic and Metal gateways*).

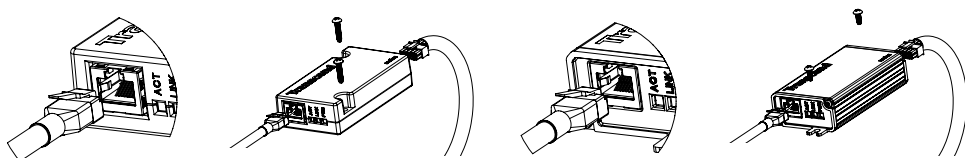


- 9 Snap in the wire harness male connector into the female connector as shown below:



- 10 Use two #8 self-tapping screws to mount the PoE Gateway as shown (*screws not provided*).

- 11 On the front top side of the PoE Box connect PoE CAT cable until you hear a “CLICK”. Use a UTP (*unshielded twisted pair*) CAT5E or CAT6 cable\*. The maximum length of cable should not exceed 100 meters.



\*Please note the Power LED indicator will turn on once you have power. The LINK and ACTIVE indicators will blink on and off rapidly once you have network connection.