



**Delivering high-density routing solutions, FlexiBend™ MPO/MTP\* Flexible-Boot Cable Assemblies alleviate cable congestion issues with boots designed to allow cable exit in varying positions, from 0 to 90°**

Optical cable routing is becoming increasingly difficult for installers to work with when installing hundreds of fibers in dense optical patch panels. Molex's FlexiBend™ MPO /MTP\* Flexible-Boot Cable Assemblies solve this congestion problem and greatly improve cable grooming with the ability to bend and direct fiber in any direction, from straight to 90°, in tight-space configurations like equipment cabinets with doors and high-density racks greatly improving cable grooming.

## **FlexiBend™ MPO/MTP\* Flexible-Boot Cable Assemblies**

12- and 24-Fiber  
Cable Assemblies



FlexiBend™ MPO/MTP\* Flexible-Boot  
Cable Assemblies

### **Features and Benefits**

Bendable strain-relief boots designed to secure any configuration, from straight to 90°

Offer high-density cable routing in tight spaces. Enables orientation of cables to a different position without disconnection. Bend locks in place with internal metal wire

12- and 24-fiber round cable options

Ideal for use in applications such as QSFP, CXP and CFP modules. Round cable improves routing, bending and handling compared to flat-ribbon cable

Tested to GR-1435, ISSUE 2 specification

Ensures product performance over multiple bends in various directions

Singlemode and multimode cables

Provide options for different transmission link distances using OM3, OM4 and OS2 fibers

Rated up to 25 bends in the 0, 45 and 90° positions

Provides “stay-in-place” boot positioning for greatly improved cable management/grooming off the card face

### **Applications**

#### **Datacom Markets**

- Hubs
- Routers
- Storage
- Servers

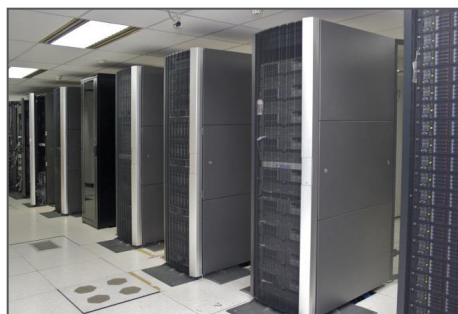
#### **Telecom**

- Central offices
- OSP
- Hubs

#### **Industrial**

#### **Medical**

#### **Aerospace and Defense**



High-density servers

\*MTP is a registered trademark of US Conec Ltd.



## Specifications

### Reference Information

Packaging: Bag

Mates With:

MPO adapters (Series 106114)

Active Devices (QSFP, CXP, CFP)

Use With: Any receptacle that needs

a MPO cable interface

Designed In: Millimeters

RoHS: Yes - Compliant by Exemption

Halogen Free: Yes

### Mechanical

Mating Force:

12-Fiber Versions: 10N

24-Fiber Versions: 20N

Durability (min.): 250 cycles –

Per Bellcore GR-1435

Insertion Loss (IL) (max.):†

12-Fiber, Multimode and

Singlemode Fibers — .75dB

24-Fiber, Multimode and

Singlemode Fibers — 1.0dB

Return Loss:

12 and 24 Fiber,

Multimode — -20dB

12 and 24 Fiber,

Singlemode — -55dB

### Physical

Housing: Polymer UL94V-0

Ferrule Material: PPS

Operating Temperature: -40 to +80°C

Cable Rating Temperature (Typical):

-20 to +70°C

Color Options for MPO Housings:

SM Low Loss — Yellow

MM OM3/OM4 — Aqua

SM/APC — Green

MM — Beige MM — Erika Violet

MM or SM — Black

## FlexiBend™ MPO/MTP\* Flexible-Boot Cable Assemblies

†Note: lower IL options are available for low-loss and elite versions; contact Molex for further information

## Ordering Information

Ordering Information	Description	Fiber Type (µm)	Gender	Mode
<a href="#">Custom – Contact Molex</a>	12 and 24 round cable <a href="#">Series 106260</a>	50/125 62.5/125 9/125µm	Male/Female	Multimode and Singlemode

\*MTP is a registered trademark of US Conec Ltd.

[www.molex.com/link/flexibend.html](http://www.molex.com/link/flexibend.html)