

## Type 2GT Evaluation Kit

## Evaluate LoRa® Edge module

The Type 2GT evaluation kit allows module testing and software development. The evaluation kit includes pin header for easy connection to a host MCU platform.

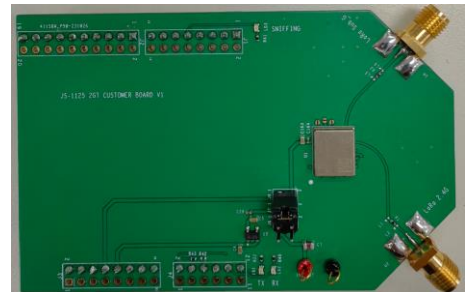
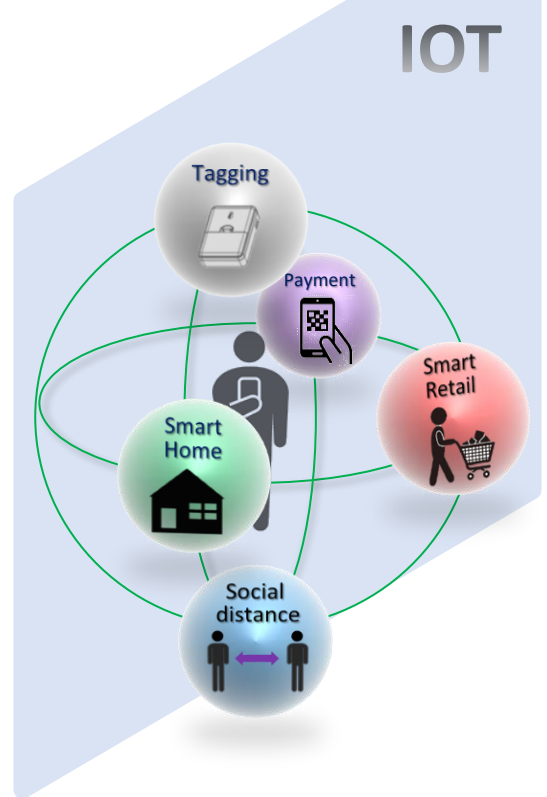
## Features

- Type 2GT module ( includes Semtech LR1121 )
- Sub-GHz LoRa and (G)FSK modulation
- 2.4GHz LoRa and (G)FSK modulation
- Long range FHSS on Sub-GHz, 1.9-2.1GHz, and 2.4GHz ISM band
- SATCOM S-band
- SATCOM Sub-GHz

## Benefits

- Drop-in replacement to Semtech LR1121 Mbed Shield
- Arduino interface
- Kit includes all antenna
- Switch for power supply selection
- Design guide available on myMurata

( <https://my.murata.com/en/home> )



Evaluation board ( antenna not shown )

Part Number	LBAA0XV2GT-001EVK
Sub-GHz LoRa Frequency	860MHz to 930MHz
2.4GHz LoRa Frequency	2.4GHz ISM band
S-band Frequency	1.9 – 2.1GHz
Dimensions	89 x 58 mm
Supply Voltage (V)	1.8 to 3.6
Applications	Smart meter, home automation, LoRaWAN or Sidewalk