

Pulse Transformers

Pulse Transformers for PLC Communication

AMT series



AEC-Q200

AMT45S type



FEATURES

- This is a pulse transformer for PLC communication that supports an operating temperature range of -40 to +125°C.
- This product achieves low insertion loss while ensuring high reliability through the use of metal terminals and laser welding, enabled by a proprietary manufacturing method.
- Compliant with AEC-Q200

APPLICATION

- Charging Control Circuit (PLC) for xEV Compliant with HomePlug Green PHY

PART NUMBER CONSTRUCTION

AMT45S	-	150	-	2P	-	TL	000
Series - type name		Inductance(min.) (μH)		Number of lines		Packaging style	Internal code

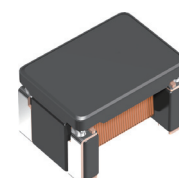
CHARACTERISTICS SPECIFICATION TABLE

Inductance	DC resistance	Withstand Voltage	Insulation resistance	Rated Voltage Between Primary and Secondary	Input Signal Voltage	Secondary Load Current	Part No.
(μH)min.	(Ω)max.	[AC] 60sec. (Vrms)	[DC] 1kV (MΩ)min.	[DC] (V)max.	[AC] (Vp-p)max.	[AC] (mA)max.	
15.0	1.0	500	10	50	10	10	AMT45S-150-2P-TL000

Measurement equipment

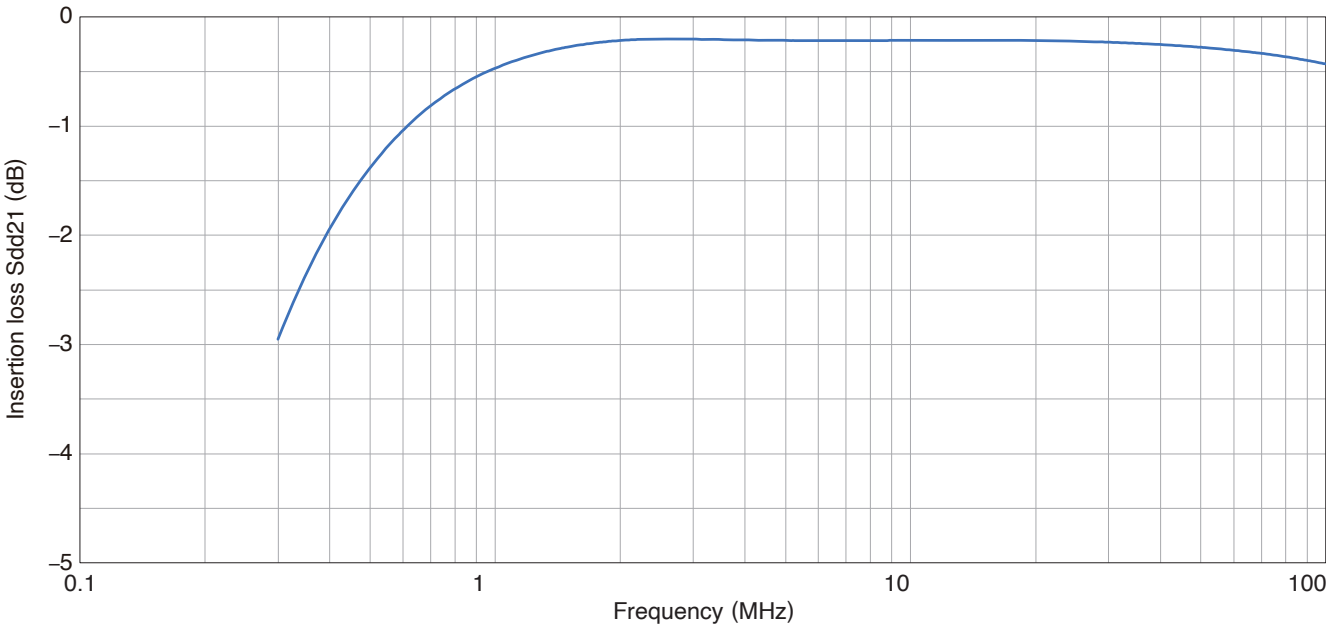
Measurement item	Product No. *	Manufacturer
Inductance	4294A	Keysight Technologies
DC resistance	4338A	Keysight Technologies
Withstand Voltage	TOS9201	KIKUSUI Electronics
Insulation resistance	4339B	Keysight Technologies

* Equivalent measurement equipment may be used.



AMT45S type

■ INSERTION LOSS VS. FREQUENCY CHARACTERISTICS(Reference Characteristics)



Measurement equipment

Product No. *	Manufacturer
5071C	Keysight Technologies

* Equivalent measurement equipment may be used.

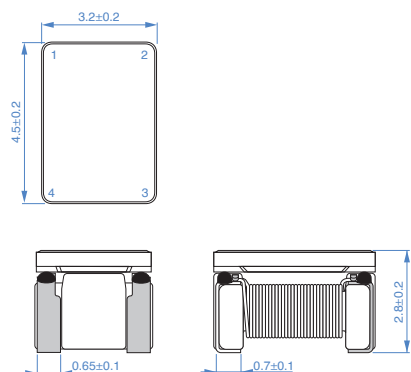
■ TEMPERATURE RANGE, INDIVIDUAL WEIGHT

Operating temperature range	Storage temperature range *	Individual weight
-40 to +125 °C	-40 to +125 °C	0.14g

* The storage temperature range is for after the assembly.

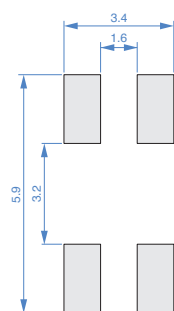
AMT45S type

SHAPE & DIMENSIONS



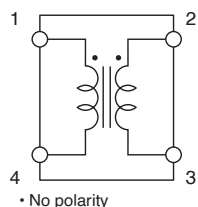
Dimensions in mm

RECOMMENDED LAND PATTERN

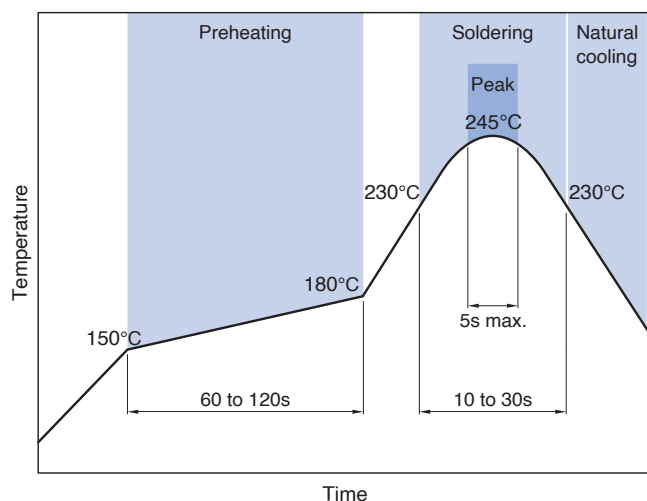


Dimensions in mm

CIRCUIT DIAGRAM

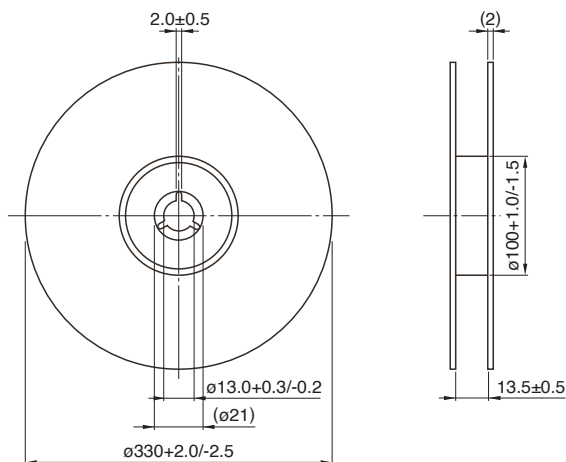


RECOMMENDED REFLOW PROFILE



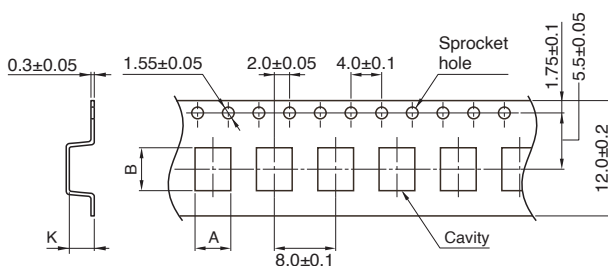
PACKAGING STYLE

REEL DIMENSIONS



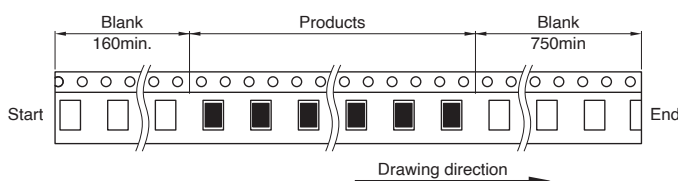
Dimensions in mm

TAPE DIMENSIONS



Dimensions in mm

Type	A	B	K
AMT45S	(3.6)	(4.9)	(3.05)



Dimensions in mm

PACKAGE QUANTITY

Package quantity	2,500 pcs/reel
------------------	----------------

REMINDERS FOR USING THESE PRODUCTS

Before using these products, be sure to request the delivery specifications.

SAFETY REMINDERS

Please pay sufficient attention to the warnings for safe designing when using this products

REMINDERS

- The storage period is within 12 months. Be sure to follow the storage conditions (temperature: 5 to 40°C, humidity: 10 to 75% RH or less).
If the storage period elapses, the soldering of the terminal electrodes may deteriorate.
- Do not use or store in locations where there are conditions such as gas corrosion (salt, acid, alkali, etc.).
- Soldering corrections after mounting should be within the range of the conditions determined in the specifications.
If overheated, a short circuit, performance deterioration, or lifespan shortening may occur.
- When embedding a printed circuit board where a chip is mounted to a set, be sure that residual stress is not given to the chip due to the overall distortion of the printed circuit board and partial distortion such as at screw tightening portions.
- Self heating (temperature increase) occurs when the power is turned ON, so the tolerance should be sufficient for the set thermal design.
- Carefully lay out the coil for the circuit board design of the non-magnetic shield type.
A malfunction may occur due to magnetic interference.
- Use a wrist band to discharge static electricity in your body through the grounding wire.
- Do not expose the products to magnets or magnetic fields.
- Do not use products that have received any excessive mechanical shock such as by being dropped.
- The performance of the product may deteriorate or at the worst case open if coating materials are used, thus please assess the situation beforehand by tak-ing this factor into consideration.
- Due to the application of mechanical stress after mounting and handling such as contact, disconnection may occur.
- Do not use for a purpose outside of the contents regulated in the delivery specifications.
- The products listed on this specification sheet (the "Products") are intended for incorporation into automobile and/or equipment to be installed in automobile on the grounds that (i) the Products are used in accordance with the conditions and scope stated in this specification sheet and (ii) said automobile and/or equipment involving the Products are used under a normal operation and use condition.

Except for said incorporation into automobile and/or equipment installed in automobile, the Products are not designed or warranted to meet the requirements of the applications listed below, whose performance and/or quality require a more stringent level of safety or reliability, or whose failure, malfunction or trouble could cause serious damage to society, person or property. Please understand that we are not responsible for any damage or liability caused by use of the Products in any of the applications listed below or for any other use exceeding the range or conditions set forth in this specification sheet.

If you intend to use the Products beyond the condition and scope of this specification sheet or in any of the applications listed below, please contact with our sales office.

We will separately discuss with you applicable specification suitable for your intended use.

- | | |
|---|--|
| (1) Aerospace/aviation equipment | (7) Transportation control equipment |
| (2) Transportation equipment (cars, electric trains, ships, etc.) | (8) Public information-processing equipment |
| (3) Medical equipment | (9) Military equipment |
| (4) Power-generation control equipment | (10) Electric heating apparatus, burning equipment |
| (5) Atomic energy-related equipment | (11) Disaster prevention/crime prevention equipment |
| (6) Seabed equipment | (12) Safety equipment |
| | (13) Other applications that are not considered general-purpose applications |

When designing your equipment involving the Products, you are kindly requested to take into consideration securing protection circuit/equipment or providing backup circuits, etc. in your equipment, to ensure higher safety.

As stated above, the Products are intended for incorporation into automobile and/or equipment to be installed in automobile, however, it is not prohibited to use the Products for general electronic equipment which is not required the same high level or reliability as automobile, or which is unlikely to damage its users' life, body and property or to cause extensive impact on society. Accordingly, all description in this specification sheet is applied if the Products are incorporated into general electronic equipment which is used for normal application under a normal operation and use condition.