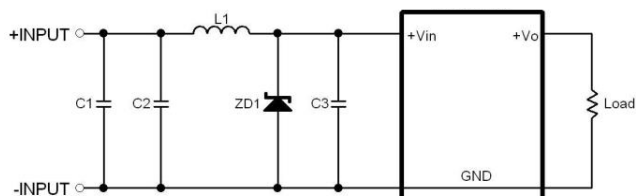


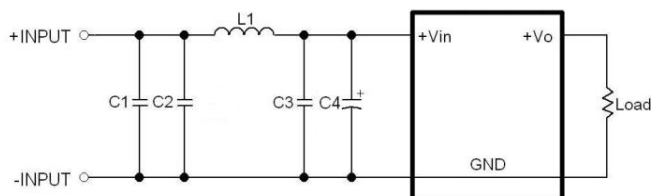
### EMI Consideration

Suggested filter to comply with EN 55032 Conducted and Radiated Emissions Class A and Class B limits

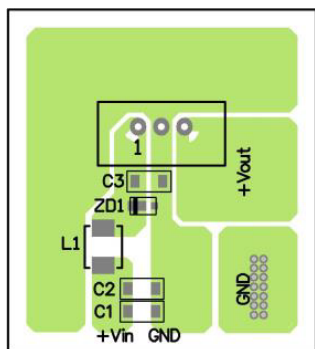
#### TSR 2-05xx models



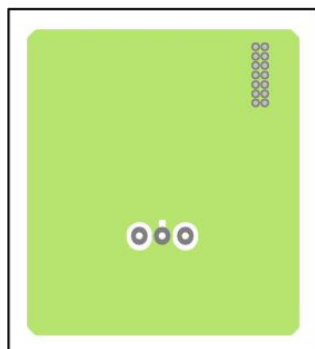
#### TSR 2-24xxx models



PCB layout suggestion

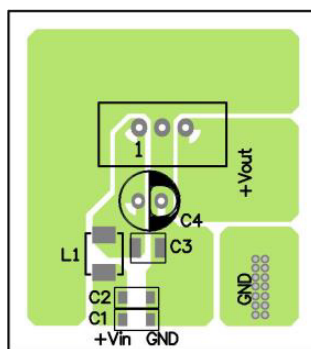


TOP view

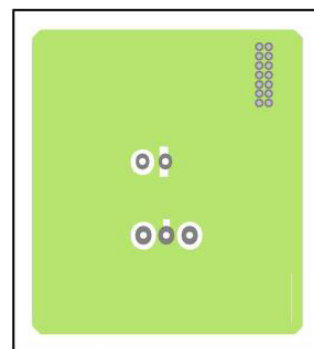


BOTTOM view

PCB layout suggestion



TOP view



BOTTOM view

### Suggested components to comply with EN 55032 Conducted and Radiated Emissions Class A and Class B limits

Model	C1	C2	C3	L1
TSR 2-05xx	-	47 $\mu$ F / 6.3 V 1206 MLCC	47 $\mu$ F / 6.3 V 1206 MLCC	1 $\mu$ H TCK-159
TSR 2-24xxx	10 $\mu$ F / 50 V 1206 MLCC	10 $\mu$ F / 50 V 1206 MLCC	10 $\mu$ F / 50 V 1210 MLCC	5.6 $\mu$ H TCK-141

### Suggested components for input transient voltage (surge) during start-up

Model	ZD1	C4
TSR 2-05xx	Zener Diode 6.2 V ROHM, TFZVTR6.2B	-
TSR 2-24xxx	-	56 $\mu$ F / 50 V Al Cap. Chemi-con KY

TCK-141 datasheet: [www.tracopower.com/products/tck141.pdf](http://www.tracopower.com/products/tck141.pdf)

TCK-159 datasheet: [www.tracopower.com/products/tck159.pdf](http://www.tracopower.com/products/tck159.pdf)