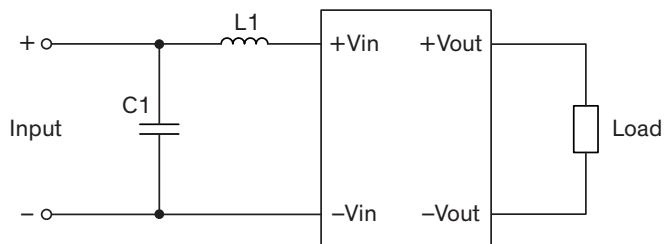


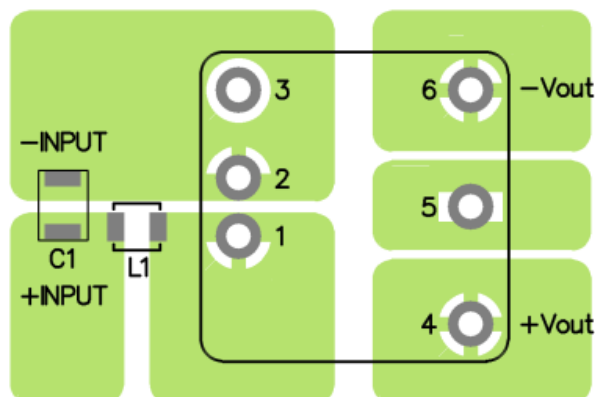
EMI Consideration

Suggested filter to comply with EN 55032 Conducted and Radiated Emissions Class A limits

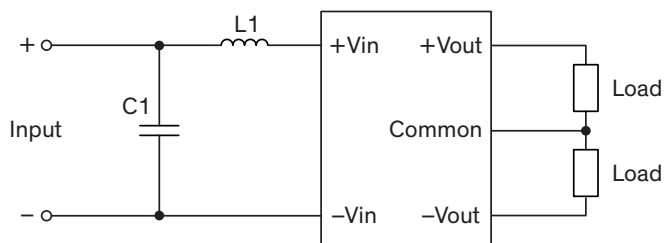
Single output models



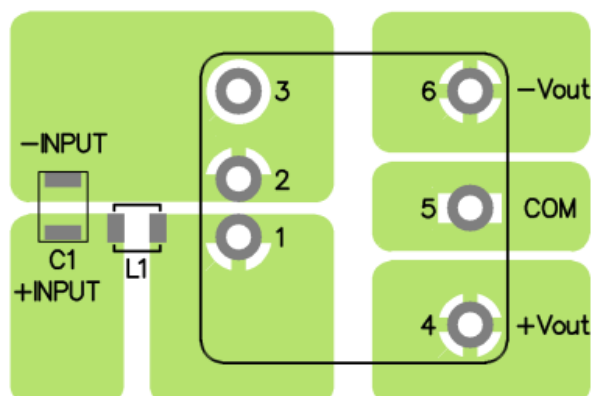
Layout suggestion Top View



Dual output models



Layout suggestion Top View



Suggested components to comply with EN 55032 Conducted and Radiated Emissions Class A limits

Model	C1	L1
THN 30-24xxWIR	4.7 μ F / 50 V / 1812 MLCC	2.2 μ H / TCK-097
THN 30-48xxWIR	4.7 μ F / 100 V / 1812 MLCC	10 μ H / TCK-070

TCK-070 datasheet: www.tracopower.com/products/tck070.pdf

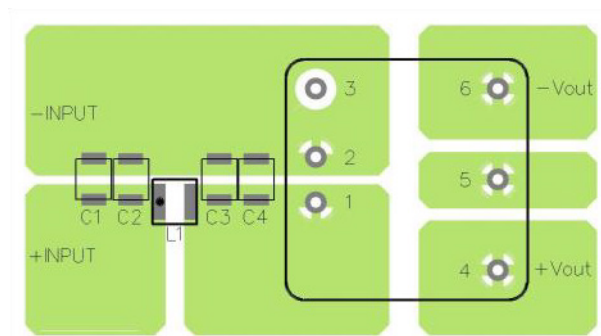
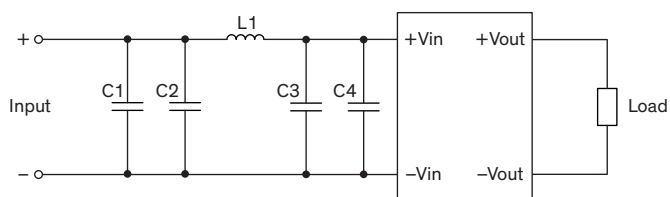
TCK-097 datasheet: www.tracopower.com/products/tck097.pdf

EMI Consideration

Suggested filter to comply with EN 55032 Conducted and Radiated Emissions Class A limits

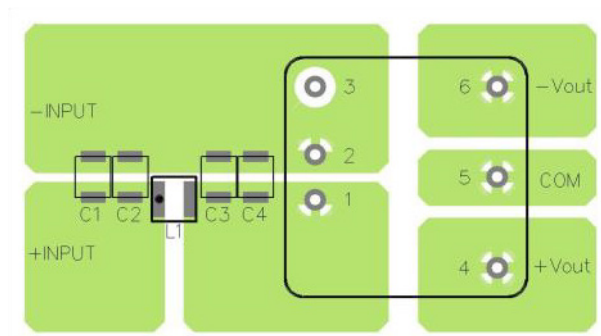
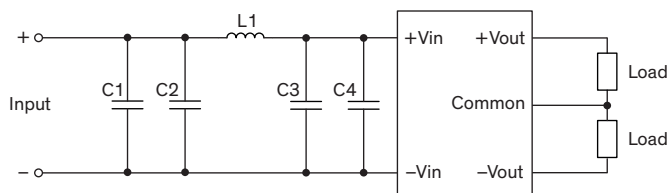
Single output models

Layout suggestion Top View



Dual output models

Layout suggestion Top View



Suggested components to comply with EN 55032 Conducted and Radiated Emissions Class A limits

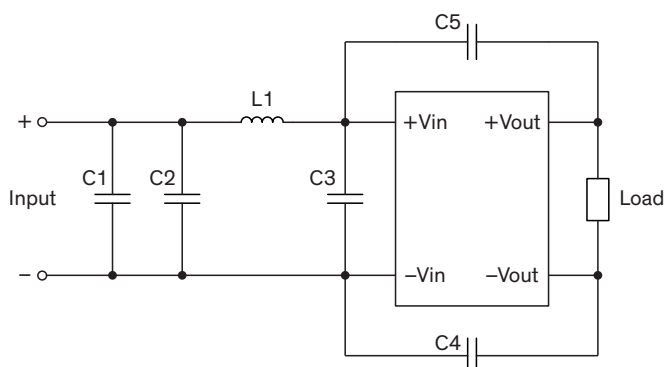
Model	C1, C2, C3, C4	L1
THN 30-72xxWIR	1 μ F / 250 V / 1812 MLCC	100 μ H / TCK-182

TCK-182 datasheet: www.tracopower.com/products/tck182.pdf

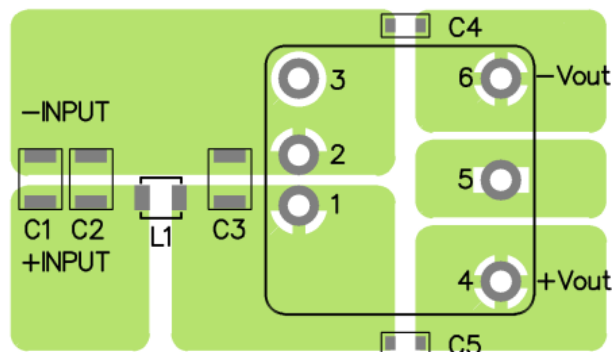
EMI Consideration

Suggested filter to comply with EN 55032 Conducted and Radiated Emissions Class B limits

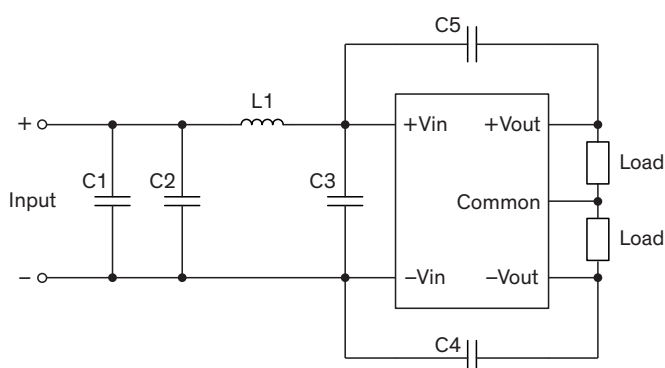
Single output models



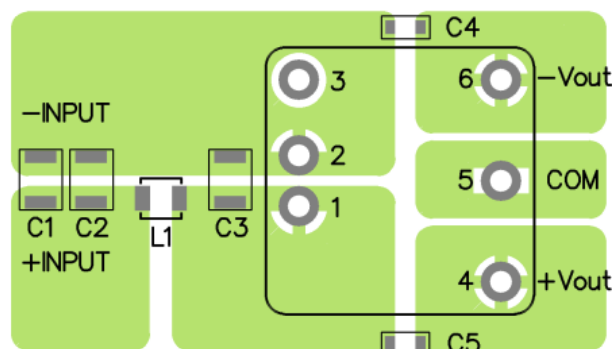
Layout suggestion Top View



Dual output models



Layout suggestion Top View



Suggested components to comply with EN 55032 Conducted and Radiated Emissions Class B limits

Model	C1, C2, C3	C4, C5	L1
THN 30-24xxWIR	4.7 μ F / 50 V 1812 MLCC	1000 pF / 2 kV 1206 MLCC	2.2 μ H / TCK-097
THN 30-48xxWIR	4.7 μ F / 100 V 1812 MLCC	2200 pF / 2 kV 1206 MLCC	10 μ H / TCK-070

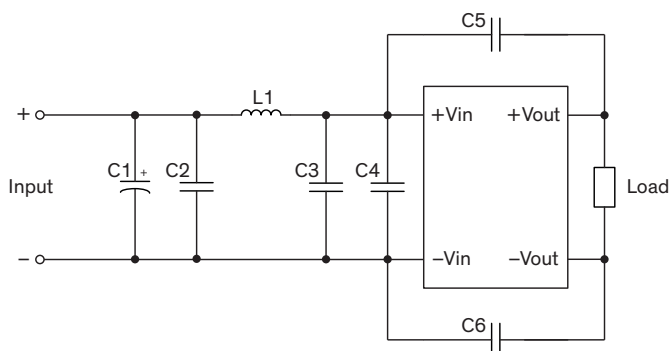
TCK-070 datasheet: www.tracopower.com/products/tck070.pdf

TCK-097 datasheet: www.tracopower.com/products/tck097.pdf

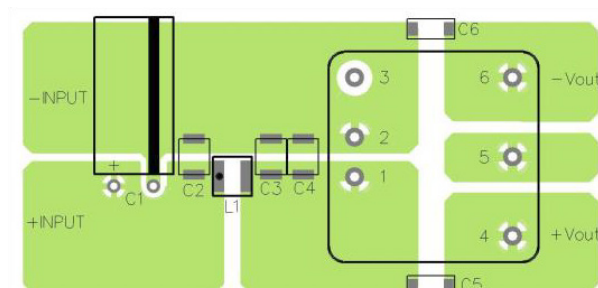
EMI Consideration

Suggested filter to comply with EN 55032 Conducted and Radiated Emissions Class B limits

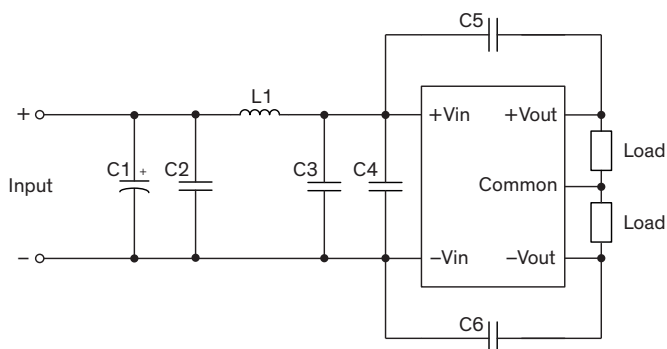
Single output models



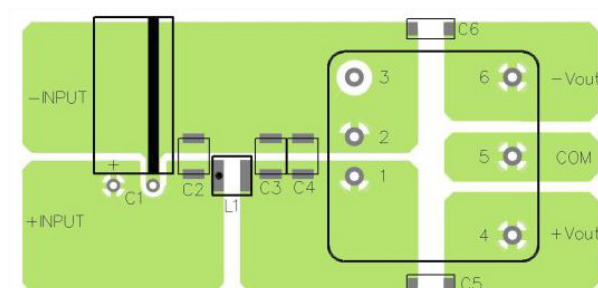
Layout suggestion Top View



Dual output models



Layout suggestion Top View



Suggested components to comply with EN 55032 Conducted and Radiated Emissions Class B limits

Model	C1	C2, C3, C4	C5, C6	L1
THN 30-72xxWIR	47 μ F / 200 V Al. Cap. / KXJ	1 μ F / 250 V 1812 MLCC	1000 pF / 3 kV 1808 MLCC	100 μ H / TCK-182

TCK-182 datasheet: www.tracopower.com/products/tck182.pdf