

6000 – 8000 MHz UWB EMBEDDED CHIP ANTENNA

Part Numbers: L000601-01
L000601-80

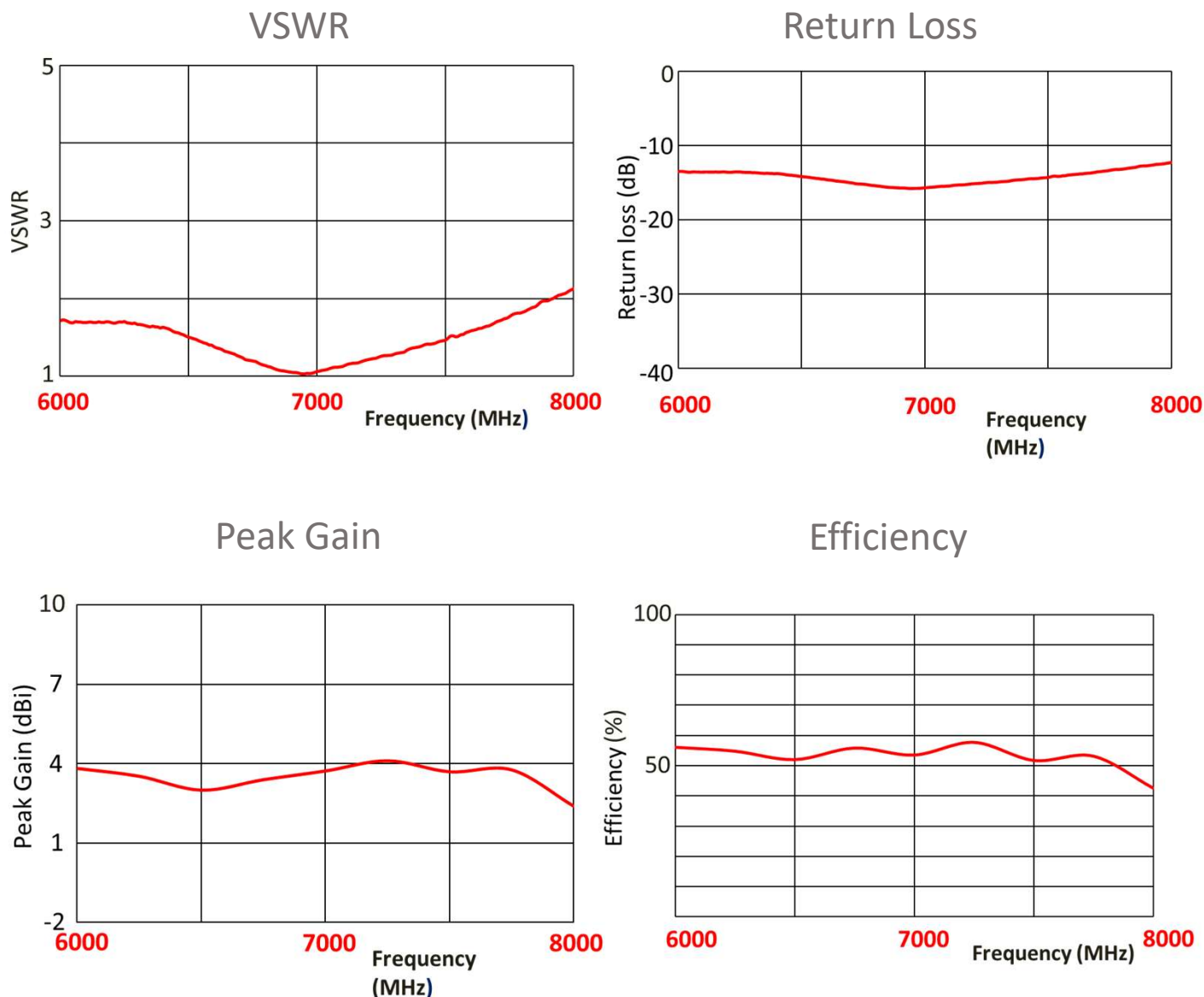
FEATURES & BENEFITS

- UWB channel 5,6,7,8,9
- On board SMD PCB antenna
- Bandwidth and performance dependent on ground plane size/ design suggested minimum ground plane length from antenna feed is 25mm

SPECIFICATIONS

| | |
|--|--|
| Frequency Range (MHz) | 6000-8000 |
| VSWR | < 2.5 :1 |
| Average Efficiency | 53.1 % |
| Peak Gain | 3.7 dBi |
| Average Gain | -2.8 dBi |
| Power Handling | 10 Watt cw |
| Feed Point Impedance | 50 ohms |
| Polarization | Linear |
| Size (L x W x H) | 6.0 mm x 5.0 mm x 0.5 mm (L/W \pm 0.3mm ; H \pm 0.15mm) |
| Weight | < 1.5 g |
| Mounting | Surface mount |
| Operating Temperature | -40 to +125°C |
| Storage Temperature | -40 to +85°C |
| Packaging Specification | Bag & Box / Tape & Reel |
| Hazardous Materials | A certificate of conformance is available from the product page on TE website. |
| Data measured on reference ground plane of 25 mm ground length and 20 mm width, application data might vary. | |

RF DATA (Shown as L000601-1 : Others can vary with different ground lengths.)

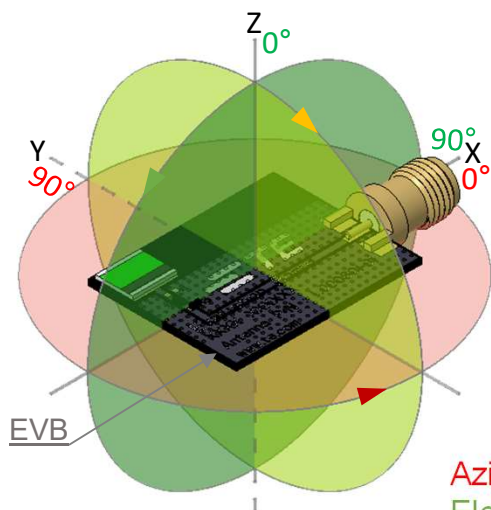


Data measured on reference ground plane of 25mm ground length and 20mm width, application data might vary.

RADIATION PATTERN

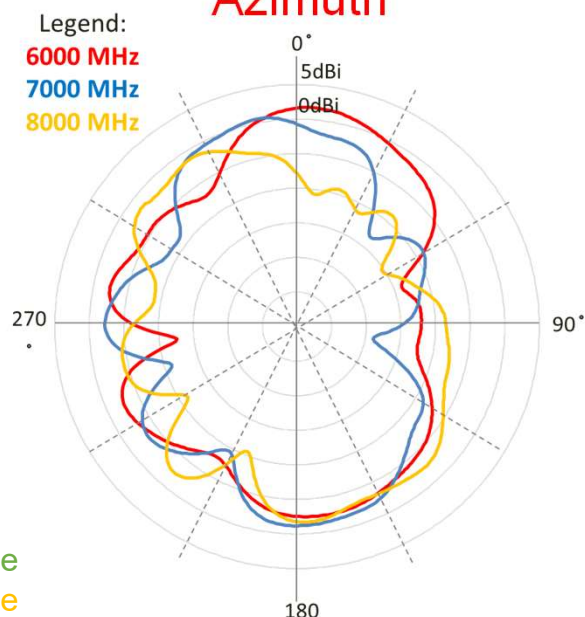
(Shown as L000601-1 : Others can vary with different ground lengths.)

Test setup

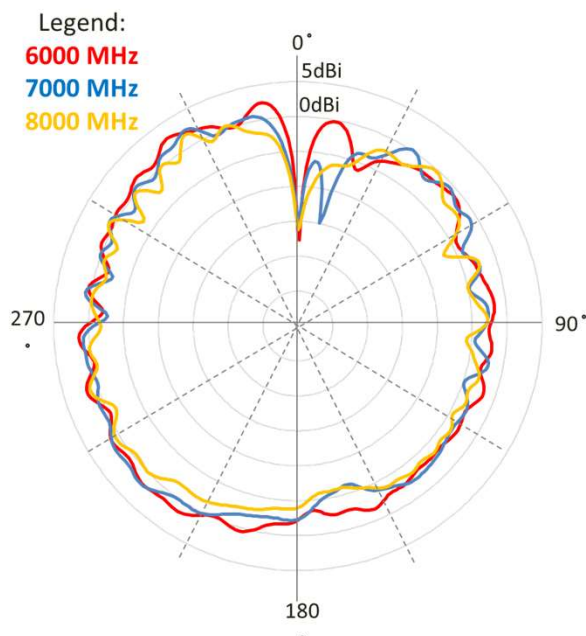


Azimuth Plane
Elevation 1 Plane
Elevation 2 Plane

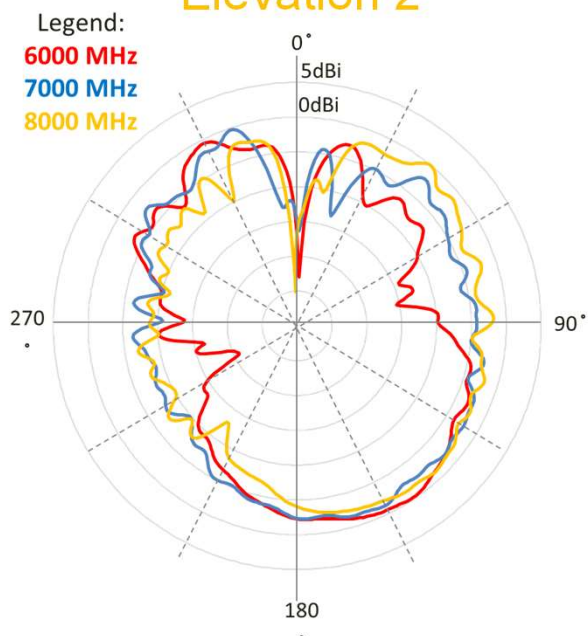
Azimuth



Elevation 1



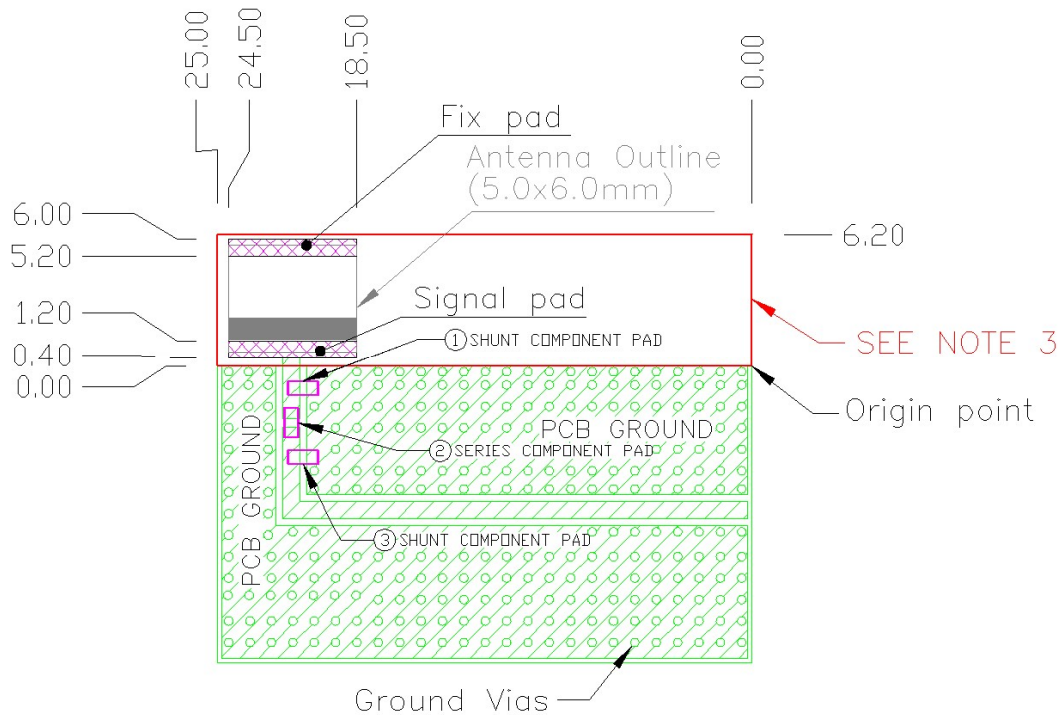
Elevation 2



Data measured on reference ground plane of 25mm ground length and 20mm width, application data might vary.

MOUNTING GUIDE

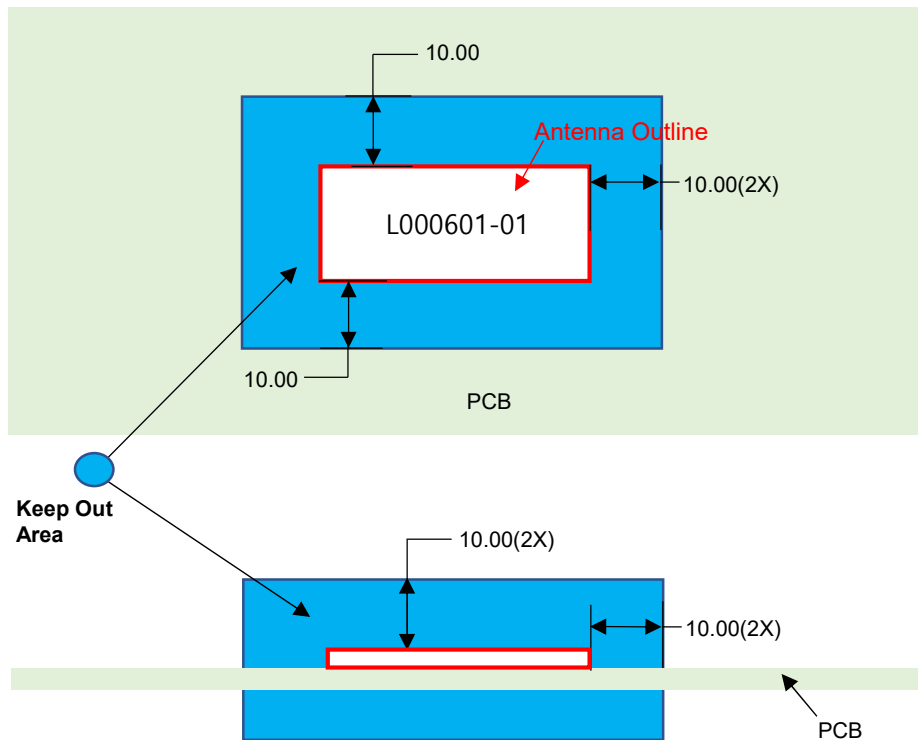
Top View



- NOTES:**
1. Antenna must be mounted on the edge of PCB.
 2. NC = Non connection (mechanical mounting pads).
 3. No copper allowed in designated area on all PCB layers –
 4. For more information please call TE.
 5. Measured with below matching circuit condition.
① 0 ohm, ② NC, ③ NC.
 6. Reference PCB Dimension(mm) - 25 x 20 x 1.6

Dimension: mm
Diagrams is not to scale

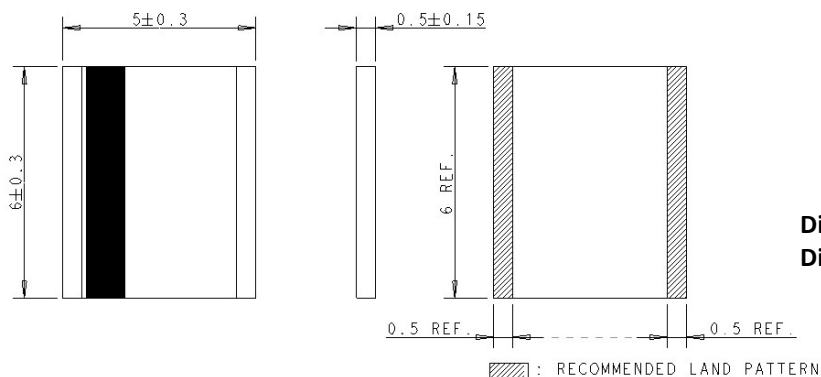
KEEP OUT AREA



- NOTES: 1. Antenna designed to be mounted on PCB.
2. Area in blue above indicates Keep Out Area.
3. For more information please call TE.

Dimensions: mm
Diagram is not to scale

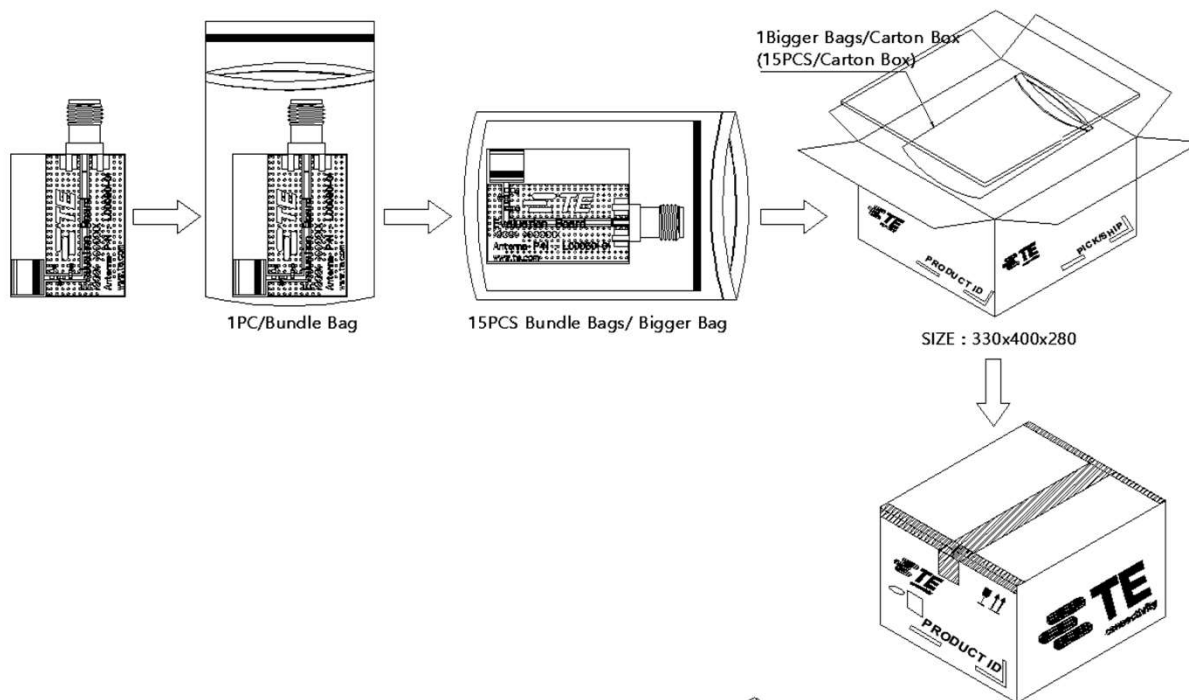
DIMENSIONS



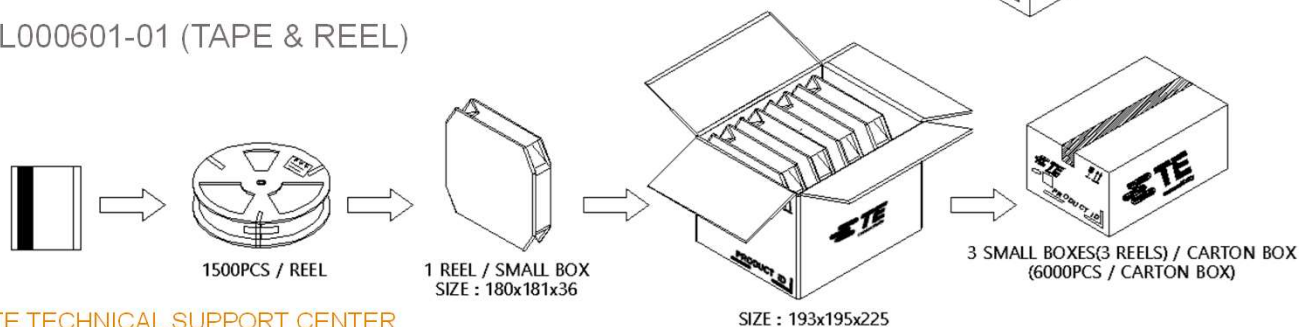
Dimension: mm
Diagrams is not to scale

PACKAGING

L000601-80 (BULK)



L000601-01 (TAPE & REEL)



TE TECHNICAL SUPPORT CENTER

| | |
|-------------------|-----------------------|
| USA: | +1 (800) 522-6752 |
| Canada: | +1 (905) 475-6222 |
| Mexico: | +52 (0) 55-1106-0800 |
| Latin/S. America: | +54 (0) 11-4733-2200 |
| Germany: | +49 (0) 6251-133-1999 |
| UK: | +44 (0) 800-267666 |
| France: | +33 (0) 1-3420-8686 |
| Netherlands: | +31 (0) 73-6246-999 |
| China: | +86 (0) 400-820-6015 |

For phone numbers in other countries, go to te.com/support-center

te.com

TE Connectivity, TE Connectivity (logo) are trademarks. All other logos, products and/or company names referred to herein might be trademarks of their respective owners.

The information given herein, including drawings, illustrations and schematics which are intended for illustration purposes only, is believed to be reliable. However, TE Connectivity makes no warranties as to its accuracy or completeness and disclaims any liability in connection with its use. TE Connectivity's obligations shall only be as set forth in TE Connectivity's Standard Terms and Conditions of Sale for this product and in no case will TE Connectivity be liable for any incidental, indirect or consequential damages arising out of the sale, resale, use or misuse of the product. Users of TE Connectivity products should make their own evaluation to determine the suitability of each such product for the specific application.

© 2020 TE Connectivity Ltd. family of companies All Rights Reserved.

09/2023