

(1.27 mm) .050"

SEAM SERIES

HIGH-SPEED/HIGH-DENSITY OPEN-PIN-FIELD

SPECIFICATIONS

For complete specifications and recommended PCB layouts see www.samtec.com?SEAM

Insulator Material:

Black LCP

Contact Material:

Copper Alloy

Operating Temp Range:

-55 °C to +125 °C

Current Rating

(7 mm stack height):

2.7 A per pin

(10 adjacent pins powered)

Plating:

Au or Sn over

50 μ" (1.27 μm) Ni

Working Voltage:

240 VAC

RoHS Compliant:

Yes

Lead-Free Solderable:

Yes

RECOGNITIONS

For complete scope of recognitions see www.samtec.com/quality



FILE NO. E111594

STANDARDS

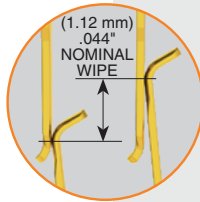
- VITA 47
- VITA 57.1 FMC
- VITA 57.4 FMC+
- VITA 74 VNX

PROTOCOLS

- 100 GbE
- Fibre Channel
- Rapid I/O
- PCI Express®
- SATA
- InfiniBand™

Mates with:
SEAF, SEAFP

Standoffs:
JSO



Low
insertion/
extraction
forces

Up to 500
Pins



Solder
charges

HIGH-SPEED CHANNEL PERFORMANCE

SEAF/SEAM @ 10 mm Mated Stack Height

Rating based on Samtec reference channel.

For full SI performance data visit Samtec.com or contact SIG@samtec.com

PAM 4

56

G b p s

OTHER SOLUTIONS

- Up to 560 pins

SEAM

NO. PINS
PER ROWLEAD
STYLEPLATING
OPTIONNO. OF
ROWSSOLDER
TYPE

A

K

TR

–10, –15, –20,
–30, –40, –50
(–10 only available in 04 row)
(–15 is only available in 4 Row
with –02.0 lead style and 10
row with any lead style)

Specify
LEAD
STYLE
from
chart

NO. OF ROWS	B
–04	(7.06) .278
–05, –06	(9.60) .378
–08	(12.14) .478
–10	(14.68) .578

–L
= 10 μ"
(0.25 μm)
Gold on
contact area,
Matte Tin on
solder tail

–S
= 30 μ"
(0.76 μm)
Gold on
contact area,
Matte Tin on
solder tail

–04
= Four Rows
(–06.5 not
available)

–05
= Five Rows
(–06.5 not
available)

–06
= Six Rows
(–06.5 not
available)

–08
= Eight Rows

–10
= Ten Rows

–1
= Tin/Lead Alloy
Solder Charge

–2
= Lead-Free
Solder Charge

–A
= Alignment Pins
(Required. Arrays
will not self-center
on solder pads)

–K
= Polyimide film
Pick & Place Pad

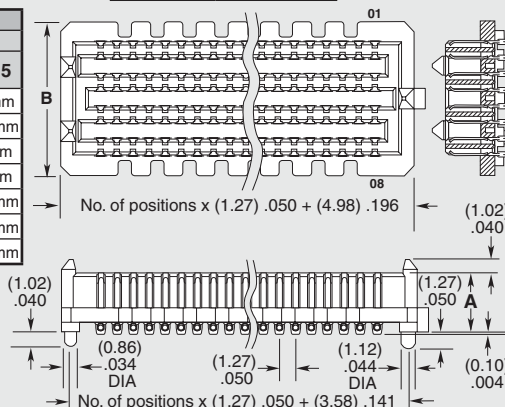
–TR
= Tape & Reel

SEAM LEAD STYLE	MATED HEIGHTS SEAF LEAD STYLE			
	–05.0	–06.0	–06.5	–07.5
–02.0	7 mm	8 mm	8.5 mm	9.5 mm
–03.0	8 mm	9 mm	9.5 mm	10.5 mm
–03.5	8.5 mm	9.5 mm	10 mm	11 mm
–06.5	11.5 mm	12.5 mm	13 mm	14 mm
–07.0	12 mm	13 mm	13.5 mm	14.5 mm
–09.0	14 mm	15 mm	15.5 mm	16.5 mm
–11.0	16 mm	17 mm	17.5 mm	18.5 mm

Notes:
Patented

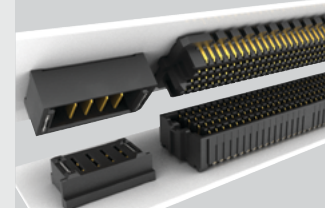
IPC-A-610F and
IPC J-STD-001F Class 3
solder joint.

Some sizes, styles and
options are non-standard,
non-returnable.



LEAD STYLE	A
–02.0	(4.60) .181
–03.0	(5.59) .220
–03.5	(6.10) .240
–06.5	(9.14) .360
–07.0	(9.60) .378
–09.0	(11.60) .457
–11.0	(13.60) .535

POWER/SIGNAL APPLICATION



Compatible with
UMPT/UMPS for flexible
two-piece power/signal solutions

Due to technical progress, all designs, specifications and components are subject to change without notice.

WWW.SAMTEC.COM

All parts within this catalog are built to Samtec's specifications.

Customer specific requirements must be approved by Samtec and identified in a Samtec customer-specific drawing to apply.