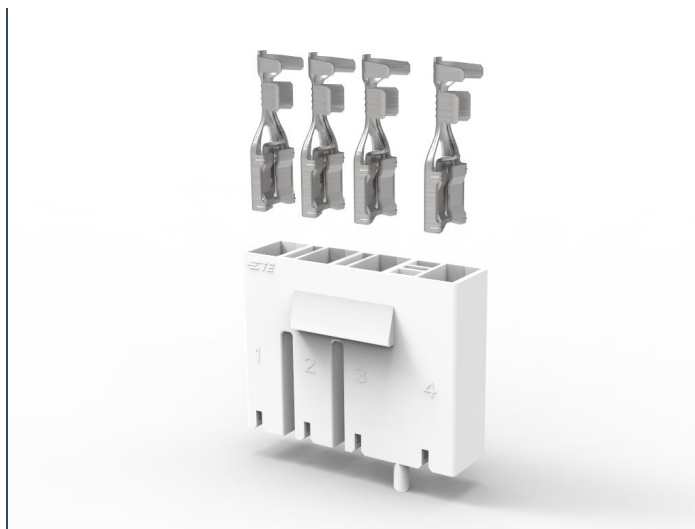


INTRODUCING

POSITIVE LOCK MULTI- POSITION CONNECTOR WITH X-LIF TERMINAL

- Multi-position housing
- Extra low insertion force
- Ergonomic design



TE Connectivity's new Positive Lock multi-position connector with extra low insertion force (X-LIF) terminal was developed to meet industry demands for improved manufacturing efficiency and easier part mating.

APPLICATIONS

- Air conditioner
- Microwave oven
- PCB panel

SPECIFICATIONS

- Product specification: [108-106568](#)
- Application specification: [114-106568](#)

ELECTRICAL

- 18-14 AWG - 15A max

PRODUCT COMPLIANCE/CERTIFICATION

- UL1977
- RoHs, REACH compliance
- VDE

MATERIALS

- Housings: PBT
 - UL94V-0
 - GWT 750°C
- Contact: Tin plated, Copper alloy

KEY BENEFITS

- Extra low insertion force (X-LIF) provides more ergonomic assembly
- Multi-position housing (3 or 4 position) increases assembly efficiency
- Asymmetrical housing eliminates risk of mis-mating
- Positive lock system ensures reliable connection with audible mating confirmation and high retention force
- Terminal un-locking features allow easy separation from tabs
- Robust mechanical design reduces likelihood of damage during assembly

LEARN MORE

- [Landing Page](#)
- [Product Flyer](#)
- [Customer Presentation](#)