

CATAN CONTROL PANEL

Touch display for local override operation and configuration of Catan controllers and Catan extension modules

Data sheet
111451_en_03

© Phoenix Contact

2024-10-16



1 Description

The Catan Control Panel is a touch display that can be optionally plugged into the Catan controller and all Catan extension modules as an accessory. The status of each I/O channel can be viewed via a clearly structured user interface. The current values can be overridden for both the output channels and the input channels. The display can also be operated remotely from the basic device, e.g., in a control cabinet door. A mounting kit and a USB-C extension are available for mounting.

Features

- Connection to all Catan modules via USB-C
- Tool-free mounting and removal even during operation
- Easy-to-read, high-contrast IPS display with capacitive touch sensor
- Intuitive operation with status indicator and override of the I/O channels of the underlying module
- Access protection via PIN

Observe these notes



Observe the documentation for the Catan controller or Catan extension module used.



Make sure you always use the latest documentation.

It can be downloaded at: phoenixcontact.com/product/1371366

2 Table of contents

1	Description	1
2	Table of contents	2
3	Ordering data	3
4	Technical data	3
5	Internal circuit diagram	5
6	For your safety	5
6.1	Intended use	5
6.2	Electrical safety	5
6.3	Installation	5
6.4	Applications with UL approval	5
7	Notes on cleaning	6
8	Enable local override operation	6
9	Licensing information regarding open source software	6

3 Ordering data

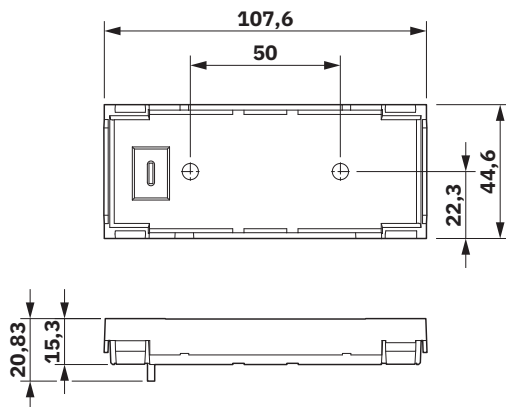
Description	Type	Item no.	Pcs./Pkt.
Touch display for local override operation and configuration of Catan controllers and Catan extension modules. Display size 2.4". Connection via USB-C connector.	CATAN CONTROL PANEL	1371366	1
Accessories	Type	Item no.	Pcs./Pkt.
Mounting set for remote operation of the Catan display	CATAN DISPLAY MOUNT	1478438	1
Extension cable for display for remote operation, length 2 m	NBC-CATAN-UCML/2.0-PVC/UCFL	1665797	1
Extension cable for display for remote operation, length 5 m	NBC-CATAN-UCML/5.0-PVC/UCFL	1665801	1

Additional ordering data

For information on the controller or the extension modules, please refer to the product-specific documentation.

4 Technical data

Dimensions (nominal sizes in mm)



Length	107.6 mm
Width	44.6 mm
Height	15.3 mm

General data

Material	Polycarbonate (Housing)
Color	Lower housing part: traffic grey A (RAL 7042) Upper housing part: light gray (RAL 7035)
Weight	58 g
Mounting type	Snap onto the Catan controller or Catan extension module Remote mounting in the control cabinet door (Cable: see accessories, wall thickness: 1 mm ... 4 mm)
Mounting position	horizontal

Ambient conditions

Installation location	indoor use
Ambient temperature (operation)	-5 °C ... 50 °C (up to 3000 m above mean sea level)
Ambient temperature (storage/transport)	-40 °C ... 85 °C
Permissible humidity (operation)	5 % ... 95 % (non-condensing)
Permissible humidity (storage/transport)	5 % ... 95 % (non-condensing)
Degree of protection	IP20

Supply

Supply voltage	5 V DC (Via USB interface of the Catan modules)
Current draw	max. 160 mA

Interface: Connection to Catan controller or Catan extension module

Number of interfaces	1
Connection method	USB 2.0 full speed, connector type C
Transmission speed	max. 12 Mbps

Display

Display type	6.1 cm / 2.4"-TFT
Touch panel	yes
Reading angle	typ. 80 ° (Horizontal and vertical)
Screen resolution	320 x 240 Pixel(s)

Mechanical tests

Vibration resistance in accordance with EN 60068-2-6/IEC 60068-2-6	5g
Shock in accordance with EN 60068-2-27/IEC 60068-2-27	30g

Conformance with EMC directive**Immunity test in accordance with EN IEC 63044-5-2**

Electrostatic discharge (ESD)	Criterion A, ±4 kV contact discharge, ±8 kV air discharge
Electromagnetic fields	Criterion A, Field intensity: 10 V/m
Fast transients (burst)	Criterion A, ±500 V, Criterion B, ±1000 V
Conducted disturbance	Criterion A, Test voltage 10 V

**Noise emission test in accordance with
EN IEC 63044-5-2**

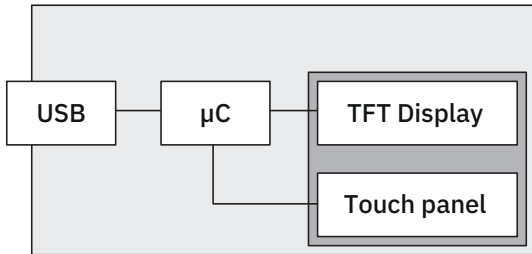
Class B

Approvals and manufacturer's declarations





The latest documents can be found at: www.phoenixcontact.com/product/1371366

5 Internal circuit diagram

Figure 1 Internal wiring of the terminal points



Key:

	USB interface
	Microcontroller
	TFT display
	Touch panel

6 For your safety

6.1 Intended use

Use Catan modules only in accordance with the specifications in this data sheet.

If the equipment is used in a manner not specified, the protection provided by the equipment may be impaired.

6.2 Electrical safety



WARNING: loss of electrical safety

If used incorrectly, device safety may be impaired.

Observe the information given in this data sheet during installation, commissioning and operation.

6.3 Installation

The device has the enclosure rating IP20. Install the device in closed control cabinets or control boxes (junction boxes) with IP54 enclosure rating or higher.

For offset mounting of the display, observe the following: For the USB-C connecting cable, provide additional fastening material to prevent the cable from being unintentionally removed from the socket.

6.4 Applications with UL approval



Information:

To install the device in accordance with the UL/CSA/EN/IEC standards, the following rules must be observed.

- In applications with UL approval, the display must not be installed on the outside of a control cabinet.

7 Notes on cleaning

If the surface of the display is soiled, breathe on the surface and carefully wipe it with a soft, dry cloth.

In the case of more severe soiling, use a damp cloth with one of the following solvents:

- Isopropyl alcohol
- Ethyl alcohol

Do not rub too hard to avoid damaging the surface of the display.



CAUTION: Damage due to improper cleaning agents

Cleaning agents other than those mentioned above can damage the surface.

- Water
- Ketone
- Aromatic solvents



NOTE: Damage caused by contact with water, oil, and grease

Wipe off saliva and drops of water immediately. Contact with water over a longer period of time can result in deformation or fading of the color.

Avoid contact with oil and grease.

8 Enable local override operation

To enable local override operation for a Catan controller or Catan extension module, enter the required PIN via the connected Catan Control Panel. The default setting for the PIN is 42.



If you change the PIN, this change only applies to the module to which the display is connected.

9 Licensing information regarding open source software

Licensing information regarding open source software can be downloaded at the following address in the “Product details, Downloads, Data sheets” area:

www.phoenixcontact.com/product/1371366