

TBUS8-20-BRIDGE-7035 - DIN rail bus connector



1387011

<https://www.phoenixcontact.com/us/products/1387011>

Please be informed that the data shown in this PDF document is generated from our online catalog. Please find the complete data in the user documentation. Our general terms of use for downloads are valid.

DIN rail bus adapter for ICS, overall width: 20 mm, 8 parallel positions, color: light grey (similar to RAL 7035)



Your advantages

- Can be integrated into device applications based on ME-IO and ICS housings
- Increased maximum PCB surface
- Connection of the positions in the field with FMC connectors

Commercial data

| | |
|--------------------------------------|---------------|
| Item number | 1387011 |
| Packing unit | 10 pc |
| Minimum order quantity | 10 pc |
| Sales key | AC09 |
| Product key | ACHAGA |
| GTIN | 4063151763848 |
| Weight per piece (including packing) | 5.48 g |
| Weight per piece (excluding packing) | 3.87 g |
| Customs tariff number | 85389099 |
| Country of origin | PL |

TBUS8-20-BRIDGE-7035 - DIN rail bus connector



1387011

<https://www.phoenixcontact.com/us/products/1387011>

Technical data

Product properties

| | |
|-----------------------|------------------------|
| Product type | DIN rail bus connector |
| Product family | TBUS8-20.. |
| Number of positions | 8 |
| Pitch | 2.54 mm |
| Number of connections | 8 |

Electrical properties

Properties

| | |
|-----------------------------|-------------------------|
| Nominal current I_N | 6 A (parallel contacts) |
| Nominal voltage U_N | 32 V |
| Contact resistance | 3.91 mΩ |
| Rated voltage (III/3) | 32 V |
| Rated surge voltage (III/3) | 1.5 kV |
| Rated voltage (III/2) | 32 V |
| Rated surge voltage (III/2) | 1.5 kV |
| Rated voltage (II/2) | 32 V |
| Rated surge voltage (II/2) | 1.5 kV |

Material specifications

Material data - contact

| | |
|-------------------------|-------------|
| Contact material | Cu alloy |
| Surface characteristics | gold-plated |

Material data - housing

| | |
|--|-------------------|
| Color (Housing) | light gray (7035) |
| Insulating material | PA |
| Insulating material group | I |
| CTI according to IEC 60112 | 600 |
| Flammability rating according to UL 94 | V0 |

material specifications - connector

| | |
|----------|----|
| Color () | () |
|----------|----|

Dimensions

| | |
|------------|----------|
| Pitch | 2.54 mm |
| Width [w] | 24.3 mm |
| Height [h] | 37.25 mm |
| Length [l] | 11.3 mm |

Mounting

| | |
|---------------|-------------------|
| Mounting type | DIN rail mounting |
|---------------|-------------------|

Mechanical tests

Insertion and withdrawal forces

| | |
|-------------------------------------|-------------|
| Result | Test passed |
| No. of cycles | 25 |
| Insertion strength per pos. approx. | 2.76 N |
| Withdraw strength per pos. approx. | 2.28 N |

Visual inspection

| | |
|---------------|-----------------------|
| Specification | IEC 60512-1-1:2002-02 |
| Result | Test passed |

Dimension check

| | |
|---------------|-----------------------|
| Specification | IEC 60512-1-2:2002-02 |
| Result | Test passed |

Environmental and real-life conditions

Vibration test

| | |
|------------------------|-----------------------------------|
| Specification | IEC 60068-2-6:2007-12 |
| Frequency | 10 - 150 - 10 Hz |
| Sweep speed | 1 octave/min |
| Amplitude | 0.35 mm (10 Hz ... 60.1 Hz) |
| Acceleration | 5g (60.1 Hz ... 150 Hz) |
| Test duration per axis | 2.5 h |
| Test directions | X-, Y- and Z-axis (pos. and neg.) |

Durability test

| | |
|--|-----------------------|
| Specification | IEC 60512-9-1:2010-03 |
| Impulse withstand voltage at sea level | 1.75 kV |
| Contact resistance R_1 | 3.91 mΩ |
| Contact resistance R_2 | 4.51 mΩ |
| Insertion/withdrawal cycles | 25 |

Climatic test

| | |
|-----------------------------------|---|
| Specification | DIN 50018:2013-05 |
| Corrosive stress | 0.2 dm ³ SO ₂ on 300 dm ³ /40 °C/1 cycle |
| Thermal stress | 105 °C/168 h |
| Power-frequency withstand voltage | 0.84 kV |

Shocks

| | |
|-----------------|-----------------------------------|
| Specification | IEC 60068-2-27:2008-02 |
| Pulse shape | Semi-sinusoidal |
| Acceleration | 30g |
| Shock duration | 18 ms |
| Test directions | X-, Y- and Z-axis (pos. and neg.) |

TBUS8-20-BRIDGE-7035 - DIN rail bus connector



1387011

<https://www.phoenixcontact.com/us/products/1387011>

Ambient conditions

| | |
|---|---|
| Ambient temperature (operation) | -40 °C ... 105 °C (dependent on the derating curve) |
| Ambient temperature (storage/transport) | -40 °C ... 55 °C |
| Relative humidity (storage/transport) | 30 % ... 70 % |
| Ambient temperature (assembly) | -5 °C ... 100 °C |

Electrical tests

Air clearances and creepage distances |

| | |
|--|---------------------|
| Specification | IEC 60664-1:2007-04 |
| Insulating material group | I |
| Comparative tracking index (IEC 60112) | CTI 600 |
| Rated insulation voltage (III/3) | 32 V |
| Rated surge voltage (III/3) | 1.5 kV |
| minimum clearance value - non-homogenous field (III/3) | 0.8 mm |
| minimum creepage distance (III/3) | 1.3 mm |
| Rated insulation voltage (III/2) | 32 V |
| Rated surge voltage (III/2) | 1.5 kV |
| minimum clearance value - non-homogenous field (III/2) | 0.5 mm |
| minimum creepage distance (III/2) | 0.53 mm |
| Rated insulation voltage (II/2) | 32 V |
| Rated surge voltage (II/2) | 1.5 kV |
| minimum clearance value - non-homogenous field (II/2) | 0.5 mm |
| minimum creepage distance (II/2) | 0.53 mm |

Packaging specifications

| | |
|----------------------|---------------------|
| Type of packaging | packed in cardboard |
| Outer packaging type | Carton |

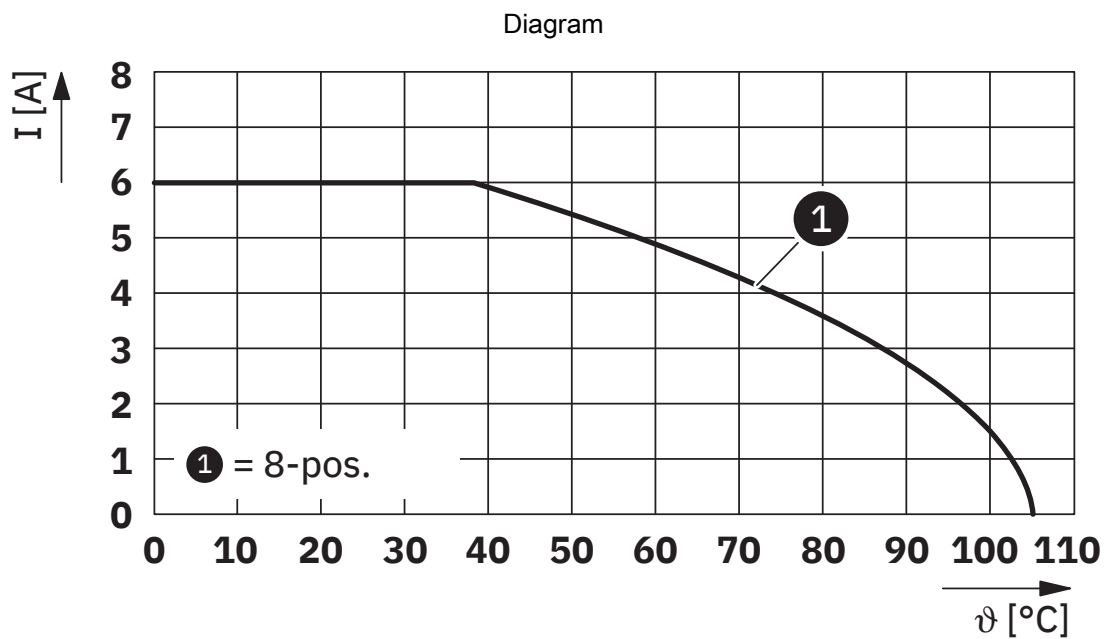
TBUS8-20-BRIDGE-7035 - DIN rail bus connector



1387011

<https://www.phoenixcontact.com/us/products/1387011>

Drawings



Type: TBUS8-...-BRIDGE

TBUS8-20-BRIDGE-7035 - DIN rail bus connector



1387011

<https://www.phoenixcontact.com/us/products/1387011>

Classifications

ECLASS

| | |
|-------------|----------|
| ECLASS-13.0 | 27460201 |
| ECLASS-15.0 | 27460201 |

ETIM

| | |
|----------|----------|
| ETIM 9.0 | EC002637 |
|----------|----------|

TBUS8-20-BRIDGE-7035 - DIN rail bus connector



1387011

<https://www.phoenixcontact.com/us/products/1387011>

Environmental product compliance

| | |
|---|--|
| EU RoHS | |
| Fulfills EU RoHS substance requirements | Yes, No exemptions |
| China RoHS | |
| Environment friendly use period (EFUP) | EFUP-E |
| | No hazardous substances above the limits |
| EU REACH SVHC | |
| REACH candidate substance (CAS No.) | No substance above 0.1 wt% |

TBUS8-20-BRIDGE-7035 - DIN rail bus connector



1387011

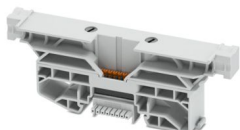
<https://www.phoenixcontact.com/us/products/1387011>

Accessories

TBUS8-TAP-KIT-7035 - DIN rail bus connector

1488806

<https://www.phoenixcontact.com/us/products/1488806>

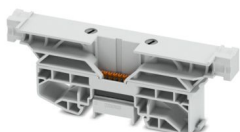


DIN rail bus connector, nominal cross section: 0.5 mm², color: light gray, nominal current: 6 A (parallel contacts), rated voltage (III/2): 32 V, contact surface: Au, contact connection type: Socket, number of potentials: 8, number of positions: 8, number of connections: 8, product range: TBUS8..2,54, pitch: 2.54 mm, connection method: Push-in spring connection, mounting: DIN rail mounting, conductor/PCB connection direction: 0 °, locking: Snap-in locking, mounting method: without, type of packaging: packed in cardboard, Integrated end bracket function

TBUS8-SPL-KIT-7035 - DIN rail bus connector

1488805

<https://www.phoenixcontact.com/us/products/1488805>



DIN rail bus connector, nominal cross section: 0.5 mm², color: light gray, nominal current: 6 A (parallel contacts), rated voltage (III/2): 32 V, contact surface: Au, contact connection type: Socket, number of potentials: 8, number of positions: 8, number of connections: 8, product range: TBUS8..2,54, pitch: 2.54 mm, connection method: Push-in spring connection, mounting: DIN rail mounting, conductor/PCB connection direction: 0 °, locking: Snap-in locking, mounting method: without, type of packaging: packed in cardboard, Integrated end bracket function

TBUS8-20-BRIDGE-7035 - DIN rail bus connector



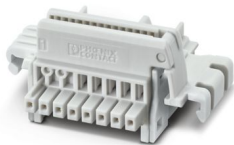
1387011

<https://www.phoenixcontact.com/us/products/1387011>

TBUS8-20,0-PPPPPPPP-7035 - DIN rail bus connector

2202889

<https://www.phoenixcontact.com/us/products/2202889>



DIN rail bus connector, color: light gray, nominal current: 6 A (parallel contacts), rated voltage (III/2): 32 V, number of positions: 8, product range: TBUS8-20..., pitch: 2.54 mm, mounting: DIN rail mounting, locking: without, mounting method: without, type of packaging: packed in cardboard, Item with gold-plated contacts, bus connectors for connecting with electronics housings, 8 parallel contacts

TBUS8-20,0-PPPPPPSS-7035 - DIN rail bus connector

2202892

<https://www.phoenixcontact.com/us/products/2202892>



DIN rail bus connector, color: light gray, nominal current: 6 A, 4 A (parallel contacts) (Serial contacts), rated voltage (III/2): 32 V, number of positions: 8, product range: TBUS8-20..., pitch: 2.54 mm, mounting: DIN rail mounting, locking: without, mounting method: without, type of packaging: packed in cardboard, Item with gold-plated contacts, bus connectors for connecting with electronics housings, 6 parallel contacts/2 serial contacts

TBUS8-20-BRIDGE-7035 - DIN rail bus connector

1387011

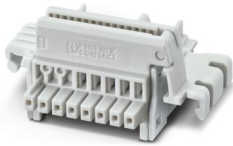
<https://www.phoenixcontact.com/us/products/1387011>



TBUS8-20,0-PPPPPPPS-7035 - DIN rail bus connector

2202894

<https://www.phoenixcontact.com/us/products/2202894>



DIN rail bus connector, color: light gray, nominal current: 6 A, 4 A (parallel contacts) (Serial contacts), rated voltage (III/2): 32 V, number of positions: 8, product range: TBUS8-20..., pitch: 2.54 mm, mounting: DIN rail mounting, locking: without, mounting method: without, type of packaging: packed in cardboard, Item with gold-plated contacts, bus connectors for connecting with electronics housings, 7 parallel contacts/1 serial contact

NS 35/ 7,5 UNPERF 2000MM - DIN rail, unperforated

0801681

<https://www.phoenixcontact.com/us/products/0801681>



DIN rail, unperforated, Pack of 25 (50 m), acc. to EN 60715, material: Steel, galvanized, passivated with a thick layer, Standard profile, color: silver-colored

TBUS8-20-BRIDGE-7035 - DIN rail bus connector



1387011

<https://www.phoenixcontact.com/us/products/1387011>

SZS 0,6X3,5 VDE - Screwdriver

1212602

<https://www.phoenixcontact.com/us/products/1212602>



Screwdriver, slot-headed, VDE insulated, size: 0.6 x 3.5 x 100 mm, 2-component grip, with non-slip grip

Phoenix Contact 2025 © - all rights reserved

<https://www.phoenixcontact.com>

Phoenix Contact USA
586 Fulling Mill Road
Middletown, PA 17057, United States
(+717) 944-1300
info@phoenixcon.com