

Application Note

Flush-Mount, Miniature Foil Pressure Sensors, Models A105, A205, and S in Industrial OEM Sprayers

Background

The use of industrial automated sprayers is a more advanced and efficient way to apply sealants, coatings, paints, and other media. Automated sprayers consistently produce a more uniform and higher quality coating, as compared to manual sprayers.

Industrial manufacturers of paints, coatings, sealants, adhesives, or lubricant dispensing equipment require continuous and accurate pressure feedback to insure proper and uniform dispensing is being applied to the product. Certain changes in pressure, during this process, can indicate a non-uniform dispensing of the media; such as formation of air pockets or blockage, which can trigger a timely process change or adjustment to the system.

Solutions

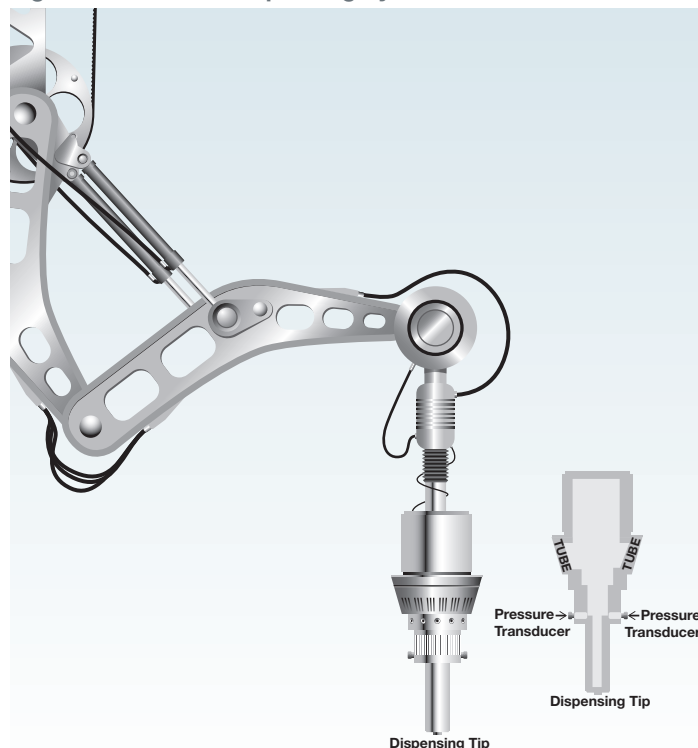
Quality assurance is a key requirement driving this need.

Honeywell's flush-mount, miniature foil pressure sensors utilize real-time pressure sensing to ensure product is being properly dispensed from the equipment through highly reliable and quality performance.

With their all-welded stainless steel construction, Models S, A-105, and A-205 pressure transducers can handle a wide temperature range to fill many applications. These transducers are fully temperature compensated to offer stability under varying temperature conditions. In addition, they feature non-clogging and ease of cleaning capabilities. Easily and quickly customized, Models S, A-105, A-205 may be modified with customer specified threads, connectors, and cables for use in specific spraying applications.

Model S subminiature pressure sensors accurately measure pressure ranges from 100 psi to 15000 psi. These bonded foil strain gage transducers have a high natural frequency and utilize a flush diaphragm. All transducers have four (4) active bonded strain gages arranged in a Wheatstone-bridge configuration.

Figure 1. Industrial Dispensing System



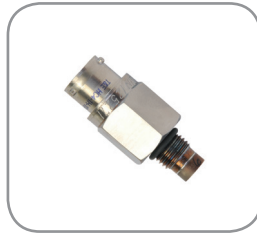
Application Note

Flush-Mount, Miniature Foil Pressure Sensors

Model A-105, A-205

Features and Benefits

- 100 psig to 15000 psig range (Model A-105)
- 100 psig to 10000 psig range (Model A-205)
- Flush mount design
- 1/4-18 NPT mounting thread (Model A-205)
- No dead volume (Model A-105)
- Miniature footprint
- Stainless steel
- CE approved



Model S

Features and Benefits

- 100 psi to 15000 psi range
- Flush mount design
- No internal dead volume
- High frequency
- mV/V output
- 1 % accuracy
- CE approved



Find Out More

To learn more about Honeywell sensors and switches, contact a Honeywell representative today at **1-800-537-6945**, e-mail **info.tm@honeywell.com**, or visit **measurementsensors.honeywell.com**

Warranty. Honeywell warrants goods of its manufacture as being free of defective materials and faulty workmanship. Honeywell's standard product warranty applies unless agreed to otherwise by Honeywell in writing; please refer to your order acknowledgement or consult your local sales office for specific warranty details. If warranted goods are returned to Honeywell during the period of coverage, Honeywell will repair or replace, at its option, without charge those items it finds defective. **The foregoing is buyer's sole remedy and is in lieu of all warranties, expressed or implied, including those of merchantability and fitness for a particular purpose. In no event shall Honeywell be liable for consequential, special, or indirect damages.**

While we provide application assistance personally, through our literature and the Honeywell web site, it is up to the customer to determine the suitability of the product in the application.

Specifications may change without notice. The information we supply is believed to be accurate and reliable as of this printing. However, we assume no responsibility for its use.

Honeywell Sensing and Productivity Solutions

9680 Old Bailes Road
Fort Mill, SC 29707
honeywell.com

008920-1-EN IL50 GLO
May 2016
Copyright © 2016 Honeywell International Inc. All rights reserved.

Honeywell