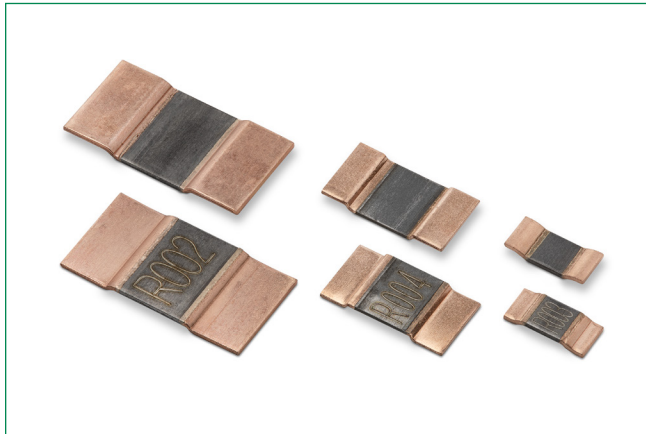


Two Terminal, Metal Type Current Shunt Resistor

SSA Series



Description

Littelfuse SSA Series is a two-terminal, ultra-low resistance shunt resistors are of superior quality and are best suited for applications including power hybrid applications, frequency converters, power modules, and communication systems.

Features

- English case sizes 2512, 3921, and 5931
- Resistance from 0.2 mΩ~4 mΩ
- Power up to 15 W
- Tolerance down to ±1.0%
- TCR down to ±50 ppm/°C

Benefits

- Small size
- High voltage

Application

- Power Hybrid Application
- Frequency Converter
- Power Module
- Communication System

Additional Information



Resources



Accessories



Samples

Electrical Specifications

Part Number	Size		Resistance Value		Power	TCR (ppm/°C)	Standard Package Qty
	inch	mm	Ro (mΩ)	Rt (%)	(W)		
SSA2512L0M20FYR	2512	6432	0.2	±1.0%	6	±200	4000
SSA2512L0M25FYR	2512	6432	0.25	±1.0%	5	±200	4000
SSA2512L0M30FYR	2512	6432	0.3	±1.0%	5	±200	4000
SSA2512L0M50FWR	2512	6432	0.5	±1.0%	10	±150	3000
SSA2512LR001FWR	2512	6432	1	±1.0%	6	±150	3000
SSA2512LR002FWR	2512	6432	2	±1.0%	6	±50	3000
SSA2512LR003FWR	2512	6432	3	±1.0%	4	±50	3000
SSA2512LR004FWR	2512	6432	4	±1.0%	4	±50	3000
SSA2512L0M20JYR	2512	6432	0.2	±5.0%	6	±200	4000
SSA2512L0M25JYR	2512	6432	0.25	±5.0%	5	±200	4000
SSA2512L0M30JYR	2512	6432	0.3	±5.0%	5	±200	4000
SSA2512L0M50JWR	2512	6432	0.5	±5.0%	10	±150	3000
SSA2512LR001JWR	2512	6432	1	±5.0%	6	±150	3000
SSA2512LR002JWR	2512	6432	2	±5.0%	6	±50	3000
SSA2512LR003JWR	2512	6432	3	±5.0%	4	±50	3000
SSA2512LR004JWR	2512	6432	4	±5.0%	4	±50	3000
SSA3921L0M20FWR	3921	50110	0.2	±1.0%	9	±150	3000
SSA3921L0M30FWR	3921	50110	0.3	±1.0%	10	±150	3000
SSA3921L0M50FWR	3921	50110	0.5	±1.0%	9	±70	3000
SSA3921L0M75FWR	3921	50110	0.75	±1.0%	7	±150	3000
SSA3921LR001FWR	3921	50110	1	±1.0%	9	±50	3000
SSA3921LR002FWR	3921	50110	2	±1.0%	6	±50	3000

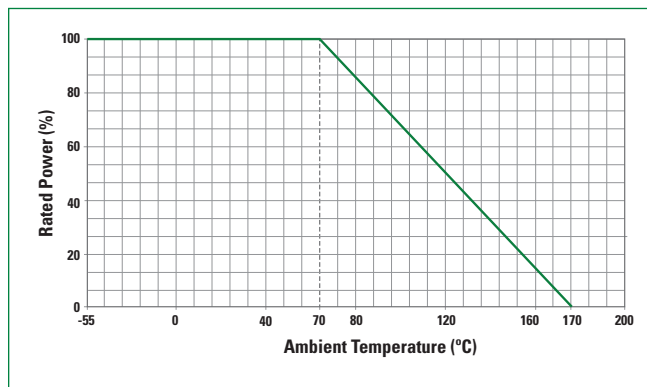
Two Terminal, Metal Type Current Shunt Resistor

SSA Series

Electrical Specifications

Part Number	Size		Resistance Value		Power (W)	TCR (ppm/°C)	Standard Package Qty
	inch	mm	Ro (mΩ)	Rt (%)			
SSA3921LR003FWR	3921	50110	3	±1.0%	6	±50	3000
SSA3921LR004FWR	3921	50110	4	±1.0%	5	±50	3000
SSA3921L0M20JWR	3921	50110	0.2	±5.0%	9	±150	3000
SSA3921L0M30JWR	3921	50110	0.3	±5.0%	10	±150	3000
SSA3921L0M50JWR	3921	50110	0.5	±5.0%	9	±70	3000
SSA3921L0M75JWR	3921	50110	0.75	±5.0%	7	±150	3000
SSA3921LR001JWR	3921	50110	1	±5.0%	9	±50	3000
SSA3921LR002JWR	3921	50110	2	±5.0%	6	±50	3000
SSA3921LR003JWR	3921	50110	3	±5.0%	6	±50	3000
SSA5931L0M20FDR	5931	75150	0.2	±1.0%	15	±175	1500
SSA5931L0M30FDR	5931	75150	0.3	±1.0%	10	±175	1500
SSA5931L0M50FDR	5931	75150	0.5	±1.0%	10	±100	1500
SSA5931L0M70FDR	5931	75150	0.7	±1.0%	7	±100	1500
SSA5931L0M75FDR	5931	75150	0.75	±1.0%	10	±100	1500
SSA5931LR001FDR	5931	75150	1	±1.0%	10	±50	1500
SSA5931LR002FDR	5931	75150	2	±1.0%	8	±50	1500
SSA5931LR003FDR	5931	75150	3	±1.0%	7	±50	1500
SSA5931L0M20JDR	5931	75150	0.2	±5.0%	15	±175	1500
SSA5931L0M30JDR	5931	75150	0.3	±5.0%	10	±175	1500
SSA5931L0M50JDR	5931	75150	0.5	±5.0%	10	±100	1500
SSA5931L0M70JDR	5931	75150	0.7	±5.0%	7	±100	1500
SSA5931L0M75JDR	5931	75150	0.75	±5.0%	10	±100	1500
SSA5931LR001JDR	5931	75150	1	±5.0%	10	±50	1500
SSA5931LR002JDR	5931	75150	2	±5.0%	8	±50	1500
SSA5931LR003JDR	5931	75150	3	±5.0%	7	±50	1500

Temperature De-rating Curve



Storage / Environment Conditions

Products should be stored under the following environmental conditions.

Temperature: +5 to +35 °C

Humidity: 45 to 85% relative humidity

Moisture Sensitivity Level 1, J-STD-020

Do not keep products in environments where they may be subject to particulate contamination or harmful gases such as sulfuric acid or hydrogen chloride as it may cause oxidation on electrodes, resulting poor solderability.

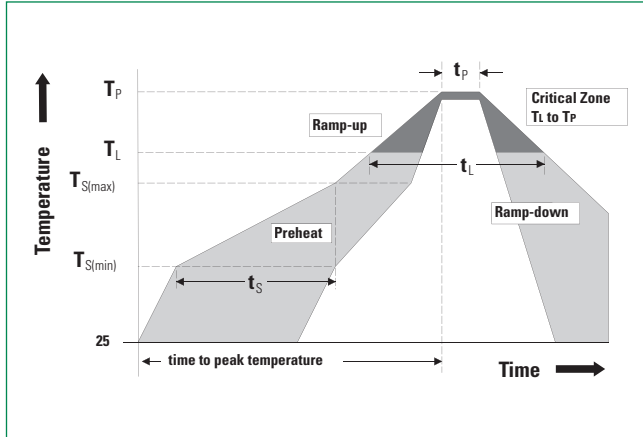
Products should be stored in a space that does not expose to high temperatures, vibration, or direct sunlight.

Products should be stored in the original airtight packaging until use.

Two Terminal, Metal Type Current Shunt Resistor

SSA Series

Soldering Parameters–Wave Soldering



Profile Feature	Pb-Free Assembly
Average Ramp-Up Rate (Ts_{max} to Tp)	3 °C / second max
Preheat	
Temperature Minimum (Ts _{min})	150 °C
Temperature Maximum (Ts _{max})	200 °C
Time (Ts _{min} to (Ts _{max}))	60–180 seconds
Time maintained above	
Temperature Minimum (T _L)	217 °C
Time (t _L)	60–150 seconds
Peak Temperature (Tp)	260 +0 °C
Time within 5 °C of Actual Peak Temperature (tp)	20–40 seconds
Ramp-Down Rate	6 °C / second Maximum
Time 25 °C to Peak Temperature	8 minutes Maximum

Reliability Specifications

Test	Procedure	Specifications
Resistance Data	Resistance data at 25 °C	Must meet datasheet requirements
TCR Data	Tested at 25 °C and 125 °C TCR = (R _b -R _a) / R _a × 1 / (T _b -T _a) × 10 ⁶	Must meet datasheet requirements
Dimensional Data	Measure all dimensions specified in datasheet	Must meet datasheet requirements
Short Time Overload JIS-C-5201, 4.13	Applied voltage: 2.5X rated voltage. Test duration: 5 seconds	±1.0%
Operational Life MIL-STD-202, Method 108	Condition D Steady State T _A =125 °C at rated power Test period: 1,000 hours	±1.0%
Biased Humidity MIL-STD-202, Method 103	Test Condition: 85 °C / 85% RH 10% of operating power Test period: 1,000 hours	±1.0%
Temperature Cycle (Thermal Shock) JESD22-A-104	Repeat 1,000 cycles as follows: -55 °C (30 min.) / +155 °C (30 min.) Transition time of 1 minute maximum	±1.0%
Resistance To Solder Heat J-STD-020	One reflow cycle according to JEDEC J-STD-020, cool down then parts are immersed into a molten solder bath with a temperature of 260 °C for a period of 10 ±1 seconds	Part must meet initial specifications following testing
High Temperature Exposure MIL-STD-202, Method 108, Condition D	Test Temperature: Maximum rated operational temperature Test period: 1,000 hours No electrical load	±1.0%
Vibration MIL-STD-202, Method 204, Condition B	Frequency: 10–2,000 Hz Acceleration: 15G Test Duration: 20 mins / 12 Cycles	±1.0%
Mechanical Shock IEC60115-1, 4.21	Force: 100G Test Duration: 6 ms	±1.0%
Solderability MIL-STD-202, Method 208H, Category 3	Dipped into molten solder for 3 ±1 seconds at 245 °C Flux activity type R0	New solder coverage of 90% minimum

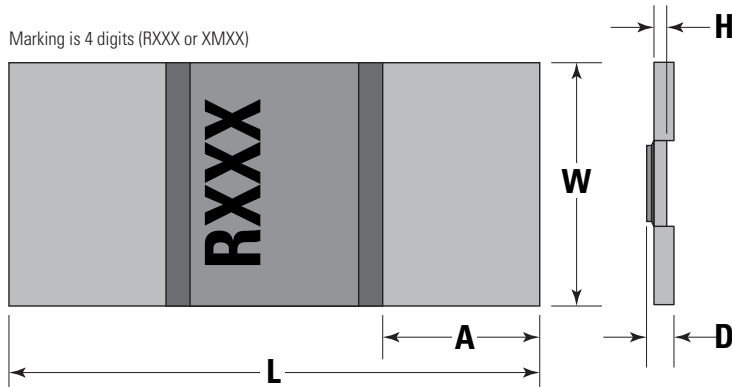
Two Terminal, Metal Type Current Shunt Resistor

SSA Series

Dimensions

All dimensions in mm

Marking is 4 digits (RXXX or XMXX)

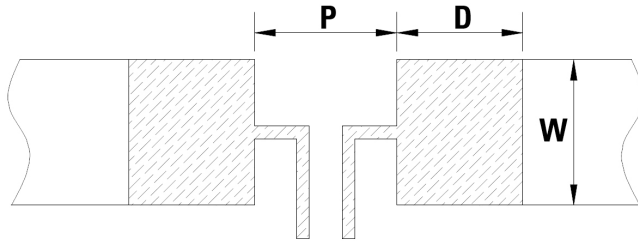


Part Number	Resistance Value	W	L	H	A	D
SSA2512	0.2mΩ	3.02 ±0.25	6.35 ±0.20	0.35 ±0.05	1.00 ±0.30	1.40
	0.25mΩ					1.06
	0.3mΩ					1.40
	0.5mΩ					0.85
	1mΩ					0.44
	2mΩ					0.67
	3mΩ					0.42
	4mΩ					0.33
SSA3921	0.2mΩ	5.20 ±0.30	10.0 ±0.30	0.50 ±0.10	2.00 ±0.30	1.40
	0.3mΩ					1.28
	0.5mΩ					0.83
	0.75mΩ					0.56
	1mΩ					0.42
	2mΩ					0.58
	3mΩ					0.38
	4mΩ					0.28
SSA5931	0.2mΩ	7.75 ±0.30	15.0 ±0.30	0.50 ±0.10	4.00 ±0.30	1.35
	0.3mΩ					1.13
	0.5mΩ					0.62
	0.7mΩ					0.43
	0.75mΩ					0.38
	1mΩ					1.07
	2mΩ					0.49
	3mΩ					0.34

Two Terminal, Metal Type Current Shunt Resistor

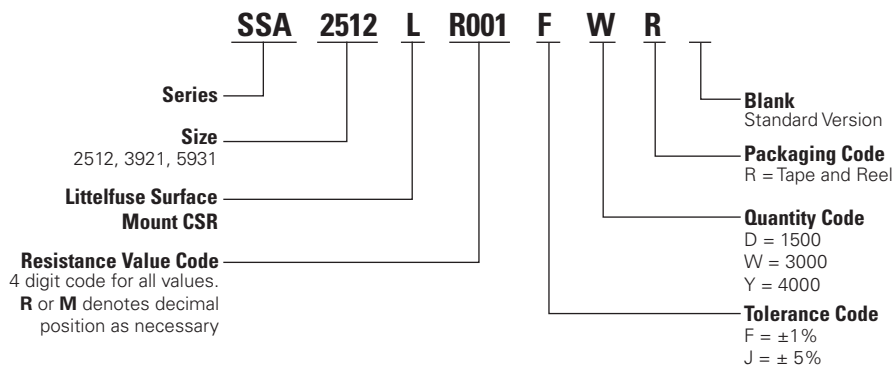
SSA Series

Recommended Land Pattern



Part Number	Resistance	P	D	W
SSA2512	0.2 mΩ	1.60 mm	3.85 mm	3.85 mm
	0.25 mΩ~4 mΩ	3.60 mm	3.40 mm	1.60 mm
SSA3921	0.2 mΩ~4 mΩ	5.60 mm	6.20 mm	2.70 mm
SSA5931	0.2 mΩ~3 mΩ	5.60 mm	8.75 mm	5.20 mm

Part Numbering System



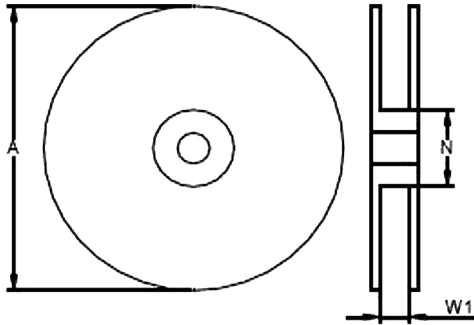
Packaging

Part Number	Resistance Value (Ω)	Halogen Free	Packaging Option	Quantity	Quantity & Packaging Codes
SSA2512	0.2 mΩ~0.3 mΩ	Yes	Tape and Reel	4000	YR
	0.5 mΩ~4 mΩ	Yes	Tape and Reel	3000	WR
SSA3921	0.2 mΩ~4 mΩ	Yes	Tape and Reel	3000	WR
SSA5931	0.2 mΩ~3 mΩ	Yes	Tape and Reel	1500	DR

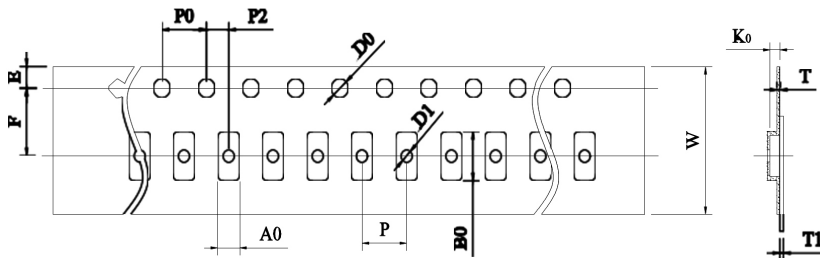
Two Terminal, Metal Type Current Shunt Resistor

SSA Series

Tape and Reel Specifications



Size	Resistance Value (Ω)	A \pm 5 (mm)	N \pm 2 (mm)	W1 \pm 1 (mm)
2512	0.2 m Ω ~0.3 m Ω	330	60	17.0
	0.5 m Ω ~4.0 m Ω	178	60	13.0
3921	0.2 m Ω ~4.0 m Ω	330	100	24.5
5931	0.2 m Ω ~3.0 m Ω	330	100	24.5



Size	Resistance (Ω)	W	P0	P	P2	A0	B0	D0	F	E	T	T1	K0
2512	0.2m Ω ~0.3m Ω	16.00 \pm 0.30	4.00 \pm 0.10	8.00 \pm 0.10	2.00 \pm 0.10	3.50 \pm 0.20	6.80 \pm 0.20	1.55 \pm 0.10	7.50 \pm 0.10	1.75 \pm 0.10	0.20 \pm 0.10	Max 0.10	2.00 \pm 0.20
	0.5m Ω , 2m Ω	12.00 \pm 0.30	4.00 \pm 0.10	4.00 \pm 0.10	2.00 \pm 0.10	3.40 \pm 0.20	6.75 \pm 0.20	1.55 \pm 0.10	5.50 \pm 0.10	1.75 \pm 0.10	0.20 \pm 0.10	Max 0.10	1.50 \pm 0.20
	1m Ω , 3m Ω , 4m Ω	12.00 \pm 0.30	4.00 \pm 0.10	4.00 \pm 0.10	2.00 \pm 0.10	3.40 \pm 0.20	6.75 \pm 0.20	1.55 \pm 0.10	5.50 \pm 0.10	1.75 \pm 0.10	0.20 \pm 0.10	Max 0.10	0.98 \pm 0.20
3921	0.2m Ω ~0.3m Ω	24.00 \pm 0.30	4.00 \pm 0.10	8.00 \pm 0.10	2.00 \pm 0.10	5.70 \pm 0.20	11.50 \pm 0.20	1.55 \pm 0.10	11.50 \pm 0.10	1.75 \pm 0.10	0.30 \pm 0.10	Max 0.10	2.10 \pm 0.10
	0.5m Ω ~4m Ω	24.00 \pm 0.30	4.00 \pm 0.10	8.00 \pm 0.10	2.00 \pm 0.10	5.70 \pm 0.20	11.50 \pm 0.20	1.55 \pm 0.10	11.50 \pm 0.10	1.75 \pm 0.10	0.30 \pm 0.10	Max 0.10	1.50 \pm 0.10
5931	0.2m Ω ~0.3m Ω , 1m Ω	24.00 \pm 0.30	4.00 \pm 0.10	12.00 \pm 0.10	2.00 \pm 0.10	8.25 \pm 0.20	15.50 \pm 0.20	1.55 \pm 0.10	11.50 \pm 0.10	1.75 \pm 0.10	0.30 \pm 0.10	Max 0.10	2.10 \pm 0.10
	0.5m Ω ~0.75m Ω , 2m Ω ~3m Ω	24.00 \pm 0.30	4.00 \pm 0.10	12.00 \pm 0.10	2.00 \pm 0.10	8.25 \pm 0.20	15.50 \pm 0.20	1.55 \pm 0.10	11.50 \pm 0.10	1.75 \pm 0.10	0.30 \pm 0.10	Max 0.10	1.50 \pm 0.10

Note: Tape and reel packaging in accordance to EIA-481

Disclaimer Notice - Information furnished is believed to be accurate and reliable. However, users should independently evaluate the suitability of and test each product selected for their own applications. Littelfuse products are not designed for, and may not be used in, all applications. Read complete Disclaimer Notice at <http://www.littelfuse.com/disclaimer-electronics>.