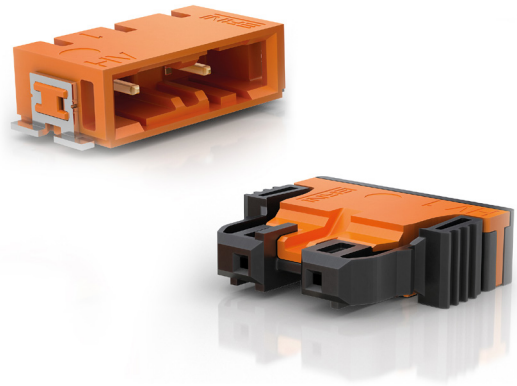


INTRODUCING

ERNI VOLTRON 1000V CONNECTOR

- Increased voltage in battery architecture
- Reduced connector height provides more freedom for design of compact BMS



TE Connectivity's (TE) ERNI VolTron 1000V high voltage sensing connector is specifically designed to use in the Battery Management System (BMS) and Battery Disconnect Units (BDU) to measure voltage across the battery architecture and ecosystem.

The connector's multiple design features, high CTI materials and contact surfaces maximize creep and clearance.

This results in high performance value of up to 1000V, strong dielectric strength and capability to use above 5000M sea level, with pollution degree 2 according to IEC 60664-1. The connector complies to LV214, LV215 and USCAR automotive standards.

BENEFITS

- Increased voltage in battery architecture
- Reduced connector height provides more freedom for design of compact BMS
- Suitable to use in harsh environments and automotive standards

FEATURES

- Up to 1000V signal measurement capability
- Miniaturization grade with low profile
- CTI 600 materials and Au terminal contact surface
- 5000M altitude compensation

APPLICATIONS

- Battery Management System (BMS); Battery Disconnect Unit (BDU)
- Integrated power electronics
- In broad range of applications where high voltage needs to be measured on a constant basis

ELECTRICAL

- Up to 1000V operating voltage
- Dielectric strength 2.500V (LV215) / 3.700V
- Terminal rated up to 6A (0.35mm²)
- 500 mating cycles

MECHANICAL

- Vibration severity SG2 (LV214)
- SMT termination
- MaxiBridge crimp contact (LV214 and SMBT approved)
- Primary and secondary locking
- 2 Color and mechanical codings

MATERIAL

- CTI 600 resins
- UL 94 V-0 flammability resistance
- Gold surface contacts
- -55°C up to 150°C temperature range

STANDARDS

- LV214
- LV215 (VW80332)
- USCAR 37

SPECIFICATIONS

- [108-94917](#) product specification
- [108-94917-1](#) product specification
- [114-94917](#) application specification

LEARN MORE

- [ERNI VolTron 1000V connector flyer](#)
- [ERNI VolTron 1000V connector partlist](#)
- [ERNI VolTron 1000V connector product page](#)
- [ERNI VolTron 1000V connector images](#)