

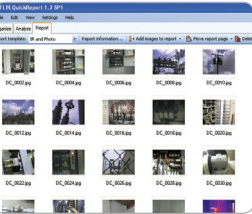
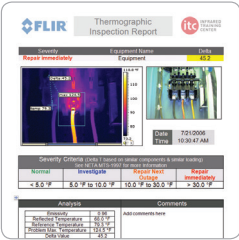


| Specifications | Compact | Point & Shoot | | | | Professional | | | High-Performance | | | | |
|---------------------|---------------------------------|--------------------------------|--|--|--|--|--|---|--|--|--|---|---|
| Model | C2 | E4 | E5 | E6 | E8 | E40 | E50 | E60 | T420 | T440 | T620 | T640 | T1020 |
| | | | | | | | | | | | | | |
| IR Pixel Resolution | 4,800 (80 × 60) | 4,800 (80 × 60) | 10,800 (120 × 90) | 19,200 (160 × 120) | 76,800 (320 × 240) | 19,200 (160 × 120) | 43,200 (240 × 180) | 76,800 (320 × 240) | 76,800 (320 × 240) | | 307,200 (640 × 480) | | 786,432 (1024 x 768) |
| Thermal Sensitivity | <0.10°C | <0.15°C | <0.10°C | <0.06°C | <0.06°C | <0.07°C /<0.045°C | <0.05°C /<0.045°C | | <0.045°C | | <0.04°C | <0.035°C | <0.02°C |
| Temperature Range | 10°C to +150°C (14 to 302°F) | −4° F to 482°F (−20° to 250°C) | | | | −4°F to 1,202°F (-20°C to 650°C) | | | −4°F to 1,202°F (−20°C to 650°C) Optional to 2,192°F (1,200°C) | −4°F to 2,192°F (−20°C to 1,200°C) | −40°F to 1,202°F (−40°C to 650°C) Optional: to 3,632°F (2,000°C) | −40°F to 3,632°F (−40°C to 2,000°C) | −−40° to +2000°C |
| Field of View | 41° × 31° | 45° × 34° | | | | 25° × 19° | | | 25° × 19° | | | | 28° × 21° |
| Special Features | Pocket Sized, Touchscreen | Center Spot | Center Spot, Area Box (Min/ Max) | Center Spot, Area Box (Min/ Max), Isotherm | Center Spot, Area Box (Min/ Max), Isotherm | WiFi, Bluetooth, Touchscreen, 2X Zoom, Fixed PiP | WiFi, Bluetooth, Touchscreen, 4X Zoom, Scalable PiP | WiFi, Bluetooth, Touchscreen, 4X Zoom, Scalable PiP, Dual Charger and Spare Battery | Superior Ergonomics, WiFi, Bluetooth, Touchscreen, Manual and Automatic Focus | Superior Ergonomics, WiFi, Bluetooth, Touchscreen, High Temperature Range | Superior Ergonomics, WiFi, Bluetooth, Touchscreen, Manual and Automatic Focus | Color Viewfinder, Highest Temp Range, WiFi, Bluetooth, Touchscreen, Manua, Automatic and Continuos Focus | Highest Resolution, Color Viewfinder, Advanced OSX Optics, Exceptional Sensitivity |

FLIR Tools+

Extra Ground breaking Reporting Power for Busy Professional Thermographers

Along with all of our standard FLIR Tools software features, new FLIR Tools+ provides an expanded set of cutting-edge controls for generating more comprehensive thermal imaging inspection and research reports. Record and playback thermal video and temporal plots. Build a panoramic thermal image. Quickly create reports. And provide advanced analysis data and more detailed thermal imagery in impressive PDF documents that show anomalies, trends, and results with greater precision.



| | |
|-------------|----------|
| FLIR Part # | 41112210 |
|-------------|----------|

The Infrared Training Center

Offers classes for practically every application, from free online courses to advanced training that can certify you as a thermography expert

FREE Online Courses
User-friendly, on-demand courses designed to show you how to use your camera and get started on electrical surveys, energy audits and more

Thermography Certification Training
Level I certifies that you know how a thermal imager works and how to use it. Level II cranks your credibility up a notch with more in-depth concepts and intensive labs

Popular ITC courses: Indoor Electrical Surveys using IR Thermography, Outdoor Electrical Surveys using IR Thermography, Building Inspection, Condition Monitoring



| | |
|-------------|-------------|
| FLIR Part # | ITC LEVEL I |
|-------------|-------------|

FLIR Test & Measurement

Leveraging our 50 year history as the world's largest supplier of thermal imaging technology to military, government, and commercial customers, FLIR introduces a new line of test & measurement instruments built upon our commitment to innovation, quality, and reliability.



| FLIR Part # |
|-------------|
| DM93 |
| CM174 |
| MR176 |
| MR160 |
| TG54 |
| TG56 |
| VP50 |