









# WORKHOLDING



	STAINLESS STEEL TOGGLE CLAMPS .....	320 - 322
	VERTICAL TOGGLE CLAMPS.....	322 - 324
	HORIZONTAL TOGGLE CLAMPS .....	325 - 326
	PUSH PULL TOGGLE CLAMPS .....	327 - 328
	TOGGLE CLAMP ACCESSORIES .....	329
	TOGGLE CLAMP LATCHES .....	330
	TOGGLE CLAMP HOOKS .....	331
	TOGGLE CLAMP PLIERS.....	331



# STAINLESS STEEL TOGGLE CLAMPS

## SR5452 Series

### Toggle Clamp Vertical Stainless Steel

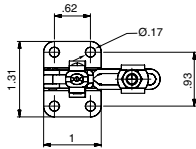
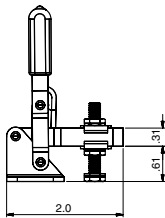
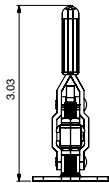
#### Specifications

- Material:  
Clamp: Stainless Steel  
Grip: PVC (Red)  
Spindle: Stainless Steel

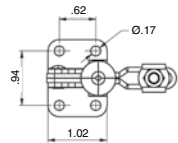
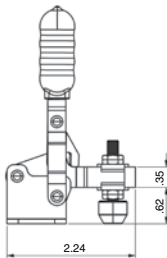
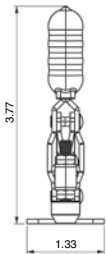


#### Features

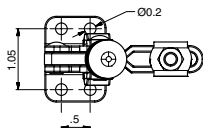
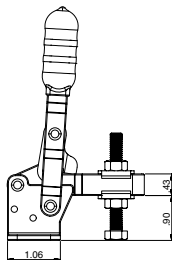
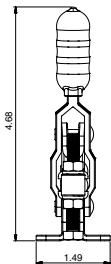
- Hand grip with cushioned rib profile for improved user comfort
- All body and linkage components on the clamps are manufactured from a high grade of stainless steel suitable for use within the food, pharmaceutical and chemical industries
- Pivot points are fitted with stainless steel rivets to maintain accuracy and provide a long service life



Item No.	Holding Force	Arm Opens	Handle Opens	Pack Qty.
493803	110 lbf.	100°	56°	1



Item No.	Holding Force	Arm Opens	Handle Opens	Pack Qty.
493804	110 lbf.	130° - 190°	90° - 125°	1



Item No.	Holding Force	Arm Opens	Handle Opens	Pack Qty.
493805	330 lbf.	95° - 185°	75° - 110°	1

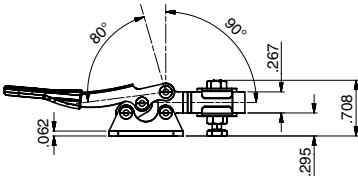
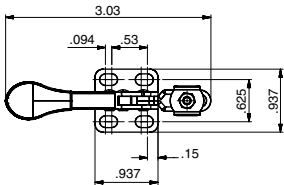
STAINLESS STEEL TOGGLE CLAMPS



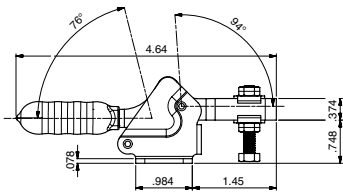
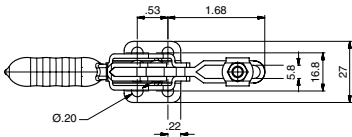
SR5453 Series  
Toggle Clamp Horizontal Stainless Steel

- Specifications
- Material:  
Clamp: Stainless Steel  
Grip: PVC (Red)  
Spindle: Stainless Steel

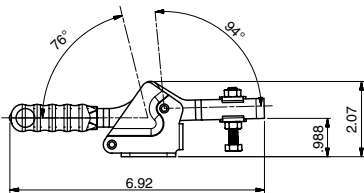
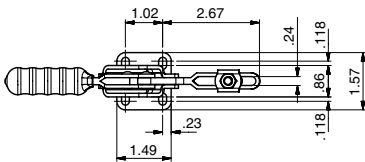
- Features
- Hand grip with cushioned rib profile for improved user comfort
  - All body and linkage components on the clamps are manufactured from, a high grade of stainless steel suitable for use within the food, pharmaceutical and chemical industries
  - Pivot points are fitted with stainless steel rivets to maintain accuracy and provide a long service life



Item No.	Holding Force	Arm Opens	Handle Opens	Pack Qty.
493806	83 lbf.	90°	80°	1



Item No.	Holding Force	Arm Opens	Handle Opens	Pack Qty.
493807	143 lbf.	94°	76°	1



Item No.	Holding Force	Arm Opens	Handle Opens	Pack Qty.
493808	198 lbf.	94°	76°	1



# STAINLESS STEEL TOGGLE CLAMPS



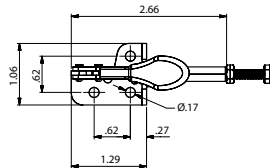
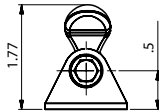
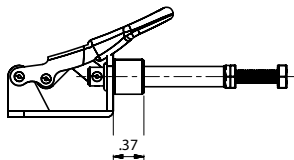
**SR5454 Series**  
**Toggle Clamp Push Pull Stainless Steel**

**Specifications**

- Material:  
Clamp: Stainless Steel  
Grip: PVC (Red)  
Spindle: Stainless Steel

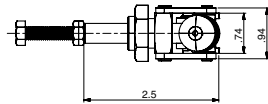
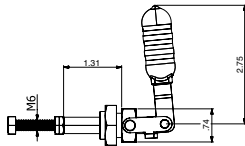
**Features**

- Hand grip with cushioned rib profile for improved user comfort
- All body and linkage components on the clamps are manufactured from a high grade of stainless steel suitable for use within the food, pharmaceutical and chemical industries
- Pivot points are fitted with stainless steel rivets to maintain accuracy and provide a long service life



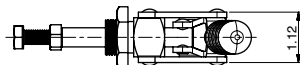
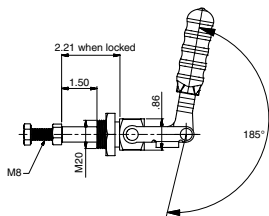
Item No.	Holding Force	Plunger Stroke	Handle Opens	Pack Qty.
493809	99 lbf.	.62	190°	1

Light duty with flat base



Item No.	Holding Force	Plunger Stroke	Handle Opens	Pack Qty.
493810	209 lbf.	.74	185°	1

Nose mounted with optional bracket



Item No.	Holding Force	Plunger Stroke	Handle Opens	Pack Qty.
493811	385 lbf.	1.49	185°	1



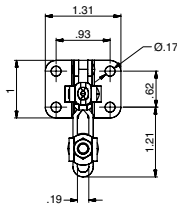
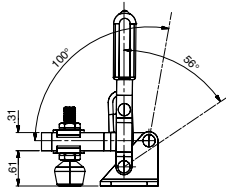
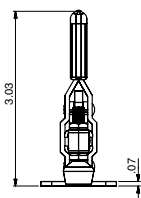
**SR5446 Series**  
**Toggle Clamp Vertical**

**Specifications**

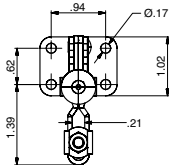
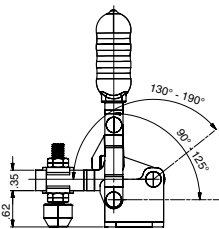
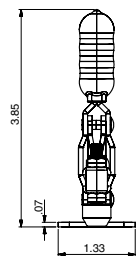
- Material:  
  Clamp: Zinc Plated Steel  
  Grip: PVC (Red)  
  Spindle: Steel / Neoprene

**Features**

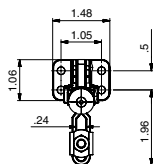
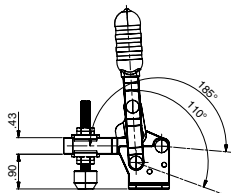
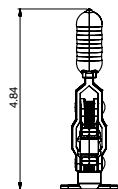
- Hand grip with cushioned rib profile for improved user comfort
- All body and linkage components are zinc plated to resist corrosion
- Pivot points are fitted with hardened steel or stainless steel rivets to maintain accuracy and provide a long service life
- Clamps with adjustable spindles are manufactured with a formed end to the arm, which captivates the spindle should it become loose during operation
- Flanged washers are supplied with all slotted arm versions
- The arm and handle opening angle can be increased on some models by the removal of a positioning pin on the base of the clamp



Item No.	Holding Force	Arm Opens	Handle Opens	Pack Qty.
493778	110 lbf.	100°	56°	1



Item No.	Holding Force	Arm Opens	Handle Opens	Pack Qty.
493779	156 lbf.	130° - 190°	90° - 125°	1



Item No.	Holding Force	Arm Opens	Handle Opens	Pack Qty.
493780	330 lbf.	185°	110°	1

(Continued on next page)



# VERTICAL TOGGLE CLAMPS

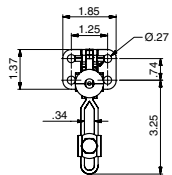
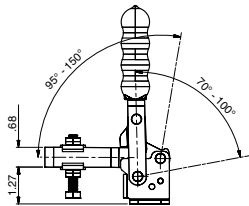
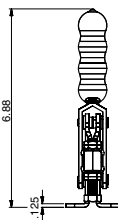
**SR5446 Series**  
**Toggle Clamp Vertical**

**Specifications**

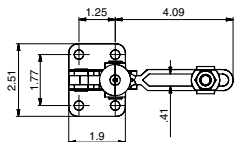
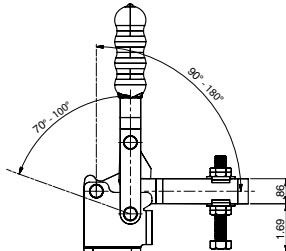
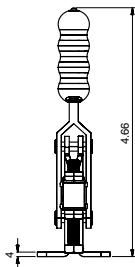
- Material:  
Clamp: Zinc Plated Steel  
Grip: PVC (Red)  
Spindle: Steel / Neoprene

**Features**

- Hand grip with cushioned rib profile for improved user comfort
- All body and linkage components are zinc plated to resist corrosion
- Pivot points are fitted with hardened steel or stainless steel rivets to maintain accuracy and provide a long service life
- Clamps with adjustable spindles are manufactured with a formed end to the arm, which captivates the spindle should it become loose during operation
- Flanged washers are supplied with all slotted arm versions
- The arm and handle opening angle can be increased on some models by the removal of a positioning pin on the base of the clamp



Item No.	Holding Force	Arm Opens	Handle Opens	Pack Qty.
493781	551 lbf.	95° - 150°	71° - 100°	1



Item No.	Holding Force	Arm Opens	Handle Opens	Pack Qty.
493782	771 lbf.	90° - 180°	70° - 100°	1

## KNOBS, HANDLES & GRIPS



800 847 0486 | [www.essentracomponents.com](http://www.essentracomponents.com)



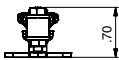
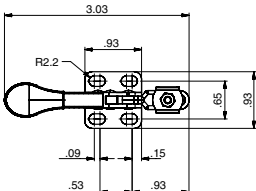
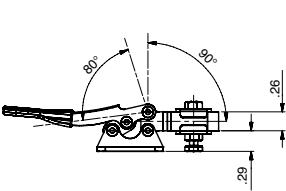
SR5447 Series  
Toggle Clamp Horizontal

Specifications

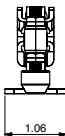
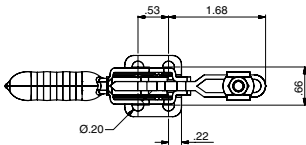
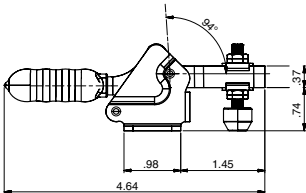
- Material:  
Clamp: Zinc Plated Steel  
Grip: PVC (Red)  
Spindle: Steel / Neoprene

Features

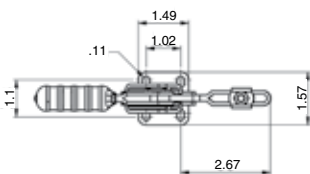
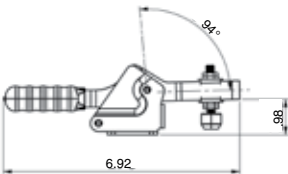
- Hand grip with cushioned rib profile for improved user comfort
- All body and linkage components are zinc plated to resist corrosion
- Pivot points are fitted with hardened steel or stainless steel rivets to maintain accuracy
- Clamps with adjustable spindles are manufactured with a formed end to the arm, which captivates the spindle should it become loose during operation
- The handle and arm linkages are designed to provide a smooth continuous action when the handle is opened and closed



Item No.	Holding Force	Arm Opens	Handle Opens	Pack Qty.
493783	83 lbf.	90°	80°	1



Item No.	Holding Force	Arm Opens	Handle Opens	Pack Qty.
493784	143 lbf.	94°	76°	1



Item No.	Holding Force	Arm Opens	Handle Opens	Pack Qty.
493785	198 lbf.	94°	76°	1

(Continued on next page)





HORIZONTAL TOGGLE CLAMPS

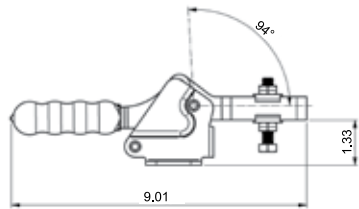
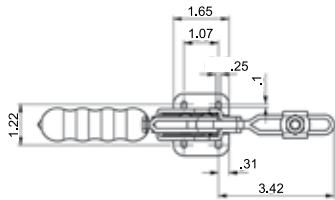
SR5447 Series  
Toggle Clamp Horizontal

Specifications

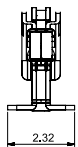
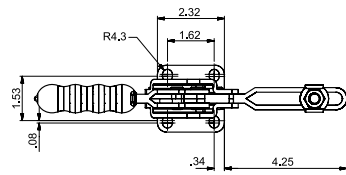
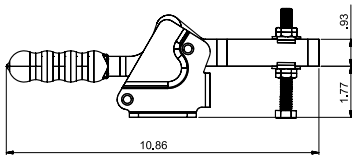
- Material:  
Clamp: Zinc Plated Steel  
Grip: PVC (Red)  
Spindle: Steel / Neoprene

Features

- Hand grip with cushioned rib profile for improved user comfort
- All body and linkage components are zinc plated to resist corrosion
- Pivot points are fitted with hardened steel or stainless steel rivets to maintain accuracy
- Clamps with adjustable spindles are manufactured with a formed end to the arm, which captivates the spindle should it become loose during operation
- The handle and arm linkages are designed to provide a smooth continuous action when the handle is opened and closed



Item No.	Holding Force	Arm Opens	Handle Opens	Pack Qty.
493786	517 lbf.	94°	76°	1



Item No.	Holding Force	Arm Opens	Handle Opens	Pack Qty.
493787	771 lbf.	90°	75°	1

ESSENTIAL SOLUTIONS

DELIVERED



VISIT OUR WEBSITE  
[www.essentracomponents.com](http://www.essentracomponents.com)



GIVE US A CALL  
800 847 0486



SEND US AN EMAIL  
[sales@essentracomponents.com](mailto:sales@essentracomponents.com)



SEND US A FAX  
866 561 6617



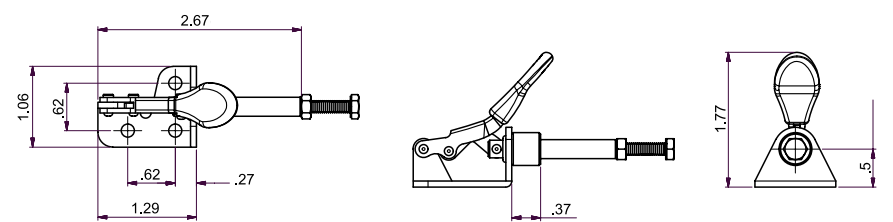
SR5448 Series  
Toggle Clamp Push Pull

Specifications

- Material:  
Clamp: Zinc Plated Steel  
Grip: PVC (Red)  
Spindle: Steel

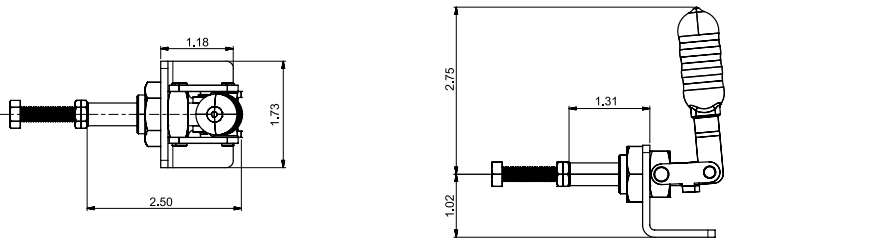
Features

- Hand grip with cushioned rib profile for improved user comfort
- All body and linkage components on the light duty range are zinc plated to resist corrosion
- The heavy-duty range has ductile cast iron bases for strength and rigidity
- A close tolerance is maintained between the base and plunger to allow use for pin location and gauging as well as clamping applications
- Pivot points are fitted with hardened steel or stainless steel rivets to maintain accuracy and provide a long service life



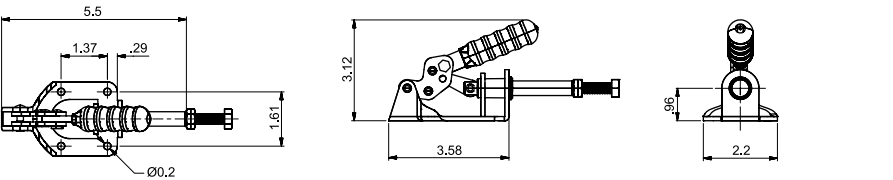
Item No.	Holding Force	Plunger Stroke	Handle Opens	Pack Qty.
493788*	99 lbf.	.62	190°	1

\*Nylon spindle  
Light duty with flat base



Item No.	Holding Force	Plunger Stroke	Handle Opens	Pack Qty.
493789	209 lbf.	.74	185°	1

Mounting bracket included



Item No.	Holding Force	Plunger Stroke	Handle Opens	Pack Qty.
493790	299 lbf.	1.25	180°	1

Light duty with flat base

(Continued on next page)



# PUSH PULL TOGGLE CLAMPS

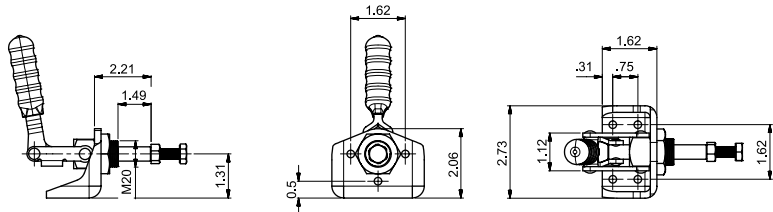
## SR5448 Series Toggle Clamp Push Pull

Specifications

- Material:  
Clamp: Zinc Plated Steel  
Grip: PVC (Red)  
Spindle: Steel

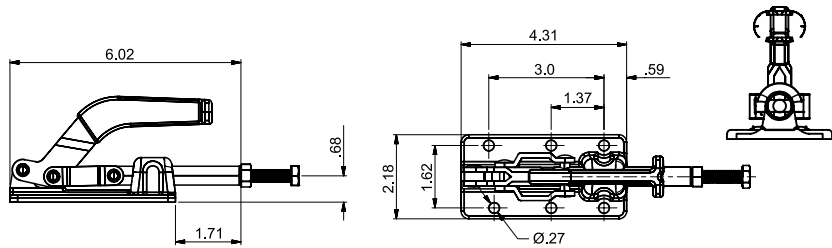
Features

- Hand grip with cushioned rib profile for improved user comfort
- All body and linkage components on the light duty range are zinc plated to resist corrosion
- The heavy-duty range has ductile cast iron bases for strength and rigidity
- A close tolerance is maintained between the base and plunger to allow use for pin location and gauging as well as clamping applications
- Pivot points are fitted with hardened steel or stainless steel rivets to maintain accuracy and provide a long service life



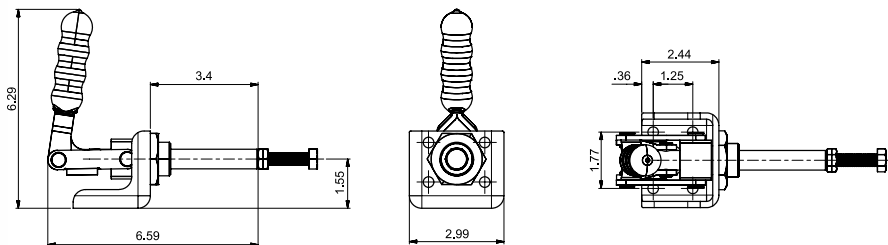
Item No.	Holding Force	Plunger Stroke	Handle Opens	Pack Qty.
493791	385 lbf.	1.49	185°	1

Mounting bracket included



Item No.	Holding Force	Plunger Stroke	Handle Opens	Pack Qty.
493792	700 lbf.	1.62	180°	1

Heavy duty flat base 45° handle



Item No.	Holding Force	Plunger Stroke	Handle Opens	Pack Qty.
493793	826 lbf.	2.63	185°	1

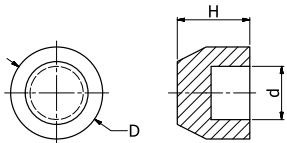
Mounting bracket included



SR5455 Series  
Toggle Clamp Caps

- Specifications:
- Material: Neoprene

- Features
- Replacement pad designed to avoid marking fragile or polished surfaces



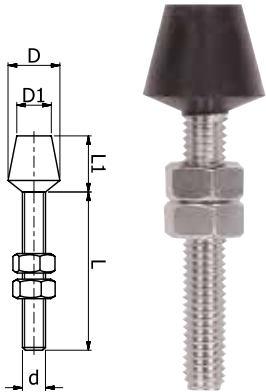
Part Number	Dimensions			Compatible with	Std Pack Qty
	d	D	H		
493812	.21	.43	.33	493788, 493803, 493806, 493809	1
493813	.25	.49	.41	493779, 493784, 493804, 493807	1
493814	.33	.61	.47	493780, 493785, 493789, 493805, 493808	1
493815	.45	.74	.59	493780, 493785, 493804, 493807, 493810	1

SR5456 Series  
Toggle Clamp Tipped Spindle

- Specifications
- Material: Neoprene/Steel

- Features
- Designed to avoid marking fragile or polished surfaces

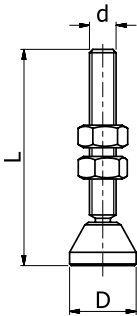
Part Number	Dimensions					Compatible with	Std Pack Qty
	d	L	L1	D	D1		
493816	M4	1.25	.39	.47	.31	493788	1
493817	M5	.78	.47	.55	.43	493779, 493784	1
493818	M6	1.45	.51	.62	.43	493780, 493785, 493789	1
493819	M8	2.16	.78	.66	.47	493781, 493786, 493790, 493791, 493792	1



SR5457 Series  
Toggle Clamp Swivel Foot Spindle

- Material: Steel

- Features
- For use where a large area needs to be clamped or the clamping force needs to be spread over a larger area than just the spindle and surface area



Part Number	Dimensions			Compatible with	Std Pack Qty
	d	D	L		
493820	M5	.47	1.57	493779, 493784	1
493821	M6	.47	1.96	493780, 493785, 493789	1
493822	M8	.78	2.55	493781, 493786, 493790, 493791, 493792	1



# TOGGLE CLAMP LATCHES

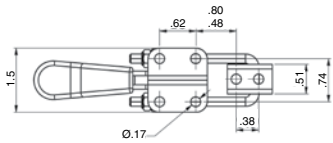
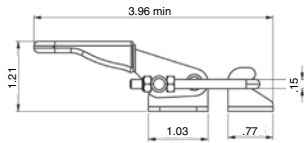
## SR5450 Series Toggle Clamp Latch

Specifications

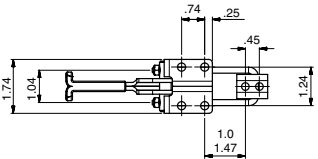
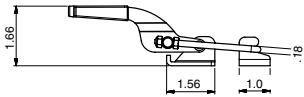
- Material:  
Clamp: Zinc Plated Steel  
Grip: PVC (Red)  
Spindle: Steel

Features

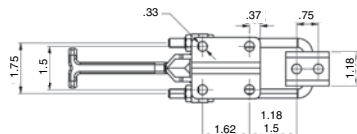
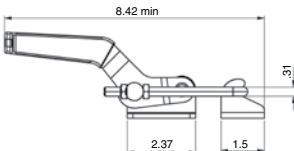
- Hand grip with cushioned rib profile for improved user comfort
- All body and linkage components on the light duty range are zinc plated to resist corrosion
- Pivot points are fitted with hardened steel or stainless steel rivets to maintain accuracy and provide a long service life



Item No.	Holding Force	Pack Qty.
493796	359 lbf.	1



Item No.	Holding Force	Pack Qty.
493797	700 lbf.	1



Item No.	Holding Force	Pack Qty.
493798	1983 lbf.	1



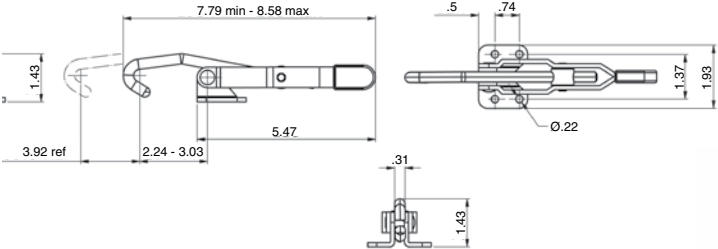
SR5449 Series  
Toggle Clamp Hook

Specifications

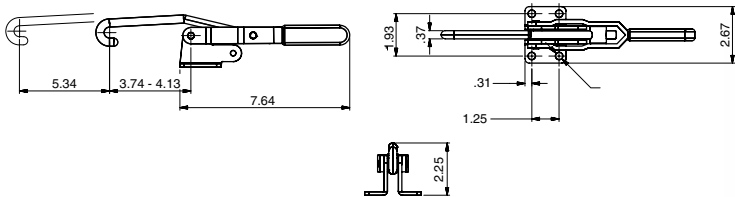
- Material:  
Clamp: Zinc Plated Steel  
Grip: PVC (Red)  
Spindle: Steel

Features

- Hand grip with cushioned rib profile for improved user comfort
- All body and linkage components on the light duty range are zinc plated to resist corrosion
- Pivot points are fitted with hardened steel or stainless steel rivets to maintain accuracy and provide a long service life



Item No.	Holding Force	Arm Opens	Pack Qty.
493794	375 lbf.	3.92	1



Item No.	Holding Force	Arm Opens	Pack Qty.
493795	749 lbf.	5.34	1

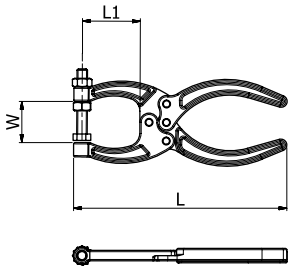
SR5451 Series  
Toggle Clamp Plier

Specifications

- Material:  
Clamp: Zinc Plated Steel  
Spindle: Steel

Features

- Pivoting jaw to allow a deep throat depth to open and close easily when clamping awkward profiles
- The jaw spindle can be pre-set to achieve the optimum clamping distance and pressure
- Pre-setting is most useful for repetitious clamping applications
- Zinc plated finish to resist corrosion, profiled handles for operator comfort
- Spindles are supplied with a copper plated surface finish to resist weld spatter



Item No.  
493799



Item No.  
493800



Item No.  
493801



Item No.  
493802

Item No.	Holding Force	L	L1	W	Thread Size	Quick Release	Pack Qty.
493799	198 lbf.	5.125	1.125	1.0 to 2.0	1/40-20	—	1
493800	352 lbf.	6.5	1.750	1.25 to 2.56	5/16-18	—	1
493801	705 lbf.	8.5	2.750	1.75 to 3.62	3/8-16	Yes	1
493802	705 lbf.	8.5	2.750	3.0 to 4.875	3/8-16	Yes	1