

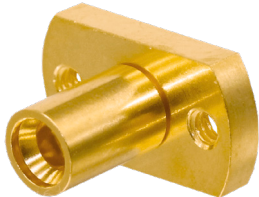
Vertical Launch Connectors

SMPM and SMP Compression Connectors

Introducing the SMPM and SMP Male Vertical Launch Solderless PCB Compression Mount, in Microstrip and Stripline connectors with RF Performance from DC to 65 GHz and 40 GHz respectively. These connectors are screw-mount and solderless, allowing for quick and easy mounting and removal on PC boards. There are two versions for supporting both microstrip and stripline designs. The side groove part enables microstrip or grounded coplanar waveguide (GCPW) designs.

Maximum VSWR of 1.50 out to 65 GHz; Insertion loss of $0.12 \sqrt{F}$ dB Max (F in GHz).

Rugged design to accommodate both radial and axial misalignment, caused by shock and vibration in harsh environments. Available in Smooth Bore, Limited Detent and Full Detent versions to work with our bullet adapters. Intermateable to other industry connectors such as the GPO® and GPPO®. Contact and body materials gold plated beryllium copper (BeCu). Designed to conform to DSCC 94007, 94008 and MIL-STD-34.

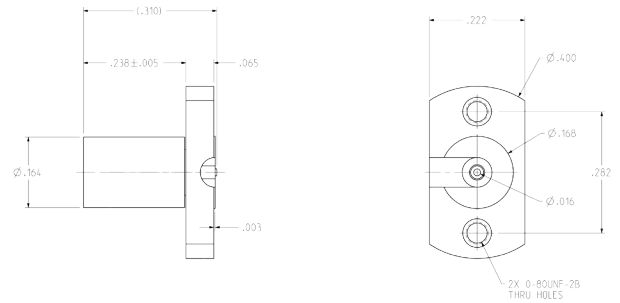


Applications

- Aerospace
- Military
- Broadband
- Instrumentation
- LAN Routers
- Telecommunications
- Satellite Communication Equipment (SATCOM)

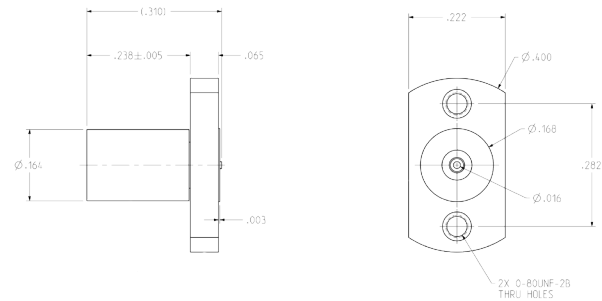
SMP Compression Connector, Microstrip

Part Number	Material	Impedance	Maximum Frequency	VSWR
127-0701-631	Gold-Plated	50 Ohms	DC - 40 GHz	1.5 Max



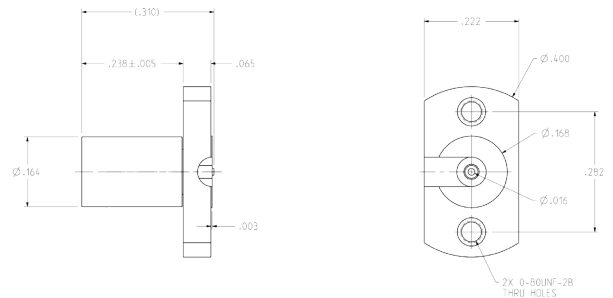
SMP Compression Connector, Stripline

Part Number	Material	Impedance	Maximum Frequency	VSWR
127-0701-641	Gold-Plated	50 Ohms	DC - 40 GHz	1.3 Max



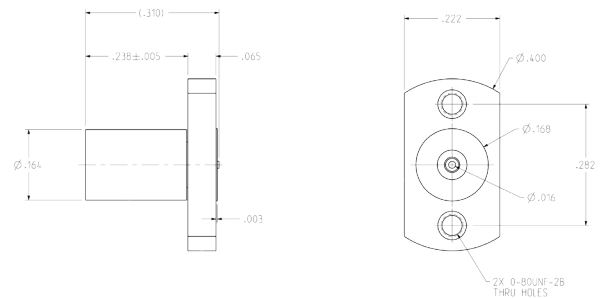
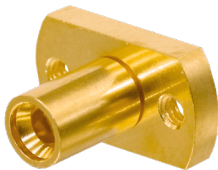
SMPM Compression Connector, Microstrip

Part Number	Material	Impedance	Maximum Frequency	VSWR
125-0701-241	Gold-Plated	50 Ohms	DC - 65 GHz	1.4 Typical from DC - 50 GHz



SMPM Compression Connector, Stripline

Part Number	Material	Impedance	Maximum Frequency	VSWR
125-0701-251	Gold-Plated	50 Ohms	DC - 65 GHz	1.4 Typical from DC - 50 GHz



Note:

Per the drawing, vertical launch connectors can be mounted with screw type of 08 UNF-28.
(Screws to be purchased separately).



North America
+1 507.833.8822
ccsorders@us.cinch.com

belfuse.com/cinch