



Digi ConnectCore 95 Development Kit

High-performance all-in-one embedded development platform based on NXP i.MX 95 with integrated cloud, security and AI/ML services for scalable industrial IoT

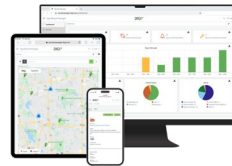
The **Digi ConnectCore® 95 Development Kit** is a high-performance, all-in-one system-on-module (SOM) platform based on the NXP® i.MX 95 application processor, integrating cloud, security and AI/ML services to simplify development of intelligent connected devices.

With built-in connectivity and remote management with secure over-the-air (OTA) software updates, it reduces complexity, accelerates time-to-market, and ensures long-term compliant operations, including CRA-ready security requirements and scalability. By embedding hardware, cloud services, and lifecycle management in a single platform, it helps organizations innovate faster, strengthen product resilience and future-proof their solutions in evolving markets.

ConnectCore 95 empowers businesses to deliver smarter medical devices, secure industrial systems, and advanced retail solutions. The globally certified Wi-Fi 6E tri-band connectivity (2.4/5/6 GHz) with 80 MHz channel bandwidth provides high throughput for higher-end use cases and reduces congestion/interference issues from existing networks and older devices. The Digi ConnectCore 95 SOM is designed for reliability across a wide range of applications with up to six power-efficient Arm® Cortex®-A55 cores for performance, plus Cortex-M33, Cortex-M7, NPU, ISP and NXP PMICs for maximum power efficiency.

The Digi SMTplus® surface-mount module is optimized for the i.MX 95 processor and delivers maximum design flexibility and robustness for portable and demanding industrial applications. The SMARC® form factor offers a standardized, connector-based solution for easy integration, replacement and maintenance.

Digi ConnectCore SOM solutions provide built-in security with **Digi TrustFence®**, a fully integrated device-security framework simplifying the process of securing connected devices. **Essential Digi ConnectCore Cloud Services** are included with every SOM. **Premium Digi ConnectCore Cloud Services** (with flexible pay-per-use option), **Digi ConnectCore Security Services** and **Expert Support** extend capabilities for additional development, deployment, maintenance and long-term lifecycle support. **Digi Wireless Design Services** (WDS) provides additional solutions to get your products and solutions to market smarter and faster.



Connect this device with **Digi ConnectCore Cloud Services**.
Create. Configure. Deploy. Manage.

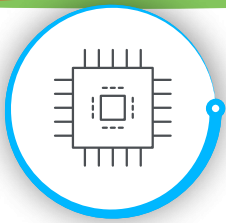
The kit includes:

- ✓ Digi ConnectCore 95 development board with SOM
- ✓ Digi ConnectCore Cloud Services Premium 1-year license
- ✓ Digi ConnectCore Security Services trial account
- ✓ Console port cable and
- ✓ Dual-band wireless antenna
- ✓ Power supply and accessories
- ✓ Reference designs and online documentation

PART NUMBER	DESCRIPTION
CC-WMX95-KIT	Digi ConnectCore 95 Development Kit
CC-WMX95-2G-KIT	Digi ConnectCore 95 Development Kit

Key features, benefits and applications

- Complete industrial i.MX 95 embedded SOM platform
- All-in-one solution with integrated SOC 2® Type 2 compliant **Essential Digi ConnectCore Cloud Services** and **Digi ConnectCore Security Services**
- AI/ML NXP eIQ® Neutron neural processing unit (NPU)
- Pre-certified tri-band 802.11ax Wi-Fi 6E and Bluetooth® 5
- Digi SMTplus form factor (40 x 45 mm) for ultimate reliability
- SMARC 2.2 plugable form factor (82 x 50 mm)
- Superior power management, hardware and software support
- Seamless cellular modem and **Digi XBee®** integration
- High level of pin-compatibility with **Digi ConnectCore SOMs**
- Built-in **Digi TrustFence** device security, identity and privacy
- **Digi Embedded Yocto** Linux support
- Turnkey development services available from **Digi WDS**



DIGI CONNECTCORE 95 DEVELOPMENT KIT

Solution and Services



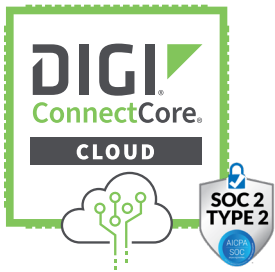
Connect this device with Digi ConnectCore Cloud Services. Create. Configure. Deploy. Manage.

A complete all-in-one system-on-module solution

Digi ConnectCore 95 delivers a complete solution with **Essential Digi ConnectCore® Cloud Services** included with every SOM for integrated edge-to-cloud connectivity to enable over-the-air software updates, remotely manage deployments, improve product quality and ease-of-use, automate processes and reduce costs. Digi ConnectCore 95 has everything you need to launch products faster, protect investments, scale and stay ahead.

Manage your network and connected devices from edge-to-cloud (SOC 2 Type 2 compliant)

Digi ConnectCore Cloud Services enable OEMs in a wide range of industries to create connected devices with remote-dashboard, -service and -application capabilities using Digi ConnectCore system-on-modules (SOMs).



- ✓ Industry-leading cloud and edge tools for rapid device deployment, and easier asset management
- ✓ Automate mass firmware and software updates to enhance functionality, stay in compliance and scale your deployment
- ✓ Access data from edge devices that were previously out of reach
- ✓ Receive real-time alerts and detailed network reports
- ✓ Integrate device data through open APIs for greater insights and control with third-party applications
- ✓ Monitor network, device, and asset performance and security with bi-directional communications
- ✓ Accelerate development, testing and deployment of web applications for connected devices with a flexible, scalable **IoT application framework and IoT device simulator**

Keep your product secure during the entire product lifecycle

Digi ConnectCore Security Services enable customers to keep products secure and meet requirements like the **Cyber Resilience Act**. These are services and tools that enable you to maintain the security of your devices throughout the entire product lifecycle.



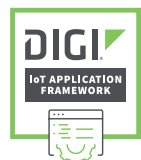
- ✓ Make security easier and more accessible by providing a curated security analysis
- ✓ Provide visibility on the Digi Embedded Yocto (DEY) security status with available vulnerability reports
- ✓ Identify security issues in Digi ConnectCore DEY-based customer products
- ✓ Monitor and maintain security in devices throughout the entire product lifecycle
- ✓ Utilize Digi engineering and consulting services to help resolve security issues
- ✓ Take advantage of SBOM analysis and CVE monitoring, whitelisting and filtering for actionable reports
- ✓ Review binary image scans for additional vulnerability insights

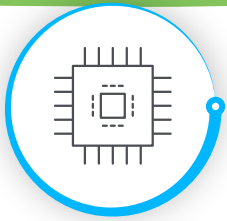
Build, deploy and manage throughout the lifecycle

Digi ConnectCore Tools are included as part of the complete Digi ConnectCore 95 solution to help companies build, deploy and manage throughout the lifecycle.



- ✓ **ConnectCore Smart IOmux**
Simplify design and software configuration
- ✓ **ConnectCore Quick Setup**
Provisioning during development and in production
- ✓ **IoT Application Framework**
Enable customized front-end web applications for products
- ✓ **IoT Device Simulator**
Create virtual devices to test your solution





DIGI CONNECTCORE 95 DEVELOPMENT KIT

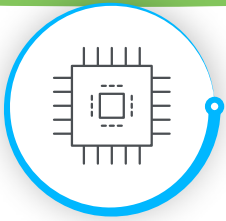
Specifications



Connect this device with
Digi ConnectCore Cloud Services.
Create. Configure. Deploy. Manage.

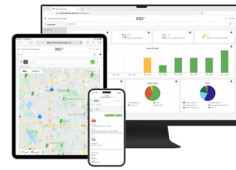
Specifications	Digi ConnectCore 95 SMT SOM	Digi ConnectCore 95 SMARC
APPLICATION PROCESSOR	NXP i.MX 95 <ul style="list-style-type: none"> Up to 6× Cortex-A55 core, up to 1.8 GHz (64-bit) 1× Arm Cortex-M7 core at 800 MHz and 1× Arm Cortex-M33 core at 250 MHz for real-time processing 	
MEMORY	Up to 128 GB flash (eMMC), up to 16 GB LPDDR5 (32-bit, ECC)	EEPROM — population option
ARTIFICIAL INTELLIGENCE*	AI/ML NXP eIQ Neutron NPU N3-1024S, 2 TOPs (hardware), up to 8 TOPs sparse model performance	
PMIC	NXP PF09 + PF53 and Energy Flex Multi-Domain architecture for maximum power efficiency	
VIDEO / GRAPHICS	GPU: Arm Mali G310 GPU (OpenGL® ES 3.2, Vulkan® 1.2, OpenCL 3.0), 2D Blitter VPU: 4K60p H.265/H.264 decode or encode (4K30p H.265/H.264 simultaneous encode and decode) LCD: Up to 3 simultaneous displays, 1× 333 M pixel/s MIPI-DSI (4-lane, 2.5 Gbps/lane) supporting 4K30p or 3840 x 1440p60, up to 1080p60 LVDS Tx (1× 8-lane) or 2x 1080p30 (2× 4-lane)	
CAMERA	MIPI-CSI (2× 4-lane, 2.5 Gbps/lane) with PHY (1 mux with DSI) with up to 8 virtual channels; up to 500 M pixel/s throughput to scale from 1× 4K30p to 4× 1080p30 cameras	
IMAGE SIGNAL PROCESSOR	NXP ISP (12 MP at 45 fps, 8 MP at 30 fps) with RGB-IR support (4x4 array pattern), YUV 420, YUV 422, YUV 444, RGB 888	
SECURITY	Digi TrustFence: secure boot, filesystem encryption, tamper detection, secure JTAG, secure console, secure build environments, secure firmware updates; EdgeLock® secure enclave: crypto, tamper detection, secure clock, secure boot, eFuse key storage, random number; Arm TrustZone (Cortex-A and Cortex-M) i.MX Safety Concept targeting ISO-26262 (ASIL-B) / IEC 61508 (SIL-2) NXP Safety Manager and NXP SafeAssure® Software Framework [Arm Cortex-M33] H/W Safety Checkers and Safe 2D display pipeline PQC Dilithium 3.1 signature verification (secure boot and debug)	
TRUSTED PLATFORM MODULE		Trusted Platform Module (TPM) — population option
PERIPHERALS / INTERFACES	2× PCIe Gen 3.0 (1-lane) 1× USB 3.0 5 Gbps Type C with PHY 1× USB 2.0 OTG with PHY 3× SD 3.0 / SDIO 3.0 / eMMC 5.1 8× Low Power Universal Asynchronous Receiver / Transmitter (LPUART) modules 8× Low Power I2C modules, 2x I3C 8× Low Power SPI (LPSP) modules, XSPI responder 5× FlexCAN with flexible data-rate (FD) support 6× Timer/Pulse-Width Modulator (PWM) with 16-bit counter 1× 12-bit ADC module with accurate internal voltage reference, up to 8 channels 2× 32-pin FlexIO interfaces (bus or serial I/O) Up to 112 GPIOs	2× PCIe Gen 3.0 (1-lane) 1× USB 3.0 5 Gbps Type C with PHY 4× USB 2.0 OTG with PHY 3× SD 3.0 / SDIO 3.0 / eMMC 5.1 8× Low Power Universal Asynchronous Receiver / Transmitter (LPUART) modules 8× Low Power I2C modules, 2x I3C 8× Low Power SPI (LPSP) modules, XSPI responder 2× FlexCAN with flexible data-rate (FD) support 6× Timer/Pulse-Width Modulator (PWM) with 16-bit counter 1× 12-bit ADC module with accurate internal voltage reference, up to 8 channels 2× 32-pin FlexIO interfaces (bus or serial I/O) Up to 112 GPIOs
AUDIO	17-lane I2S TDM (32-bit at 768 KHz) 8-channel PDM microphone input, Medium Quality Sound (MQS) output 1× S/PDIF input and output	
TEMPERATURE SENSOR		Temperature sensor — population option
ETHERNET	2× 1 GbE with TSN, AVB, IEEE 1588 PTP and Energy Efficient Ethernet (EEE); 1× 10 GbE	
WI-FI	Wi-Fi 6E 802.11ax tri-band, 80 MHz channel bandwidth, high throughput, 1×1 wireless (2×2 MIMO ready)	
BLUETOOTH	Bluetooth 5	

*TOPs varies based on model optimization, data type, and data size. 5 TOPs calculated by dividing VIP8000 2.3 TOPs rating by performance relative to N3-1024S (2.3 / 0.41 = 5.7).



DIGI CONNECTCORE 95 DEVELOPMENT KIT

Specifications



Connect this device with Digi ConnectCore Cloud Services. Create. Configure. Deploy. Manage.

Specifications	Digi ConnectCore 95 SMT SOM	Digi ConnectCore 95 SMARC
OPERATING TEMPERATURE	Industrial-rated -40 °C to 85 °C (-40 °F to 185 °F), -25 °C to 85 °C (-13 °F to 185 °F) or 0 °C to 70 °C (32 °F to 158 °F), depending on use case and enclosure/system design	
STORAGE TEMPERATURE	-50 °C to 125 °C (-58 °F to 257 °F)	
RELATIVE HUMIDITY	5% to 90% (non-condensing)	
RADIO APPROVALS**	US, Canada, EU, Japan, Australia/New Zealand, Brazil, Mexico	
EMISSIONS / IMMUNITY / SAFETY**	FCC Part 15 Class B, EN 55022 Class B, EN 61000-3-2, EN 61000-3-3, ICES- 003 Class B, VCCI Class II, AS 3548, FCC Part 15 Subpart C Section 15.247, IC (Industry Canada), RSS-210 Issue 5 Section 6.2.2(o), EN 300 328, EN 301 489-17, EN 55024, EN 301 489-3, Safety (IEC 62368-1); visit digi.com/resources/certifications for latest updates	
DESIGN VERIFICATION*	Temperature: IEC 60068-2-1, IEC 60068-2-2, IEC 60068-2-78 Vibration/shock: IEC 60068-2-6, IEC 60068-2-64, IEC 60068-2-27, HALT	
MECHANICAL DIMENSIONS	118 castellated vias, LGA-474, 1.27 mm pitch 40 mm x 45 mm x 3.5 mm (1.6 in x 1.8 in x 0.1 in)	SMARC 2.2, 314 pins 82 mm x 50 mm (3.23 in x 1.97 in)
PRODUCT WARRANTY	3-year	

**Visit digi.com/resources/certifications for latest updates.



Digi Wireless Design Services (WDS)

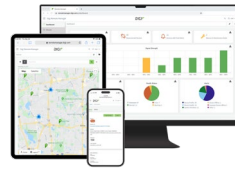
Digi WDS helps companies solve business problems and create innovative IoT products with embedded SOMs, wireless technologies, a library of proven IP and a dedicated team of creative designers and engineers. Let our RF experts and world class engineering team guide you through the development cycle from concept to certification and production.





DIGI CONNECTCORE 95 DEVELOPMENT KIT

Part Numbers



Connect this device with Digi ConnectCore Cloud Services. Create. Configure. Deploy. Manage.

Part Numbers	Digi ConnectCore 95 Development Kit*
CC-WMX95-KIT	Digi ConnectCore 95 Development Kit for SMTplus and SMARC with development board and Digi ConnectCore 95 wireless SOM, NPU, ISP, 8 GB LPDDR5, 32 GB eMMC, Digi ConnectCore Cloud Services Premium 1-year license and Digi ConnectCore Security Services trial account
CC-WMX95-2G-KIT	Digi ConnectCore 95 Development Kit for SMTplus and SMARC with development board and Digi ConnectCore 95 wireless SOM, NPU, ISP, 2 GB LPDDR5, 16 GB eMMC, Digi ConnectCore Cloud Services Premium 1-year license and Digi ConnectCore Security Services trial account

Part Numbers	Digi ConnectCore Cloud Services*
DIGI CONNECTCORE CLOUD SERVICES — FLEXIBLE PAY-PER-USE SUBSCRIPTION	
OEM-CS-PPU-BASE	Digi ConnectCore Cloud Services — Premium pay-per-use subscription Monthly usage fee per active device count including 60 MB/month/active device pooled telemetry data and unlimited OTA data
OEM-CS-PPU-DATA	Digi ConnectCore Cloud Services — Premium pay-per-use subscription Per average MB usage fee (with OEM-CS-PPU-BASE)

*Essential Digi ConnectCore Cloud Services included with Digi ConnectCore 95 SOM. Premium licensing and pay-per-use subscriptions offer additional capabilities and flexible options.

Part Numbers	Digi ConnectCore Security Services
CC-SEC-ESS	Digi ConnectCore Security Services — Essential 1-year
CC-SEC-PRM	Digi ConnectCore Security Services — Premium 1-year
CC-SEC-ENT	Digi ConnectCore Security Services — Enterprise 1-year
CC-SEC-ENT-ADD	Digi ConnectCore Security Services — Enterprise for additional product (same duration as main contract)

Part Numbers	Expert Support
DG-EXPE-24-15HRS	Expert Support Agreement — 1 year

The information provided in this document is preliminary and may be subject to change without notice.

For more information, visit [digi.com](https://www.digi.com).



For more information about the Digi ConnectCore 95 Development Kit, visit www.digi.com/connectcore95kit.

877-912-3444 | 952-912-3444

