

Prism[®]

Surface Mount Right Angle CBI[®]



Dialight's Prism® indicators are the industry's only SMD indicator series designed to survive 260°C peak reflow temperature AND provide the aesthetic appeal of a diffused lens for enhanced viewing. Ideal for limited-space applications and board-edge mounting, the Prism® series is available in a variety of package sizes including single level, bi-level, and tri-level configuration and in 2mm and 3mm lens size. The integral light pipes used in Prism® are engineered for maximum light transmission and minimal light bleed while the diffused lens is also ideal for bi-color and tri-color applications where color-mixing is desired.

Features & benefits

- Single, bi- and tri-color options
- Single, bi- and tri-level arrays
- Compatible with automatic pick-and-place equipment for reduced installation costs
- RoHs compliant
- Reflow ready at 260°C max
- Available with 2mA low current LEDs
- Eliminates wave soldering process
- Black, low profile PPA housing enhances the contrast ratio for better clarity
- Surface mount LED technology

Typical applications

- Data center infrastructure
- Servers - rack mount; blade; tower
- Storage: high-performance storage subsystems for high-end enterprise
- Storage networking hardware
- Fiber channel host bus adapter cards (HBAs); converged network adapter cards (CNAs); iSCSI adapter cards; InfiniBand adapter cards
- Next-Gen wireless
- Wireless infrastructure
- Electronic test and measurement instruments
- Networking equipment for enterprise data centers and telecom communication centers
- Switches, routers, and network control equipment interconnected using fiber optic and high speed wiring
- Communications testing equipment
- Process controls
- Automation
- Medical
- Handheld devices
- Battery powered applications (2mA version)



591 SERIES

3mm Prism®

Features & benefits

- Square and round lens
- The always-reliable industry standard in SMT packaged solutions
- Available in many single, bi- and tri-color options
- .345" x .170" x .198" high
- Lens size: .112" (2.84mm) dia. / .112" (2.84mm) square



592 SERIES

3mm Prism®

Features & benefits

- The always-reliable industry standard in SMT packaged solutions
- Single, bi- and tri-colors
- .665" x .180" x .405" high
- Lens size: .09" (2.28mm) dia.

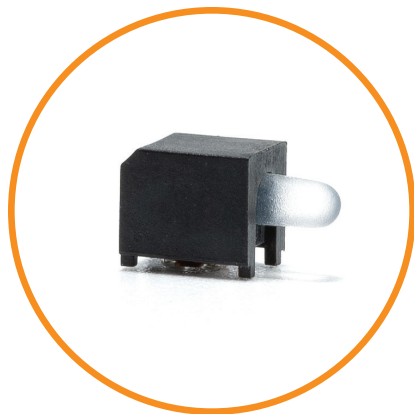


593 SERIES

3mm Prism®

Features & benefits

- The always-reliable industry standard in SMT packaged solutions
- Replace mixed technology of existing through hole indicators
- .883" x .167" x .588" high
- Lens size: .112" (2.84mm) dia.



NEW! 594 SERIES
Prism® Surface Mount LED
1.6mm Round Lens, 20 mA and 2 mA

Features & benefits

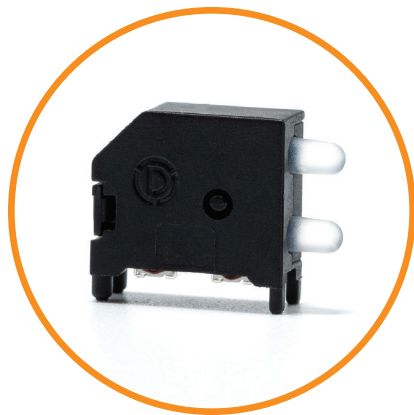
- Compatible with automatic placement equipment
- Packaged in 16mm tape, 7" reel (400 pcs/reel), 13" reel (1600 pcs/reel) and 20 piece strips
- Compatible with surface mount reflow soldering processes
- Housing material meets UL-94V-0 flammability ratings
- Design provides increased indication without increased space
- Packaged in moisture barrier bags for dry packaging per IPC/JEDEC J-STD-033
- Helps eliminate mixed technology PC board processing
- MSL2 for 2 mA, MSL3 for 20 mA
- Lens size: 0.063" (1.6mm) dia.



595 SERIES
2mm Prism®

Features & benefits

- A mid-range option that is great for backlighting
- The market-leading compact right angle package
- Single colors
- .148" x .098" x .141" high
- Lens size: 0.078" (2mm) dia.



NEW! 596 SERIES
Prism® Surface Mount LED
1.6mm Round Lens, 20 mA and 2 mA

Features & benefits

- Compatible with automatic placement equipment
- Packaged in 16mm tape, 13" reel (500 pcs/reel) and 10 piece sample strips
- Compatible with surface mount reflow soldering processes
- Housing material meets UL-94V-0 flammability ratings
- Design provides increased indication without increased space
- Helps eliminate mixed technology PC board processing
- Packaged in moisture barrier bags for dry packaging per IPC/JEDEC J-STD-033, MSL2 for 2 mA, MSL3 for 20 mA
- Lens size: 0.063" (1.6mm) dia.