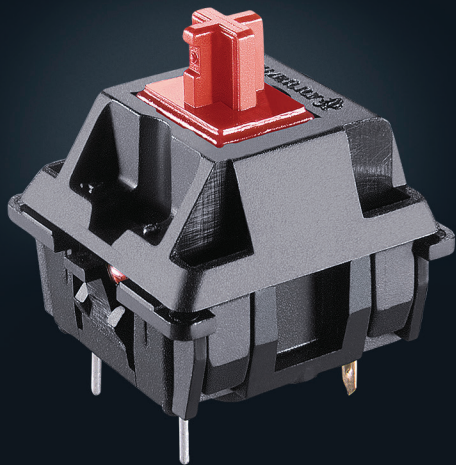


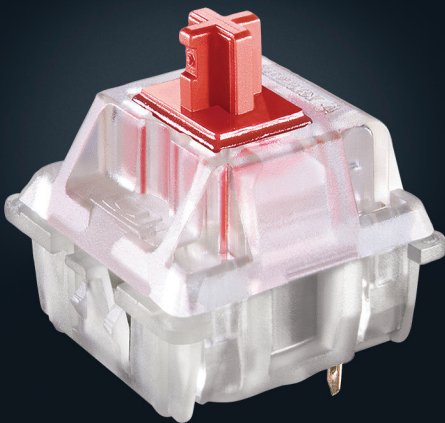


KEYSWITCH



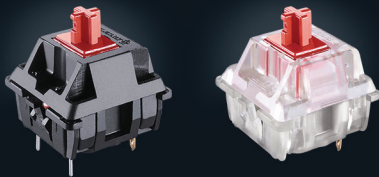
CHERRY MX

CHERRY MX keyswitches are mechanical input elements with single-pole closing contacts featuring the long-lasting performance and reliability that has made CHERRY MX the world leader when it comes to quality.



CHERRY MX RGB

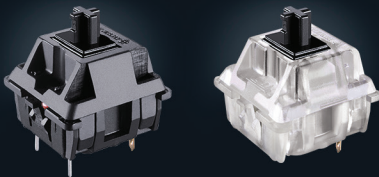
CHERRY MX RGB turns a keyboard into a work of art with individual lighting. Based on over 16 million colors for each key*. The underlying Cherry refract technology delivers high contrast, lots of light and no shadows, with consistent illumination on every keycap.



MX RED & RGB RED Linear 45 cN

EFFORTLESS AND FAST: CHERRY MX RED is often the keyswitch of choice for gamers who meticulously select a mechanical keyboard, as they appreciate its long-lasting performance.

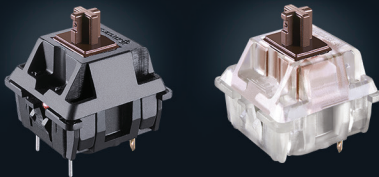
RED: MX1A-L1xx
RGB RED: MX1A-L1NA/B



MX BLACK & RGB BLACK Linear 60 cN

CHERRY MX BLACK with linear feel and very easy operation. The contact actuates without a tactile switching point. Medium spring resistance for precise key operation. Perfect for situations that require precise data entry.

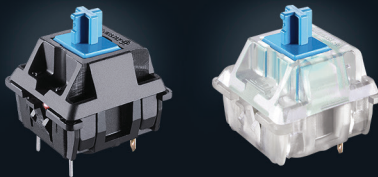
BLACK: MX1A-11xx
RGB BLACK: MX1A-11NA/B



MX BROWN & RGB BROWN Tactile 55 cN

CHERRY MX BROWN with soft pressure point and easy operation. The contact actuation can be felt as a soft, tactile switching point. Light spring resistance for effortless key operation. Perfect for prolonged operation and nonstop typists.

BROWN: MX1A-G1xx
RGB BROWN: MX1A-G1NA/B



MX BLUE & RGB BLUE Klick 60 cN

CHERRY MX BLUE with crystal clear click pressure point and easy operation. The contact actuation is tactile as a precise switching point and can be heard as a <<click>>. Medium spring resistance for unerring key operation. Perfect for situations that require precise entries.

BLUE: MX1A-E1xx
RGB BLUE: MX1A-E1NA/B

* Scope of supply does not include LED

	MX RED & RGB RED	MX SILENT RED & RGB RED	MX RGB NATURE WHITE	MX BLACK & RGB BLACK	MX SILENT BLACK & RGB BLACK	MX SPEED SILVER & RGB SILVER	MX BROWN & RGB BROWN	MX BLUE & RGB BLUE
Force	45 cN		55 cN	60 cN		45 cN	55 cN	60 cN
Operation characteristics	Linear						Tactile	
Pressure point	Not noticeable						Noticeable	
Pretravel	2.0 mm	1.9 mm	2.0 mm	2.0 mm	1.9 mm	1.2 mm	2.0 mm	2.2 mm
Max. sound pressure level**	60 dB	45 dB	60 dB	60 dB	45 dB	-	60 dB	60 dB

** Measurement without response body

CHERRY MX SILENT

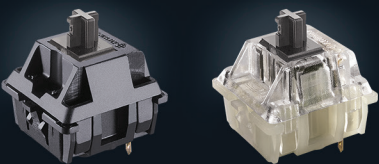
Silence is golden.

CHERRY MX keyswitches, with patented noise reduction, feature integrated 2-component stem and unique Gold Crosspoint contact technology.



MX SILENT RED & RGB RED Linear 45 cN

SILENT RED: MX3A-L1xx
SILENT RGB RED: MX3A-L1NA/B



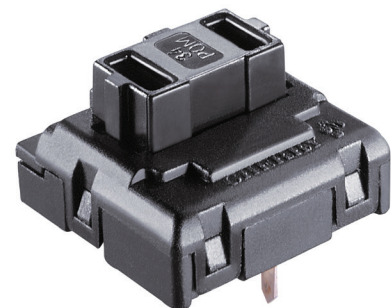
MX SILENT BLACK & RGB BLACK Linear 60 cN

SILENT BLACK: MX3A-11xx
SILENT RGB BLACK: MX3A-11NA/B



MX SPEED SILVER & RGB SILVER Linear 45 cN

SILVER: MX1A-51xx
RGB SILVER: MX1A-51NA/B



ML1A-11xW

ML

ML1A is the lowest profile flat version of the world's leading precision technology for CHERRY mechanical keyswitches. The CHERRY Gold Crosspoint contact concept and the unprecedented production quality are unique.

- Actuation force: 45cN (grams)
- Pressure point force: 50cN (grams)
- Switching characteristic: Linear
- Switching point: 1.5mm
- Total Travel: 3.0mm



For our full product portfolio, please visit www.cherryamericas.com
1-800-510-1689 • sales@cherryamericas.com

