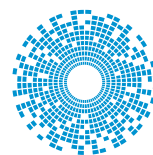




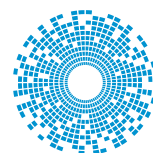
Ethernet Solutions

for BROADCOM - Mass Market PHYs

Product Selection Guide



bel MAGNETIC
SOLUTIONS
a bel group



stewart
CONNECTOR
a bel group



Disclaimer: Broadcom Limited owns the trademarked logo

The Stewart Connector and Bel Magnetic Solutions brands encompass a comprehensive portfolio of connector and magnetic options that combine Bel's connector and magnetic design expertise to provide the highest level of connectivity and signal conditioning.

Connector Options

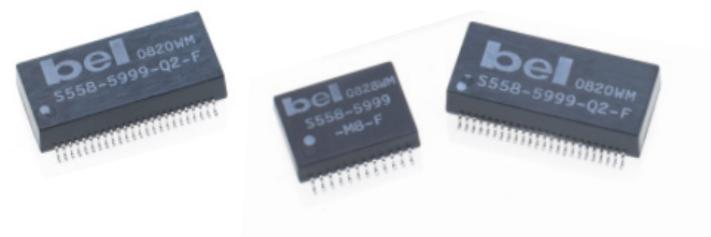
- Multi-port configurations: 1x2 / 1x4
- Stacked configurations: 2x1 / 2x4 / 2x6 / 2x8
- With or without LED's
- Vertical mount packaging
- Enhanced shielding panel grounds

Magnetic Options

- 10/100 AutoM 4-5-18 DIX
- 10/100/1000 Gigabit
- Power over Ethernet (PoE) options
- Extended temperature range of -40°C to +85°C
- 1, 2, and 4 port solutions

Bel Magnetic Solutions

Discrete LAN Magnetics product line consists of a broad range of magnetic-based solutions designed for use in high-speed computer and networking applications. Bel's portfolio of single, dual and quad SMT modules are compatible with IEEE 802.3 Ethernet standards for 10/100, 1G, 2.5G, 5G and 10GBaseT transmission. Product development will continue to focus on devices compatible with the bandwidth required to support the convergence of voice/video/ data networking, high-performance computing, and storage traffic within the enterprise space and data centers.



Stewart Connector

Stewart Connector portfolio of products include one of the broadest ranges of Ethernet connectivity available in the market today. Our interconnect product line includes passive jacks, plugs, and cable assemblies that provide connectivity in networking equipment. All of our connector products are designed to meet industry standard performance requirements and are capable of delivering data speeds through 10GBaseT Ethernet. In addition, our products are designed to exceed the requirements for all existing PoE standards including: PoE, PoE+, and 100W PoE.



10/100 PHYs

IC Series	Part Numbers				Port Config	LEDs	Port Orientation	Application	Operating Temp
	Bel Magnetic Solutions	No. of Ports	Stewart Connector	No. of Ports					
BCM5380 BCM5220 BCM5228 BCM5238 BCM5248	S558-5999-46-F	1	SS-7488SC5-GG-PG4-BA	1	1X1	Yes	Tab Down	10/100BaseT	0 to 70°C
			SS-700810S-A-PG4-BA	1	1X1	No	Tab Down	10/100BaseT	0 to 70°C
			SS-74301-001	1	1X1	Yes	Vertical	10/100BaseT	0 to 70°C
			SS-7188VS-A-NF-50	1	1X1	No	Vertical	10/100BaseT	0 to 70°C
			SS-748802SC5-YG-PG4-BZ	2	1X2	Yes	Tab Down	10/100BaseT	0 to 70°C
			SS71800-035F	2	1X2	No	Tab Down	10/100BaseT	0 to 70°C
			SS-748804SC5-YG-PG4-BZ	4	1X4	Yes	Tab Down	10/100BaseT	0 to 70°C
			SS71800-041F	4	1X4	No	Tab Down	10/100BaseT	0 to 70°C
			SS-74500-029	2	2X1	Yes	Stacked	10/100BaseT	0 to 70°C
			SS-73100-082	2	2X1	No	Stacked	10/100BaseT	0 to 70°C
			SS-74500-020	4	2X2	Yes	Stacked	10/100BaseT	0 to 70°C
			SS-7388H22S-PG4-AC-50	4	2X2	No	Stacked	10/100BaseT	0 to 70°C
			SS-74500-024	8	2X4	Yes	Stacked	10/100BaseT	0 to 70°C
			SS-73100-073	8	2X4	No	Stacked	10/100BaseT	0 to 70°C
			SS-74500-028	12	2X6	Yes	Stacked	10/100BaseT	0 to 70°C
			SS73100-046F	12	2X6	No	Stacked	10/100BaseT	0 to 70°C
			SS-74500-022	16	2X8	Yes	Stacked	10/100BaseT	0 to 70°C
			SS73100-047F	16	2X8	No	Stacked	10/100BaseT	0 to 70°C
BCM5222	S558-5999-Q9-F	4	SS-7488SC5-GG-PG4-BA	1	1x1	Yes	Tab Down	10/100BaseT	0 to 70°C
			SS-700810S-A-PG4-BA	1	1x1	No	Tab Down	10/100BaseT	0 to 70°C
			SS-74301-001	1	1x1	Yes	Vertical	10/100BaseT	0 to 70°C
			SS-7188VS-A-NF-50	1	1x1	No	Vertical	10/100BaseT	0 to 70°C
			SS-748802SC5-YG-PG4-BZ	2	1x2	Yes	Tab Down	10/100BaseT	0 to 70°C
			SS71800-035F	2	1x2	No	Tab Down	10/100BaseT	0 to 70°C
			SS-748804SC5-YG-PG4-BZ	4	1x4	Yes	Tab Down	10/100BaseT	0 to 70°C
			SS71800-041F	4	1x4	No	Tab Down	10/100BaseT	0 to 70°C
			SS-74500-029	2	2x1	Yes	Stacked	10/100BaseT	0 to 70°C
			SS-73100-082	2	2x1	No	Stacked	10/100BaseT	0 to 70°C
			SS-74500-020	4	2x2	Yes	Stacked	10/100BaseT	0 to 70°C
			SS-7388H22S-PG4-AC-50	4	2x2	No	Stacked	10/100BaseT	0 to 70°C
			SS-74500-024	8	2x4	Yes	Stacked	10/100BaseT	0 to 70°C
			SS-73100-073	8	2x4	No	Stacked	10/100BaseT	0 to 70°C
			SS-74500-028	12	2x6	Yes	Stacked	10/100BaseT	0 to 70°C
			SS73100-046F	12	2x6	No	Stacked	10/100BaseT	0 to 70°C
			SS-74500-022	16	2x8	Yes	Stacked	10/100BaseT	0 to 70°C
			SS73100-047F	16	2x8	No	Stacked	10/100BaseT	0 to 70°C

10/100 PHYs (continued)

IC Series	Part Numbers				Port Config	LEDs	Port Orientation	Application	Operating Temp
	Bel Magnetic Solutions	No. of Ports	Stewart Connector	No. of Ports					
BCM5222	S558-5999-AA-F	4	SS-7488SC5-GG-PG4-BA	1	1x1	Yes	Tab Down	10/100BaseT	-40 to 85°C
			SS-700810S-A-PG4-BA	1	1x1	No	Tab Down	10/100BaseT	-40 to 85°C
			SS-74301-001	1	1x1	Yes	Vertical	10/100BaseT	-40 to 85°C
			SS-7188VS-A-NF-50	1	1x1	No	Vertical	10/100BaseT	-40 to 85°C
			SS-748802SC5-YG-PG4-BZ	2	1x2	Yes	Tab Down	10/100BaseT	-40 to 85°C
			SS71800-035F	2	1x2	No	Tab Down	10/100BaseT	-40 to 85°C
			SS-748804SC5-YG-PG4-BZ	4	1x4	Yes	Tab Down	10/100BaseT	-40 to 85°C
			SS71800-041F	4	1x4	No	Tab Down	10/100BaseT	-40 to 85°C
			SS-74500-029	2	2x1	Yes	Stacked	10/100BaseT	-40 to 85°C
			SS-73100-082	2	2x1	No	Stacked	10/100BaseT	-40 to 85°C
			SS-74500-020	4	2x2	Yes	Stacked	10/100BaseT	-40 to 85°C
			SS-7388H22S-PG4-AC-50	4	2x2	No	Stacked	10/100BaseT	-40 to 85°C
			SS-74500-024	8	2x4	Yes	Stacked	10/100BaseT	-40 to 85°C
			SS-73100-073	8	2x4	No	Stacked	10/100BaseT	-40 to 85°C
			SS-74500-028	12	2x6	Yes	Stacked	10/100BaseT	-40 to 85°C
			SS73100-046F	12	2x6	No	Stacked	10/100BaseT	-40 to 85°C
			SS-74500-022	16	2x8	Yes	Stacked	10/100BaseT	-40 to 85°C
			SS73100-047F	16	2x8	No	Stacked	10/100BaseT	-40 to 85°C
BCM5325	S558-5999-U7-F	1	SS-7488SC5-GG-PG4-BA	1	1x1	Yes	Tab Down	10/100BaseT	-40 to 85°C
			SS-700810S-A-PG4-BA	1	1x1	No	Tab Down	10/100BaseT	-40 to 85°C
			SS-74301-001	1	1x1	Yes	Vertical	10/100BaseT	-40 to 85°C
			SS-7188VS-A-NF-50	1	1x1	No	Vertical	10/100BaseT	-40 to 85°C
			SS-748802SC5-YG-PG4-BZ	2	1x2	Yes	Tab Down	10/100BaseT	-40 to 85°C
			SS71800-035F	2	1x2	No	Tab Down	10/100BaseT	-40 to 85°C
			SS-748804SC5-YG-PG4-BZ	4	1x4	Yes	Tab Down	10/100BaseT	-40 to 85°C
			SS71800-041F	4	1x4	No	Tab Down	10/100BaseT	-40 to 85°C
			SS-74500-029	2	2x1	Yes	Stacked	10/100BaseT	-40 to 85°C
			SS-73100-082	2	2x1	No	Stacked	10/100BaseT	-40 to 85°C
			SS-74500-020	4	2x2	Yes	Stacked	10/100BaseT	-40 to 85°C
			SS-7388H22S-PG4-AC-50	4	2x2	No	Stacked	10/100BaseT	-40 to 85°C
			SS-74500-024	8	2x4	Yes	Stacked	10/100BaseT	-40 to 85°C
			SS-73100-073	8	2x4	No	Stacked	10/100BaseT	-40 to 85°C
			SS-74500-028	12	2x6	Yes	Stacked	10/100BaseT	-40 to 85°C
			SS73100-046F	12	2x6	No	Stacked	10/100BaseT	-40 to 85°C
			SS-74500-022	16	2x8	Yes	Stacked	10/100BaseT	-40 to 85°C
			SS73100-047F	16	2x8	No	Stacked	10/100BaseT	-40 to 85°C

10/100 PHYs (continued)

IC Series	Part Numbers				Port Config	LEDs	Port Orientation	Application	Operating Temp
	Bel Magnetic Solutions	No. of Ports	Stewart Connector	No. of Ports					
BCM59101	S558-5500-25-F	1	SS-7488SC5-GG-PG4-BA	1	1x1	Yes	Tab Down	10/100BaseT PoE	0 to 70°C
			SS-700810S-A-PG4-BA	1	1x1	No	Tab Down	10/100BaseT PoE	0 to 70°C
			SS-74301-001	1	1x1	Yes	Vertical	10/100BaseT PoE	0 to 70°C
			SS-7188VS-A-NF-50	1	1x1	No	Vertical	10/100BaseT PoE	0 to 70°C
			SS-748802SC5-YG-PG4-BZ	2	1x2	Yes	Tab Down	10/100BaseT PoE	0 to 70°C
			SS71800-035F	2	1x2	No	Tab Down	10/100BaseT PoE	0 to 70°C
			SS-748804SC5-YG-PG4-BZ	4	1x4	Yes	Tab Down	10/100BaseT PoE	0 to 70°C
			SS71800-041F	4	1x4	No	Tab Down	10/100BaseT PoE	0 to 70°C
			SS-74500-029	2	2x1	Yes	Stacked	10/100BaseT PoE	0 to 70°C
			SS-73100-082	2	2x1	No	Stacked	10/100BaseT PoE	0 to 70°C
			SS-74500-020	4	2x2	Yes	Stacked	10/100BaseT PoE	0 to 70°C
			SS-7388H22S-PG4-AC-50	4	2x2	No	Stacked	10/100BaseT PoE	0 to 70°C
			SS-74500-024	8	2x4	Yes	Stacked	10/100BaseT PoE	0 to 70°C
			SS-73100-073	8	2x4	No	Stacked	10/100BaseT PoE	0 to 70°C
			SS-74500-028	12	2x6	Yes	Stacked	10/100BaseT PoE	0 to 70°C
			SS73100-046F	12	2x6	No	Stacked	10/100BaseT PoE	0 to 70°C
			SS-74500-022	16	2x8	Yes	Stacked	10/100BaseT PoE	0 to 70°C
			SS73100-047F	16	2x8	No	Stacked	10/100BaseT PoE	0 to 70°C
BCM59103	S558-5500-67	1	SS-7488SC5-GG-PG4-BA	1	1x1	Yes	Tab Down	10/100BaseT PoE+	-40 to 85°C
			SS-700810S-A-PG4-BA	1	1x1	No	Tab Down	10/100BaseT PoE+	-40 to 85°C
			SS-74301-001	1	1x1	Yes	Vertical	10/100BaseT PoE+	-40 to 85°C
			SS-7188VS-A-NF-50	1	1x1	No	Vertical	10/100BaseT PoE+	-40 to 85°C
			SS-748802SC5-YG-PG4-BZ	2	1x2	Yes	Tab Down	10/100BaseT PoE+	-40 to 85°C
			SS71800-035F	2	1x2	No	Tab Down	10/100BaseT PoE+	-40 to 85°C
			SS-748804SC5-YG-PG4-BZ	4	1x4	Yes	Tab Down	10/100BaseT PoE+	-40 to 85°C
			SS71800-041F	4	1x4	No	Tab Down	10/100BaseT PoE+	-40 to 85°C
			SS-74500-029	2	2x1	Yes	Stacked	10/100BaseT PoE+	-40 to 85°C
			SS-73100-082	2	2x1	No	Stacked	10/100BaseT PoE+	-40 to 85°C
			SS-74500-020	4	2x2	Yes	Stacked	10/100BaseT PoE+	-40 to 85°C
			SS-7388H22S-PG4-AC-50	4	2x2	No	Stacked	10/100BaseT PoE+	-40 to 85°C
			SS-74500-024	8	2x4	Yes	Stacked	10/100BaseT PoE+	-40 to 85°C
			SS-73100-073	8	2x4	No	Stacked	10/100BaseT PoE+	-40 to 85°C
			SS-74500-028	12	2x6	Yes	Stacked	10/100BaseT PoE+	-40 to 85°C
			SS73100-046F	12	2x6	No	Stacked	10/100BaseT PoE+	-40 to 85°C
			SS-74500-022	16	2x8	Yes	Stacked	10/100BaseT PoE+	-40 to 85°C
			SS73100-047F	16	2x8	No	Stacked	10/100BaseT PoE+	-40 to 85°C

10/100/1000 PHYs

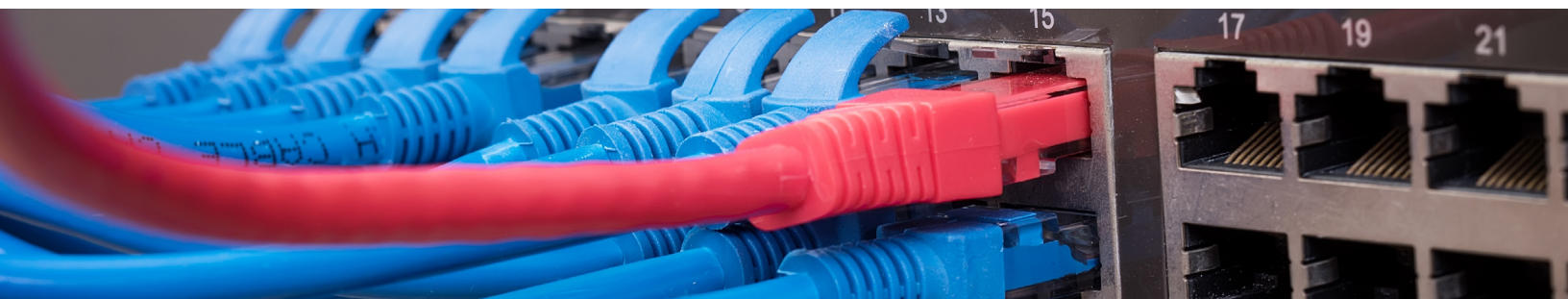
IC Series	Part Numbers				Port Config	LEDs	Port Orientation	Application	Operating Temp
	Bel Magnetic Solutions	No. of Ports	Stewart Connector	No. of Ports					
BCM5461 BCM54610 BCM54616S BCM5481 BCM5703 BCM5703S BCM5751	S558-5999-AB-F	1	SS-7488SC5-GG-PG4-BA	1	1x1	Yes	Tab Down	1000BaseT	-40 to 85°C
			SS-700810S-A-PG4-BA	1	1x1	No	Tab Down	1000BaseT	-40 to 85°C
			SS-74301-001	1	1x1	Yes	Vertical	1000BaseT	-40 to 85°C
			SS-7188VS-A-NF-50	1	1x1	No	Vertical	1000BaseT	-40 to 85°C
BCM5703S	S558-5999-M8-F S558-5999-T4-F	1	SS-7488SC5-GG-PG4-BA	1	1x1	Yes	Tab Down	1000BaseT	0 to 70°C
			SS-7188S-A-PG4-BA-50	1	1x1	No	Tab Down	1000BaseT	0 to 70°C
			SS-74301-001	1	1x1	Yes	Vertical	1000BaseT	0 to 70°C
			SS-7188VS-A-NF-50	1	1x1	No	Vertical	1000BaseT	0 to 70°C
BCM5705	S558-5999-T3-F	1	SS-7488SC5-GG-PG4-BA	1	1x1	Yes	Tab Down	1000BaseT	0 to 70°C
			SS-7188S-A-PG4-BA-50	1	1x1	No	Tab Down	1000BaseT	0 to 70°C
			SS-74301-001	1	1x1	Yes	Vertical	1000BaseT	0 to 70°C
			SS-7188VS-A-NF-50	1	1x1	No	Vertical	1000BaseT	0 to 70°C
BCM5721	S558-5500-68 S558-5500-76	1	SS-7488SC5-GG-PG4-BA	1	1x1	Yes	Tab Down	1000BaseT PoE+	-40 to 85°C
			SS-7188S-A-PG4-BA-50	1	1x1	No	Tab Down	1000BaseT PoE+	-40 to 85°C
			SS-74301-001	1	1x1	Yes	Vertical	1000BaseT PoE+	-40 to 85°C
			SS-7188VS-A-NF-50	1	1x1	No	Vertical	1000BaseT PoE+	-40 to 85°C

10/100/1000 PHYs

IC Series	Part Numbers				Port Config	LEDs	Port Orientation	Application	Operating Temp
	Bel Magnetic Solutions	No. of Ports	Stewart Connector	No. of Ports					
BCM54685 BCM54680 BCM54684 BCM5482 BCM5482S BCM5464 BCM54981 BCM54980 BCM5488S	S558-5999-BQ-F	2	SS-7488SC5-GG-PG4-BA	1	1x1	Yes	Tab Down	1000BaseT	-40 to 85°C
			SS-7188S-A-PG4-BA-50	1	1x1	No	Tab Down	1000BaseT	-40 to 85°C
			SS-74301-001	1	1x1	Yes	Vertical	1000BaseT	-40 to 85°C
			SS-7188VS-A-NF-50	1	1x1	No	Vertical	1000BaseT	-40 to 85°C
			SS-748802SC5-YG-PG4-BZ	2	1x2	Yes	Tab Down	1000BaseT	-40 to 85°C
			SS71800-035F	2	1x2	No	Tab Down	1000BaseT	-40 to 85°C
			SS-748804SC5-YG-PG4-BZ	4	1x4	Yes	Tab Down	1000BaseT	-40 to 85°C
			SS71800-041F	4	1x4	No	Tab Down	1000BaseT	-40 to 85°C
			SS-74500-029	2	2x1	Yes	Stacked	1000BaseT	-40 to 85°C
			SS-73100-082	2	2x1	No	Stacked	1000BaseT	-40 to 85°C
			SS-74500-020	4	2x2	Yes	Stacked	1000BaseT	-40 to 85°C
			SS-7388H22S-PG4-AC-50	4	2x2	No	Stacked	1000BaseT	-40 to 85°C
			SS-74500-024	8	2x4	Yes	Stacked	1000BaseT	-40 to 85°C
			SS-73100-073	8	2x4	No	Stacked	1000BaseT	-40 to 85°C
			SS-74500-028	12	2x6	Yes	Stacked	1000BaseT	-40 to 85°C
			SS73100-046F	12	2x6	No	Stacked	1000BaseT	-40 to 85°C

10/100/1000 PHYs (continued)

IC Series	Part Numbers				Port Config	LEDs	Port Orientation	Application	Operating Temp
	Bel Magnetic Solutions	No. of Ports	Stewart Connector	No. of Ports					
BCM54685 BCM54680 BCM54684 BCM5482 BCM5482S BCM5464 BCM54981 BCM54980 BCM5488S	S558-5999-CJ	2	SS-7488SC5-GG-PG4-BA	1	1x1	Yes	Tab Down	1000BaseT	0 to 70°C
			SS-7188S-A-PG4-BA-50	1	1x1	No	Tab Down	1000BaseT	0 to 70°C
			SS-74301-001	1	1x1	Yes	Vertical	1000BaseT	0 to 70°C
			SS-7188VS-A-NF-50	1	1x1	No	Vertical	1000BaseT	0 to 70°C
			SS-748802SC5-YG-PG4-BZ	2	1x2	Yes	Tab Down	1000BaseT	0 to 70°C
			SS71800-035F	2	1x2	No	Tab Down	1000BaseT	0 to 70°C
			SS-748804SC5-YG-PG4-BZ	4	1x4	Yes	Tab Down	1000BaseT	0 to 70°C
			SS71800-041F	4	1x4	No	Tab Down	1000BaseT	0 to 70°C
			SS-74500-029	2	2x1	Yes	Stacked	1000BaseT	0 to 70°C
			SS-73100-082	2	2x1	No	Stacked	1000BaseT	0 to 70°C
			SS-74500-020	4	2x2	Yes	Stacked	1000BaseT	0 to 70°C
			SS-7388H22S-PG4-AC-50	4	2x2	No	Stacked	1000BaseT	0 to 70°C
			SS-74500-024	8	2x4	Yes	Stacked	1000BaseT	0 to 70°C
			SS-73100-073	8	2x4	No	Stacked	1000BaseT	0 to 70°C
			SS-74500-028	12	2x6	Yes	Stacked	1000BaseT	0 to 70°C
			SS73100-046F	12	2x6	No	Stacked	1000BaseT	0 to 70°C
BCM5704	S558-5999-P3-F	1	SS-7488SC5-GG-PG4-BA	1	1x1	Yes	Tab Down	1000BaseT	0 to 70°C
			SS-7188S-A-PG4-BA-50	1	1x1	No	Tab Down	1000BaseT	0 to 70°C
			SS-74301-001	1	1x1	Yes	Vertical	1000BaseT	0 to 70°C
			SS-7188VS-A-NF-50	1	1x1	No	Vertical	1000BaseT	0 to 70°C
			SS-748802SC5-YG-PG4-BZ	2	1x2	Yes	Tab Down	1000BaseT	0 to 70°C
			SS71800-035F	2	1x2	No	Tab Down	1000BaseT	0 to 70°C
			SS-748804SC5-YG-PG4-BZ	4	1x4	Yes	Tab Down	1000BaseT	0 to 70°C
			SS71800-041F	4	1x4	No	Tab Down	1000BaseT	0 to 70°C
			SS-74500-029	2	2x1	Yes	Stacked	1000BaseT	0 to 70°C
			SS-73100-082	2	2x1	No	Stacked	1000BaseT	0 to 70°C
			SS-74500-020	4	2x2	Yes	Stacked	1000BaseT	0 to 70°C
			SS-7388H22S-PG4-AC-50	4	2x2	No	Stacked	1000BaseT	0 to 70°C
			SS-74500-024	8	2x4	Yes	Stacked	1000BaseT	0 to 70°C
			SS-73100-073	8	2x4	No	Stacked	1000BaseT	0 to 70°C
			SS-74500-028	12	2x6	Yes	Stacked	1000BaseT	0 to 70°C
			SS73100-046F	12	2x6	No	Stacked	1000BaseT	0 to 70°C





About Bel

Founded in 1949, Bel designs, manufactures and markets a broad array of products that power, protect and connect electronic circuits.

With over 65 years in the electronics industry, Bel has reliably demonstrated the ability to succeed in a variety of product areas across multiple industries. The company has a strong track record of technical innovation working with the engineering teams of market leaders.

Bel has consistently proven to be a valuable supplier to the foremost companies in its chosen industries by developing cost effective solutions for the challenges of new product development. By combining our strength in product design with our own specially designed manufacturing facilities, Bel has established itself as a formidable competitor on a global basis.



Bel Magnetic Solutions
12700 Stowe Drive, Suite 200
Poway, CA 92064 USA
+1 858.676.9650
techhelp@belf.com
belfuse.com/magnetic-solutions

Stewart Connector
11118 Susquehanna Trail South
Glen Rock, PA 17327-9199
+1 717.235.7512
techhelp@belf.com
belfuse.com/stewart-connector