

# Mini Cool Edge (MCIO) Connectors and Cable Assemblies >

The Mini Cool Edge (MCIO) product family delivers 4x, 8x, 16x and 20x options with high-speed 16, 32 and up to 64 Gbps data rates. MCIO cable assemblies meet PCIe standards in extremely flexible configurations.



## ADVANTAGES AND FEATURES

### Delivers improved flexibility in system design

with straight, right-angle and side-exit options for multiple plug types

### Offers extendable and customizable DS pairs for high-speed channel applications

by using sideband with differential signal (DS) pairs

### Prevents damage to the pins

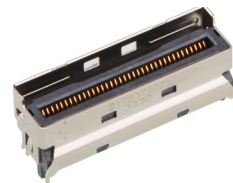
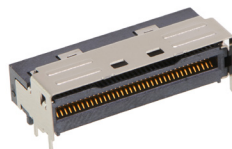
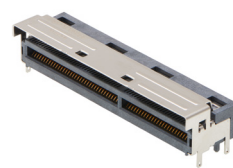
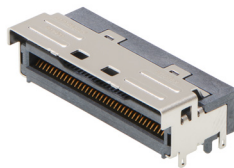
because of anti-slant, anti-reverse and pull-tab features with contact protection and enhanced mechanical design

Circuits	38 to 148
Pitch	0.60mm
Data Rates	16 Gbps, up to 64 Gbps

**Supports high-speed data transmission that meets PCIe industry standards**  
with the ability to deliver up to 64 Gbps

**Offers a wide range of pinout options, including 4, 8, 16 and 20 lanes**  
because of pinout flexibility

**Provides flexibility to pair with different wire gauge options, including 29, 30 and 32 AWG**  
as a result of loose pair and ribbon cable features



# Mini Cool Edge (MCIO) Connectors and Cable Assemblies >

## MARKETS AND APPLICATIONS

### Telecommunications

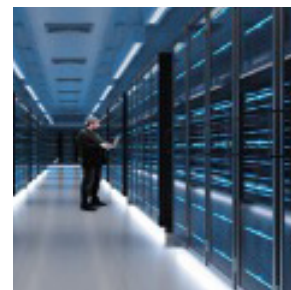
Routers  
Servers  
Switches  
Edge computing

### Power for Data Center

Data centers  
Storage racks  
Storage controllers  
RAIDS (Redundant Array of Independent Disks Storage)  
JBODS (Just a Bunch of Disks Storage)  
HBAS (Host Bus Adapter Services)  
Enterprise storage systems  
Servers and high-performance computing



Edge Computing



Data Centers

## SPECIFICATIONS

### Reference Information

Packaging: Carrier tape  
Designed in: Millimeters  
RoHS: Yes  
Halogen Free: Yes

### Electrical

Voltage (max.): 30.0V AC/contact  
Current (max.): 1.1A/contact  
Connector Contact Resistance: 20 milliohms max.  
Dielectric Withstanding Voltage: 300V DC  
Insulation Resistance (min.): 1,000 Megohms

### Mechanical

Mating Force (max.): 1.1 N/contact+10N  
Unmating Force (min.): 0.1 N/contact  
Durability (min.): 200 mating cycles

### Physical

Housing: Nylon  
Contact: Copper Alloy  
Contact Area: Gold over Nickel  
Solder Tail Area: Tin over Nickel  
Connector Ground Bar: Stainless Steel  
PCB Thickness: 1.57mm  
Operating Temperatures: -40 to +85°C

[www.molex.com](http://www.molex.com)