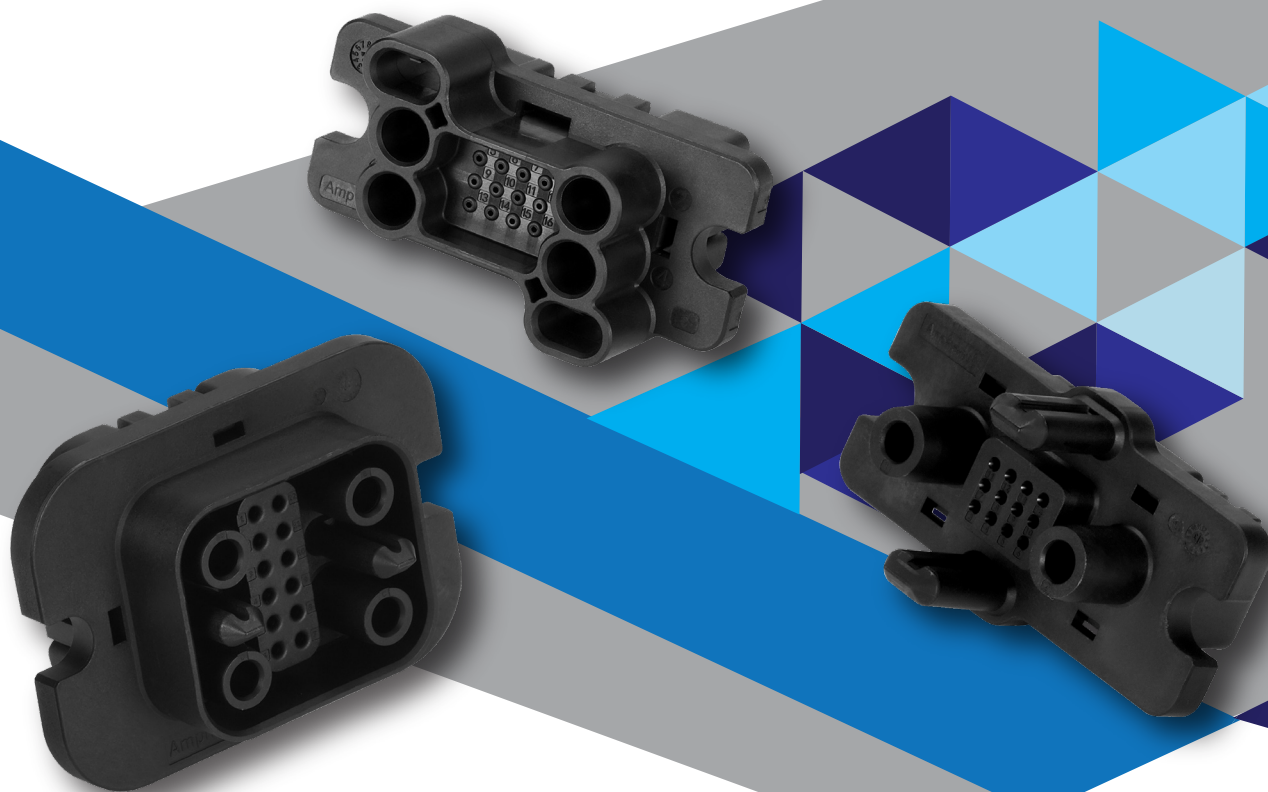




The Amphenol Industrial Floating Mate connector series is designed for reliable and efficient connections in demanding energy storage and industrial applications. With advanced RADSOX® technology and floating mount capabilities, these connectors provide high current ratings, robust mechanical performance, and flexibility in installation, making them an ideal choice for engineers and system integrators.

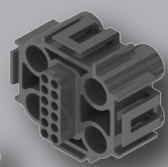


Market Focus

Energy Storage Systems








Power Your Innovations with Reliability



Amphenol
Industrial

Key Features

-  **High Current Capability:** RADSOK® technology power pins support up to 120A (4+12, 2+12) and 50A (4+12 Mini) of current, ensuring efficient power delivery.
-  **Safety and Reliability:** Finger-proof design and first-mate, last-mate functionality enhance safety during operation.
-  **Ease of Installation:** Integral guide pins correct misalignment, and optional floating mounts reduce stress during blind mating, providing ease of installation.
-  **Durability:** Rated for up to 200 mating cycles (2+12 version) and operational in temperatures ranging from -40°C to 125°C, these connectors are built to withstand harsh environments.
-  **Compliance:** UL/TUV certification ensures that the connectors meet stringent industry standards.

Product Series Comparison

	4+12	2+12	4+12 Mini
Voltage Rating	1000VDC/200VDC	1000VDC/200VDC	1500VDC/300VDC
Current Rating	120A/5A	120A/3A	65A/3A
Temperature Rise	45K	45K	45K
Mating Cycles	100	100	100
Floating Space	2.4mm	2.4mm	2.4mm
Flammability Rating	94 V0	94 V0	94 V0
Cable Specs (power)	25mm ² /16mm ²	16SQmm/25SQmm	10SQmm/6SQmm/4SQmm
Cable Specs (signal)	16-22 AWG	20-22 AWG	20-22 AWG