

# Wireless Bridge BR-500AC Setup Guide

Thank you for purchasing the Wireless Bridge BR-500AC  
BR-500AC is the wireless bridge which can add a wireless feature to non-wireless devices (10/100/1000BASE-T network devices). With 2.4GHz / 5GHz band support, non-wireless devices can easily be connected to a wireless network. Enterprise security feature will ensure safe and secure use of wireless communication at an office, factory, etc. where a higher security is required.

This Setup Guide explains how to setup and use BR-500AC in a wireless network.



silex  
technology

WA106530XX

(De) Die deutsche Version der Konfigurationsanleitung können Sie von unserer Website herunterladen.

(Fr) Il est possible de télécharger la version française de ce guide d'installation depuis notre page d'accueil.

(It) La versione italiana della guida all'installazione è scaricabile dalla nostra homepage.

(Es) Puede descargar la versión en español de la guía de configuración desde nuestra página principal.

(Pt) A versão em português do guia de instalação pode ser baixada de nossa página inicial.

URL : <https://www.silextechnology.com/>

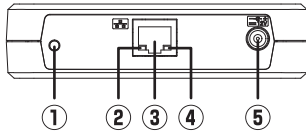
## Package Contents

Following items are bundled with BR-500AC.

- ☐ Wireless Bridge BR-500AC
- ☐ AC adaptor
- ☐ LAN cable
- ☐ Setup Guide (this document)
- ☐ GPL license notice (Distribution of source code licensed under the open source software license)

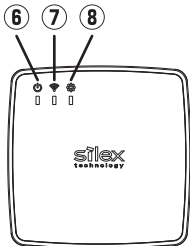
## Parts and Functions

### FRONT

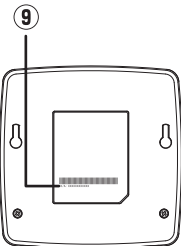


① Push switch	<b>Starts BR-500AC in Configuration Mode:</b> Press and hold the push switch for 5 sec while BR-500AC is active. <b>Configures BR-500AC using Smart Wireless Setup:</b> Press and hold the push switch for 10 sec while BR-500AC is active. <b>Resets BR-500AC to factory default settings:</b> Press and hold the push switch while turning on BR-500AC. Release the switch when the WLAN LED turns green and then to red.
② Link LED (Green/Orange)	<b>ON (Green):</b> Linked in wired LAN(1000BASE-T). <b>BLINK (Green):</b> Receiving packets in wired LAN(1000BASE-T). <b>ON (Orange):</b> Linked in wired LAN(100BASE-TX/10BASE-T). <b>BLINK (Orange):</b> Receiving packets in wired LAN(100BASE-TX/10BASE-T). <b>OFF:</b> Wired LAN is not connected.
③ LAN port	Connect the LAN cable.
④ Power LED (Yellow)	<b>ON (Yellow):</b> Powered on <b>OFF:</b> Powered off
⑤ Power connector	Connect the AC adapter.

### TOP



### BOTTOM

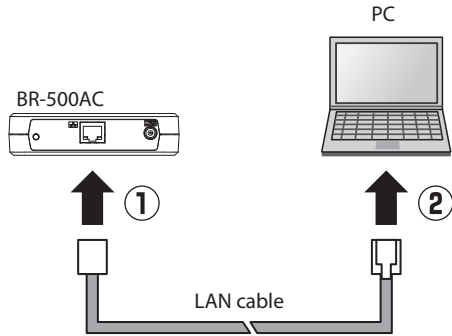


⑥ POWER LED (Green/Red/Orange)	<b>ON (Green):</b> Powered on <b>OFF:</b> Powered off
⑦ WLAN LED (Green/Red/Orange)	<b>ON (Green):</b> Running in Infrastructure mode. <b>BLINK(Green):</b> Processing setup using the Smart Wireless Setup. <b>OFF:</b> Wireless LAN is OFF. * Blinks together with STATUS LED when running in <b>Configuration Mode</b> . * Turns green and then to red during the initialization.
⑧ STATUS LED (Green)	<b>ON (Green):</b> AP is connected. <b>BLINK(Green):</b> Transferring data. <b>OFF:</b> AP is not connected. * Blinks together with WLAN LED when running in <b>Configuration Mode</b> .
⑨ MAC Address	MAC Address of BR-500AC

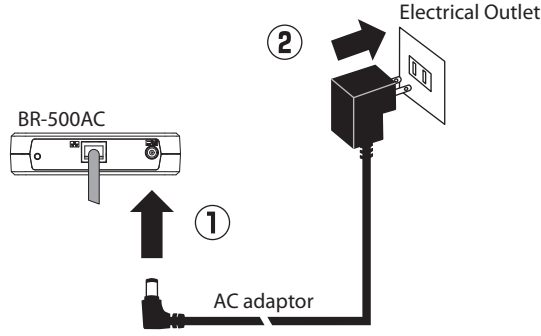
## Configuration Method 1 - Setup Using Configuration Mode

### Step1 Start BR-500AC in Configuration Mode

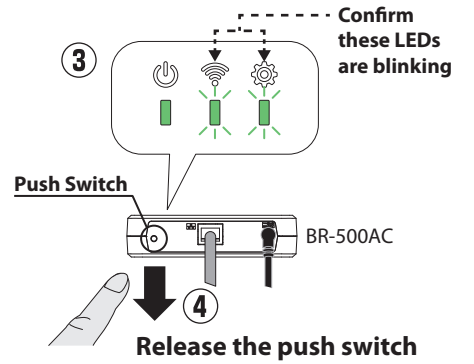
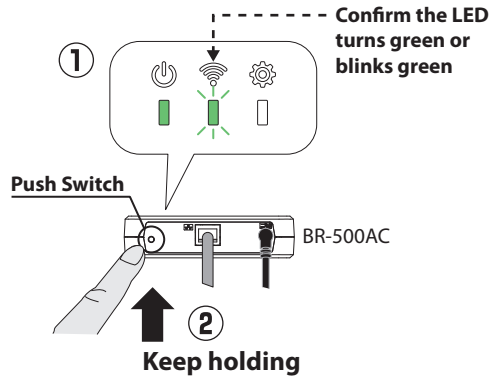
- 1 Connect BR-500AC to the PC using the LAN cable that came with BR-500AC.



- 2 Connect the AC adapter to BR-500AC, and the AC adapter's plug to an electrical outlet.



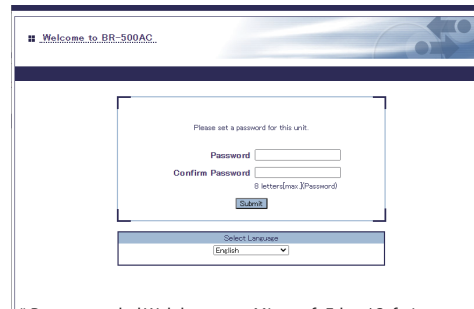
- 3 When the POWER LED turns green and the WLAN LED turns on or blinks, press and hold the push switch on the front of BR-500AC. In 5 seconds, the WLAN LED and STATUS LED will start to blink green together. Release the push switch then. BR-500AC will start running in the Configuration Mode and be ready to configure from the PC that has been connected to BR-500AC via a LAN cable.



\* If wireless LAN is enabled on your PC, please disable it.

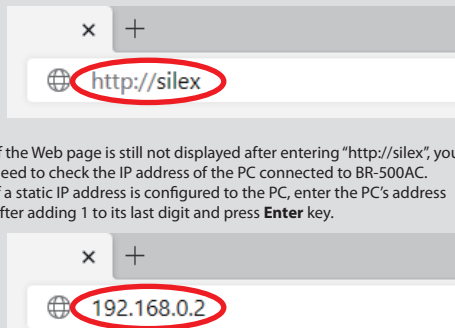
### Step2 Setup

- 1 The Web browser is started and the password configuration page of BR-500AC is displayed. Enter the password to set for BR-500AC and click **Submit**.



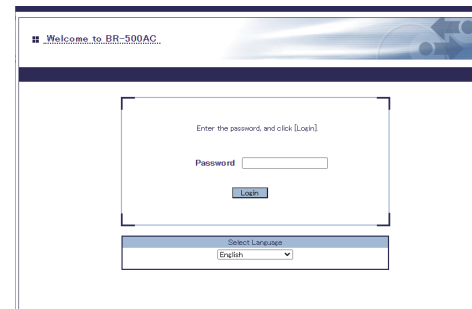
\* Recommended Web browsers: Microsoft Edge / Safari  
\* The login password configuration page is displayed only when BR-500AC is configured for the first time.

\* If the Web page is not displayed, enter "http://silex" in the address bar of the Web browser and press the **Enter** key.

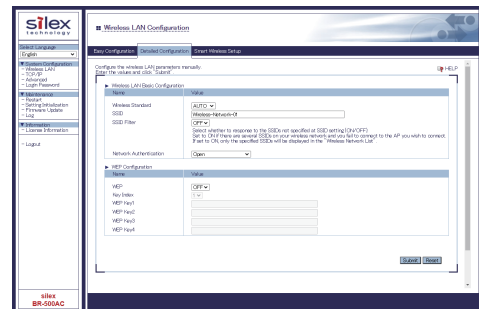


\* If the Web page is still not displayed after entering "http://silex", you need to check the IP address of the PC connected to BR-500AC. If a static IP address is configured to the PC, enter the PC's address after adding 1 to its last digit and press **Enter** key.

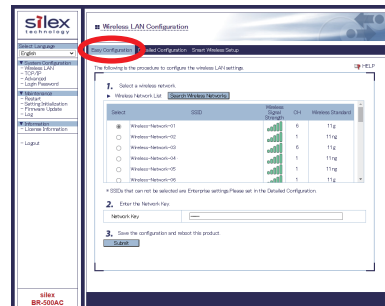
- 2 Enter the login password you have configured and click **Login**.



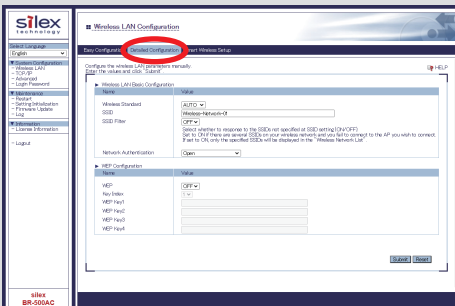
- 3 The Web page of BR-500AC is displayed.



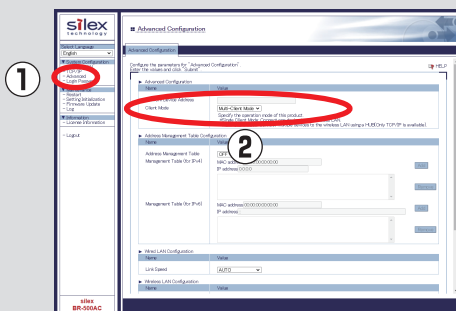
- 4 Click **Easy Configuration** at the top of the page. Select the destination network from **Wireless Network List** and enter the WEP Key or Shared Key for **Network Key**. Click **Submit** when finished.



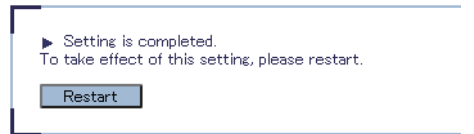
\* If the destination network is not displayed in the **Wireless Network List**, click **Detailed Configuration** at the top of the page. In the page displayed, enter the wireless settings of the network that you wish to connect BR-500AC to, and click the **Submit** button. Refer to the HELP for details on each setting.



\* To connect multiple network devices using an Ethernet HUB, click **Advanced** and select **Multi-Client Mode** for **Client Mode**.



- 5 When the confirmation message is displayed, click **Restart** to restart BR-500AC. The configuration has now been completed.

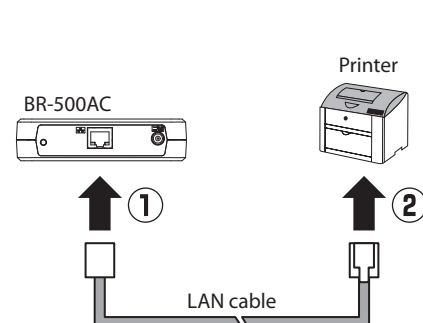


- 6 To give a wireless feature to the same PC (the one you have been using for configuration), please restart the PC. To give a wireless feature to the other device, turn off both BR-500AC and the PC, and remove BR-500AC from the PC. Refer to **Step3** to connect BR-500AC to the network device using a LAN cable.

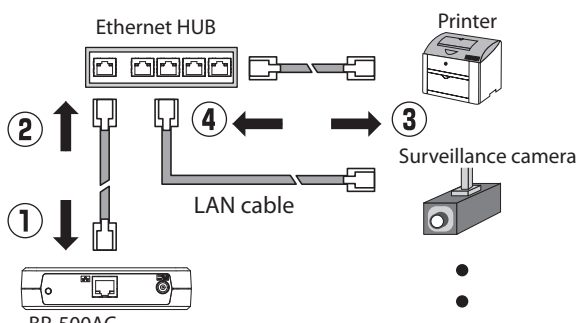
## Step3 Connect BR-500AC to the network device you wish to use wirelessly

- 1 Turn off the network device that you wish to use wirelessly and connect it to BR-500AC using the LAN cable.

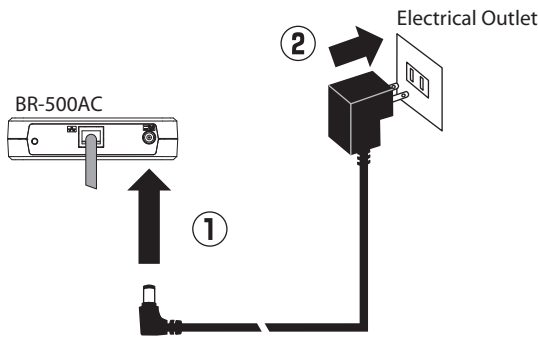
### Sample connection in Single Client Mode



### Sample connection in Multi-Client Mode



- 2 Connect the AC adapter to BR-500AC and the AC adapter's plug to the electrical outlet.



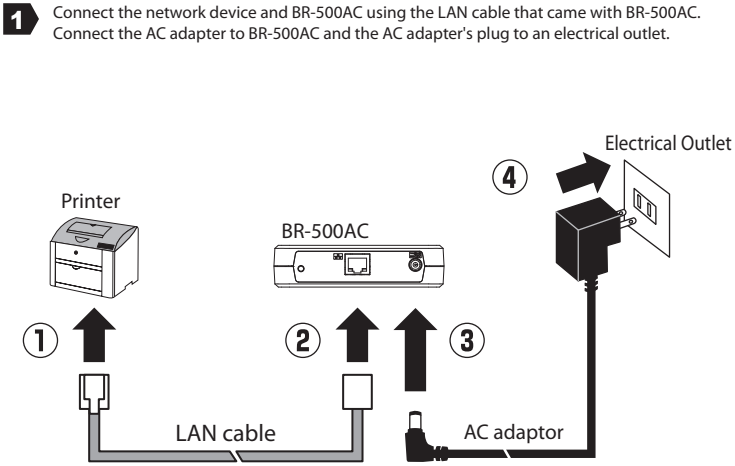
\* Some network devices require additional network settings. In such cases, refer to the manual that came with the network device.  
\* When turning on BR-500AC and network devices, be sure to turn on BR-500AC first. Do not press the push switch then.

Configuration Method 2 - Easy Configuration Using Smart Wireless Setup

BR-500AC allows you to configure its wireless settings easily using a push switch if your wireless router supports WPS (Wi-Fi Protected Setup). How to configure wireless settings using the push switch is explained.

NOTE

- For wireless configuration using WPS, your wireless router must support WPS. Make sure that your wireless router supports WPS and is turned on in your environment.
- During this configuration, please temporarily move BR-500AC closer to your wireless router to make it easier for both devices to communicate.
- WPS may need to be enabled manually on your wireless router. For details, refer to the operation manual that came with your wireless router.
- If a security feature such as MAC Address filtering is enabled on your wireless router, disable it temporarily so that BR-500AC can communicate with your wireless router.
- If you plan to connect two or more network devices to BR-500AC using an Ethernet Hub, please go back to **Configuration Method 1 - Setup Using Configuration Mode**. The **Client Mode** can be configured only when BR-500AC is running in **Configuration Mode**.



2 Turn on the network device connected to BR-500AC.

- \* Some network devices require additional network settings. In such cases, refer to the manual that came with the network device.
- \* When turning on BR-500AC and network devices, be sure to turn on BR-500AC first. Do not press the push switch then.

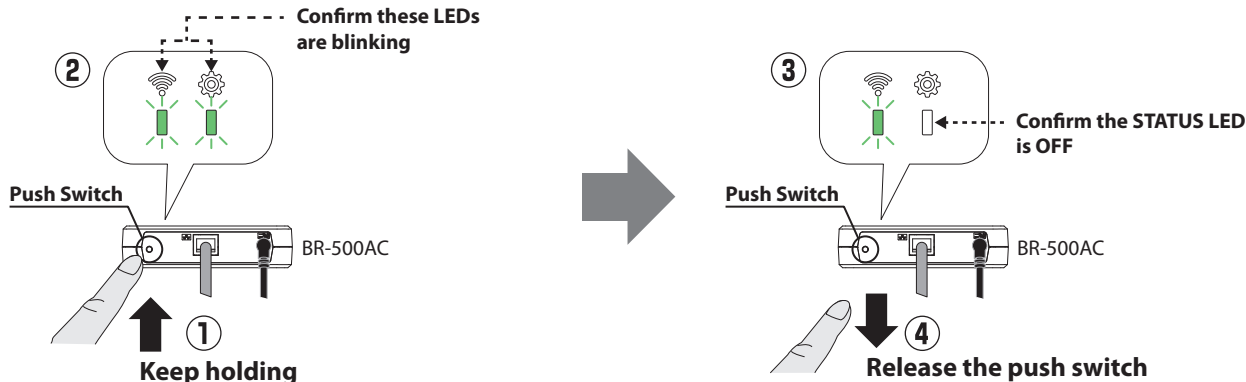
3 Press the WPS button on your wireless router. Confirm that your wireless router is waiting for wireless connection.



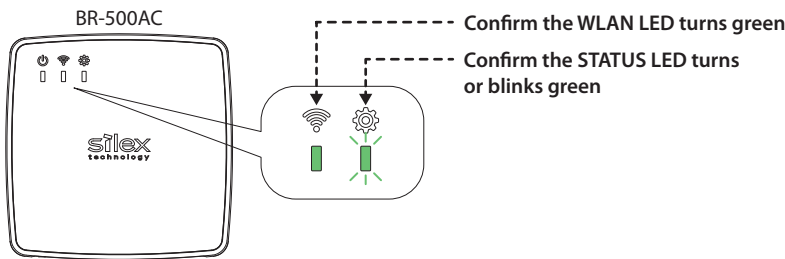
Wireless Router

- The name, position and shape of the WPS button will differ depending on your wireless router. For details, refer to the operation manual that came with your wireless router.
- Please use only one wireless router. If two or more routers are waiting for wireless connections, BR-500AC will not be able to connect properly.

4 Press and hold the push switch at the front of BR-500AC. The WLAN LED and STATUS LED will start to blink green together. In 5 seconds, the WLAN LED will continue to blink while the STATUS LED will turn off. Release the push switch then.



5 BR-500AC will start to communicate with your wireless router. When the wireless configuration is successfully completed, the WLAN LED turns green and the STATUS LED turns or blinks green.



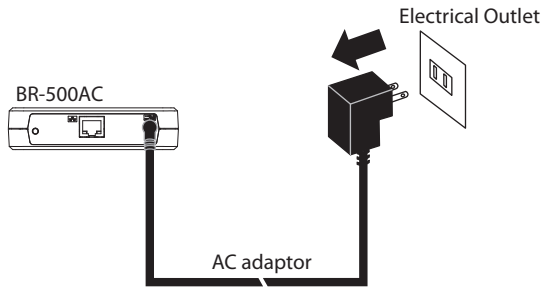
- It may take a while to complete the wireless configuration depending on your environment (up to 2 min).

\*When wireless configuration has failed, the WLAN LED will flash rapidly. Read the notes above and start from 3 again.

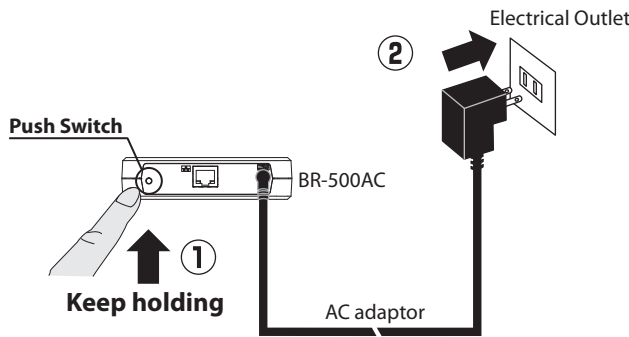
Factory Default Configuration

How to reset BR-500AC to the factory default settings is explained.

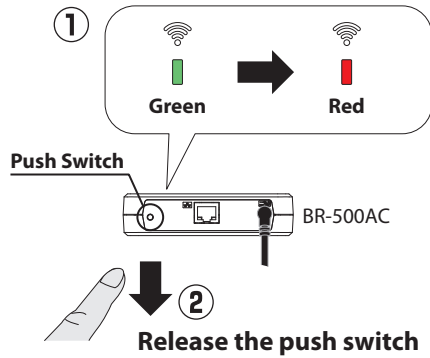
1 Disconnect the AC plug of BR-500AC from the electrical outlet.



2 While reconnecting the AC plug to the outlet, press and hold the push switch at the front of BR-500AC. Keep holding it.



3 When the WLAN LED turns green and then to red, release the push switch. The factory default configuration begins. After the factory default configuraton is completed, BR-500AC will restart.



How to Download User's Manual

The User's Manual can be downloaded from our website.

1 Access the website below:

URL: <https://www.silextechnology.com/>

2 Go to the **Support** page and download the User's Manual.

Product Name	BR-500AC
User's Manual	BR-500AC User's Manual

What's AMC Manager®?

AMC Manager® is an integrated device management software that can monitor and configure the Silex products remotely over an IP network. If AMC Manager® is used, the operating status of BR-500AC units can be checked in a list view. There are two versions of AMC Manager®; the one is AMC Manager Free (free version) and the other one is AMC Manager (non-free version).

- To use AMC Manager (non-free version), a license key needs to be purchased.
- Please contact Silex Technology to purchase a license key.

AMC Manager® can be downloaded from the Silex Technology's website.

How to Download AMC Manager®

AMC Manager® can be downloaded from the Silex Technology's website. Access the URL below to download it.

<https://www.silextechnology.com/>

1 When the website is displayed, click **Support** from the top menu.

2 Click **Software Download**.

3 In the **Software Download** page, click **AMC Manager®**.

4 Download AMC Manager®.

Trademarks

- AMC Manager® is a registered trademark of Silex Technology.
- Wi-Fi Protected Setup(WPS) is a trademark of Wi-Fi Alliance.
- Windows and Microsoft Edge are trademarks or registered trademarks of Microsoft Corporation in the United States and/or other countries.
- Safari is trademarks of Apple Inc., registered in the United States and other countries.
- Other company names and product names contained in this document are trademarks or registered trademarks of their respective companies.

Customer Support Center

Silex Technology, Inc. will support you by e-mail and phone to solve your problems.

Customer Support Center information

	Phone	E-mail
USA	+1-657-218-5199	support@silexamerica.com
Europe	+49-2154-88967-0	support@silexeurope.com