

The top half of the image features a dark background with a complex, abstract pattern of overlapping hexagons and interconnected nodes. The nodes are represented by small circles in shades of purple and blue, connected by thin lines. The BIVAR logo is prominently displayed in the upper left corner in a bold, white, sans-serif font.

BIVAR

PRODUCT CATALOG

www.bivar.com

TABLE OF CONTENTS

**Clear, Efficient,
User-focused Design** 01

Featured Products 02

IP Rated Light Pipes
Space Saving Light Pipes
ZeroLightBleed™ Light Pipes
Light Pipe Design Kits

Featured Light Pipes 04

Light Pipes 06

Rigid Panel Press-Fit
Rigid Board Mount
Flexible Systems

LED Emitters 10

PLCC
Surface Mount Chip
Through Hole
Ultraviolet UV

Modular Systems 12

Surface Area Light Guides 13

LED Indicators & Mounts 14

Hardware 15



LIGHT IS FUNDAMENTAL TO LIFE

Bivar believes that simply having light isn't enough. When lives and livelihoods depend on light, it must be delivered in ways that are clear, efficient and above all, focused on the person using it.

Bivar offers the most expansive line of Light Pipes to meet today's product design challenges. See how our decades of experience integrating LEDs and Light Pipes can help your product communicate more effectively!

WHAT'S NEW?



Enhanced PLP light pipes with IP54 ingress protection.



Space saving small footprint ZeroLightBleed™ adapter system.



SMTL3020

2.70mm x 2.00mm SMTL3020 SMD LED Top View Package.



SMTL3528

3.10mm x 2.80mm SMTL3528 SMD LED Top View Package.



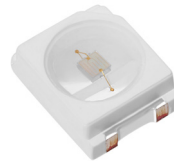
SMTLA5018

5.00mm x 1.80mm SMTLA5018 SMD Addressable LED Top View Package, RGBW.



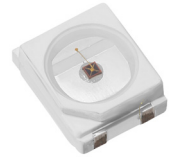
SMTLA5050

5.00mm x 5.00mm SMTLA5050 SMD Addressable LED Top View Package, RGB.



SMTL3528UV

3.10mm x 2.80mm SMTL3528 SMD LED Top View Package, UV.



SMTL3528IR

3.10mm x 2.80mm SMTL3528 SMD LED Top View Package, IR.

Flexible Light Pipe System Configurator



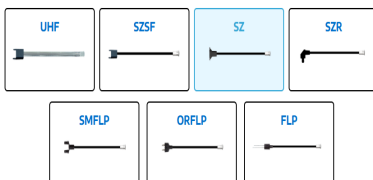
Adapter Type Optical Fiber Length Lens Size
Adapter End Color Wavelength Optical Fiber Color Lens Color
Optical Fiber Diameter

Clear Selection

Repeat within Series

View Part Number

Can't find what you're looking for or do you need something more specific?
[Contact New Design Support](#)



DESIGN SMARTER

Bivar's Flexible Light Pipe System Configurator makes it fast and straightforward to design a system that fits your application. Choose from available adapter, LED color, length, and lens options, then generate a system part number and access product specs in minutes—streamlining your design process.

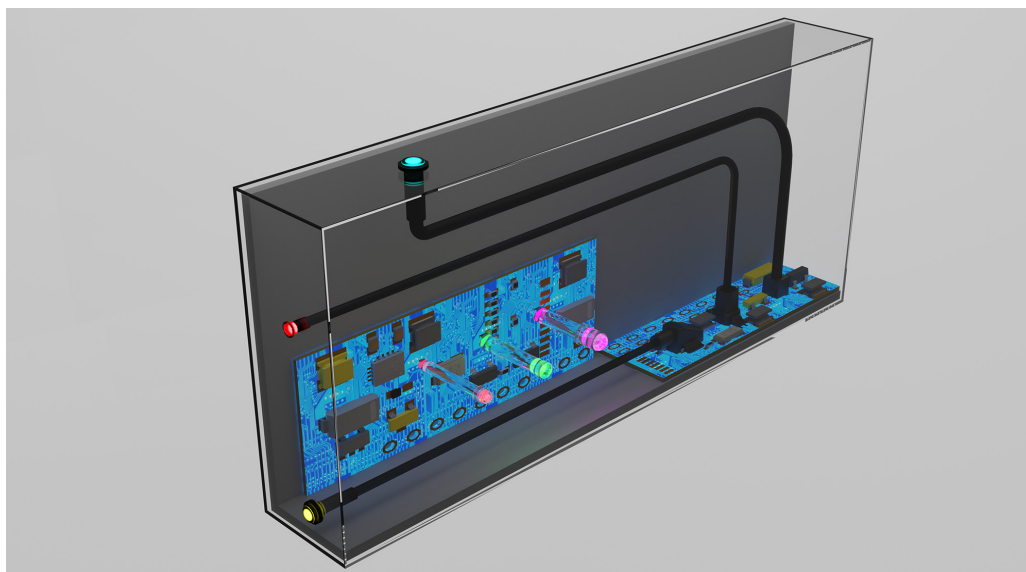
TRY CONFIGURATOR

IP Rated Light Pipes



When rugged and harsh environments are your game - Bivar has the tough players to match! IP Rated Products are key to keeping your application thriving in conditions that would make others cringe. With decades of experience, Bivar has IP Rated solutions that are well known in the industry. Find out how Bivar's IP Rated light pipes can protect your design.

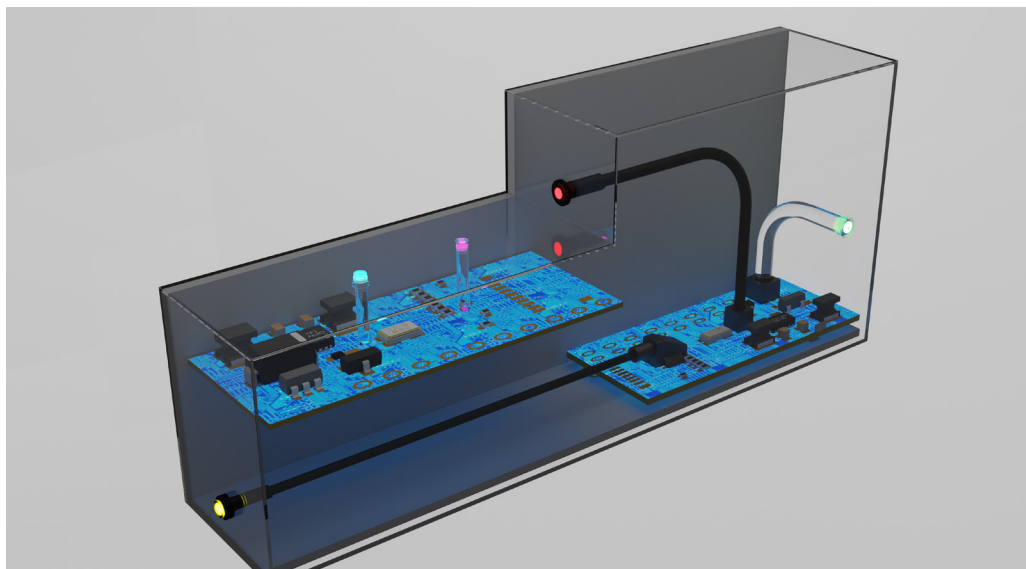
<https://www.bivar.com/ip-rated-light-pipes/>



Space Saving Light Pipes

When space is tight, Bivar light pipes step in to deliver. Designed to solve modern application challenges, our innovative light pipes support a wide range of scenarios from crowded PCBs and low-profile assemblies to short-distance, high-temperature environments, IP-rated requirements, and flush-mount designs for compact devices.

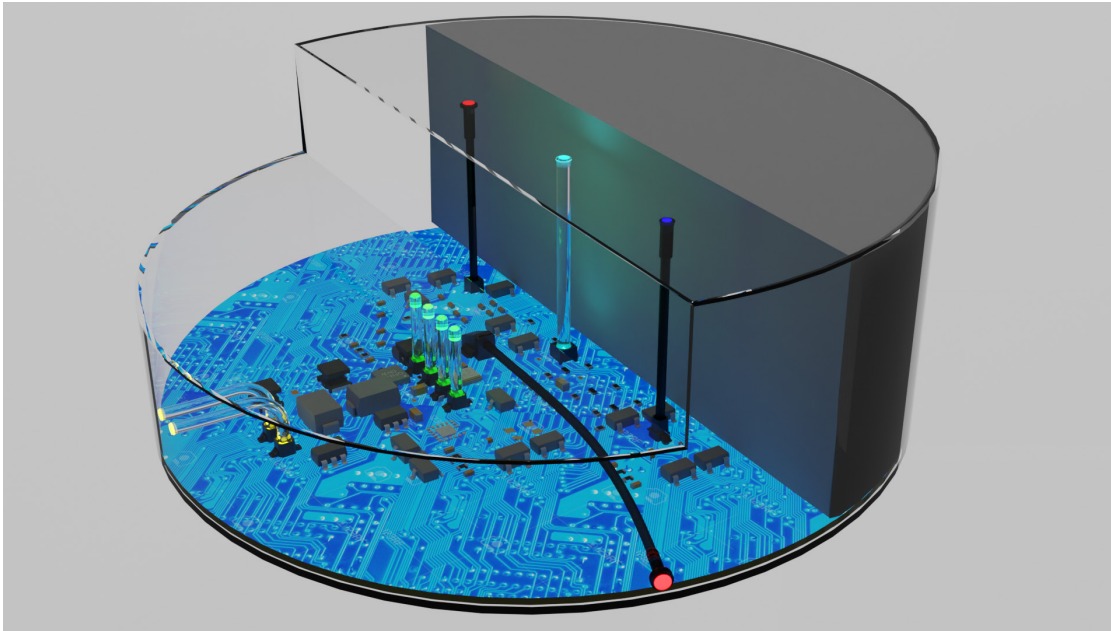
www.bivar.com/space-saving-light-pipes/



ZeroLightBleed™ Light Pipes

Bivar is the originator of ZeroLightBleed™ technology, offering the most expansive line of Light Pipes to meet today's design challenges. The Bivar engineering team has decades of aggregate experience integrating LEDs and Light Pipes into product designs. Find out how Light Pipes can help you communicate more effectively in your next design.

<https://www.bivar.com/zerolightbleed-light-pipes/>

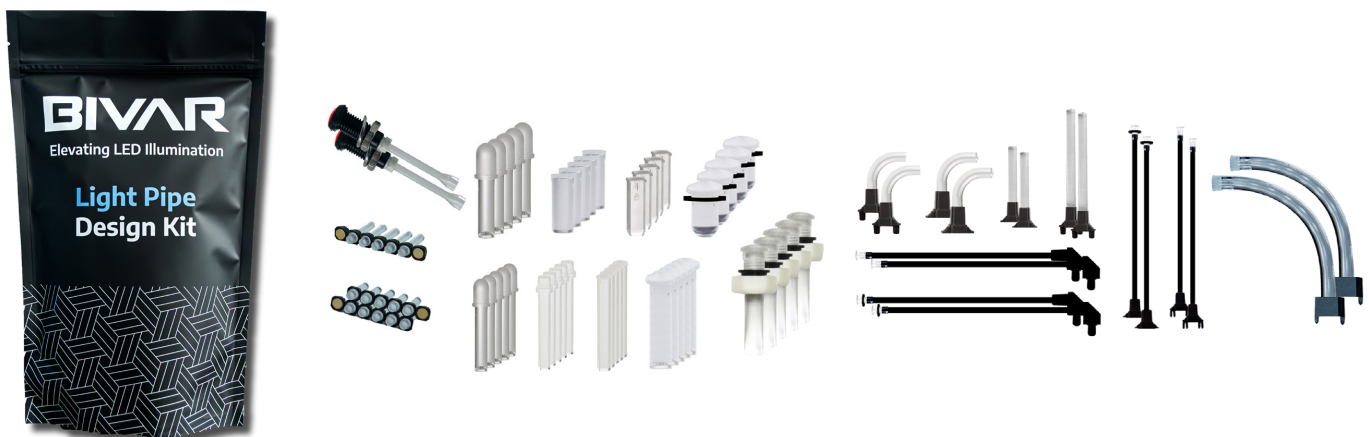


Light Pipe Design Kits

Designing a product can be complex, but Bivar's specialized design kits make it easier—and more fun!

Tailored for panel mount or board mount designs, each kit includes a selection of our most popular light pipes, giving you the tools to explore, experiment, and bring your ideas to life. Let's light the way to your next great design!

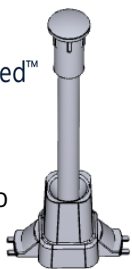
www.bivar.com/design-kits/



FEATURED PRODUCTS

SZ ZeroLightBleed™

ZeroLightBleed™
Flexible Light Pipe
Adapter System. Also
available in IP54.



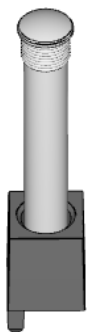
SZSF ZeroLightBleed™

Small footprint
ZeroLightBleed™
Flexible Light Pipe
Adapter System. Also
available in IP54.



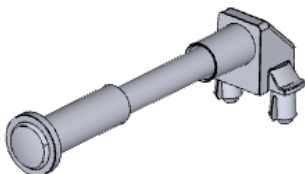
UHF ZeroLightBleed™

Silicone Flexible
Light Pipe with
ZeroLightBleed™
adapter and patent-
pending rib design
provides IP67 protection
without a need for nut,
washer, and gasket.



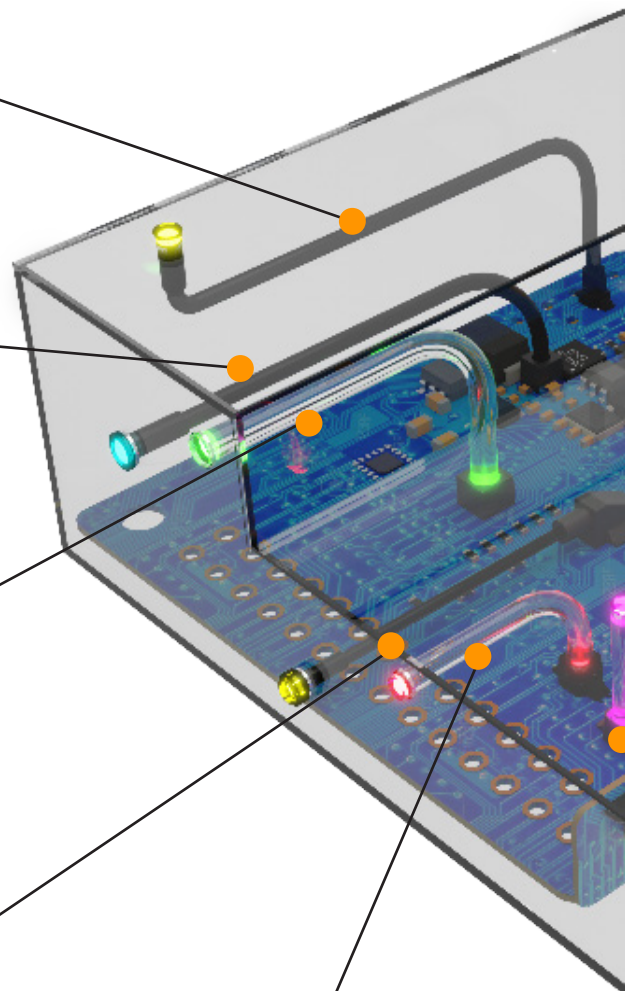
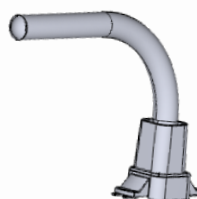
SZR ZeroLightBleed™

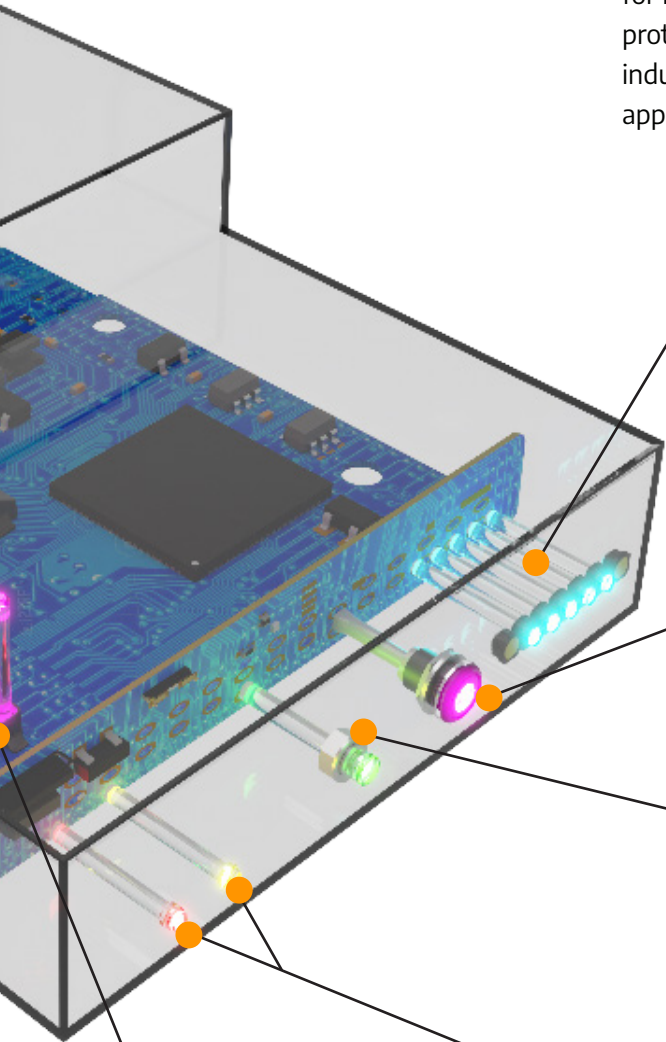
IP54 Right angle low
profile ZeroLightBleed
Flexible Light Pipe
Adapter System for tight,
constrained spaces.



LPR ZeroLightBleed™

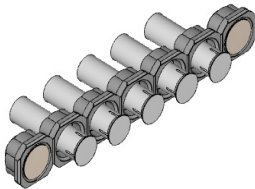
ZeroLightBleed™
surface mount
adapter with built-in
Bivar SMD LED and
right-angle light pipe.





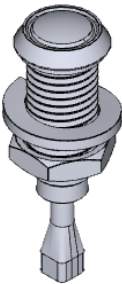
MLPS-B

IP67 heavy-duty threaded retention for maximum protection in industrial-grade applications.



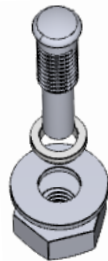
RHD

IP67 heavy-duty threaded retention for maximum protection in industrial-grade applications.



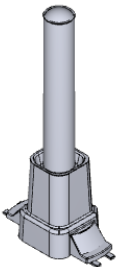
PLTR

IP67 threaded retention for maximum protection against dust and water.



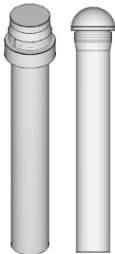
LPV ZeroLightBleed™

ZeroLightBleed™ surface mount adapter with built-in Bivar SMD LED and vertical light pipe.



GLP

Press-Fit Halo™ Rigid Light Pipe with one-piece installation IP54 protection.



IP Rated

II LIGHT PIPES

Rigid Panel Press-Fit

Take a look at Bivar's Panel Press-Fit light pipes. When you need a short-distance light pipe that presses securely into your panel, hovering as close as possible to SMD LED without touching, Bivar has you covered.



GLP

Enhanced PLP light pipes with IP54 ingress protection for rugged environment applications.



MLPS-B

Light Pipe Positioning Tray provides precise alignment and enhanced support, while increasing installation efficiency.



RHD

IP67 heavy-duty threaded retention for maximum protection in industrial-grade applications.



SGLC

IP68 Rated Sealing Gasket Lens Cap designed to provide ingress protection to LED status indication.



PLTR

IP67 threaded retention for maximum protection against dust and water.



PLPC

Countersink flush mount design for smooth panel appearance.



PLW5

Wide-capture lower body provides micro-lens to capture and emit more LED light.



PLPQ

Square shaped lens design provides a clean symmetrical alternative to round lens.



PLP1

Rear-mount 3mm lens size round shaped single station short distance light pipe.



PLP2

Front-mount 3mm lens size round shaped single station short distance light pipe.



PLP5

Available in both front mount and rear mount, PLP5 is a 5mm lens size round shaped single station short distance light pipe.



Rigid Board Mount

Board Mount Rigid Light Pipes give you LED illumination exactly where you want it. Bivar offers a short-distance light pipe that can be mounted directly onto your PCB over an SMD LED.



LPV ZeroLightBleed™

ZeroLightBleed™ surface mount adapter with built-in Bivar SMD LED and vertical light pipe.



LPR ZeroLightBleed™

ZeroLightBleed™ surface mount adapter with built-in Bivar SMD LED and right-angle light pipe.



VLP

Rear-mount round or rectangular lens single station short distance light pipe.



SLP

Rear-mount 90° variable centerline round lens single station short distance right angle light pipe.



RLP

Multi-station single-level right-angle light pipe array for use with Bivar SMD LEDs.



LP

Two-level round lens single station short distance right angle light pipe.



BGLP

10 uniform segment LED display using clear PMMA sheet material.



PBLP

Unique rear-mount push-button light pipe for use with various right angle switches.

II LIGHT PIPES

Flexible Systems

Bivar offers LED illumination for your most customized needs. For longer distances that require mounting directly onto a PCB, choose the jacketed fiber optic light system.



UHF ZeroLightBleed™

Clear silicone flexible light pipe with ZeroLightBleed™ adapter and patent-pending rib design that seals and protects from ingress without a need for nut, washer, and gasket.



SZSF ZeroLightBleed™

Space saving small footprint ZeroLightBleed™ adapter system for Bivar SMD LED and Flexible Light Pipes.



SZR ZeroLightBleed™

Right angle low profile ZeroLightBleed™ adapter system for Bivar SMD LED and Flexible Light Pipes.



SZ ZeroLightBleed™

ZeroLightBleed™ adapter system for Bivar SMD LED and flexible light pipe. IP54 option available.



SMFLP

Board mount adapter system for Bivar SMD LED and flexible light pipe



SMTV01 System

Surface mount adapter system with built-in 0606 SMD LED



Optical Fiber/Lens Cap

Flexible optical fiber with attached lens for use with Bivar Flexible Light Pipe adapters. IP option available. Available in 3mm or 5mm front-mount lens size.



ORFLP System

Board mount adapter system with built-in Bivar 4-pin Through-Hole Superflux LED and Flexible Light Pipe.



FLP System

Board mount adapter with built-in Bivar Through-Hole LED and Flexible Light Pipe.



Flexible Light Pipe System Configurator



6.0 in. ▼

5.1mm IP54 ▼

2mm ▼

Diffused ▼

Clear Selection

Reselect within Series

View Part Number

Can't find what you're looking for or do you need something more specific?
[Contact New Design Support](#)

UHF



SZSF



SZ



SZR



SMFLP



ORFLP



FLP



Part Number: SZSF4-6.00-FSPD54

Lens Size:	5.1mm IP54
Lens Profile:	Low Profile Diffused
Panel Cutout:	Round
Lens Color:	Diffused
Retention:	Self-Retention
Optical Fiber Diameter:	3mm
Optical Fiber Length:	6.0 in.
Optical Fiber Color:	Black

Clear Selection

Reselect within Series



DataSheet

3D Model

Request Sample

Check Stock

LED EMITTERS

PLCC

Versatile single color & RGB PLCC LEDs are light pipe compatible for use in various rugged environment applications.



SMTL3020

2.70mm x 2.00mm SMTL3020
SMD LED Top View Package.



SMTL3528

3.10mm x 2.80mm SMTL3528
SMD LED Top View Package.



SMTLA5018

5.00mm x 1.80mm SMTLA5018
SMD Addressable LED Top
View Package, RGBW.



SMTLA5050

5.00mm x 5.00mm SMTLA5050
SMD Addressable LED Top
View Package, RGB.



SMS1105

PLCC2 SMD LED Side View
Low Profile Package.



SMTL2

PLCC2 SMD LED Top View
Low Profile Package.



SMTL4

PLCC4 SMD LED Top View Low
Profile Package.



SMTL6

PLCC6 SMD LED Top View
Low Profile Package.

Surface Mount Miniature

Industry standard high quality SMD LEDs for individual use or with Bivar Light Pipes.



SM0402

Ultra-miniature 0402 industry
standard SMD LED package.



SM0603

Miniature 0603 industry
standard SMD LED package.



SM0605

Miniature 0605 industry
standard SMD LED package.



SM0805

Miniature 0805 industry
standard SMD LED package.



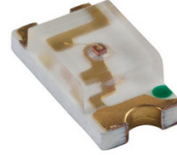
SM0807

Miniature 0807 industry standard SMD LED package.



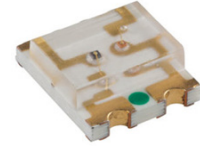
SM1204

Miniature 1204 industry standard right angle mounting SMD LED package.



SM1206

Miniature 1206 industry standard SMD LED package.



SM1210

Miniature 1210 industry standard SMD LED package.

Through Hole

Industry standard high quality Through Hole LEDs for individual use or with Bivar Light Pipes.



1.8MM

Industry standard 1.8mm small footprint package.



3MM (T-1)

Industry standard 3mm (T-1) package.



5MM (T-1 3/4)

Industry standard 5mm (T-1 3/4) package.



7.6MM Square

Industry standard 7.6mm square package.



Rectangular

Industry standard rectangular package.

II LEDS AND MODULAR SYSTEMS

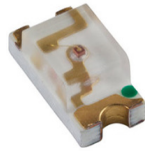
UV/IR

Industry standard high quality SMD and Through-Hole UV-A LEDs.



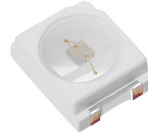
SM0603

Miniature 0603 industry standard SMD LED UV package.



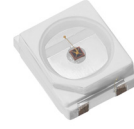
SM1206

Miniature 1206 industry standard SMD LED UV package.



SMTL3528UV

3.10mm x 2.80mm SMTL3528 SMD LED Top View Package, UV.



SMTL3528IR

3.10mm x 2.80mm SMTL3528 SMD LED Top View Package, IR.



UV3TZ

3mm (T-1) industry standard tight tolerance Through-Hole LED UV package.

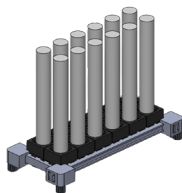


UV5TZ

5mm (T-1 3/4) industry standard tight tolerance Through-Hole LED UV package.

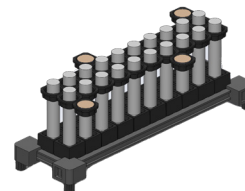
Modular Systems

Improves how your device communicates with users. The patent-pending configurable light pipe system offers precision bezel alignment, taking communication beyond what other solutions can offer.



MLPS-RT

The MLPS-RT Rail and Tower design combines an adjustable rail with ZeroLightBleed adapter technology resulting in a highly efficient light pipe system. The compact MLPS-RT PCB footprint saves valuable space while maximizing light output.



MLPS-RTB

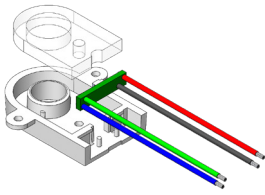
With Rail, Tower, and precision Alignment Bezel, MLPS-RTB, gives you the ultimate in modular light pipe system for device communication. It provides single part number convenience, along with ease of installation and the ability to personalize using Bivar's light pipe system configurator.

II SURFACE AREA LIGHT GUIDES

Light Guides

Surface Area Light Guides from Bivar are designed to bring the distinctive LED lighting seen in consumer and automotive applications to OEM enclosure, equipment, and device designs. These cutting-edge light guides combine light pipe technology, lensing, and control techniques to uniformly illuminate surface areas in a space-saving design.

Bivar's high reliability PLCC surface mount LEDs onboard ensure vibrant color output, attractive appearance, and long-lasting performance. With color-coding and functional effects such as flashing, sequential blinking, and patterns, these light guides offer eye-catching illumination that enhances information delivery while improving guidance and safety.



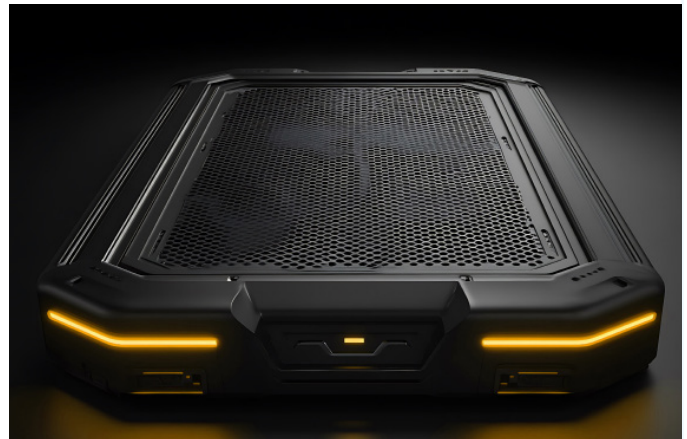
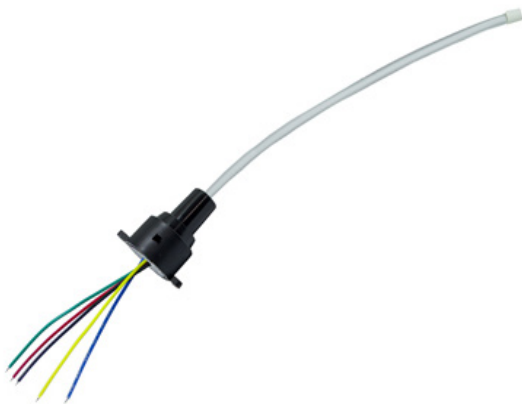
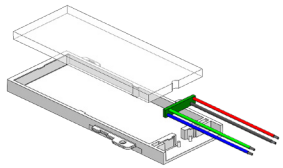
SAC

Circular shaped surface area light guides feature a high quality RGB light engine and are available in two sizes. SAC provides easy product installation with several mounting options including mounting screw and adhesive attachment.



SAR

Rectangular shaped surface area light guides feature a high quality RGB light engine and are available in two sizes. SAR provides easy product installation with several mounting options including snap, slide-in, mounting screw, and adhesive attachment.



SASG

Surface Area Side Glow Light Guides are designed for seamless integration near essential sensors and controls. They are ideal for applications that demand discreet yet effective LED edge side-lighting. Critical system status information can be relayed visually in real time, making these guides a crucial element for user interface design.

Panel and Circuit Board LED Indicators

Bivar has a large selection of panel mount indicators and circuit board indicators that can fit into your design requirement. Available in all type of sizes, colors, profiles, voltage, wavelengths, and more, check them out at our website today.



LED Mounts

If precision is what your design requires, Bivar has what you want in a large selection of panel mount clips and rings, including extruded and molded self-retaining LED mounts. Feeling extra exacting? Custom designs available!



Circuit Board Hardware

Got a bit of a challenge? Nope, not when you've got Bivar. We offer vertical or horizontal circuit board card guides for everything from basic to the most challenging applications and environments. PCB mounting options include everything from low profile to static sensitive and increased retention for those high vibration installations.



Component Hardware

It's like a bouncer for your circuit boards. Don't let vibration or electrical transmissions threaten the integrity of your circuit boards and components. Position and protect them with PCB Standoffs/Supports from Bivar. Our design accommodates standard screw sizes in firm-retaining and self-retaining options.





CONTACT US

Address: 4 Thomas Irvine, CA 92618

TEL: 1-800-767-3652

Web: www.bivar.com

E-Mail: sales@bivar.com

BIVAR