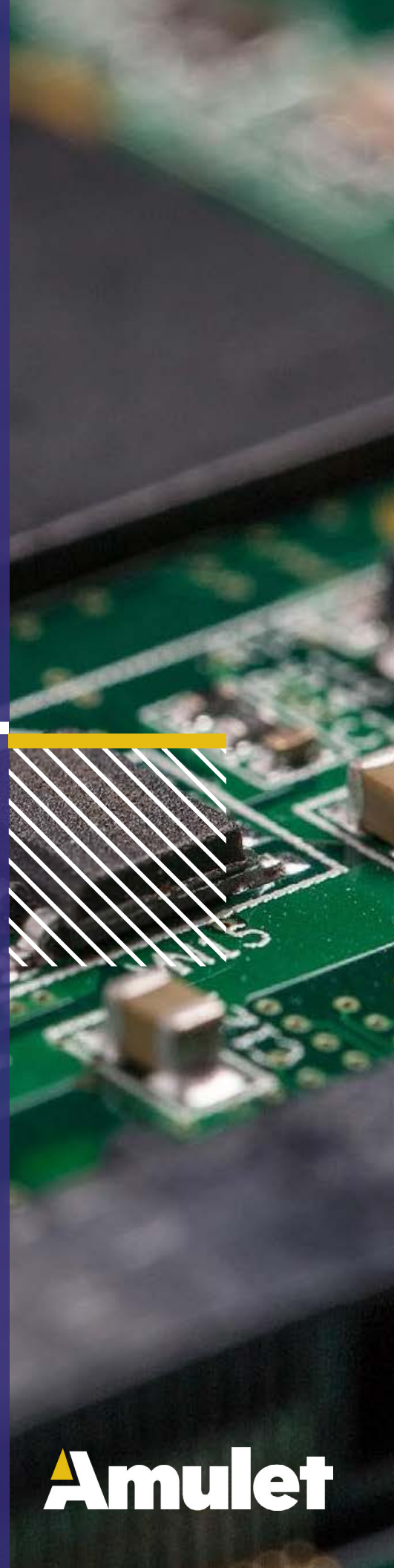


The Hidden Cost of Confusing Interfaces:

Unlock the Secret to User Adoption and Better Investments with Amulet Technologies



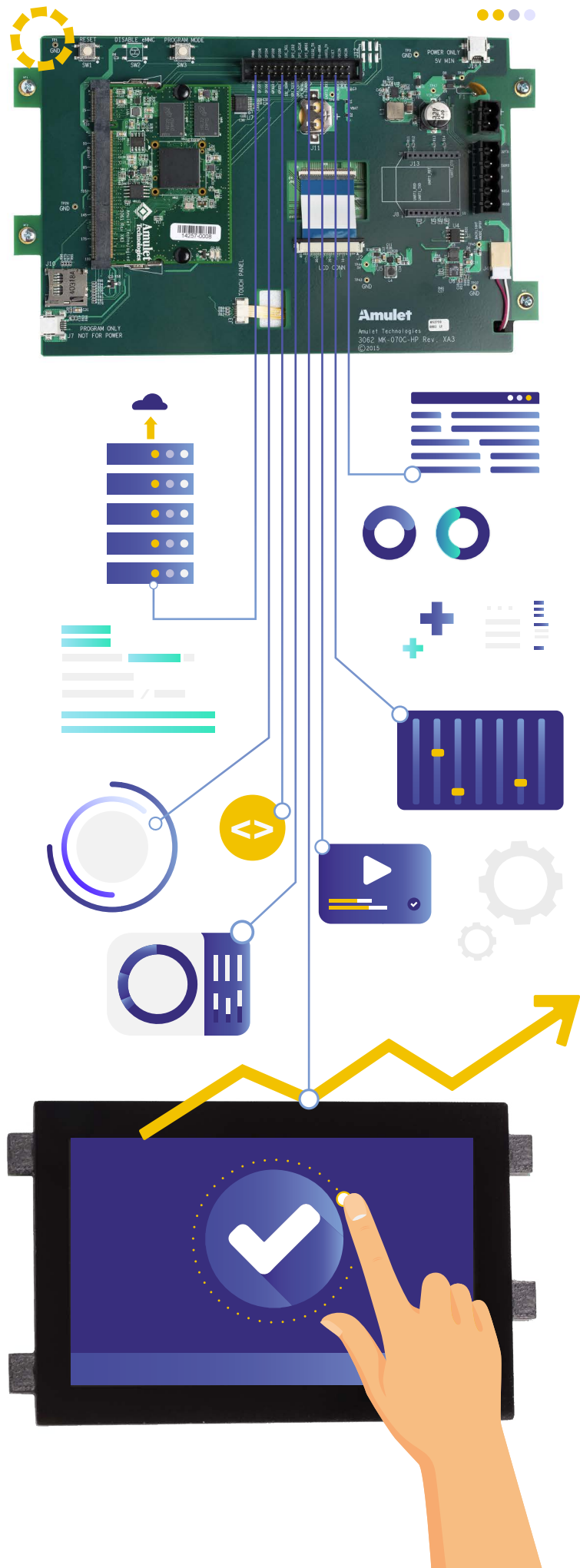
Amulet

You've poured countless hours and resources into crafting a product you truly believe in. The technology is rock-solid, the software is reliable, and you are confident it meets every technical standard. But then reality hits: customers are encountering confusion and frustration due to a cumbersome interface that fails to meet their needs. In this moment, it can feel as if all your efforts are slipping away. It's no longer just about the technology; it's about delivering an exceptional user experience that fosters customer loyalty. Without this, it can seem like your investments are being squandered. What you truly require is a product that operates seamlessly and engages users, ensuring they keep coming back.

At Amulet Technologies, we understand your frustration when products fail to connect with end users, which is why we ensure your technology doesn't just function—it engages the user and builds trust. We bridge the gap between embedded software and intuitive user-friendly interfaces, transforming your legacy products and creating new ones with usability as a core priority.

Amulet's Interactive Digital Display Solutions translates complexity into clarity, setting you apart from the competition and driving success.

This guide explores how **Amulet's Interactive Digital Display Solutions** can enhance product usability, ensuring your technology meets user expectations and fosters long-term trust.



The Problem

In today's competitive landscape, building real-time software that seamlessly interacts with users is essential. However, the process can often feel like constructing a road from two ends, only to find they don't meet in the middle. While the product may function correctly, a disjointed user experience can undermine its success.

Product managers often face two key challenges:

01

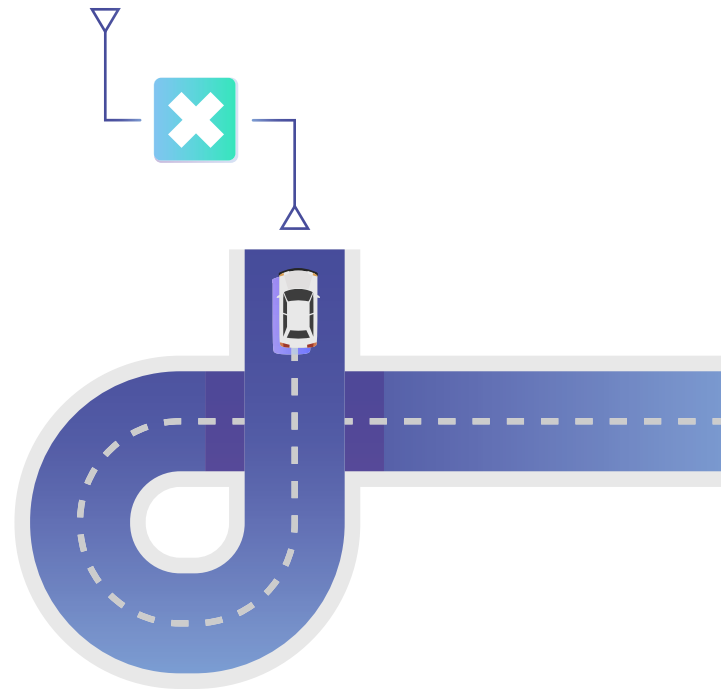
UI vs. UX

People often use the terms UI (User Interface) and UX (User Experience) interchangeably because they don't truly understand the difference between UI and UX, nor where UI starts and UX ends.

02

Reliance on Specmanship

A product can fulfill all requirements but still fail if it doesn't address the end-user, resulting in a disconnected and frustrating user experience.



A good UX design process starts in the middle to define how and where the roads of form and function meet. Without a strong focus on user experience, your product risks losing user trust and adoption. At Amulet, we ensure your product is not only operational but **intuitive, reliable, and trusted by users**—bridging the gap between functionality and user satisfaction.

Challenges in UI/UX and Embedded Systems Design

Integration Complexities: Combining device control and user interaction into your real-time software can feel like assembling a puzzle where the pieces don't quite fit, no matter how hard you try to make them align. This disconnect can lead to a confusing and frustrating user experience.

Time to Market and Cost: Rushed designs that prioritize functionality or aesthetics over UX often lead to costly post-launch fixes, delays in production, and longer training times for users.

User Confidence: When products are difficult to use, they erode trust and cause users to question the product's reliability, leading to poor adoption and negative feedback.

Rigid Systems: Early design decisions can lock teams into less flexible solutions, making it difficult to integrate new technologies or pivot when necessary.

Maintenance Headaches: Small changes in the user interface (UI) can disrupt real-time software, creating a fragile system where each update could cause a cascade of issues.



Impact on Business Operations

Costly Design Changes and Delays:

Complex interfaces often require unexpected design revisions, increasing manufacturing costs and pushing back production timelines. Additionally, these changes can cause significant certification delays, further extending time to market and increasing overall project expenses.


User Adoption Challenges:

A clunky UI slows user adoption and increases the need for training, resulting in lower efficiency and user frustration.

Scalability Issues:

Monolithic software designs make scaling difficult, leading to resource strain and unexpected costs.





The Solution: Amulet's Interactive Digital Display Solutions

Amulet's Interactive Digital Display Solutions offers a complete, integrated system that eliminates redundancies and enhances the user experience.

By bridging the gap between product development and user interface design, we help your developers to create products that not only work but also inspire trust and engagement.

Key features include:

01

Modular Platform

Simplifies system architecture, making development, maintenance, and scalability more manageable.

02

UI Authoring Software

Bridges the gap between visual design and software development, ensuring a cohesive user experience that aligns with your product's functionality.

03

Integrated Software and Hardware

Our Interactive Digital Displays integrate an application processor, UI framework, and communications interface onto the back of a touch panel display to give you everything you need to form the face of your product.

04

Design Services

Our 5-phase design approach begins with UX research and continually utilizes user feedback throughout the process to drive customer satisfaction and ensure product success.

Partnering with Amulet

When you partner with Amulet, **you gain a strategic ally** that helps you overcome the most critical challenges in developing smart interactive products that resonate with your customers.

With Amulet, you'll experience:

Accelerated Time to Market: Our integrated solutions speed up development, ensuring your product reaches the market faster.

Enhanced Performance and Reliability:

Amulet's Interactive Digital Display Solutions ensure your product works exceptionally well, building user trust and satisfaction.

Customization and Flexibility: Our solutions are designed to be adaptable, ensuring your product can evolve with market demands without requiring major overhauls.

Cost Savings: By reducing development and maintenance complexities, Amulet helps you stay competitive in an increasingly crowded marketplace.



Long-Term Advantages

Consistent UI Experience: Adherence to UX best practices ensures a seamless user experience across all devices, making your product easier to use and increasing customer satisfaction.

Future-Proofing: Our market-leading UI Authoring Platform and integrated services make it easy to upgrade and scale as needed, ensuring your product stays ahead of the competition.

Maximizing Customer Delivery: We complement your engineering expertise with our design services, ensuring your product delivers on both functionality and usability for the long term.



Customer Success Stories

Amulet Technologies has a **proven track record** of delivering transformative results.

By prioritizing user experience and simplifying complex systems, we've helped leading companies enhance their products, reduce costs, and improve efficiency. Here are a few success stories that show how partnering with Amulet has driven innovation and growth for our clients.



02

HVAC


The product installation process was cumbersome, costly, and prone to errors, which slowed the sales cycle by limiting the number of installations. Amulet's custom-developed touch HMI features intuitive diagnostic tools, streamlined site installations, minimized errors, and reduced field maintenance time. This led to lower deployment costs and a faster sales cycle.



01

Security Systems


The product had an outdated, clunky user interface that was impractical for languages with different alphabets and characters, such as Japanese. Amulet's solution delivered a modern, visually appealing graphical touch interface that was intuitive to navigate and fully supported all international character sets and icons. This enabled the customer to expand into new global markets, leading to a significant increase in sales.



03

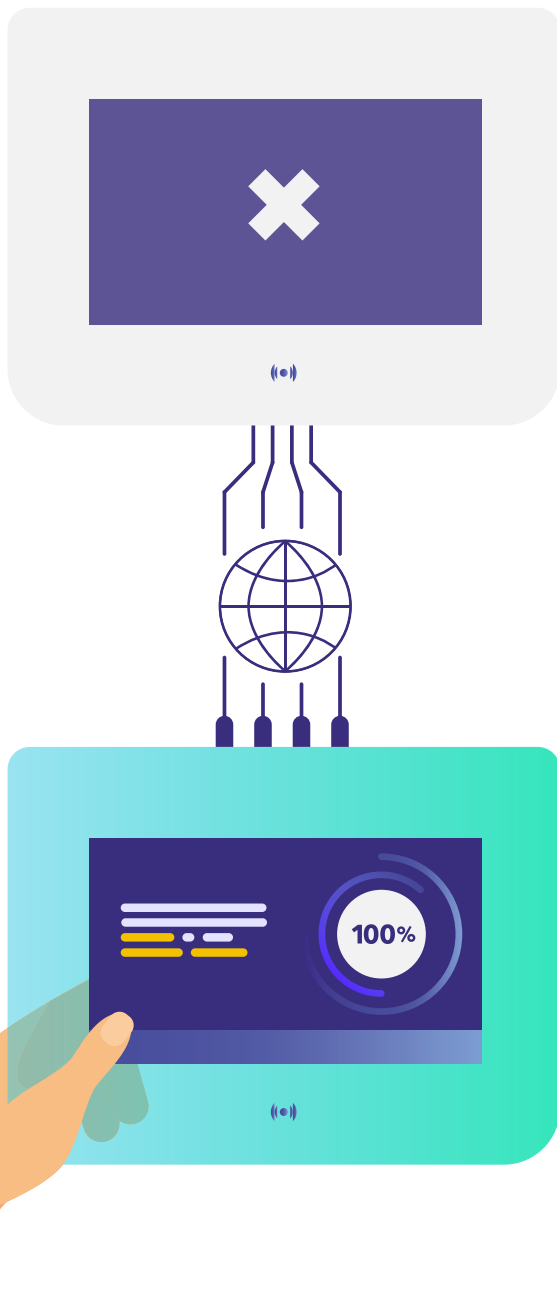
Medical Devices


Long development and approval cycles made it difficult to introduce new products. Amulet's solutions modernized the design of several legacy products with minimal impact on medical device recertifications, shortening product introduction cycles and helping the company stay ahead of its competitors, ultimately increasing market share.

Next Steps

Amulet's Interactive Digital Display Solutions address the most critical challenges in product development, from integration complexities to user adoption. Our approach ensures your products don't just meet industry standards—they set them.

Ready to **transform your UX** and achieve greater success in the market?



Download Your Buyer's Guide:

Discover how Amulet's solutions can transform your product development process.

Engage with a Design Expert:

Talk to us about creating innovative, user-centered Interactive Digital Display Solutions tailored to your needs.

Get a Quote.