

ULTRA-FIT POWER CONNECTORS

WIRE-TO-WIRE CAPABILITY

NPI ENHANCEMENT

JANUARY 2023 | GLOBAL RELEASE



creating connections for life

molex

ULTRA-FIT POWER CONNECTORS

WIRE-TO-WIRE CAPABILITY

With its unique keying design, Ultra-Fit Power Connectors offer up to 14.0A with a 3.50mm pitch to deliver high current capacity for wire-to-board and now wire-to-wire applications using the same amount of space that lower-current connectors occupy.

Key Product Information

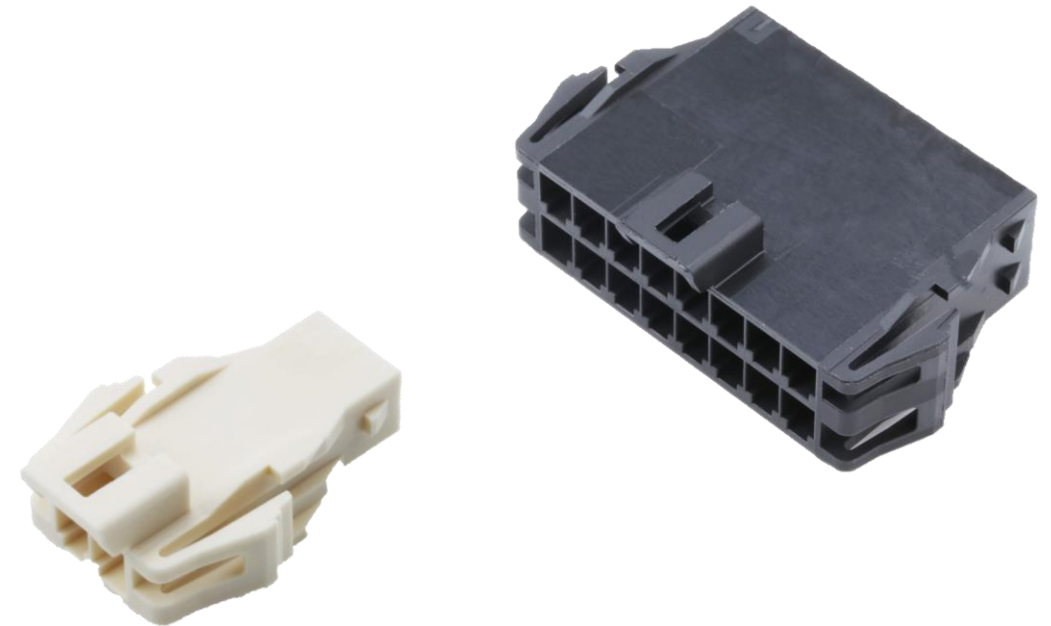
Series: 202569, 216945, 216946

Category: Power connectors

Current: Up to 14.0A

Pitch: 3.50mm

Wire AWG: 16 - 22



[View Product Landing Page](#)

ULTRA-FIT POWER CONNECTORS, 3.50MM PITCH

ADDING: WIRE-TO-WIRE CAPABILITY

Compactness

As part of the trend toward miniaturization, industries are challenged by space constraints in their applications.

Ultra-Fit Power Connectors have a current-dense design to save space without sacrificing current-carrying capability.

Ease of assembly

Some applications cause operator fatigue due to repetitive mating processes and large mating force requirements.

Ultra-Fit Power Connectors reduce mating force by 40% for more reliable assembly and reduced operator fatigue.

Terminal back-out prevention

When assembling connectors, terminal back-outs may occur, resulting in end-product failure.

Positive-lock housing and optional terminal position assurance (TPA) features of Ultra-Fit Power Connectors help ensure the terminal is fully seated and enable a reduction in terminal back-out issues.

MARKETS AND APPLICATIONS

Consumer

Refrigerators

Telecom/Networking

Hubs
Servers

Transportation

Infotainment
Interior

Lighting

Ballasts
Home Lighting Fixtures

Aerospace/Defense

C4ISR

Industrial

Food and Beverage
Assembly Line Equipment

Medical

Patient Care Equipment
Healthcare IT



Infotainment



Patient care equipment



Home appliance

PRODUCT FEATURES & ADVANTAGES

Multiple mechanical keying and color-coded options

Allow same-circuit, multiple connector use with virtually no chance of cross mating. Color coding provides visual indication of the proper mating connector — enabling faster assembly.

17% reduction in pitch over similar power connectors

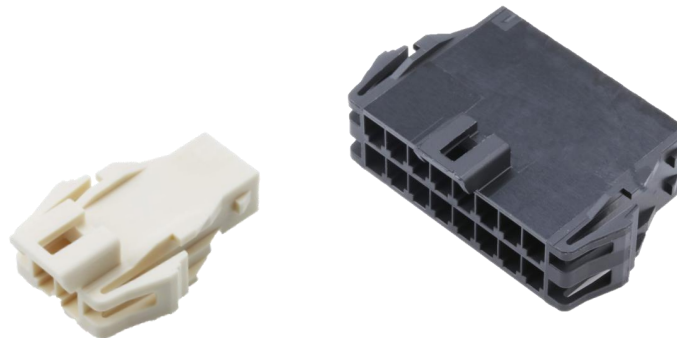
Current-dense design saves PCB space. Allows for smaller packaging without sacrificing current-carrying capabilities.

Fully isolated terminals

Protect against potential damage of the header and receptacle terminals during handling and mating.

Terminal interface with six independent points of contact

Offers redundant, secondary current paths for long-term performance and reliability.



Ultra-Fit Wire-to-Wire Power Connectors

Optional TPA (Terminal Position Assurance) retainer

Guarantees the terminal is fully seated in the housing to reduce terminal back-out. Retains terminal if main retention feature fails.

Ultra low mating force terminal

Reduces operator fatigue and improves assembly compliance for high-circuit applications.

Positive-lock housing with anti-snag design

Ensures mated connector assemblies will not accidentally disengage. Provides an audible click while mating. Protects latch from damage due to wire snags.



THANK YOU

creating connections for life

molex