

Type 2GT LoRa Module EVB User Manual

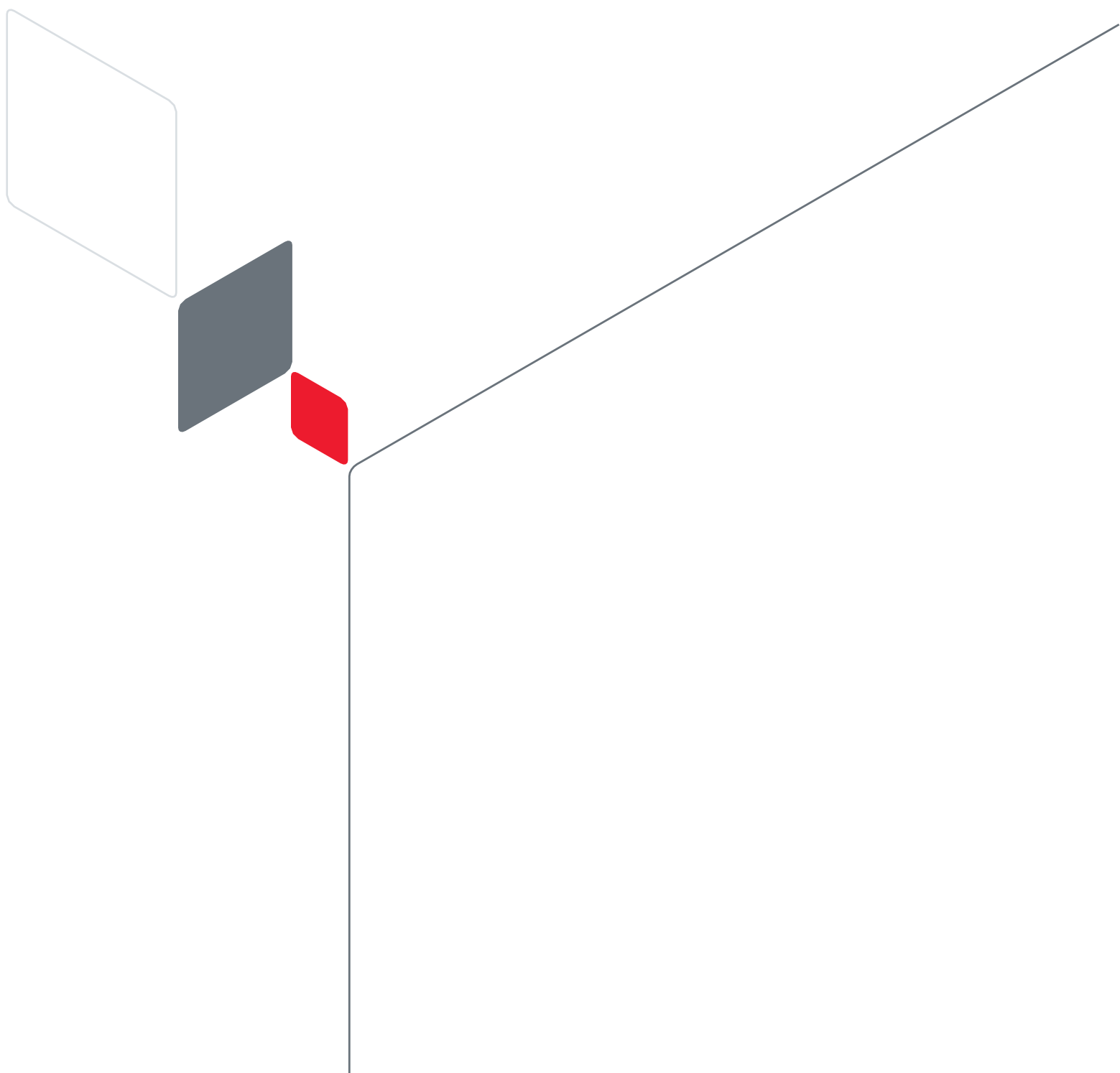


Table of Contents

1 Introduction.....	3
2 General Overview	3
2.1 View of EVBs	3
2.1.1 View of JS-1076 EVB	3
2.1.2 View of JS-1125 EVB	5
2.2 EVB schematic.....	6
2.3 Accessories of EVB.....	7
2.4 EVB and Accessories Assembly	8
3 Parts Applications	9
3.1 Antenna ports.....	9
3.2 Switch	9
3.2.1 Switch on JS-1076 EVB	9
3.2.2 Switch on JS-1125 EVB	10
3.3 Indication LEDs.....	10
4 EVB Operation Procedures.....	10
4.1 MCU Platform driver install.....	10
4.2 MCU test firmware install	11
4.3 Set command to EVB.....	12
5 Reference	13
Revision History.....	14

Figures

Figure 1: Top View of JS-1076 EVB	3
Figure 2: Top View of JS-1125 EVB	5
Figure 3: JS-1076 EVB schematic	6
Figure 4: JS-1125 EVB schematic	7
Figure 5: Accessories of EVB.....	8
Figure 6: Connection between EVB and NUCLEO-L476RG platform.....	8
Figure 7: Assembly antennas and connect platform to PC	9
Figure 8: Switch used for power supply on JS-1076 EVB.....	9
Figure 9: Switch used for power supply on JS-1125 EVB.....	10
Figure 10: COM information.....	10
Figure 11: Install MCU firmware process	11
Figure 12: Install MCU test firmware successfully.....	11
Figure 13: Select the serial port.....	12

Figure 14: Set the baud rate.....	12
-----------------------------------	----

Tables

Table 1: Parts on the JS-1076 EVB	4
Table 2: Parts on the JS-1125 EVB	5
Table 3: Accessories of EVB.....	7
Table 4: Reference Table.....	13

1 Introduction

This document specifies the usage of 2GT module EVB which is an assistant tool for engineers to develop and test Murata 2GT module.

Murata provides 2 types of 2GT EVB, one type is JS-1076 EVB, another one is JS-1125 EVB. Customer can refer the information based on the different EVB in this file.

2 General Overview

2.1 View of EVBs

2.1.1 View of JS-1076 EVB

The figure 1 shows the top view of the JS-1076 EVB.

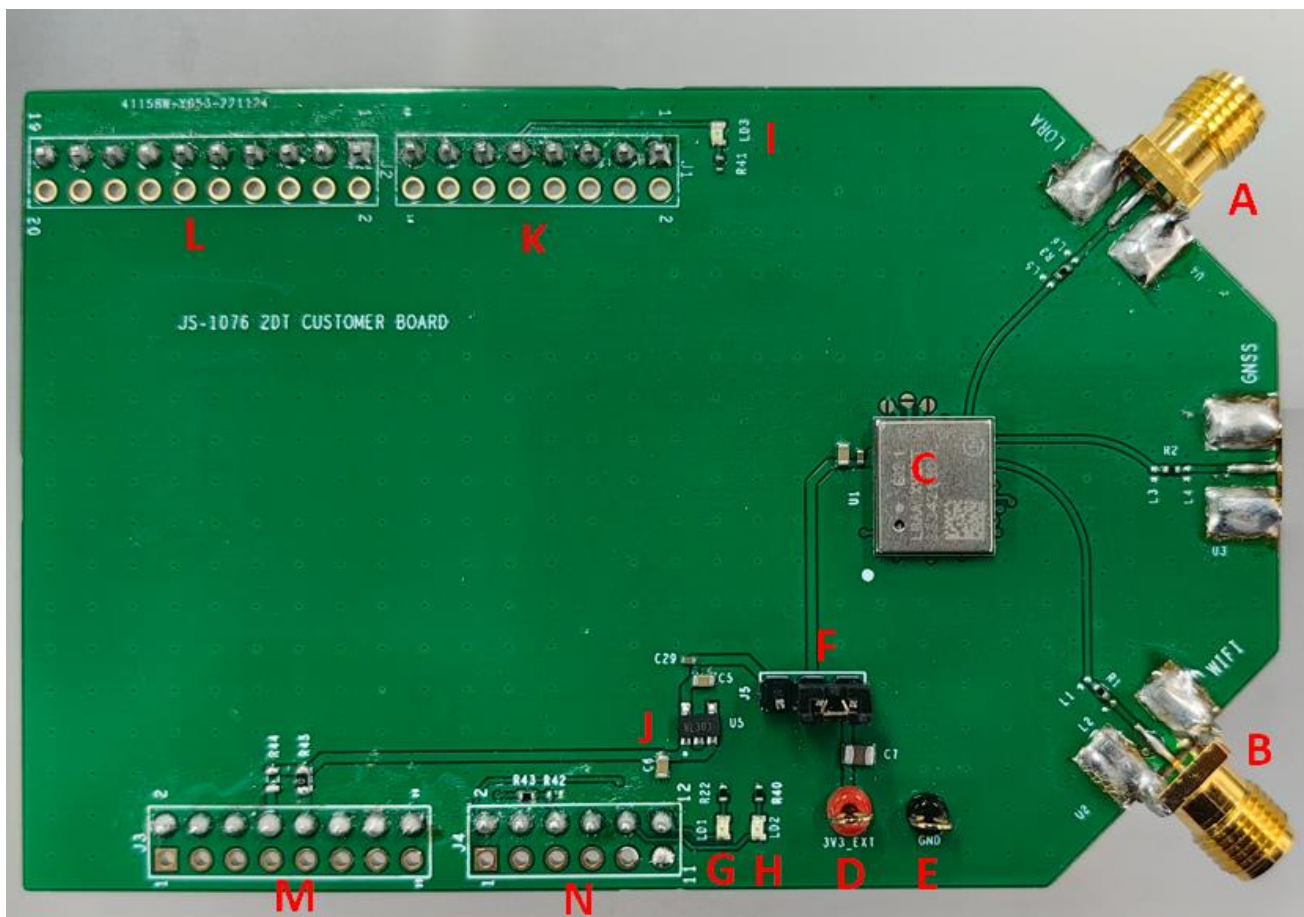


Figure 1: Top View of JS-1076 EVB

The table1 shows the parts on the JS-1076 EVB information.

Table 1: Parts on the JS-1076 EVB

SN	Ref No	Description
A	U4	Lora sub_G RF port
B	U2	Lora 2.4G RF port
C	U1	2GT module
D	3V3_EXT	Connector of external power supply
E	GND	connector of external GND
F	J5	Switch of power supply
G	LD1	LoRa Transmit Data Indication LED
H	LD2	LoRa Receive Data Indication LED
I	LD3	Wi-Fi or GNSS Sniff Indication LED
J	U5	3V3 LDO
K	J1	Connect pins to MCU platform
L	J2	Connect pins to MCU platform
M	J3	Connect pins to MCU platform
N	J4	Connect pins to MCU platform

2.1.2 View of JS-1125 EVB

The figure 2 shows the top view of the JS-1125 EVB.

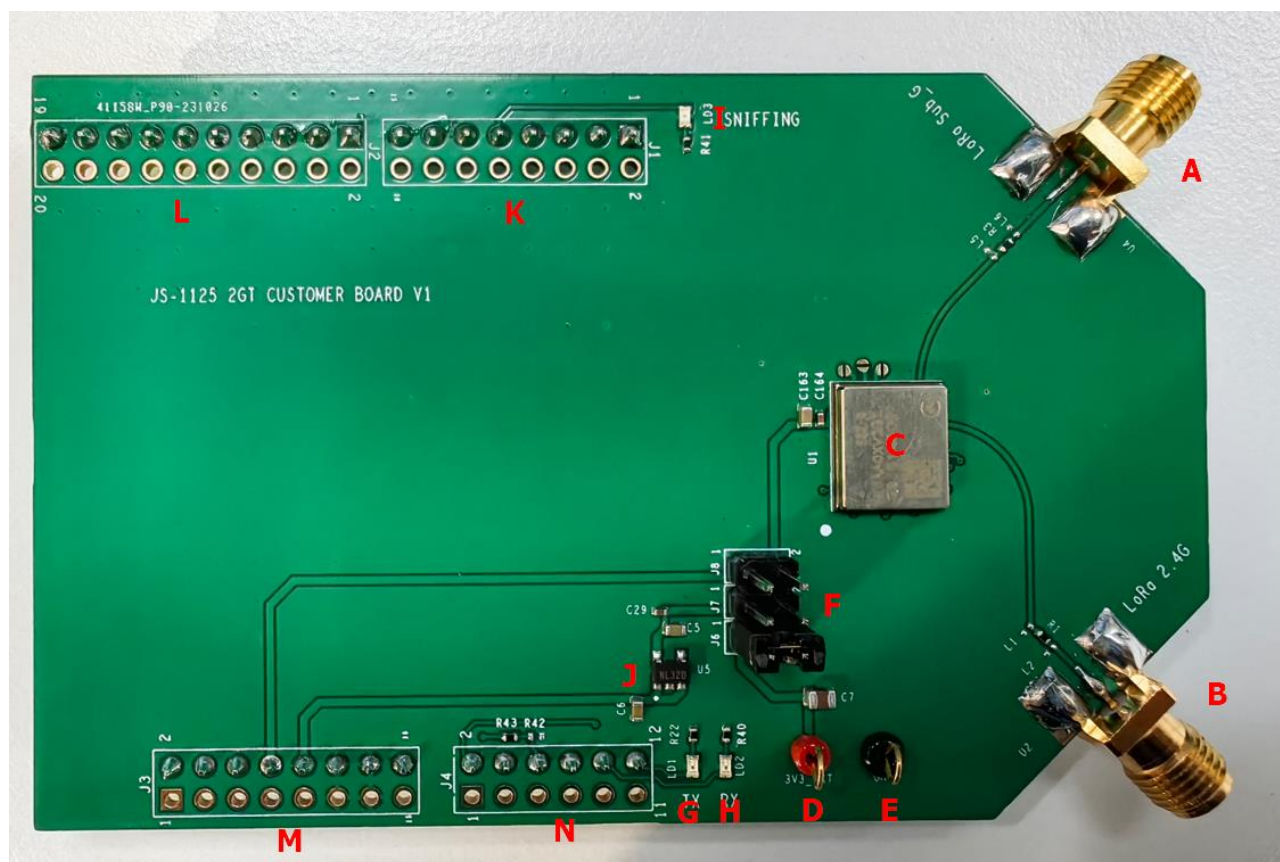


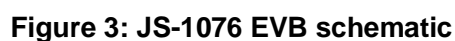
Figure 2: Top View of JS-1125 EVB

The table2 shows the parts on the JS-1125 EVB information.

Table 2: Parts on the JS-1125 EVB

SN	Ref No	Description
A	U4	Lora sub_G RF port
B	U2	Lora 2.4G RF port
C	U1	2GT module
D	3V3_EXT	Connector of external power supply
E	GND	connector of external GND
F	J6, J7, J8	Switch of power supply
G	LD1	LoRa Transmit Data Indication LED
H	LD2	LoRa Receive Data Indication LED
I	LD3	Wi-Fi or GNSS Sniff Indication LED
J	U5	3V3 LDO
K	J1	Connect pins to MCU platform
L	J2	Connect pins to MCU platform
M	J3	Connect pins to MCU platform
N	J4	Connect pins to MCU platform

The figure3 and figure4 shows the schematic of EVB. User can refer it to check the parts on the EVB.



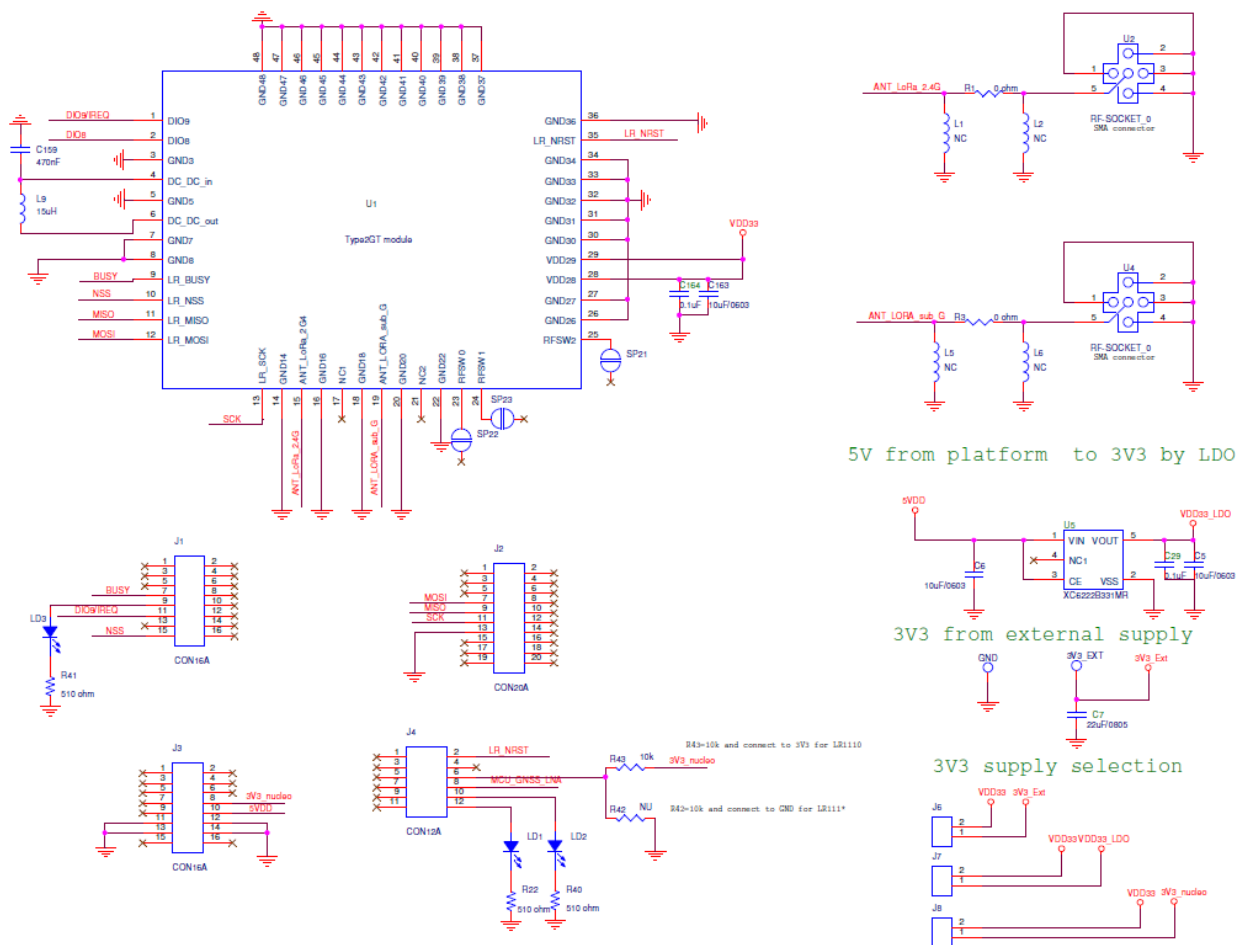


Figure 4: JS-1125 EVB schematic

2.3 Accessories of EVB

The accessories are needed to set up the EVB test system. And table2 and figure3 shows the detailed information.

Table 3: Accessories of EVB

SN	Description	Provider
A	Lora antenna for sub_G band	Murata
B	Lora antenna for 2.4G ISM band	Murata
C	NUCLEO-L476RG MCU platform	Customer
D	Mini USB	Customer

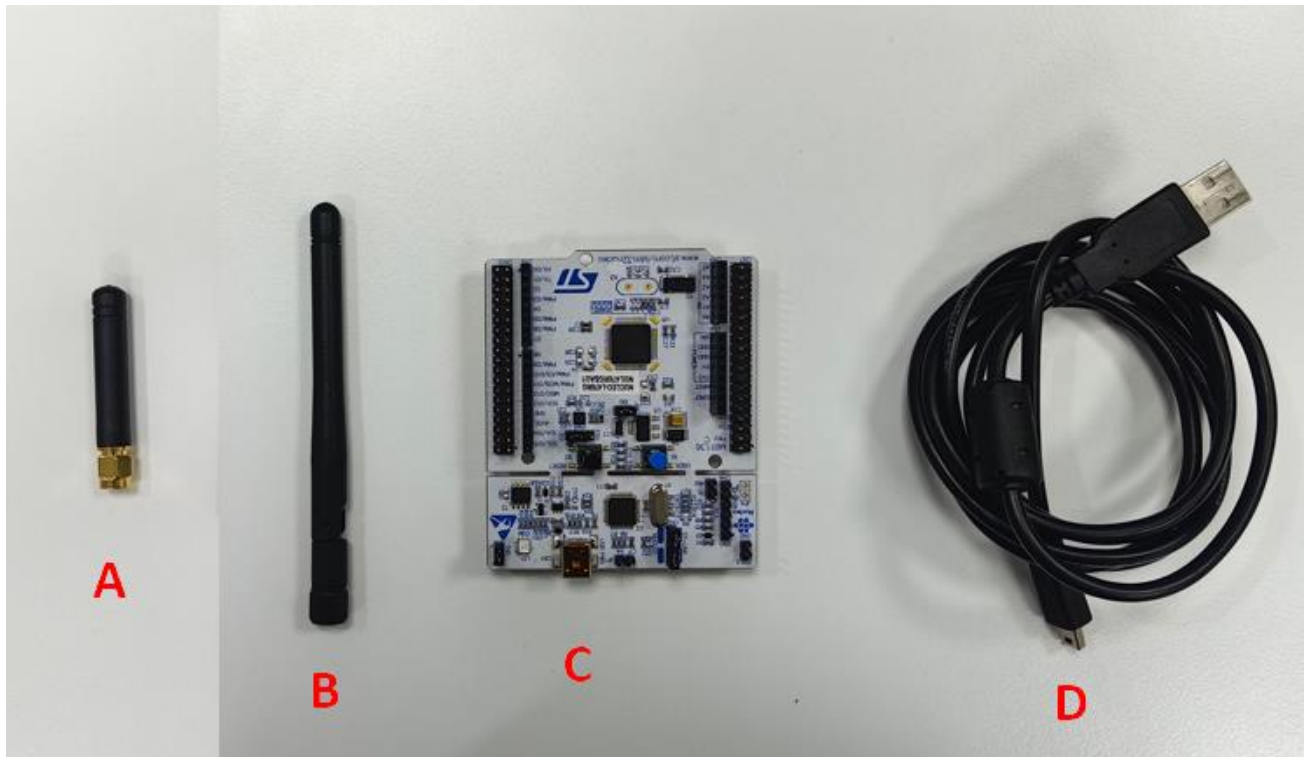


Figure 5: Accessories of EVB

2.4 EVB and Accessories Assembly

STEP1: Connect the EVB to the NUCLEO-L476RG. Make sure the pins are connected in the red areas on the EVB and platform as showed in the figure 6.

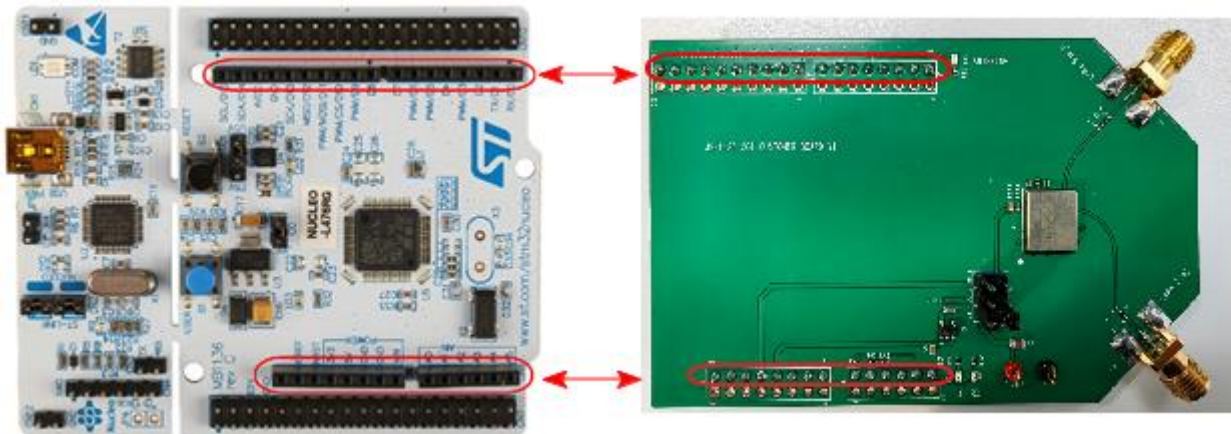


Figure 6: Connection between EVB and NUCLEO-L476RG platform

STEP2: Connect the NUCLEO-L476RG to PC by Mini USB interface cable and assembly the antennas on the EVB as showed in figure 7.

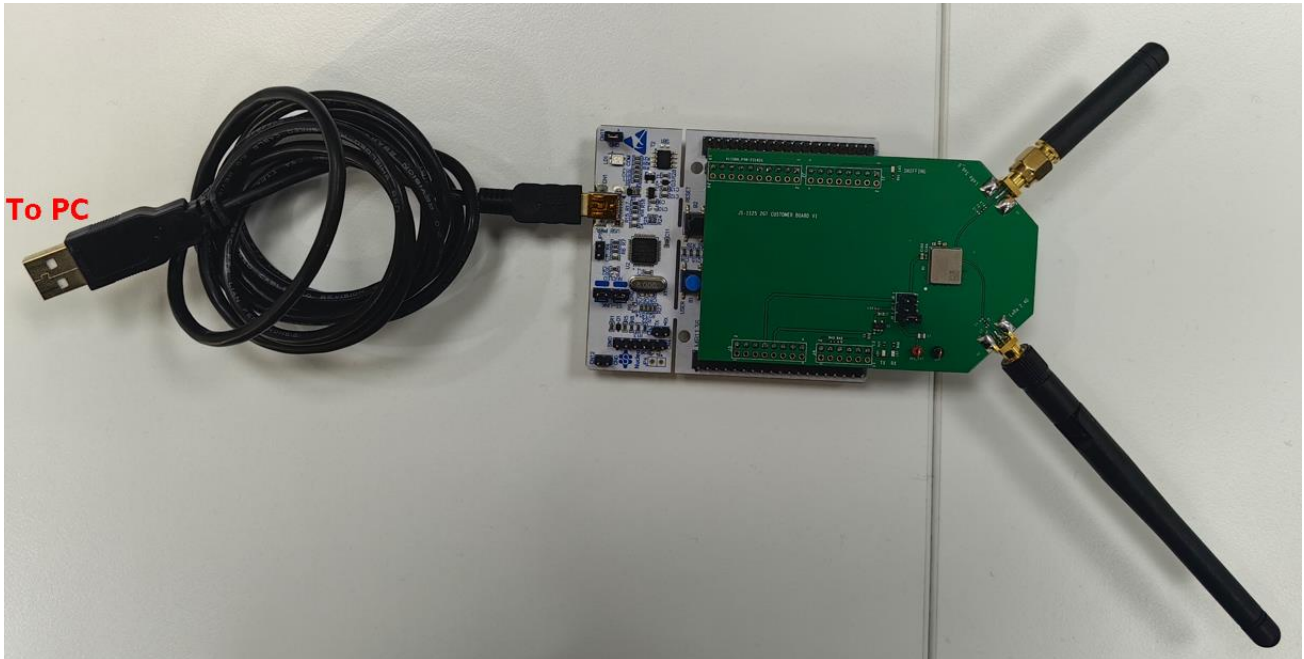


Figure 7: Assembly antennas and connect platform to PC

3 Parts Applications

3.1 Antenna ports

There are 2 RF ports on the EVB, customer can use them to do the conductive test and radioactive test for different purposes. The position and description can refer the figure1 and table1.

3.2 Switch

3.2.1 Switch on JS-1076 EVB

There is a J5 switch used for the power supply selection as showed in figure 8. If customer want to use the supply from Nucleo board, please connect pin1 and pin2.

If customer want to use external DC supply, please connect pin2 and pin3.

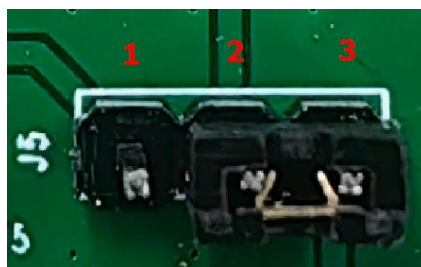


Figure 8: Switch used for power supply on JS-1076 EVB

3.2.2 Switch on JS-1125 EVB

There are J6,J7,J8 switches on JS-1125 EVB used for the power supply selection as showed in figure 9.

If we use the external DC supply, please connect pin1 and pin2 of J6.

If we use the 5V from Nucleo board, please connect pin1 and pin2 of J7.

If we use the 3.3V from Nucleo board, please connect pin1 and pin2 of J8.



Figure 9: Switch used for power supply on JS-1125 EVB

3.3 Indication LEDs

There are 3 LEDs (LD1, LD2 and LD3) on the EVB, the position and description can refer the figure1,2 and table1,2.

4 EVB Operation Procedures

4.1 MCU Platform driver install

Step1: Connect the PC USB port to NUCLEO-L476 board USB port, open the **Device Manager** in the PC, then install **ST-LINK_USB_V2_Driver**. Download link is in the table 4.

Step2: Install the driver successfully and see the com port in figure 10:

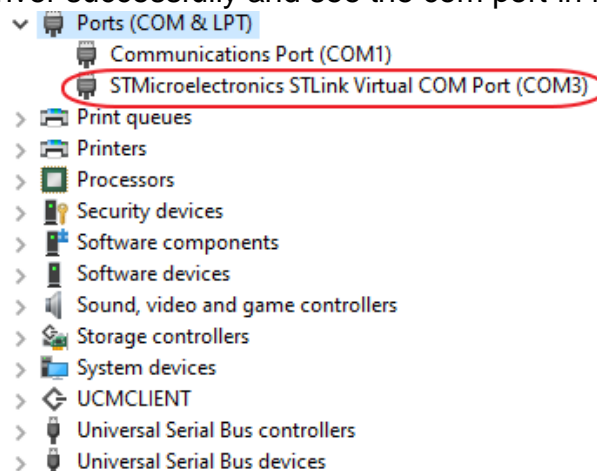


Figure 10: COM information

4.2 MCU test firmware install

Step1: Open the STM32cuberprogrammer software. Download link is in the table 4

Step2: Click connect button.

Step3: Click connect browse button and select test firmware.

Step4: Click start programming.

Step5: Check pop-up windows shows the download complete or not.

These steps showed in the figure 11 and figure12.

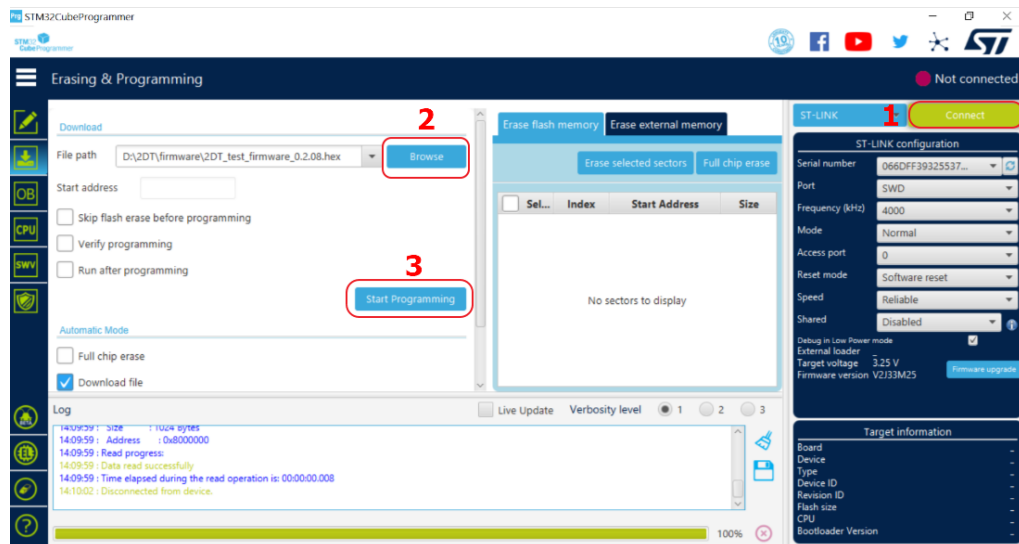


Figure 11: Install MCU firmware process

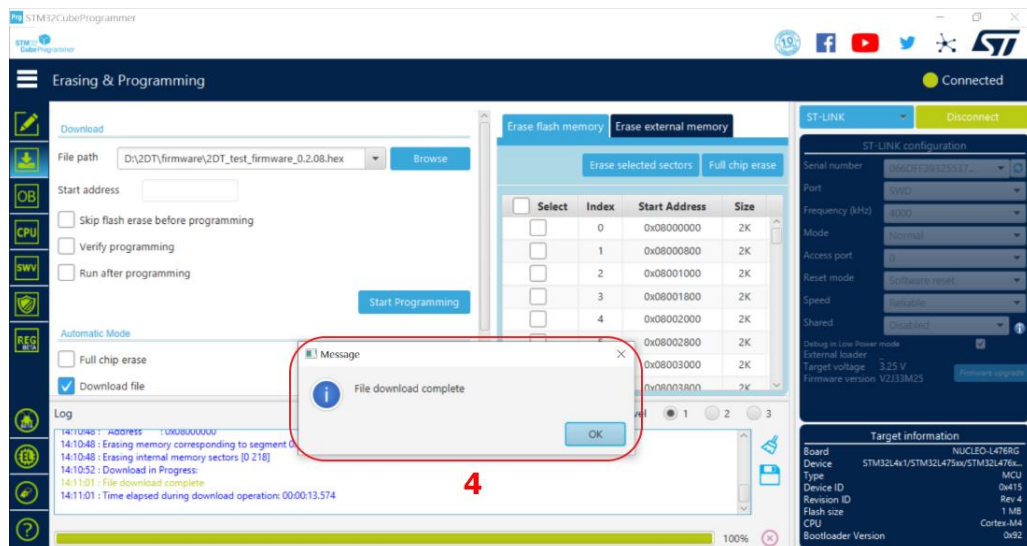


Figure 12: Install MCU test firmware successfully

4.3 Set command to EVB

Step1: Open tera term, putty or other UART communication tool, download link is in table4.

Step2: Select the Serial and choose the correct com port as showed in figure 13.

Step3: Go to Setup>Serial port, change the Speed to 115200 and click on new setting as showed in figure 14.

Step4: Set the command to EVB. For the command information, please refer to Type-2GT LR11xx test firmware AT command specification.pdf in table 4.

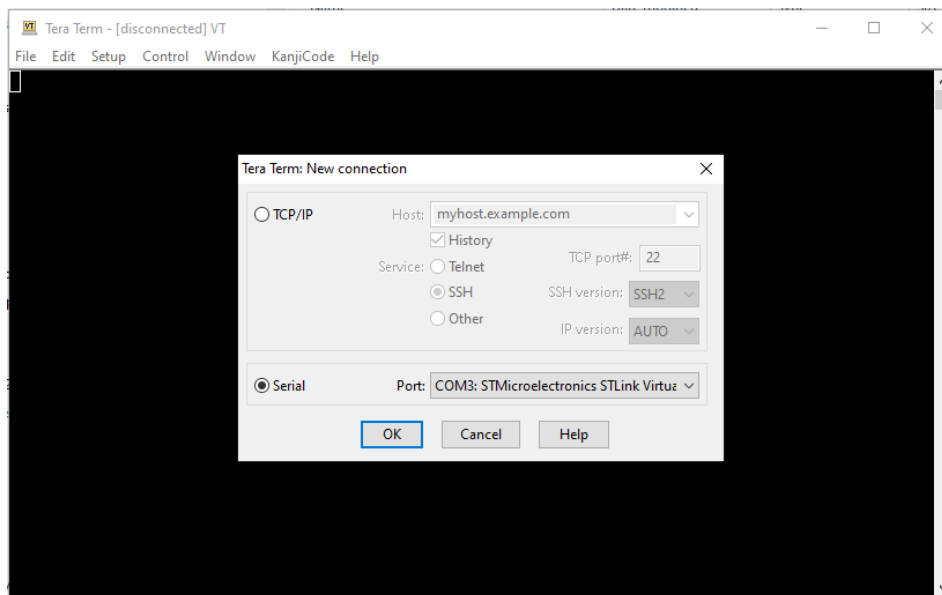


Figure 13: Select the serial port

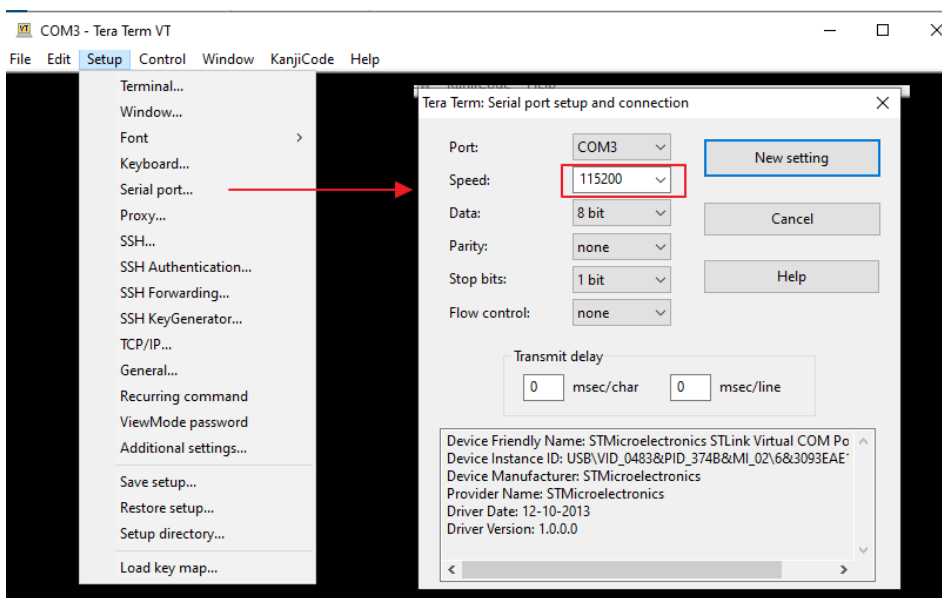


Figure 14: Set the baud rate

5 Reference

Table 4 reviews all the key reference links and documents that user may like to refer to.

Table 4: Reference Table

Documents and information	Notes
NUCLEO-I476 Link	https://www.st.com/en/evaluation-tools/NUCLEO-I476rg.html
ST-LINK_USB_V2_Driver Link	STSW-LINK009 - ST-LINK, ST-LINK/V2, ST-LINK/V2-1, STLINK-V3 USB driver signed for Windows7, Windows8, Windows10 - STMicroelectronics
STM32cuberprogrammer Link	STM32CubeProg - STM32CubeProgrammer software for all STM32 - STMicroelectronics
Tera Term software Link	Tera Term Open Source Project (osdn.jp)
Putty software Link	Download PuTTY: latest release (0.78) (greenend.org.uk)
Type-2GT LR11xx test firmware AT command specification.pdf	This document is intended to describe the command interface and format for Type-2GT LR11xx test firmware.

Revision History

Revision	Date	Section	Change Description
A	07.18.2023		First issue, EVB is JS-1076.
B	12.28.2023		Added the user manual based on JS-1125 EVB.



Copyright © Murata Manufacturing Co., Ltd. All rights reserved. The information and content in this document are provided “as-is” with no warranties of any kind and are for informational purpose only. Data and information have been carefully checked and are believed to be accurate; however, no liability or responsibility for any errors, omissions, or inaccuracies is assumed.

Wi-Fi® is a registered trademark of Wi-Fi Alliance. The Bluetooth® word mark and logos are registered trademarks owned by Bluetooth SIG, Inc. Other brand and product names are trademarks or registered trademarks of their respective owners.

Specifications are subject to change without notice.