

Quick Start Guide – Type 2DT Evaluation Kit

You can use this EVK for Type2DT communication test, power evaluation. Running an application will need an external MCU
A complete Type2DT EVK User Guide can be found in our my Murata <Type2DT LoRa Support Site> https://my.murata.com/web/lor_a_2dt
If you have any questions about the support site registration process, please contact our local sales www.murata.com/en-global/support/contactinformation

About Type2DT

- Module Size: 9.98 x 8.70 x 1.74 mm(max)
- Connectivity: LoRaWAN
- Interface: SPI/GPIOs
- Support Wi-Fi scan / GNSS scan
- Integrated TCXO & LNA

What Murata supply

- Type 2DT EVK
- Quick Start Guide
- Support Site Access Guide
- LoRa Antenna
- GNSS antenna
- Wi-Fi antenna

What customer need

- Host MCU board
- Windows® OS(XP,7,8,10)
- LoRa gateway connected to LoRa network server

How to connect

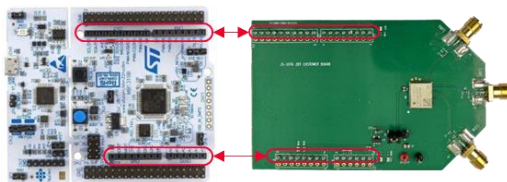


Figure1: 2DT EVK + Host Setup



Figure2: connection to the PC

How to program Application

- Connect 2DT EVK to the **Host MCU** Board via Arduino connectors
- Connect all the Antennas to the SMA connector
- Connect Host MCU board to PC with Micro-AB USB cable
- Run STM32Cube Programmer tool on PC and choose ST-LINK interface

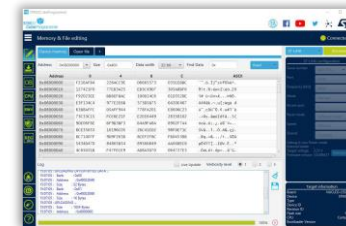


Figure3: STM32Cube programmer Configuration Window

- Select the Firmware file to be programmed
- Select the programming options:
- Click on the “Start programming” button to start programming