



TARVOS-III REFERENCE MANUAL

AMB8826 / 2609011x8100x

VERSION 2.2

MARCH 7, 2019

Revision history

Manual version	FW version	HW version	Notes	Date
1.1	1.0.0 - 2.0.0	2.2	<ul style="list-style-type: none"> Initial version 	January 2017
2.0	2.1.0	2.3	<ul style="list-style-type: none"> New corporate design and structure Added long range mode 3 to radio profiles 	September 2018
2.1	2.1.0	2.3	<ul style="list-style-type: none"> Switched to new product name Tarvos-III instead of AMB8826 	November 2018
2.2	2.1.0	2.3	<ul style="list-style-type: none"> Added chapter Reference design Added chapter Information for Ex Protection 	February 2019

★ For firmware history see chapter [Firmware history](#)

Abbreviations and abstract

Abbreviation	Name	Description
ACK	Acknowledgement	Acknowledgement pattern confirming the reception of the transmitted data packet.
CS	Checksum	XOR checksum to check the correct transmission of the prepended Bytes.
DC	Duty cycle	Transmission time in relation of one hour. 1% means, channel is occupied for 36 seconds per hour.
FSE	Field Sales Engineer	Support and sales contact person responsible for limited sales area.
0xhh [HEX]	Hexadecimal	All numbers beginning with 0x are stated as hexadecimal numbers. All other numbers are decimal unless notified .
HIGH	High signal level	Signal level equals VCC.
LOW	Low signal level	Signal levels equals 0 Volts.
LPM	Low power mode	Operation mode for reduced power consumption.
LRM	Long range mode	Tx mode increasing the RX sensitivity by using spreading and forward error correction.
LSB	Least significant bit	
MSB	Most significant bit	
PL	Payload	The real, non-redundant information in a frame / packet.
RF	Radio frequency	Describes everything relating to the wireless transmission.
UART	Universal Asynchronous Receiver Transmitter	The UART allows communicating with the module of a specific interface.
US	UserSettings	Any relation to a specific entry in the UserSettings is marked in a special font and can be found in the chapter 8.
VCC	Supply voltage	

Contents

1	Introduction	8
1.1	Operational description	8
1.2	Block diagram	9
1.3	Ordering information	10
2	Electrical specifications	11
2.1	Recommended operating conditions	11
2.2	Absolute maximum ratings	11
2.3	Power consumption	12
2.3.1	Static	12
2.3.2	Dynamic	12
2.4	Radio characteristics	13
2.5	Pin characteristics	13
3	Pinout	15
4	Quickstart	18
4.1	Minimal pin configuration	18
4.2	Power up	18
4.3	Quickstart example	19
5	Functional description	21
5.1	Physical layer	21
5.2	MAC and network layer	21
5.2.1	Addressing modes	21
5.2.2	Unicast	22
5.2.3	Multicast/Broadcast	22
5.2.4	Acknowledgement and retries	22
5.2.5	Packet sniffer mode	22
5.2.6	Repeater mode and mesh network	22
5.3	System configuration parameters	22
6	Host connection	24
6.1	Serial interface: UART	24
7	The command interface	25
7.1	Overview	25
7.2	Data transfer and reception in the command mode	26
7.2.1	CMD_DATA_REQ	26
7.2.2	CMD_DATAEX_REQ	26
7.2.3	CMD_DATAEX_IND	28
7.2.4	CMD_REPEAT_IND	29
7.3	Requesting parameters, actions and events	30
7.3.1	CMD_RESET_REQ	30
7.3.2	CMD_RESET_IND	30
7.3.3	CMD_SHUTDOWN_REQ	30
7.3.4	CMD_STANDBY_REQ	31
7.3.5	CMD_STANDBY_IND	31

7.3.6	CMD_RSSI_REQ	32
7.4	Modification of volatile parameters	33
7.4.1	CMD_SET_PAPOWER_REQ	33
7.4.1.1	Example	33
7.4.2	CMD_SET_CHANNEL_REQ	33
7.4.2.1	Example	34
7.4.3	CMD_SET_DESTNETID_REQ	34
7.4.4	CMD_SET_DESTADDR_REQ	35
7.5	Modification of non-volatile parameters	36
7.5.1	CMD_SET_REQ	36
7.5.2	CMD_GET_REQ	37
7.5.3	CMD_FACTORY_RESET_REQ	37
7.6	Message overview	39
8	UserSettings - Module configuration values	40
8.1	Difference between volatile and non-volatile settings	40
8.2	Modifying the UserSettings	40
8.2.1	UART_Baudrate: Configure the UART speed	40
8.2.1.1	Example 1	41
8.2.1.2	Example 2	41
8.2.2	RADIO_DefaultRfProfile: Configure the RF-settings	42
8.2.2.1	Example 1	43
8.2.2.2	Example 2	43
8.2.3	RADIO_DefaultRfTXPower: Configure the RF TX-power	44
8.2.3.1	Example 1	44
8.2.3.2	Example 2	44
8.2.4	RADIO_DefaultRfChannel: Configure the RF channel	45
8.2.4.1	Example 1	45
8.2.4.2	Example 2	45
8.2.5	MAC_DefaultAddressMode: Configure the address mode	46
8.2.5.1	Example 1	47
8.2.5.2	Example 2	47
8.2.6	MAC_NumRetrys: Configure the number of retries	48
8.2.6.1	Example 1	48
8.2.6.2	Example 2	48
8.2.7	MAC_DefaultDestNetID: Configure the destination network id	49
8.2.7.1	Example 1	49
8.2.7.2	Example 2	49
8.2.8	MAC_DefaultDestAddr: Configure the destination address	50
8.2.8.1	Example 1	50
8.2.8.2	Example 2	50
8.2.8.3	Example 3	50
8.2.9	MAC_SourceNetID: Configure the source network id	52
8.2.9.1	Example 1	52
8.2.9.2	Example 2	52
8.2.10	MAC_SourceAddr: Configure the source address	53
8.2.10.1	Example 1	53
8.2.10.2	Example 2	53
8.2.10.3	Example 3	53

8.2.11 OpMode: Read the operating mode of the module	55
8.2.11.1 Example 1	55
8.2.12 CfgFlags: Configure the configuration flags of the module	56
8.2.12.1 Example 1	56
8.2.12.2 Example 2	56
8.2.13 RpFlags: Configure the repeater flags of the module	58
8.2.13.1 Example 1	58
8.2.13.2 Example 2	59
8.2.14 RP_NumSlots: Configure the repeater data base	60
8.2.14.1 Example 1	60
8.2.14.2 Example 2	61
8.2.15 FactorySettings: Read out the factory settings	62
8.2.15.1 Example 1	62
8.2.16 FirmwareVersion: Read out the firmware version	63
8.2.16.1 Example 1	63
9 Timing parameters	64
9.1 Reset behavior	64
9.1.1 Reset via /RESET pin	64
9.1.2 Reset as result of a serious error condition	64
9.2 Latencies when leaving standby or shutdown	64
9.2.1 Wake-up latency from standby	64
9.2.2 Wake-up latency from shutdown	65
9.3 Latencies during data transfer / packet generation	65
10 Radio parameters	66
10.1 Channel assignment	66
11 Battery powered operation	69
12 Custom firmware	70
12.1 Custom configuration of standard firmware	70
12.2 Customer specific firmware	70
12.3 Customer firmware	70
12.4 Contact for firmware requests	71
13 Flooding mesh: Using the repeater functionality	72
13.1 Setup of the network and repeater device	73
13.2 Example network	74
13.2.1 Application in parallel networks	75
14 Using the long range mode	76
15 Compatibility to existing proprietary modules	77
15.1 Restrictions	77
16 Firmware update	79
16.1 Update using the UART interface	79
16.1.1 ACC Software	79
16.1.2 Generic UART solution	79

16.2 Update using JTAG	80
17 Firmware history	81
18 Design in guide	82
18.1 Advice for schematic and layout	82
18.2 Dimensioning of the micro strip antenna line	84
18.3 Antenna solutions	85
18.3.1 Wire antenna	85
18.3.2 Chip antenna	86
18.3.3 PCB antenna	86
18.3.4 Antennas provided by Würth Elektronik eiSos	87
18.3.4.1 2600130011 - Helike - 169 MHz dipole antenna	87
18.3.4.2 2600130041 - Herse - 434 MHz dipole antenna	88
18.3.4.3 2600130081 - Hyperion-I - 868 MHz dipole antenna	89
18.3.4.4 2600130082 - Hyperion-II - 868 MHz magnetic base antenna	90
18.3.4.5 2600130021 - Himalia - 2.4 GHz dipole antenna	91
19 Reference design	92
19.1 Schematic	93
19.2 Layout	95
20 Manufacturing information	97
20.1 Moisture sensitivity level	97
20.2 Soldering	97
20.2.1 Reflow soldering	97
20.2.2 Cleaning	99
20.2.3 Other notations	99
20.3 ESD handling	99
20.4 Safety recommendations	100
21 Physical dimensions	101
21.1 Dimensions	101
21.2 Weight	101
21.3 Module drawing	102
21.4 Footprint	103
21.5 Antenna free area	103
22 Marking	104
22.1 Lot number	104
22.2 General labeling information	105
22.2.1 Example labels of Würth Elektronik eiSos products	105
23 Information for Ex Protection	106
24 Regulatory compliance information	107
24.1 Important notice EU	107
24.2 Conformity assessment of the final product	107
24.3 Exemption clause	107
24.4 EU Declaration of conformity	108

25 Important information	109
25.1 General customer responsibility	109
25.2 Customer responsibility related to specific, in particular safety-relevant applications	109
25.3 Best care and attention	109
25.4 Customer support for product specifications	109
25.5 Product improvements	110
25.6 Product life cycle	110
25.7 Property rights	110
25.8 General terms and conditions	110
26 Legal notice	111
26.1 Exclusion of liability	111
26.2 Suitability in customer applications	111
26.3 Trademarks	111
26.4 Usage restriction	111
27 License agreement for Würth Elektronik eiSos GmbH & Co. KG connectivity product firmware and software	113
27.1 Limited license	113
27.2 Usage and obligations	113
27.3 Ownership	114
27.4 Firmware update(s)	114
27.5 Disclaimer of warranty	114
27.6 Limitation of liability	115
27.7 Applicable law and jurisdiction	115
27.8 Severability clause	115
27.9 Miscellaneous	115

1 Introduction

1.1 Operational description

The Tarvos-III is a radio sub module for wireless communication between devices such as control systems, remote controls, sensors etc. It offers several radio configurations, address modes and relieves the host system of radio-specific tasks as

- checksum calculation,
- address resolution
- repetition of unacknowledged telegrams (if enabled)

It can be deployed wherever the wireless exchange of data packets between two or more parties is required. A serial interface (UART) whose data rate and format can be adjusted flexibly is available for communicating with the host system.

1.2 Block diagram

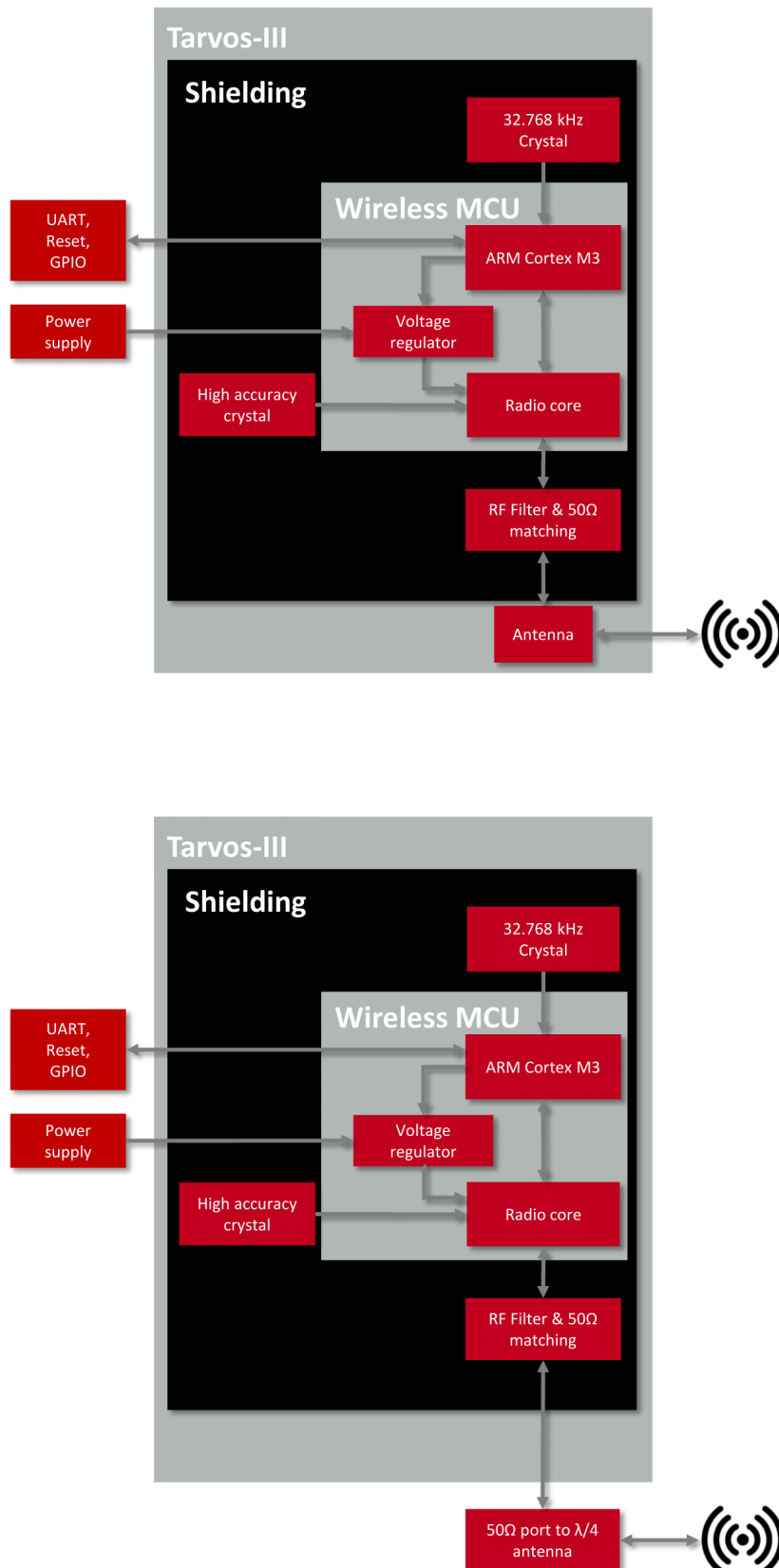


Figure 1: Block diagram of the module variants with internal PCB antenna and antenna pad

1.3 Ordering information

WE order code	Former order code	Description
2609011081000	AMB8826-TR	Radio module 868 MHz with integrated PCB antenna, Tape & Reel
2609011181000	AMB8826-1-TR	Radio module 868 MHz with RF pad, Tape & Reel
2609011081009	AMB8826-DEV	Development kit including 3 AMB8826
2609011181009	AMB8826-1-DEV	Development kit including 3 AMB8826-1
2609019281001	AMB8826-1-EV	Evaluation kit with module AMB8826-1
2609017281001	AMB8826-PI	AMBER Pi development board including AMB8826-1 868 MHz radio module
2609026281001	AMB8865	Radio dongle 868 MHz with SMA connector

Table 1: Ordering information

2 Electrical specifications

As not otherwise stated measured on the evaluation board Tarvos-III -EV with $T=25^{\circ}\text{C}$, $V_{\text{DDS}}=3.3\text{V}$, internal DC-DC converter active and a $50\ \Omega$ connection. Any radio transmission in the standard firmware uses boost mode independent of the chosen output power.

2.1 Recommended operating conditions

Description	Min.	Typ.	Max.	Unit
Ambient temperature	-40	25	85	$^{\circ}\text{C}$
Supply voltage (V_{DDS})	2.2 ¹	3.0	3.7	V
Rising supply voltage slew rate	0		100	$\text{mV}/\mu\text{s}$
Falling supply voltage slew rate	0		20	$\text{mV}/\mu\text{s}$
Falling supply voltage slew rate, with low power flash settings			3	$\text{mV}/\mu\text{s}$

Table 2: Recommended operating conditions

2.2 Absolute maximum ratings

Description	Min.	Typ.	Max.	Unit
Supply voltage (V_{DDS})	-0.3		4.1	V
Voltage on any digital pin	-0.3		$V_{\text{DDS}} + 0.3$, max 4.1	V
Input RF level			10	dBm
Output RF level, with boost mode		14		dBm

Table 3: Absolute maximum ratings

¹Below 2.2V the chipset stops immediately working. A certain buffer for voltage drops should be considered by for example supplying with 2.4V.

2.3 Power consumption



As a DC/DC voltage regulator is integrated, the current consumption is strongly depending on the supplied voltage level.



The transmit and receive currents are depending on the impedance matching, and therefore may vary depending on antenna selection and matching.



The indicated values are the complete current consumption for radio and active MCU. Not to be confused with only radio or only CPU core currents, as sometimes stated by others.



A stable power supply is indispensable to ensure valid operating conditions for the module.

2.3.1 Static

The current consumption is the sum of the CPU current and Radio TX or RX current in active modes. Measurements on Tarvos-III -EV with $T=25^{\circ}\text{C}$, $V_{\text{DDS}}=3.6\text{V}$, internal DC-DC converter active and a $50\ \Omega$ connection unless specified otherwise.

Description	Typ.	Unit
TX current 10 dBm output power, boost mode	17	mA
TX current 14 dBm output power, boost mode	26	mA
RX current	8	mA
Low power (standby) radio off, UART off, RTC running, full RAM retention	1.6	μA
Low power (shutdown) radio off, UART off, RTC off, no RAM retention	0.2	μA

Table 4: Power consumption @3.6V

2.3.2 Dynamic

Measurements on Tarvos-III -EV with $T=25^{\circ}\text{C}$, internal DC-DC converter active and a $50\ \Omega$ connection unless specified otherwise.

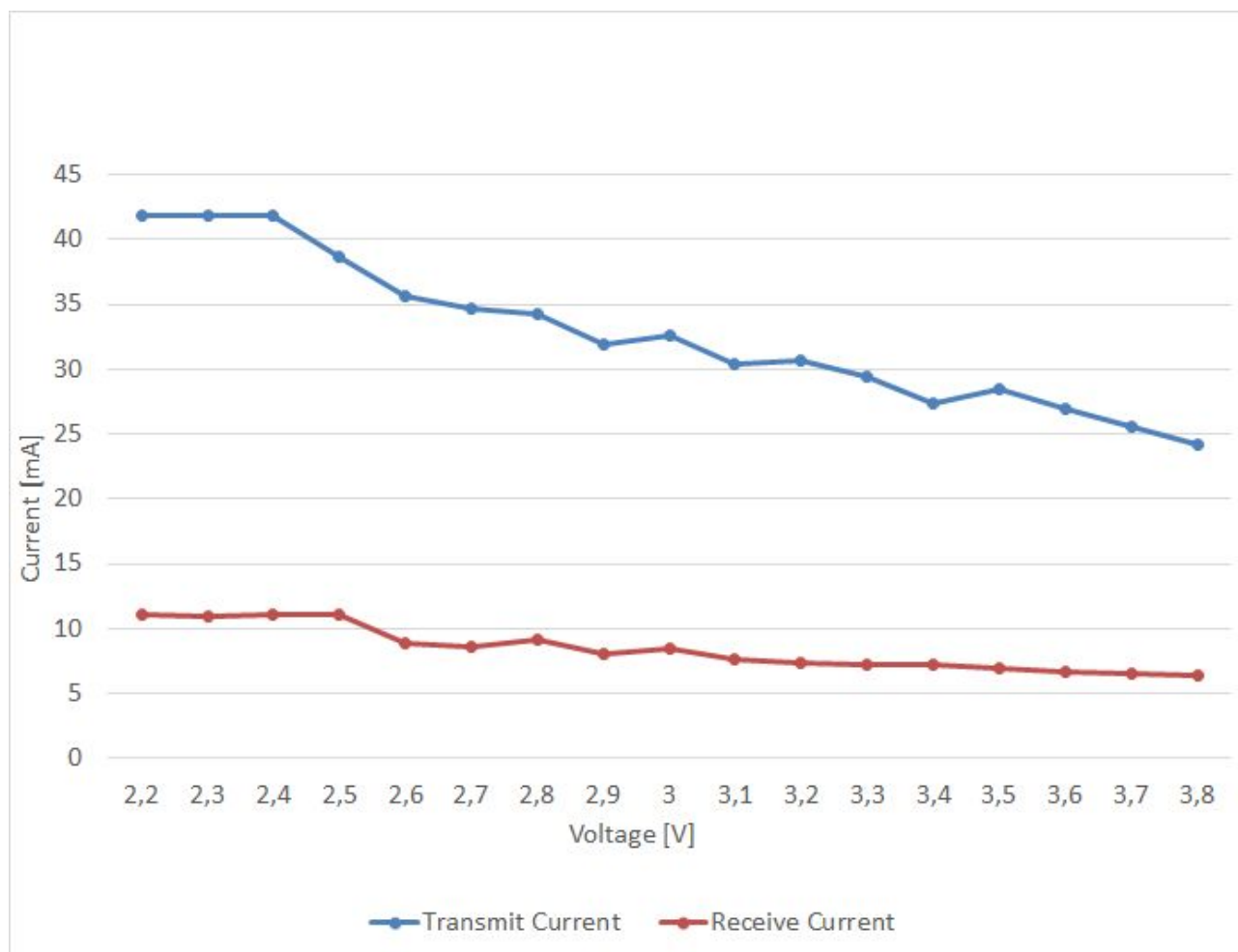


Figure 2: Typical behavior of transmit and receive current in relation to applied supply voltage

2.4 Radio characteristics

Description	Min	Typ.	Max	Unit
Frequency band	868.0	868.6	870.0	MHz
Radio data rate	0.625	38.4	400	kbit/s
RX sensitivity	-124	-107		dBm
TX power	0	14	14	dBm

Table 5: Radio characteristics

2.5 Pin characteristics

Property	typ. Value	Unit
Default GPIO maximum current	2	mA
Maximum current of <i>RX_IND</i> , <i>TX_IND</i>	4	mA
Pull up current (T=25 °C, VDDS=1.8 V)	71.7	µA
Pull down current (T=25 °C, VDDS=1.8 V)	21.1	µA
Pull up current (T=25 °C, VDDS=3.8 V)	277	µA
Pull down current (T=25 °C, VDDS=3.8 V)	113	µA

Table 6: Pin characteristics

3 Pinout

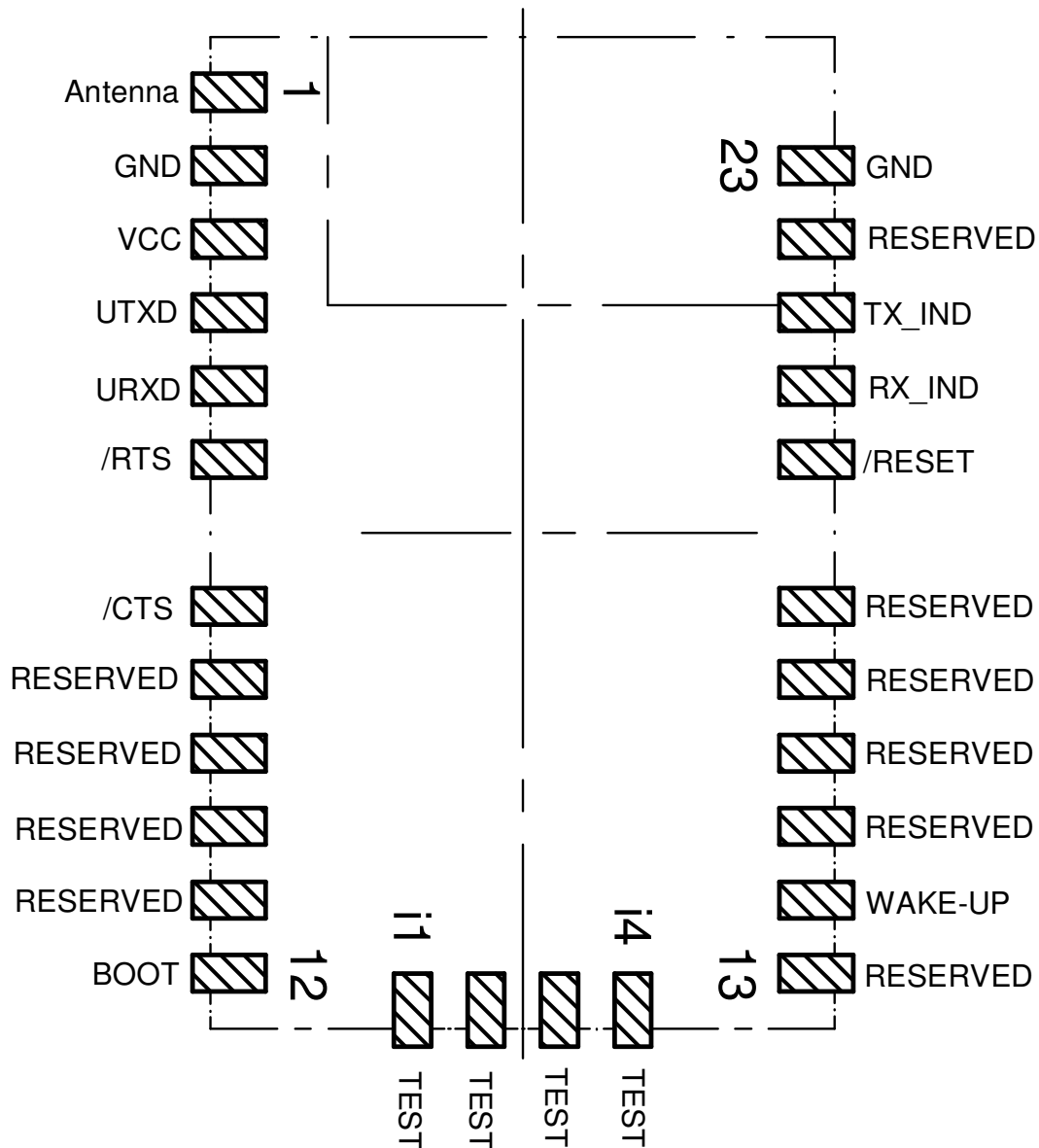


Figure 3: Pinout (top view)

No	Designation	I/O	Description
1	<i>ANT</i>		Antenna connector 50Ω used in Tarvos-III with external antenna only, RESERVED otherwise
2	<i>GND</i>	Supply	Ground
3	<i>VCC</i>	Supply	Supply voltage
4	<i>UTXD</i>	Output	UART module TX
5	<i>URXD</i>	Input	UART module RX, uses internal pull-up.
6	<i>/RTS</i>	Output	UART Flow Control. Module busy = HIGH.
7	<i>/CTS</i>	I/O	Reserved for future use. Uses an internal pull-up. Do not connect.
8	RESERVED	I/O	Reserved for future use. Uses an internal pull-down. Do not connect.
9	RESERVED	I/O	Reserved for future use. Uses an internal pull-down. Do not connect.
10	RESERVED	I/O	Reserved for future use. Uses an internal pull-down. Do not connect.
11	RESERVED	I/O	Reserved for future use. Uses an internal pull-down. Do not connect.
12	<i>BOOT</i>	Input	Apply LOW during and shortly after reset to start the application firmware. Apply HIGH during and shortly after reset to enable the UART bootloader.

No	Designation	I/O	Description
13	RESERVED	I/O	Reserved for future use. Uses an internal pull-down. Do not connect.
14	<i>WAKE-UP</i>	Input	Apply a falling edge to wake-up from shutdown or standby mode. Uses an internal pull-down.
15	RESERVED	I/O	Reserved for future use. Uses an internal pull-down. Do not connect.
16	RESERVED	I/O	Reserved for future use. Uses an internal pull-down. Do not connect.
17	RESERVED	I/O	Reserved for future use. Uses an internal pull-down. Do not connect.
18	RESERVED	I/O	Reserved for future use. Uses an internal pull-down. Do not connect.
19	<i>/RESET</i>	Input	Uses an internal pull-up. LOW holds the module in reset state.
20	<i>RX_IND</i>	Output	Indicates RF data reception, active = high.
21	<i>TX_IND</i>	Output	Indicates RF data transmission, active = high.
22	RESERVED	I/O	Reserved for future use. Uses an internal pull-down. Do not connect.
23	<i>GND</i>	Supply	Ground

No	Designation	I/O	Description
i1	<i>TEST</i>	Input	Debug interface. Do not connect.
i2	<i>TEST</i>	Input	Debug interface. Do not connect.
i3	<i>TEST</i>	Input	Debug interface. Do not connect.
i4	<i>TEST</i>	Input	Debug interface. Do not connect.

Table 7: Pinout

4 Quickstart

4.1 Minimal pin configuration

In factory state, the module is immediately ready for operation in command mode. The following pins are required in the minimal configuration:

/RESET, *BOOT*, *VCC*, *GND*, */RTS*, *UTXD* and *URXD*. The antenna pad *ANT* must be connected accordingly in case it is used.

If the module is to be connected to a PC, a converter cable/IC (3.3V TTL to USB) is necessary to achieve interface compatibility. The Tarvos-III -EV already implements such a USB converter to be connected to a PC. Not interpreting the */RTS* line of the module as described in this manual may cause undefined behavior and data loss.

For enabling a quick wake-up (after Standby) the pin *WAKE-UP* has to be connected.

The lines *BOOT* and *WAKE-UP* may be connected via external pull-up / down to a fixed level according to their description when not switched by a host.

In case of the *WAKE-UP* pin the external pull-up has to be selected accordingly in comparison with the internal resistor of typical 13k Ω .

4.2 Power up

Recommended procedure for starting the module into normal operation:

Set and hold the *BOOT* and *RESET* pin to LOW.

After supply voltage is applied to the module and has stabilized, the */RESET* pin shall be tied to LOW level for another Δt of at least 1ms to ensure a safe start-up when releasing or applying HIGH to the */RESET* pin.

The module will send a *CMD_RESET_IND* UART message as well as pulling the */RTS* line to LOW once it has booted and started the application.

Then the *BOOT* pin may be either released or kept at LOW level.

If the module is used on a battery-powered system, using a matching reset-IC (or a discrete RC block for a delay) is highly recommended to ensure a correct power up and stable behavior towards a battery getting empty.



Applying a reset (e.g. a host temporarily pulling the */RESET* pin LOW for at least 1ms and releasing it again to HIGH) after the VCC is stable is also sufficient.

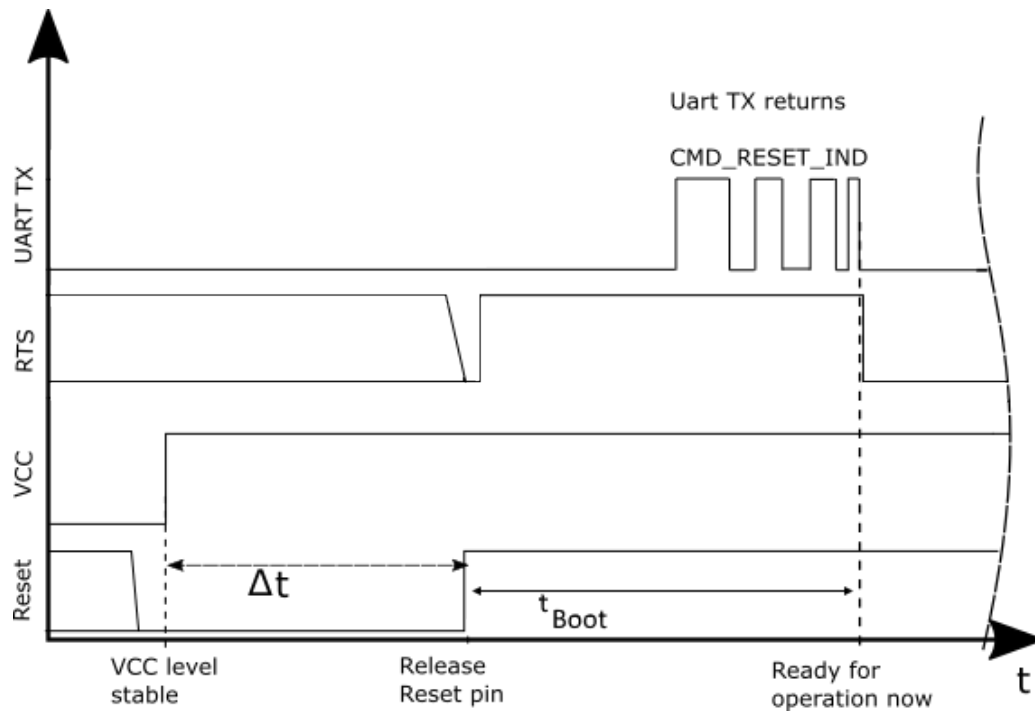


Figure 4: Power up

4.3 Quickstart example

Sending and receiving: Hello World

Connect the two devices (modules, EV-boards or USB dongles) to a PC. You may need to install FTDI VCP drivers manually (see) or using windows update. A minimum distance of 2 meters between the two devices should be kept at all time to avoid over modulation of the receiver.

A terminal program, for example *hterm*, is used to perform the communication via COM ports. The two corresponding COM ports have to be selected and opened with a default configuration of 115200 baud, 8 Data Bits, 1 Stop Bit and Parity set to none (8n1).

Baud	115200	Data	8	Stop	1	Parity	None
------	--------	------	---	------	---	--------	------

Make sure the received data is shown also as hex by enabling the corresponding checkbox:

<input checked="" type="checkbox"/> Ascii	<input checked="" type="checkbox"/> Hex
---	---

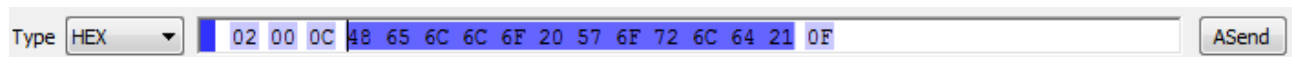
As soon as the module is ready for operation (at start-up or after a reset), the device sends a CMD_RESET_IND message on the UART. Eventually the reset button has to be pushed (or CMD_RESET_REQ performed) to trigger a reset and see this message.

Next, the command interface can be used to configure the module or to transmit data. The MAC_DefaultAddressMode is 0, which means that all radio frames are broadcasts that can be received by any other radio compatible device in default settings.

To send the string "Hello World" the corresponding CMD_DATA_REQ has to be inserted into the input line of hterm. The "Type" needs to be change from "ASC" to "HEX" before entering the first byte. The command CMD_DATA_REQ has the following structure:

Start signal	Command	Length	Payload	CS
0x02	0x00	1 Byte	Length Bytes	1 Byte

In this example the payload 0x48 0x65 0x6C 0x6C 0x6F 0x20 0x57 0x6F 0x72 0x6C 0x64 0x21 (Hello World!) has a length of 12 (0x0C) Bytes. The checksum CS is a XOR conjunction of all previous bytes, which is 0x0F in this case.



Using the "ASend" button followed by pushing the "Start" button sends the data once. The second module receiving this packet outputs a CMD_DATAEX_IND message containing the transmitted payload data and the corresponding RSSI value.

Clear received

☒ Ascii
☒ Hex
☐ Dec
☐ Bin

Save output

Received Data

1	2	3	4	5	6	7	8	9	10	11	12	13	14	15	16	17
□	□	☐	H	e	l	l	o		W	o	r	l	d	!	□	V
02	81	0D	48	65	6C	6C	6F	20	57	6F	72	6C	64	21	D9	56

In the default address mode (MAC_DefaultAddressMode = 0), the format of the CMD_DATAEX_IND is as follows:

Start signal	Command	Length	Payload	RSSI	CS
0x02	0x00	1 Byte	(Length-1) Bytes	1 Byte	1 Byte

Thus, the CMD_DATAEX_IND message informs us that we received a packet with payload of 13 (0x0D) Bytes. 12 byte of these Bytes are the transmitted user payload 0x48 0x65 0x6C 0x6C 0x6F 0x20 0x57 0x6F 0x72 0x6C 0x64 0x21 (Hello World!) and one byte is the RSSI value, here 0xD9 (-39dBm in two's complement notation).

5 Functional description

The Tarvos-III can be configured to operate in several modes at the physical, MAC as well as the network layer. This chapter describes all the available modes of operation.

5.1 Physical layer

At the physical layer, the Tarvos-III can be configured to use one of the following radio profiles (see parameter `RADIO_DefaultRfProfile`).

Radio profiles 3 and 4 are optimized to provide long range transmission with small payloads, whereas profile 5 enables a higher data rate and payload size.

Radio profile	Data rate (gross) [kcps]	Modulation	Max packet size [Byte]
0	38.4	FSK	128
2	100	FSK	128
3 (long range mode)	10 (=0.625 kbps net)	FSK (with FEC)	48
4 (long range mode)	20 (=2.5 kbps net)	FSK (with FEC)	64
5	400	GFSK	224

Additionally, the frequency channel of operation is configurable to avoid interference between several subnets of radio devices (see `RADIO_DefaultRfChannel`). The radio parameters need to be chosen for optimal performance based on the required range, data rate, maximum payload size, keeping in mind the compliance with valid regulatory requirements. A detailed description for configuring these parameters could be found in chapter 7 and chapter 8.

5.2 MAC and network layer

5.2.1 Addressing modes

In order to interconnect several modules and build a network or to send data to specific devices, the Tarvos-III supports addressing at MAC and network levels. Based on the address mode of the module configured using the UserSetting `MAC_DefaultAddressMode`, each device can be configured with an address (1 or 2 byte) and a network id (1 byte) that is defined by the UserSettings `MAC_SourceAddr` and `MAC_SourceNetID` respectively.

Address mode	MAC address size [Byte]	Network address size [Byte]
0	0	0
1	1	0
2	1	1
3	2	1

Depending on the selected address mode up to 254 network IDs and up to 65534 addresses are supported. 0xFF and 0xFFFF are used as broadcast addresses.



Please note that the RF settings (e.g. RF profile, RF channel, address mode, repeater settings) must be the same for all nodes in the network. Violation may cause interrupted transmission, or received packets that cannot to be interpreted correctly. In addition, the timing parameters in case of repeater or enabled ACKs must be the same for all nodes in a network. The address mode 3 (254 network ids and 65534 addresses) is only supported by the Tarvos-II and Tarvos-III. Radio messages of devices that are using the same radio channel may interfere with each other leading to possible collisions and packet loss.

5.2.2 Unicast

A module can use the command `CMD_DATA_REQ` to send data to a pre-defined destination specified by the parameters `MAC_DefaultDestAddr` and `MAC_DefaultDestNetID`. Besides this, the command `CMD_DATAEX_REQ` triggers the data transmission to the address specified in the command.

5.2.3 Multicast/Broadcast

The destination address or destination network id of `0xFF` (255) or `0xFFFF` (65535) stands for a broadcast which will trigger any compatible receiver to interpret this frame to forward it to its host.

5.2.4 Acknowledgement and retries

In order to improve reliability in communication, the module can be configured to use radio acknowledgement and retry mechanism. It can be activated using the parameter `MAC_NumRetrys` accordingly and only in case of non-broadcast messages.

5.2.5 Packet sniffer mode

The address resolution can be disabled ("packet sniffer") by enabling the sniffer mode in the UserSetting `CfgFlags`. A module in sniffer mode will accept all data packets (ignoring the target address) and forward them to the serial interface. Furthermore, it does not send any acknowledgement and cannot work as repeater at the same time (see section 13).

5.2.6 Repeater mode and mesh network

The module can be run as a repeater to artificially extend the range of sending devices in an existing network. A module configured as repeater, simply re-transmits the received packet after a random back off time. This mode allows options to build a flooding mesh network described in detail in chapter 13.

5.3 System configuration parameters

The parameters that determine the functionality of the module are classified into two categories. The non-volatile UserSettings (see chapter 8) values that can be modified using the `CMD_SET_REQ` command retain their values after a power reset.



Please note that each `CMD_SET_REQ` will consume one flash erase/write cycle, which are limited due to the hardware (guaranteed are 100k cycles, see TI C-C13x0 datasheet).

On the other hand, the volatile settings (called "RuntimeSettings") can be accessed by explicit commands (see chapter 7.4) and used to quickly (but temporarily) modify specific parameters without using flash cycles. These settings are only valid until a reset is performed and shall be used when frequent updates of settings are necessary.

6 Host connection

6.1 Serial interface: UART

The configuration in factory state of the UART is 115200 baud with data format of 8 data Bits, no parity and 1 stop Bit ("8n1"). The baud rate of the UART can be configured by means of the UserSetting `UART_Baudrate`. The data format is fixed to 8n1.

The output of characters on the serial interface runs with secondary priority. For this reason, short interruptions may occur between the outputs of individual successive Bytes. The host must not implement too strict timeouts between two Bytes to be able to receive packets that have interruptions in between. Up to four full byte durations (32 Bit) delay between two successive Bytes shall be accepted by the host.

For the direction "host to module" the host must respect byte-wise the line `/RTS`, which will indicate that the next byte of the packet can be received by the module. This direction also accepts a pause of up to four full byte durations (32Bit) delay between two successive Bytes before discarding received content (without user notification).

7 The command interface

7.1 Overview

The module acts as a slave and can be fully controlled by an external host. The configuration as well as the operation of the module can be managed by predefined commands that are sent as telegrams over the UART interface of the module.

The commands of the command interface can be divided into 3 groups:

- **Requests:** The host requests the module to trigger any action, e.g. in case of the request `CMD_RESET_REQ` the host asks the module to perform a reset.
- **Confirmations:** On each request, the module answers with a confirmation message to give a feedback on the requested operation status. In case of a `CMD_RESET_REQ`, the module answers with a `CMD_RESET_CNF` to tell the host whether the reset will be performed or not.
- **Indications and Responses:** The module indicates spontaneously when a special event has occurred. The `CMD_DATAEX_IND` indicates for example that data was received via radio.

Start signal	Command	Length	Payload	CS
0x02	1 Byte	1 Byte	Length Bytes	1 Byte

Start signal 0x02 (1 Byte)

Command One of the predefined commands (1 Byte), the module implements new and modified commands in comparison to other radio compatible modules.

Length Specifies the number of payload data in the following field.

Payload Variable number (defined by the length field) of data or parameters.

Checksum Byte wise XOR combination of all preceding Bytes including the start signal, i.e.
 $0x02 \wedge \text{Command} \wedge \text{Length} \wedge \text{Payload} = \text{CS}$

All commands of type Request must obey the following rules:

- Only one request at a time may be active. Wait for confirmation of the previous request and implement a suiting timeout (depends on the command or action that was requested, 500ms should cover the worst-case time).
- Indications are spontaneous messages, they may occur in between a command request and its confirmation.
- A high `/RTS` line signalizes that the module UART is not ready for reception. Thus, any byte(s) sent from the host will be discarded by the module without further user notification ("module busy"). If "module busy" occurs while sending a command to the module, it is necessary to resend this entire command again after `/RTS` pin status shows "module idle" again.

7.2 Data transfer and reception in the command mode

This group of commands include the commands that either are used to request a radio telegram to be send or indicates a received frame.

7.2.1 CMD_DATA_REQ

This command serves the simple data transfer in the command mode. Transmission takes place on the configured channel to the previously parametrised destination address (taken from the volatile RuntimeSettings). This command is especially suitable for transmission for a point-to-point connection. The maximum number of payload data Bytes depends on the chosen RADIO_DefaultRfProfile.

Format:

Start signal	Command	Length	Payload	CS
0x02	0x00	1 Byte	Length Bytes	1 Byte

Response (CMD_DATA_CNF):

Start signal	Command 0x40	Length	Status	CS
0x02	0x40	0x01	1 Byte	1 Byte

Status:

0x00: ACK received or not requested (MAC_NumRetrys is 0, MAC_DefaultAddressMode is 0 or a broadcast address is set as destination address)

0x01: no ACK received within a time-out after using all MAC_NumRetrys

0xFF: invalid (payload too long)

7.2.2 CMD_DATAEX_REQ

This command serves data transfer in a network with several parties. Both the RF channel to use and the destination address (depending on the parametrised address mode) are specified along with the command. The maximum number of payload data Bytes depends on the chosen RADIO_DefaultRfProfile. The entered channel, destination network and destination address are loaded into the volatile RuntimeSettings and thus are kept until the system is reset or these values are modified again.



Please note that the format of this command depends on the configured MAC_DefaultAddressMode.

Address mode 0:

Start signal	Command	Length	Channel	Payload	CS
0x02	0x01	Payload len. + 1	1 Byte	Payload len. Bytes	1 Byte

Address mode 1:

Start signal	Command	Length	Channel	Dest. address	Payload	CS
0x02	0x01	Payload len. + 2	1 Byte	1 Byte	Payload len. Bytes	1 Byte

Address mode 2:

Start signal	Command	Length	Channel	Dest. netID	Dest. address	Payload	CS
0x02	0x01	Payload len. + 3	1 Byte	1 Byte	1 Byte	Payload len. Bytes	1 Byte

Address mode 3:

Start signal	Command	Length	Channel	Dest. netID	Dest. address	Payload	CS
0x02	0x01	Payload len. + 4	1 Byte	1 Byte	2 Byte (LSB first)	Payload len. Bytes	1 Byte

Response:

Start signal	CMD_DATA_REQ 0x40	Length	Status	CS
0x02	0x40	0x01	1 Byte	1 Byte

Status:

0x00: ACK received or not requested (MAC_NumRetrys is 0, MAC_DefaultAddressMode is 0 or a broadcast address is set as destination address)

0x01: no ACK received within a time-out after using all MAC_NumRetrys

0x02: invalid channel selected

0xFF: invalid (payload too long)

7.2.3 CMD_DATAEX_IND

This telegram indicates the reception of data Bytes and represents the counterpart to the commands CMD_DATA_REQ and CMD_DATAEX_REQ. Apart from the RX field strength (RSSI value given in two's complement notation), this telegram also displays the source address of the sending device (depending on the parametrised address mode).



Please note that the format of this command depends on the configured MAC_DefaultAddressMode.

Format in address mode 0:

Start signal	Command	Length	Payload	Field strength	CS
0x02	0x81	Payload len. + 1	Payload len. Bytes	1 Byte	1 Byte

Format in address mode 1:

Start signal	Command	Length	Sender address	Payload	Field strength	CS
0x02	0x81	Payload len. + 2	1 Byte	Payload len. Bytes	1 Byte	1 Byte

Format in address mode 2:

Start signal	Command	Length	Sender network id	Sender address	Payload	Field strength	CS
0x02	0x81	Payload len. + 3	1 Byte	1 Byte	Payload len. Bytes	1 Byte	1 Byte

Format in address mode 3:

Start signal	Command	Length	Sender network id	Sender address	Payload	Field strength	CS
0x02	0x81	Payload len. + 4	1 Byte	2 Byte (LSB first)	Payload len. Bytes	1 Byte	1 Byte

7.2.4 CMD_REPEAT_IND

This command indicates that the module has repeated a data packet when acting in repeater mode. The source address and network id is the address of the origin sender of the RF packet, the destination address and network id is the address of the device that is supposed to receive the RF packet.

Format in address mode 0:

Start signal	Command	Length	Status	Address mode	CS
0x02	0x80	0x02	1 Byte	0x00	1 Byte

Format in address mode 1:

Start signal	Command	Length	Status	Address mode	Dest. address	Source address	CS
0x02	0x80	0x04	1 Byte	0x01	1 Byte	1 Byte	1 Byte

Format in address mode 2:

Start signal	Com.	Length	Status	Address. mode	Dest. NetID	Dest. address	Source NetID	Source address	CS
0x02	0x80	0x06	1 Byte	0x02	1 Byte	1 Byte	1 Byte	1 Byte	1 Byte

Format in address mode 3:

Start signal	Com.	Length	Status	Address. mode	Dest. NetID	Dest. address	Source NetID	Source address	CS
0x02	0x80	0x08	1 Byte	0x02	1 Byte	2 Byte (LSB first)	1 Byte	2 Byte (LSB first)	1 Byte

Status:

0x00: OK

0x01: Failed

7.3 Requesting parameters, actions and events

This group includes all commands that will return read-only parameters or request actions in the module.

7.3.1 CMD_RESET_REQ

This command triggers a software reset of the module. The reset is performed after the acknowledgment is transmitted. All volatile settings are initialized with their defaults.

Format:

Start signal	Command	Length	CS
0x02	0x05	0x00	0x07

Response (CMD_RESET_CNF):

Start signal	Command 0x40	Length	Status	CS
0x02	0x45	0x01	1 Byte	1 Byte

Status:

0x00: Request successfully received and processed

0x01: Request not successful

As soon as the module has restarted a CMD_RESET_IND is printed on the UART and the /RTS line will show "module idle".

7.3.2 CMD_RESET_IND

This message indicates that the module has restarted. After the /RTS line is low and the start-up time-out has passed, the module is ready to receive UART data and radio frames.

Start signal	Command	Length	Mode	CS
0x02	0x85	0x01	0x10	0x96

7.3.3 CMD_SHUTDOWN_REQ

This command triggers the shut down mode of the chip, which is the mode with lowest power consumption. The shut down is performed after the command confirmation message is transmitted. The UART interface is disabled in shut down mode.

Format:

Start signal	Command	Length	CS
0x02	0x0E	0x00	0x0C

Response (CMD_SHUTDOWN_CNF):

Start signal	Command 0x40	Length	Status	CS
0x02	0x4E	0x01	1 Byte	1 Byte

Status:

0x00: Request successfully received and processed

0x01: Request not successful

To wake-up from shut down mode, a falling edge has to be applied to the *WAKE-UP* pin. In this case, the module restarts such that all volatile settings are lost. As soon as it has restarted a *CMD_RESET_IND* message is printed on the UART. Please note that in shut down mode, the *WAKE-UP* pin has an internal pull-down to ensure the wake-up is not performed accidentally due to a floating pin.

7.3.4 CMD_STANDBY_REQ

This command triggers the standby mode of the chip, a low power mode with RAM retention. The standby mode is entered after the command confirmation message is transmitted. The UART interface is disabled in standby mode. The latency is smaller than the latency caused by a complete restart of the module as done in the shut down mode.

Format:

Start signal	Command	Length	CS
0x02	0x0F	0x00	0x0D

Response (*CMD_STANDBY_CNF*):

Start signal	Command 0x40	Length	Status	CS
0x02	0x4F	0x01	1 Byte	1 Byte

Status:

0x00: Request successfully received and processed

0x01: Request not successful

To wake-up from standby mode, a falling edge has to be applied to the *WAKE-UP* pin. Please note that in standby mode, the *WAKE-UP* pin has an internal pull-down to ensure the wake-up is not performed accidentally due to a floating pin. When a falling edge is detected, the module wakes up but does not revert to factory settings as the RAM content is retained and all volatile settings are kept. Upon being idle again, a *CMD_STANDBY_IND* message is printed on the UART and the */RTS* pin will show a low level.

7.3.5 CMD_STANDBY_IND

This message indicates that the module woke up from standby mode and is ready for operation.

Start signal	Command 0x80	Length	Status	CS
0x02	0x8F	0x01	0x00	0x8C

Status:

0x00: wake-up successful

7.3.6 CMD_RSSI_REQ

This command returns the RX level of the last received packet determined by the transceiver IC in the form of a signed two's complement. The current RSSI value of the radio IC ("live RSSI value") cannot be requested by means of this command.

Format:

Start signal	Command	Length	CS
0x02	0x0D	0x00	0x0F

Response (CMD_RSSI_CNF):

Start signal	Command 0x40	Length	RX level	CS
0x02	0x4D	0x01	1 Byte	1 Byte

The value obtained in this way delivers the RX level $RSSI_{dBm}$ in dBm as follows.

Example: Conversion of the hexadecimal value in two's complement notation to a decimal $RSSI_{dec}$

$$0xDB_{hex} = 10111101_{bin} \Rightarrow$$

$$-128 + 0 \times 64 + 1 \times 32 + 1 \times 16 + 1 \times 8 + 1 \times 4 + 0 \times 2 + 1 \times 1 = -67dBm$$



If the RSSI equals 0x80 (-128dBm), there is no RSSI value available yet.

7.4 Modification of volatile parameters

This group contains all functions that will modify RuntimeSettings while the module is running. These settings are volatile and will be reset to their defaults (see chapter 8) on a reset of the module or when waking up after a shut down command.

7.4.1 CMD_SET_PAPOWER_REQ

This command is used to set the radio TX-power. Unlike the UserSettings parameter `RADIO_DefaultRfTXPower`, this is a volatile runtime parameter, but it's power value is used in the same way. Thus, see section 8.2.3 for more information.



The parameter must be chosen with prudence to reach good functionality and compliance with valid regulatory requirements as for example the EN 300 220 in the European Union or the FCC in the United States of America.

The power value is entered in the complement on two format.
Format:

Start signal	Command	Length	Power	CS
0x02	0x11	0x01	1 Byte	1 Byte

Response (CMD_SET_PAPOWER_CNF):

Start signal	Command 0x40	Length	Configured power	CS
0x02	0x51	0x01	1 Byte	1 Byte

7.4.1.1 Example

Setting the power to +14 dBm:

Start signal	Command	Length	Configured power	CS
0x02	0x11	0x01	0x0E	0x1C

Response:

Start signal	Command 0x40	Length	Configured power	CS
0x02	0x51	0x01	0x0E	0x5C

7.4.2 CMD_SET_CHANNEL_REQ

This command is used to select the radio channel. Unlike the UserSettings parameter `RADIO_DefaultRfChannel`, this is a volatile runtime parameter.



The parameter must be chosen with prudence to reach good functionality (radio environment dependent) and compliance with valid regulatory requirements as the EN 300 220 in the European Union or the FCC in the United States of America.

Format:

Start signal	Command	Length	Channel	CS
0x02	0x06	0x01	1 Byte	1 Byte

Response (CMD_SET_CHANNEL_CNF):

Start signal	Command 0x40	Length	Configured channel	CS
0x02	0x46	0x01	1 Byte	1 Byte

7.4.2.1 Example

Selection of channel 108:

Start signal	Command	Length	channel	CS
0x02	0x06	0x01	0x6C	0x69

Response:

Start signal	Command 0x40	Length	Configured channel	CS
0x02	0x46	0x01	0x6C	0x29

7.4.3 CMD_SET_DESTNETID_REQ

This command serves to configure the Dest. netID in address mode 2 and 3. Unlike the UserSettings parameter MAC_DefaultDestNetID, this is a volatile runtime parameter.

Format:

Start signal	Command	Length	Dest. netID	CS
0x02	0x07	0x01	1 Byte	1 Byte

Return (CMD_SET_DESTNETID_CNF):

Start signal	Command 0x40	Length	Status	CS
0x02	0x47	0x01	1 Byte	1 Byte

Status:

0x00: Request successfully received and processed

0x01: Request not successful

7.4.4 CMD_SET_DESTADDR_REQ

This command serves to configure the destination address in address modes 1, 2 and 3. Unlike the UserSettings parameter MAC_DefaultDestAddr, this is a volatile runtime parameter.

Format: Mode 1 + 2:

Start signal	Command	Length	Dest. address	CS
0x02	0x08	0x01 or 0x02	1 Byte or 2 Byte	1 Byte

Response (CMD_SET_DESTADDR_CNF):

Start signal	Command 0x40	Length	Status	CS
0x02	0x48	0x01	1 Byte	1 Byte

Status:

0x00: Request successfully received and processed

0x01: Request not successful

7.5 Modification of non-volatile parameters

The non-volatile parameters are also called UserSettings and are stored in a special flash location. This settings can also be configured using our windows pc software "ACC".

7.5.1 CMD_SET_REQ

This command enables direct manipulation of the parameters in the module's non-volatile UserSettings. The respective parameters are accessed by means of the corresponding SettingsIndex. Parameters with size of two or more Bytes have to be transferred with the LSB first unless otherwise specified.



The modified parameters only take effect after a restart of the module. This can be done by a CMD_RESET_REQ or using the /RESET pin.



The validity of the specified parameters is not verified by the application. Incorrect values can result in device malfunction up to a scenario where the firmware of the module needs to be re-flashed to get it operating again!



Any use of CMD_SET_REQ will consume one flash erase/write cycle. Flash erase/write cycles are limited through hardware (guaranteed minimum 100k cycles). For frequently changing parameters use the volatile parameters "RuntimeSettings", see chapter 7.4.



To store the parameters in the flash memory of the module, the particular memory segment must be buffered into RAM, then to be erased entirely and then restored from RAM.

If a reset or VCC instability occurs during this procedure (e.g. due to supply voltage fluctuations), the entire memory area may be destroyed and the module can only be resurrected by means of a JTAG or Bootloader firmware update.

Recommended procedure: First verify the configuration of the module with CMD_GET_REQ and only apply a CMD_SET_REQ if required. Make sure the VCC is stable and no reset occurs during this procedure.

Format:

Start signal	Command	Length	SettingsIndex	Parameter	CS
0x02	0x09	1 Byte	1 Byte	(Length - 1) Bytes	1 Byte

Response (CMD_SET_CNF):

Start signal	Command 0x40	Length	Status	CS
0x02	0x49	0x01	1 Byte	1 Byte

Status:

0x00: Request successfully received and processed

0x01: Operation failed due to invalid parameter

7.5.2 CMD_GET_REQ

This command can be used to query the UserSettings parameters. The respective parameters are accessed by means of the corresponding SettingsIndex.



Parameters with size of two or more Bytes will be transmitted LSB first unless noted otherwise.

Format:

Start signal	Command	Length	SettingsIndex	CS
0x02	0x0A	0x01	1 Byte	1 Byte

Response (CMD_GET_CNF):

Start signal	Command 0x40	Length	Status	Parameter	CS
0x02	0x4A	1 Byte	1 Byte	(Length - 1) Bytes	1 Byte

Status:

0x00: Request successfully received and processed

0x01: Request not successful

7.5.3 CMD_FACTORY_RESET_REQ

This command restores the default UserSettings of the module. If this was successful, a software reset of the module is performed in addition.

Format:

Start signal	Command	Length	CS
0x02	0x12	0x00	0x10

Response (CMD_FACTORY_RESET_CNF):

Start signal	Command 0x40	Length	Status	CS
0x02	0x52	0x01	1 Byte	1 Byte

Status:

0x00: Request successfully received and processed

0x01: Request not successful

7.6 Message overview

CMD	Message name	Short description	Chapter
0x00	CMD_DATA_REQ	Send data to configured address	7.2.1
0x01	CMD_DATAEX_REQ	Send data to specific address	7.2.2
0x05	CMD_RESET_REQ	Reset module	7.3.1
0x06	CMD_SET_CHANNEL_REQ	Change the RF channel	7.4.2
0x07	CMD_SET_DESTNETID_REQ	Set the destination network id	7.4.3
0x08	CMD_SET_DESTADDR_REQ	Set the destination address	7.4.4
0x09	CMD_SET_REQ	Change the UserSettings	7.5.1
0x0A	CMD_GET_REQ	Read the UserSettings	7.5.2
0x0D	CMD_RSSI_REQ	Request RSSI of last packet	7.3.6
0x0E	CMD_SHUTDOWN_REQ	Go to shut down mode	7.3.3
0x0F	CMD_STANDBY_REQ	Go to standby mode	7.3.4
0x11	CMD_SET_PAPOWER_REQ	Change the radio TX power	7.4.1
0x12	CMD_FACTORY_RESET_REQ	Perform a factory reset	7.5.3
0x40	CMD_DATA_CNF	Data has been sent	7.2.1
0x45	CMD_RESET_CNF	Reset request received	7.3.1
0x46	CMD_SET_CHANNEL_CNF	Channel has been updated	7.4.2
0x47	CMD_SET_DESTNETID_CNF	Destination network id has been updated	7.4.3
0x48	CMD_SET_DESTADDR_CNF	Destination address has been updated	7.4.4
0x49	CMD_SET_CNF	UserSettings have been updated	7.5.1
0x4A	CMD_GET_CNF	Return the requested UserSetting values	7.5.2
0x4D	CMD_RSSI_CNF	Return the requested RSSI value	7.3.6
0x4E	CMD_SHUTDOWN_CNF	Shut down request received	7.3.3
0x4F	CMD_STANDBY_CNF	Standby request received	7.3.4
0x51	CMD_SET_PAPOWER_CNF	RF TX power has been updated	7.4.1
0x52	CMD_FACTORY_RESET_CNF	Factory reset request received	7.5.3
0x80	CMD_REPEAT_IND	Data has been repeater	7.2.4
0x81	CMD_DATAEX_IND	Data has been received	7.2.3
0x85	CMD_RESET_IND	Reset has been applied	7.3.2
0x8F	CMD_STANDBY_IND	Woke up from standby mode	7.3.5

Table 8: Message overview

8 UserSettings - Module configuration values

8.1 Difference between volatile and non-volatile settings

The so-called UserSettings are stored permanently into the internal flash of the module. At start-up, these UserSettings are loaded as start values into the volatile settings ("RuntimeSettings"). Some of the RuntimeSettings can be modified by special commands (see chapter 7.4). These RuntimeSettings are lost and replaced by the UserSettings content when the module is restarted.



See chapters 7.4 and 7.5 for methods to change volatile and/or non-volatile settings.

The non-volatile UserSettings can be modified by means of specific commands in the configuration mode (CMD_SET_REQ) of the module. These parameters are stored permanently in the module's flash memory. All settings are described on the following pages. After changing those parameters, a reset will be necessary to make use of the new settings.



The validity of the specified parameters given with a CMD_SET_REQ is not verified. Incorrect values can result in device malfunction and may even result in the need of re-flashing the entire module firmware!

8.2 Modifying the UserSettings

The following chapters will give examples for the modification for many parameters using the commands CMD_SET_REQ and CMD_GET_REQ. The PC software ACC (AMBER Config Center, version 3.4.3 or newer) can also be used to change non-volatile parameters.

8.2.1 UART_Baudrate: Configure the UART speed

Settings index	Designation	Permissible values	Default value	Permissions	Number of Bytes
0	UART_Baudrate	9600 - 921600	115200	read/write	4

The UserSetting UART_Baudrate is a 32 Bit field that contains the symbol rate for the communication interface. The format for the parameter value is LSB first.



After changing the baud rate using the CMD_SET_REQ the module restarts using the new baud rate. Thus, please do not forget to update the baud rate of the connected host controller to be able to use the module's UART further on.



Please double check that the Byte-order of the parameter. It is to be used *LSB first*. Wrong values may lead to a condition where talking with the module is not possible anymore.

8.2.1.1 Example 1

Set the baud rate of the module to 9600 baud (0x00002580_{MSBfirst} corresponds to 0x80250000_{LSBfirst}) using the CMD_SET_REQ with Settings index 0:

Start signal	Command	Length	Settings index	Parameter	CS
0x02	0x09	0x05	0x00	0x80 0x25 0x00 0x00	0xAB

Response CMD_SET_CNF: Successfully modified the setting.

Start signal	Command 0x40	Length	Status	CS
0x02	0x49	0x01	0x00	0x4A

8.2.1.2 Example 2

Request the baud rate of the module using CMD_GET_REQ:

Start signal	Command	Length	Settings index	CS
0x02	0x0A	0x01	0x00	0x09

Response CMD_GET_CNF: Successfully read out the baud rate 0x00002580 (9600 baud).

Start signal	Command 0x40	Length	Status	Parameter	CS
0x02	0x4A	0x05	0x00	0x80 0x25 0x00 0x00	0xE8

8.2.2 RADIO_DefaultRfProfile: Configure the RF-settings

Settings index	Designation	Permissible values	Default value	Permissions	Number of Bytes
1	RADIO_DefaultRfProfile	0,2,3,4,5	0	read/write	1

The UserSetting `RADIO_DefaultRfProfile` is an 8 Bit field that addresses the applied RF configuration.



The parameter must be chosen with prudence to reach good functionality and compliance with valid regulatory requirements as the EN 300 220 in the European Union or the FCC in the United States of America.



After modification of the `RADIO_DefaultRfProfile`, please check whether the `RADIO_DefaultRfChannel` has to be updated too.

Radio profile	Data rate (gross) [kcps]	Modulation	Max packet size [Byte]	Max packet duration [ms]
0	38.4	FSK	128	40
2	100	FSK	128	20
3 (LRM)	10 (=0.625 kbps net)	FSK (with FEC)	48	1000
4 (LRM)	20 (=2.5 kbps net)	FSK (with FEC)	64	300
5	400	GFSK	224	10

Table 9: Radio profiles



Due to the low data rate in radio profiles 3 and 4 the packet size is reduced. The maximum allowed packet duration is 1000ms, respective 300ms. The receiver and sender will not accept larger packets than Max packet size Bytes.



To achieve the long range in profile 3 a high receiver sensitivity is needed and therefore a high frequency accuracy. For modules with hardware version 2.3 or newer (serial number 116.002001 or bigger), a temperature dependant compensation of the frequency is implemented for this profile to work properly over the whole temperature range of -40°C to 85°C. Modules with hardware version 2.2 or older do not have this compensation and may not work properly in radio profile 3 over the entire temperature range.



The repeater mode (flooding mesh) is currently only supported in profiles 0, 2 and 5.

8.2.2.1 Example 1

Set the radio profile to 0 using the CMD_SET_REQ:

Start signal	Command	Length	Settings index	Parameter	CS
0x02	0x09	0x02	0x01	0x00	0x08

Response CMD_SET_CNF: Successfully modified the setting.

Start signal	Command 0x40	Length	Status	CS
0x02	0x49	0x01	0x00	0x4A

8.2.2.2 Example 2

Request the radio profile using CMD_GET_REQ:

Start signal	Command	Length	Settings index	CS
0x02	0x0A	0x01	0x01	0x08

Response CMD_GET_CNF: Successfully read out the radio as 2.

Start signal	Command 0x40	Length	Status	Parameter	CS
0x02	0x4A	0x02	0x00	0x02	0x48

8.2.3 RADIO_DefaultRfTXPower: Configure the RF TX-power

Settings index	Designation	Permissible values	Default value	Permissions	Number of Bytes
2	RADIO_DefaultRfTXPower	0 - 14	14	read/write	1

This UserSetting defines the radio output power of the module. The UserSettings parameter RADIO_DefaultRfTXPower is entered as a complement on two. This value represents the power at the radio ic without taking the antenna into account.



The user is responsible for adhering to the statutory regulations for the maximum power output when using this module. In case of the Tarvos-III with an external antenna the antenna gain needs to be taken into account, too.

8.2.3.1 Example 1

Set the radio output power to 0 using the CMD_SET_REQ:

Start signal	Command	Length	Settings index	Parameter	CS
0x02	0x09	0x02	0x02	0x00	0x0B

Response CMD_SET_CNF: Successfully modified the setting.

Start signal	Command 0x40	Length	Status	CS
0x02	0x49	0x01	0x00	0x4A

8.2.3.2 Example 2

Request the radio output power using CMD_GET_REQ:

Start signal	Command	Length	Settings index	CS
0x02	0x0A	0x01	0x02	0x0B

Response CMD_GET_CNF: Successfully read out the radio as 0 dBm.

Start signal	Command 0x40	Length	Status	Parameter	CS
0x02	0x4A	0x02	0x00	0x00	0x48

8.2.4 RADIO_DefaultRfChannel: Configure the RF channel

Settings index	Designation	Permissible values	Default value	Permissions	Number of Bytes
3	RADIO_DefaultRfChannel	100 - 140	106	read/write	1

This UserSetting determines the wireless channel of the module to be used after a reset. The dependence between channel and frequency is as follows:

$$Channel_{RF} = \frac{Frequency_{RF} - 868.300MHz}{0.050MHz} \quad (1)$$

Check chapter 10.1 for more information.



The user is responsible for adhering to the statutory regulations for the frequency and spectrum use when using this module.

8.2.4.1 Example 1

Set the radio channel to 110 (0x6E) using the CMD_SET_REQ:

Start signal	Command	Length	Settings index	Parameter	CS
0x02	0x09	0x02	0x03	0x6E	0x64

Response CMD_SET_CNF: Successfully modified the setting.

Start signal	Command 0x40	Length	Status	CS
0x02	0x49	0x01	0x00	0x4A

8.2.4.2 Example 2

Request the radio channel using CMD_GET_REQ:

Start signal	Command	Length	Settings index	CS
0x02	0x0A	0x01	0x03	0x0A

Response CMD_GET_CNF: Successfully read out the radio as 110 (0x6E).

Start signal	Command 0x40	Length	Status	Parameter	CS
0x02	0x4A	0x02	0x00	0x6E	0x24

8.2.5 MAC_DefaultAddressMode: Configure the address mode

Settings index	Designation	Permissible values	Default value	Permissions	Number of Bytes
4	MAC_DefaultAddressMode	0 - 3	0	read/write	1

This setting defines the address mode of the module. The following modes have been implemented:

No addressing (mode 0): Each module receives the transmitted RF telegram and delivers the received data to the host system via UART. No address information is transmitted in the radio telegram.

1-byte address (mode 1): The receiving module only delivers the data to the host system via UART,

- if the 1 Byte destination address configured at the sender corresponds to the 1 Byte source address of the receiver (MAC_SourceAddr) or
- if the destination broadcast address 255 was specified.

Both, the destination address and the source address are transmitted in the wireless telegram (total = 2 Bytes).

2-Bytes address (mode 2): The receiving module only delivers the data to the host system via UART,

- if both the destination network id and the 1 Byte destination address configured at the sender correspond to the source addresses of the receiver (MAC_SourceNetID and 1 Byte MAC_SourceAddr) or
- if the destination broadcast address 255 and/or network broadcast id 255 was specified.

A total of 4 Bytes of address information are transmitted in the wireless telegram.

2-Bytes address (mode 3): The receiving module only delivers the data to the host system via UART,

- if both the destination network id and the 2 Byte destination address configured at the sender correspond to the source addresses (MAC_SourceNetID and 2 Byte MAC_SourceAddr) of the receiver or
- if the destination broadcast address 65535 and network broadcast id 255 was specified.

A total of 6 Bytes of address information are transmitted in the wireless telegram.



In address mode 0, the use of wireless acknowledgement will cause problems if several wireless modules are addressed simultaneously. Therefore, no ACK is requested when using address mode 0 or when having any broadcast address in the frame (destination net ID and/or destination address). The user shall also not set `MAC_NumRetrys` \neq 0 in address mode 0.



The receiver and transmitter modules must always operate in the same address mode! Otherwise, the receiver cannot interpret the received data packet meaning that the packet is discarded!

8.2.5.1 Example 1

Set the address mode to 2 using the CMD_SET_REQ:

Start signal	Command	Length	Settings index	Parameter	CS
0x02	0x09	0x02	0x04	0x02	0x0F

Response CMD_SET_CNF: Successfully modified the setting.

Start signal	Command 0x40	Length	Status	CS
0x02	0x49	0x01	0x00	0x4A

8.2.5.2 Example 2

Request the address mode using CMD_GET_REQ:

Start signal	Command	Length	Settings index	CS
0x02	0x0A	0x01	0x04	0x0D

Response CMD_GET_CNF: Successfully read out the address mode as 1.

Start signal	Command 0x40	Length	Status	Parameter	CS
0x02	0x4A	0x02	0x00	0x01	0x4B

8.2.6 MAC_NumRetrys: Configure the number of retries

Settings index	Designation	Permissible values	Default value	Permissions	Number of Bytes
6	MAC_NumRetrys	0 - 255	0	read/write	1

This UserSetting determines the maximum number of wireless transmission retries. If this parameter is set to a value other than zero, the receiver module will automatically be prompted to send a wireless acknowledgement ("ACK"). Please note that sending acknowledgements additionally increases the traffic and will have influence on the duty-cycle, which can be crucial for CE compliance.



This parameter shall only be enabled (i.e. set to another value than 0) if the parameter address mode selects a value of 1, 2 or 3 and the customer has configured unique addresses for the entire network. A use of broadcast messages (destination network ID and/or destination address) is not allowed when MAC_NumRetrys is set to any value not equal to 0.

8.2.6.1 Example 1

Set the transmission retry number to 1 using the CMD_SET_REQ:

Start signal	Command	Length	Settings index	Parameter	CS
0x02	0x09	0x02	0x06	0x01	0x0E

Response CMD_SET_CNF: Successfully modified the setting.

Start signal	Command 0x40	Length	Status	CS
0x02	0x49	0x01	0x00	0x4A

8.2.6.2 Example 2

Request the number of retries using CMD_GET_REQ:

Start signal	Command	Length	Settings index	CS
0x02	0x0A	0x01	0x06	0x0F

Response CMD_GET_CNF: Successfully read out the number of retries as 3.

Start signal	Command 0x40	Length	Status	Parameter	CS
0x02	0x4A	0x02	0x00	0x013	0x49

8.2.7 MAC_DefaultDestNetID: Configure the destination network id

Settings index	Designation	Permissible values	Default value	Permissions	Number of Bytes
7	MAC_DefaultDestNetID	0 - 255	255	read/write	1

This UserSetting specifies the default destination network ID, which is used in address modes 2 and 3. If the special broadcast id and the broadcast address are set to 255, the packets will be received by all network participants. Its volatile RuntimeSettings can be modified with the command CMD_SET_DESTNETID_REQ at runtime.

8.2.7.1 Example 1

Set the default destination network id to 1 using the CMD_SET_REQ:

Start signal	Command	Length	Settings index	Parameter	CS
0x02	0x09	0x02	0x07	0x01	0x0F

Response CMD_SET_CNF: Successfully modified the setting.

Start signal	Command 0x40	Length	Status	CS
0x02	0x49	0x01	0x00	0x4A

8.2.7.2 Example 2

Request the default destination network id using CMD_GET_REQ:

Start signal	Command	Length	Settings index	CS
0x02	0x0A	0x01	0x07	0x0E

Response CMD_GET_CNF: Successfully read out the default destination network id as 0.

Start signal	Command 0x40	Length	Status	Parameter	CS
0x02	0x4A	0x02	0x00	0x00	0x4A

8.2.8 MAC_DefaultDestAddr: Configure the destination address

Settings index	Designation	Permissible values	Default value	Permissions	Number of Bytes
8	MAC_DefaultDestAddr	0 - 65535	65535	read/write	1-2

This UserSetting specifies the destination address, which is used in address modes 1, 2 and 3. If a broadcast address (255 in address modes 1 and 2, or 65535 in address mode 3) is used, the packets will be received by all network participants or by participants in the same network id. Its volatile RuntimeSettings can be modified with the command CMD_SET_DESTADDR_REQ at runtime.

8.2.8.1 Example 1

Set the default destination address to 1 using the CMD_SET_REQ. If only one-byte parameter size is used, the LSB is set to the value of the parameter and the MSB is automatically written to 0xFF.

Start signal	Command	Length	Settings index	Parameter	CS
0x02	0x09	0x02	0x08	0x01	0x00

Response CMD_SET_CNF: Successfully modified the setting.

Start signal	Command 0x40	Length	Status	CS
0x02	0x49	0x01	0x00	0x4A

8.2.8.2 Example 2

Set the default destination address to 256 (0x0100) using the CMD_SET_REQ. LSB = 0x00, MSB = 0x01. The MSB of the address is used in address mode 3, only. The 2-byte parameter field has the order LSB first.

Start signal	Command	Length	Settings index	Parameter	CS
0x02	0x09	0x03	0x08	0x00 0x01	0x01

Response CMD_SET_CNF: Successfully modified the setting.

Start signal	Command 0x40	Length	Status	CS
0x02	0x49	0x01	0x00	0x4A

8.2.8.3 Example 3

Request the default destination address using CMD_GET_REQ:

Start signal	Command	Length	Settings index	CS
0x02	0x0A	0x01	0x08	0x01

Response CMD_GET_CNF: Successfully read out the default destination address as 0 (0x0000). The 2 byte parameter has the order LSB first. The return value of this Settings index is always read as 2 byte parameter.

Start signal	Command 0x40	Length	Status	Parameter	CS
0x02	0x4A	0x03	0x00	0x00 0x00	0x4B

8.2.9 MAC_SourceNetID: Configure the source network id

Settings index	Designation	Permissible values	Default value	Permissions	Number of Bytes
10	MAC_SourceNetID	0 - 254	0	read/write	1

This UserSetting specifies the source network id to be used in address modes 2 and 3. Setting the Source Net ID to Broadcast (255) is not allowed.

8.2.9.1 Example 1

Set the source network id to 1 using the CMD_SET_REQ:

Start signal	Command	Length	Settings index	Parameter	CS
0x02	0x09	0x02	0x0A	0x01	0x02

Response CMD_SET_CNF: Successfully modified the setting.

Start signal	Command 0x40	Length	Status	CS
0x02	0x49	0x01	0x00	0x4A

8.2.9.2 Example 2

Request the source network id using CMD_GET_REQ:

Start signal	Command	Length	Settings index	CS
0x02	0x0A	0x01	0x0A	0x03

Response CMD_GET_CNF: Successfully read out the source network id as 2.

Start signal	Command 0x40	Length	Status	Parameter	CS
0x02	0x4A	0x02	0x00	0x02	0x48

8.2.10 MAC_SourceAddr: Configure the source address

Settings index	Designation	Permissible values	Default value	Permissions	Number of Bytes
11	MAC_SourceAddr	0 - 65534	0	read/write	1-2

This UserSetting specifies the source device address to be used in address modes 1, 2 and 3. The LSB corresponds to the first byte in "parameter" the MSB (if used) to the second byte. The broadcast address 0xFF (255) or 0xFFFF (65535) must not be used for the source address (LSB, LSB+MSB) and source network id parameters.

8.2.10.1 Example 1

Set the source address to 1 (this will set the LSB to 0x01, the MSB is automatically set to 0xFF) using the CMD_SET_REQ:

Start signal	Command	Length	Settings index	Parameter	CS
0x02	0x09	0x02	0x0B	0x01	0x03

Response CMD_SET_CNF: Successfully modified the setting.

Start signal	Command 0x40	Length	Status	CS
0x02	0x49	0x01	0x00	0x4A

8.2.10.2 Example 2

Set the source address to 256 (LSB = 0x00, MSB = 0x01) using the CMD_SET_REQ. The 2 byte parameter is to be used LSB first.

Start signal	Command	Length	Settings index	Parameter	CS
0x02	0x09	0x03	0x0B	0x00 0x01	0x02

Response CMD_SET_CNF: Successfully modified the setting.

Start signal	Command 0x40	Length	Status	CS
0x02	0x49	0x01	0x00	0x4A

8.2.10.3 Example 3

Request the source address using CMD_GET_REQ:

Start signal	Command	Length	Settings index	CS
0x02	0x0A	0x01	0x0B	0x02

Response CMD_GET_CNF: Successfully read out the source address as 2 (0x0002). The 2 byte parameter is to be used LSB first.

Start signal	Command 0x40	Length	Status	Parameter	CS
0x02	0x4A	0x03	0x00	0x02 0x00	0x49

8.2.11 OpMode: Read the operating mode of the module

Settings index	Designation	Permissible values	Default value	Permissions	Number of Bytes
14	OpMode	16	16	read	1

The OpMode 0x10 (16) is indicating that the module is in command mode. Currently no other OpMode is available.

8.2.11.1 Example 1

Request the operation mode using CMD_GET_REQ:

Start signal	Command	Length	Settings index	CS
0x02	0x0A	0x01	0x0E	0x07

Response CMD_GET_CNF: Successfully read out that the operation mode is command mode (0x10).

Start signal	Command 0x40	Length	Status	Parameter	CS
0x02	0x4A	0x02	0x00	0x10	0x5A

8.2.12 CfgFlags: Configure the configuration flags of the module

Settings index	Designation	Permissible values	Default value	Permissions	Number of Bytes
15	CfgFlags	See description	0	read/write	2

This parameter is used for the general module configuration.



Repeater and sniffer mode cannot be enabled at the same time. A module configured as sniffer will not send any ACKs even if requested by the sender.

Bit no.	Filter	Description
0	0x0001	Set this Bit to '1' to enable the sniffer mode. The sniffer mode will ignore all destination addresses in the radio frames and forward any compatible message into a CMD_DATAEX_IND. Not to be used when repeater mode is enabled or MAC_NumRetrys is not equal to 0.
1 - 15	0xFFFE	Reserved for future use. All reserved Bits '0'.

8.2.12.1 Example 1

Enable the sniffer mode by setting the CfgFlags parameter value to 0x0001 using the CMD_SET_REQ. The 2 byte parameter is to be used LSB first.

Start signal	Command	Length	Settings index	Parameter	CS
0x02	0x09	0x03	0x0F	0x01 0x00	0x06

Response CMD_SET_CNF: Successfully modified the setting.

Start signal	Command	Length	Status	CS
0x02	0x49	0x01	0x00	0x4A

8.2.12.2 Example 2

Request the configuration flags using CMD_GET_REQ:

Start signal	Command	Length	Settings index	CS
0x02	0x0A	0x01	0x0F	0x06

Response CMD_GET_CNF: Successfully read out the value of CfgFlags. The 2 byte parameter is to be used LSB first. A parameter value 0x0000 indicates that the sniffer mode is disabled.

Start signal	Command 0x40	Length	Status	Parameter	CS
0x02	0x4A	0x03	0x00	0x00 0x00	0x4B

8.2.13 RpFlags: Configure the repeater flags of the module

Settings index	Designation	Permissible values	Default value	Permissions	Number of Bytes
16	RpFlags	See description	0	read/write	2

This parameter is used for the repeater configuration. See chapter 13 for more information about the repeater mode.



Repeater and sniffer mode cannot be enabled at the same time.



The repeater function shall not be enabled in radio profiles 3 and 4.



The user is responsible for adhering to the statutory regulations for the frequency and spectrum use when using the repeater mode with this module. Especially the duty-cycle of each repeating network node must be checked and controlled by the end system application in respect to CE compliance.

Bit no.	Filter	Description
0	0x0001	Set this Bit to '1' to enable the repeater mode.
1 - 15	0xFFFF	Reserved for future use. All reserved Bits '0'.

8.2.13.1 Example 1

Enable the repeater mode by setting the RpFlags parameter value to 0x0001 using the CMD_SET_REQ. The 2 byte parameter is to be used LSB first.

Start signal	Command	Length	Settings index	Parameter	CS
0x02	0x09	0x03	0x10	0x01 0x00	0x19

Response CMD_SET_CNF: Successfully modified the setting.

Start signal	Command 0x40	Length	Status	CS
0x02	0x49	0x01	0x00	0x4A

8.2.13.2 Example 2

Request the repeater flags using CMD_GET_REQ:

Start signal	Command	Length	Settings index	CS
0x02	0x0A	0x01	0x10	0x19

Response CMD_GET_CNF: Successfully read out the value of RpFlags. The 2 byte parameter is to be used LSB first. A parameter value 0x0000 indicates that the repeater mode is disabled. A value of 0x0001 indicates that the repeater mode is enabled.

Start signal	Command 0x40	Length	Status	Parameter	CS
0x02	0x4A	0x03	0x00	0x00 0x00	0x4B

8.2.14 RP_NumSlots: Configure the repeater data base

Settings index	Designation	Permissible values	Default value	Permissions	Number of Bytes
17	RP_NumSlots	1 -255	32	read/write	1

An 8 Bit field that contains the number of time slots to be used for the packet repetition.

When using several repeater devices in a single network, repeated data packets may collide on the frequency channel, when all repeater devices send the received packet at the same time. To avoid this, the frequency channel is divided in RP_NumSlots time slots, where each repeater chooses a certain slot by random.

The smallest number of time slots that is needed, depends on the network structure and the number of the repeaters used. Assume there are NumRP repeater devices in the range of a sending device, then the probability of two repeated packets collide can be calculated by:

$$1 - \frac{RP_NumSlots!}{RP_NumSlots^{NumRP} \times (RP_NumSlots - NumRP)!} \quad (2)$$

Common values are:

NumRP	RP_NumSlots	Collision probability
2	32	3.1%
3	32	9.2%
4	32	17.7%
5	64	14.8%
6	64	21.5%
7	128	15.4%

In the example network shown in figure 7, there are only two repeaters that can conflict each other. Repeater 2 and 3 are forwarding the packet received from Sender 1 "at the same time". Thus, NumRP equals 2 and RP_NumSlots equal 32 is sufficient to have a collision probability of less than 5%. The time delay used by the repeater device can be determined as the time needed to send one packet (see table 9) times a random number between one and RP_NumSlots.

Example:

In RADIO_DefaultRfProfile 0 the maximum send time for one packet is about 40ms. If we use 32 RP_NumSlots, the packet is forwarded latest after 32×40ms=1280ms.

8.2.14.1 Example 1

Set the RP_NumSlots to 64 (0x40) using the CMD_SET_REQ.

Start signal	Command	Length	Settings index	Parameter	CS
0x02	0x09	0x02	0x11	0x40	0x58

Response CMD_SET_CNF: Successfully modified the setting.

Start signal	Command 0x40	Length	Status	CS
0x02	0x49	0x01	0x00	0x4A

8.2.14.2 Example 2

Request the number of repeater slots using CMD_GET_REQ:

Start signal	Command	Length	Settings index	CS
0x02	0x0A	0x01	0x11	0x18

Response CMD_GET_CNF: Successfully read out the number of repeater slots as 32 (0x20).

Start signal	Command 0x40	Length	Status	Parameter	CS
0x02	0x4A	0x02	0x00	0x20	0x6A

8.2.15 FactorySettings: Read out the factory settings

Settings index	Designation	Permissible values	Default value	Permissions	Number of Bytes
32	FactorySettings	-	-	read	8

This parameter defines the factory settings of the module.

Byte no.	Description
3 : 0	Serial number: 3 byte ID (LSB first), 1 byte PID
6 : 4	Hardware version: Major , Minor, Patch
7	Frequency correction factor

8.2.15.1 Example 1

Request the factory settings of the module using CMD_GET_REQ:

Start signal	Command	Length	Settings index	CS
0x02	0x0A	0x01	0x20	0x29

Response CMD_GET_CNF: Successfully read out the FactorySettings.

Start signal	Command 0x40	Length	Status	Parameter	CS
0x02	0x4A	0x09	0x00	0x01 0x00 0x00 0x74 0x00 0x03 0x02 0x00	0x35

Successfully returned the following factory settings, the order of the multi byte parameters was changed to MSB first to be converted into decimal numbers later:

- Serial number: 0x74.000001 (116.000001) with PID 0x74 (116) and SN 0x000001 (1)
- Hardware version 0x02 0x03 0x00 (2.3.0)
- Frequency correction factor of 0x00 (0)



For being compatible to this manual a Hardware Version of 2.2.0 or newer is required. Full functionality as described in this manual requires a module in Hardware Version 2.3.0 or newer.

8.2.16 FirmwareVersion: Read out the firmware version

Settings index	Designation	Permissible values	Default value	Permissions	Number of Bytes
33	FirmwareVersion	-	-	read	3

This parameter defines the version of the firmware currently running on the module.

8.2.16.1 Example 1

Request the factory settings of the module using CMD_GET_REQ:

Start signal	Command	Length	Settings index	CS
0x02	0x0A	0x01	0x21	0x28

Response CMD_GET_CNF: Successfully read out the firmware version as 2.1.0. The sequence inside the field "Parameter" is Patch, Minor, Major.

Start signal	Command 0x40	Length	Status	Parameter	CS
0x02	0x4A	0x04	0x00	0x00 0x01 0x02	0x4F

9 Timing parameters

9.1 Reset behavior

Following a reset, a `CMD_RESET_IND` and a stable low level on the `/RTS` pin signalizes that the module is ready for operation. During restart the `/RTS` may be pulled to GND level for a short time ($<100\mu\text{s}$, see figure 5) until it is configured accordingly by the application on the module.

9.1.1 Reset via `/RESET` pin

To force a module restart by means of the `/RESET` pin, it must first be drawn to low for at least $100\mu\text{s}$. After the pin is released, the module will reboot, indicate a `CMD_RESET_IND`. Please note that the selected UART baud rate will introduce a latency for transmitting the 5-byte packet at module start-up.

Recommended procedure: After the `/RESET` pin is released, wait for up to $200\text{ms} + \text{UART transmission time for the } \text{CMD_RESET_IND} \text{ packet}$ (value is to be adopted for the selected UART baud rate) and for the stable low level on the `/RTS` pin.



This section applies only to a situation where the VCC is stable and the module was already running. Additional timings are needed when VCC was just applied to the module, see chapter 4.2

9.1.2 Reset as result of a serious error condition

If the module runs in a serious error condition, a software reset is executed. In this case, the module starts up (this includes sending a `CMD_RESET_IND`) automatically and can be used again. The volatile RuntimeSettings are reset to defaults. Therefore, the host needs to detect the start-up indication and implement reconfigure the module's volatile settings when this event was detected.

9.2 Latencies when leaving standby or shutdown

The indication `CMD_RESET_IND` or `CMD_STANDBY_IND` (5 Bytes in total) are written before the `/RTS` pin is pulled back to low level. Therefore, the start-up time is also dependent on the UART baud rate. The time presented here was measured with the UART default setting of 115200 baud, 8n1.

9.2.1 Wake-up latency from standby

The wake-up time from standby is 1.6 ms.

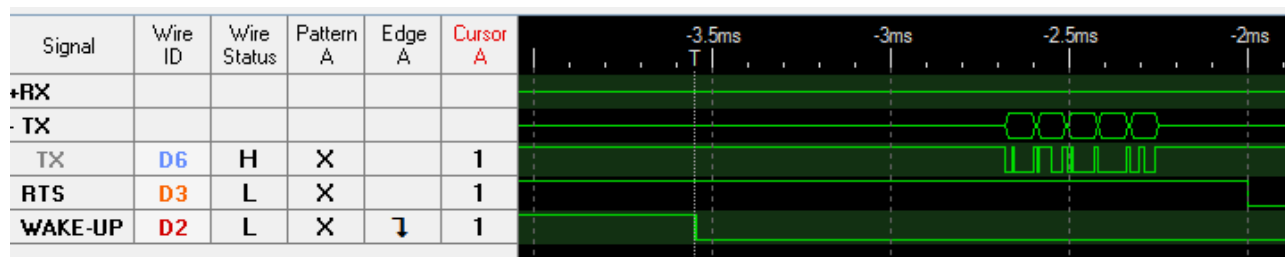


Figure 5: Wake-up from standby

9.2.2 Wake-up latency from shutdown

The wake-up time from shutdown is 5 ms.

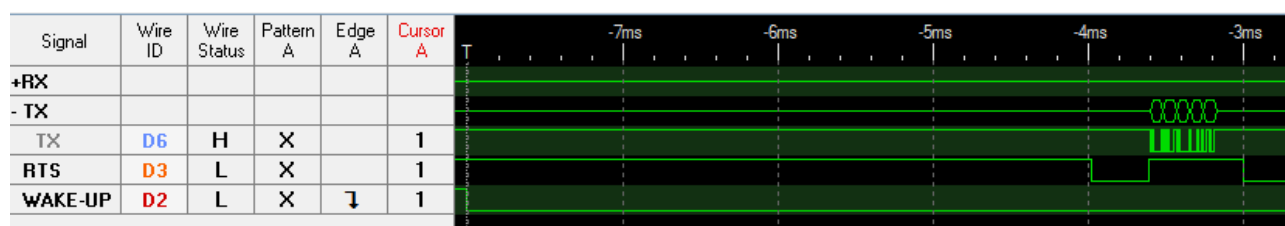


Figure 6: Wake-up from shutdown

9.3 Latencies during data transfer / packet generation

The data transfer is always buffered, i.e. data received via UART is buffered in the module until a specific event occurs (i.e. packet completed with the CS field of a command). Subsequently, the UART reception is interrupted (flow control with $/RTS$ signal), and the payload data is passed to the internal memory of the wireless transceiver (FIFO).

By using several UART buffers the time during which the UART is not receiving can be minimized.

The wireless transmission starts as soon as the first complete data packet is available in the transceiver memory. During the continuous wireless transmission, the remaining payload data is transmitted byte by byte on the radio. On the receiver side, the buffer is read as soon as an incoming packet is detected. The entire radio frame is buffered in the radio buffer and processed once the frame was checked against bit errors.

If the module detects a packet that requires an ACK, the ACK is sent directly after the full packet reception. The channel access method is always deactivated for any ACKs.

10 Radio parameters

The default radio parameters are determined by the values of `RADIO_DefaultRfProfile`, `RADIO_DefaultRfChannel` and `RADIO_DefaultRfTXPower` in the user settings. These non-volatile parameters can be modified using `CMD_SET_REQ`. To modify their volatile counterparts the commands `CMD_SET_PAPOWER_REQ` and `CMD_SET_CHANNEL_REQ` can be used.



The parameter must be chosen with prudence to reach good functionality and compliance with valid regulatory requirements such as the EN 300 220 in the European Union or the FCC in the United States of America. The user of this module is solely responsible for adhering to all applicable statutory regulations.



The module is tested through an accredited test lab to conform to the requirements of the RED. The module complies to receiver category 2.

This means, that mounted on its EV-board it complies to the requirements of the RED. However, conformance of the end-device depends also but not limited to the radiated power of the end-device. Which strongly depends on the selected antenna, the pcb design, the wiring to the antenna and the quality of the power supply. Thus, it is highly recommended that the end-device manufacturer verifies the radiated power characteristic on the end application. An important aspect to comply with the radio regulatory is to adhere to the requirements of the duty cycle. As defined in EN 300 220, the duty cycle is the ratio expressed as a percentage of the cumulative duration of transmission T_{on} within an observation time interval of T_{obs} . $DC = (\frac{T_{on}}{T_{obs}})_{F_{obs}}$ on an observation bandwidth F_{obs} . Unless otherwise specified, T_{obs} is 1 hour and the observation bandwidth F_{obs} is the operational frequency band.



There are no mechanisms for constraining the duty cycle in the firmware. The user is fully responsible for the compliance of the duty cycle and implementing according mechanisms in the end-device.

The frequency channels of the module can be selected from a 50 kHz grid. Not all channels are permissible, depending on the selected profile, output power and antenna (radio profile, radio TX power and radio channel).



Depending on the chosen radio profile the channel spacing declared in table 10, chapter 10.1 has to be applied.

10.1 Channel assignment

Sub Band		Channel	Frequend MHz	Profile 3	Profile 0,4	Profile 2	Profile 5
		Required channel spacing		50 kHz	100 kHz	200 kHz	600 kHz
<div>Band M</div> <div>868 MHz - 868.6 MHz</div> <div>≤ 14 dBm</div> <div>The whole band except for audio& video applications limited to 300 kHz</div> <div>duty cycle ≤ 1% or PSA</div>		100	868.00	Band limit			
		101	868.05	M	M	-	-
		102	868.10	M	*	M	-
		103	868.15	M	M	*	-
		104	868.20	M	*	*	-
		105	868.25	M	M	*	-
		106	868.30	M	*	M	M
		107	868.35	M	M	*	-
		108	868.40	M	*	*	-
		109	868.45	M	M	*	-
		110	868.50	M	*	M	-
		111	868.55	M	M	-	-
		112	868.60	Band limit			
		113	868.65	Out of band			
<div>Band N</div> <div>868.7 MHz - 869.2 MHz</div> <div>≤ 14 dBm</div> <div>The whole band except for audio & video applications limited to 300 kHz</div> <div>duty cycle ≤ 0.1% or PSA</div>		114	868.70	Band limit			
		115	868.75	N	N	-	-
		116	868.80	N	*	*	-
		117	868.85	N	N	N	-
		118	868.90	N	*	*	-
		119	868.95	N	N	*	-
		120	869.00	N	*	*	-
		121	869.05	N	N	N	-
		122	869.10	N	*	*	-
		123	869.15	N	N	-	-
		124	869.20	Band limit			
		125	869.25	Out of band			
		126	869.30				
		127	869.35				
<div>Band O</div> <div>869.4 MHz - 869.65 MHz</div> <div>≤ 14 dBm</div> <div>duty cycle ≤ 0.1% or PSA</div>	<div>Band P</div> <div>869.65 MHz - 869.7 MHz</div> <div>≤ 27 dBm</div> <div>duty cycle ≤ 10% or PSA</div>	128	869.40	Band limit			
		129	869.45	P	P	-	-
		130	869.50	P	*	P	-
		131	869.55	P	P	*	-
		132	869.60	P	*	-	-
		133	869.65	Band limit			
<div>Band Q</div> <div>869.7 MHz - 870 MHz</div> <div>≤ 7 dBm</div> <div>No duty cycle</div>	<div>Band R</div> <div>870 MHz - 870.5 MHz</div> <div>≤ 14 dBm</div> <div>duty cycle ≤ 1% or PSA</div>	134	869.70	Band limit			
		135	869.75	Q/R	Q/R	-	-
		136	869.80	Q/R	*	Q/R	-
		137	869.85	Q/R	Q/R	*	-
		138	869.90	Q/R	*	*	-
		139	869.95	Q/R	Q/R	-	-
		140	870.00	Band limit			

Table 10: Channel assignment

M, N, P, Q, R means that the channel is allowed corresponding to the appropriate EN 300 220 operational frequency band requirements.

- means, that the channel is not allowed.

* means, that the channel in general is allowed, but the above mentioned channel spacing must be fulfilled. In general allowed means, that the occupied channel fits into the appropriate frequency band and meets the requirement of out of band emissions and unwanted emissions in the spurious domain.

The EN 300 220 allows a specific tx duration when the standard complying PSA method is implemented in the module firmware. The standard Tarvos-III firmware does not implement PSA.

11 Battery powered operation

For battery-powered operation, the module provides two sleep modes. Each mode can be entered by a specific command and left by applying a falling edge at the *WAKE-UP* pin.

	Shutdown	Standby
Enter mode	By command CMD_SHUTDOWN_REQ	By command CMD_STANDBY_REQ
Typical current consumption [μ A]	0.2	1.6
Wake-up trigger	Falling edge at the <i>WAKE-UP</i> pin	
CPU wake-up time [ms]	See chapter 9	
Wake-up behavior	The module restarts such that all volatile settings are lost.	RAM is retained and module just continues its operation.
Wake-up message	CMD_RESET_IND	CMD_STANDBY_IND

12 Custom firmware

12.1 Custom configuration of standard firmware

The configuration of standard firmware includes adoption of the non-volatile User settings (see chapter 8) to customer requirements and creating a customized product on base of the standard product with a unique ordering number for a specific customer that needs this configuration.

For example if the UART baud rate shall be changed from the default value to another value. This variant will result in a customer exclusive module with a unique ordering number. This will also fix the firmware version to a specific and customer tested version and thus results in a customer exclusive module with a unique ordering number.

Further scheduled firmware updates of the standard firmware will not be applied to this variant automatically. Applying updates or further functions require a customer request and customer release procedure.

12.2 Customer specific firmware

A customer specific firmware may include "Custom configuration of standard firmware" plus additional options or functions and tasks that are customer specific and not part of the standard firmware.

Further scheduled firmware updates of the standard firmware will not be applied to this variant automatically. Applying updates or further functions require a customer request and customer release procedure.

This also results in a customer exclusive module with a unique ordering number.

An example for this level of customization are functions like host-less operation where the module will perform data generation (e.g. by reading a SPI or I²C sensor) and cyclic transmission of this data to a data collector while sleeping or being passive most of the time.

Also replacing UART with SPI as host communication interface is classified such a custom specific option.

Certification critical changes need to be re-evaluated by an external qualified measurement laboratory. These critical changes may occur when e.g. changing radio parameters, the channel access method, the duty-cycle or in case of various other functions and options possibly used or changed by a customer specific firmware.

12.3 Customer firmware

A customer firmware is a firmware written and tested by the customer himself or a 3rd party as a customer representative specifically for the hardware platform provided by a module.

This customer firmware (e.g. in form of a Intel hex file) will be implemented into the module's production process at our production side.

This also results in a customer exclusive module with a unique ordering number.

The additional information needed for this type of customer firmware, such as hardware specific details and details towards the development of such firmware are not available for the public and can only be made available to qualified customers.



The qualification(s) and certification(s) of the standard firmware cannot be applied to this customer firmware solution without a review and verification.

12.4 Contact for firmware requests

Please contact your local field sales engineer (FSE) or wireless-sales@we-online.com for quotes regarding this topics.

13 Flooding mesh: Using the repeater functionality

The module can be run as a repeater to artificially extend the range of sending devices in an existing network. If the module is configured as repeater, it can be simply added to existing

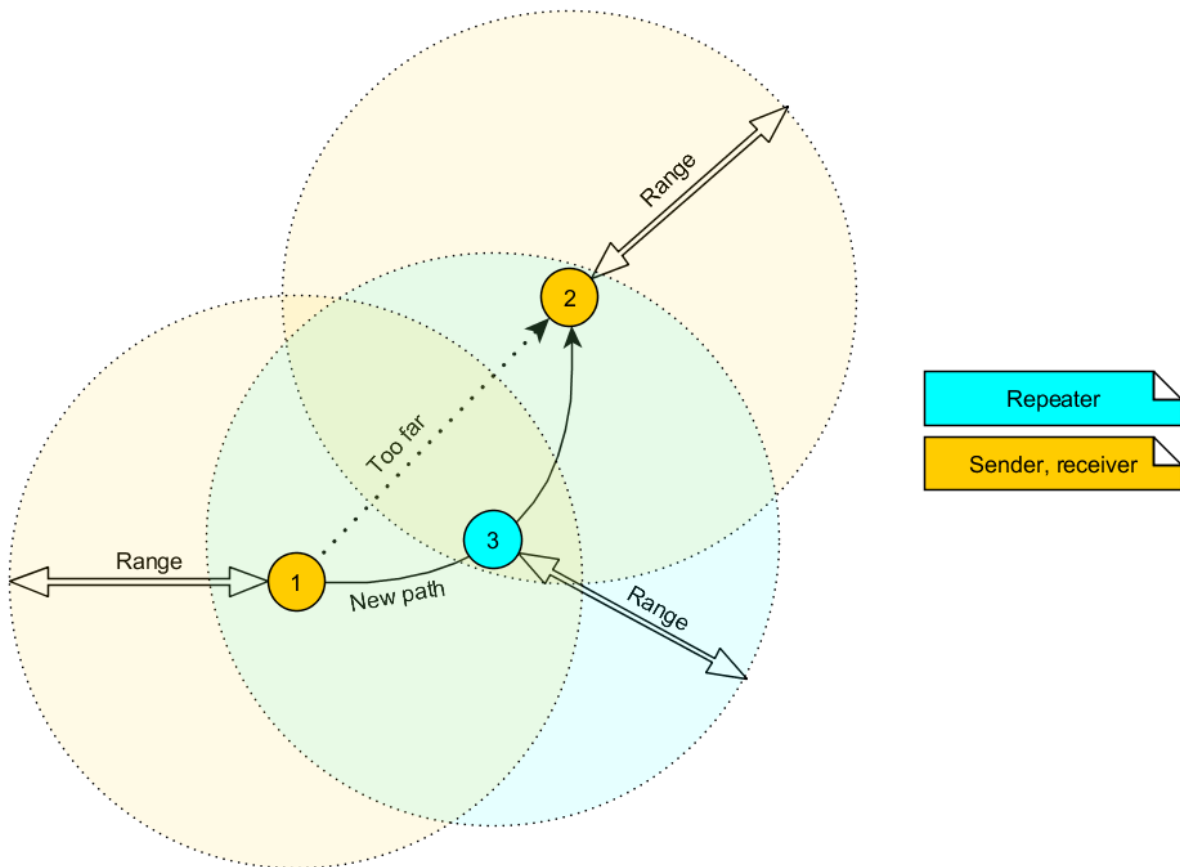


Figure 7: Range extension using several repeaters

wireless networks consisting of compatible modules. With this, the newly generated mesh network uses the so-called "flooding technique" to deliver data packets from their source to their destination device.

The repeater module itself simply listens to the configured channel and forwards all received packets except the ones addressed to itself. Thereby a random delay is used to avoid RF packet collision. To reduce traffic on the frequency channel, each repeater device checks before repetition, if the channel is free and whether it has already sent this packet before or not. Thus, every repeater sends each packet only once.

In a network with **NumRP** repeater devices, each data packet is repeated **NumRP** times. Therefore each packet that is send from node A to node B forces a traffic of **NumRP+1** data packets in total on the frequency channel.

Besides of this, an module that is configured as repeater supports also the functions of a standard module. Thus, it can receive data and can initiate the data transmission to other modules.

13.1 Setup of the network and repeater device

The repeater mode can be enabled with setting Bit 0 accordingly in the `RpFlags`.



As ACKs are not supported by the repeater mode all network members must make sure that the `UserSettings` value of `MAC_NumRetrys` is set to 0.

If the module is configured as repeater, the following notes have to be considered:

1. Requirements on the network:

- a) The repeater devices have to be line-powered (no battery), since due to packet repetition it demands more energy.
- b) Depending on the data rate, each repeater should repeat a maximum of 2-5 packets per second to give a good chance that the repeater is not busy with repeating when already a new packet arrives for repetition. Otherwise, packets can get lost. Please setup your network such that this requirement is fulfilled. More packets per second will result in more packet loss as the collision probability is increased.
- c) If the network consists of several layers of repeaters, each layer delays the packet transmission additionally.
- d) To setup the network all participants have to use the same `RADIO_DefaultRfProfile`, `RADIO_DefaultRfChannel` and `MAC_DefaultAddressMode`.
- e) The network must be designed by the user in a way the duty-cycle requirements of the local regulatory requirements cannot be exceeded.

2. Information for the repeater device:

- a) Acknowledgements (ACK) of successfully received packets are blocked. If an ACK is requested by the sending module, the request is ignored. Furthermore, the repeater does not request any ACK, when repeating a packet.
- b) The "packet sniffer" mode cannot run at the same time as the module is in repeater mode.
- c) Each time a packet has been repeated a `CMD_REPEAT_IND` is output over UART. Depending on the address mode, the address of the involved devices is placed in the `CMD_REPEAT_IND` telegram. With this the original sender of the RF packet and the device, that is supposed to receive the packet, can be identified.

3. Information for the sending and receiving devices:

- a) The senders should send less frequently to avoid packet collision on the frequency channel and to not exceed the duty cycle requirements.
- b) The repeater devices do not support the feature of ACKs for the successful reception of the packets. Thus, the sender will never receive ACKs if requested. To ensure that transmitted packets are successfully received by the destination device, the network administrator has to integrate his own acknowledging feature in the customer's application. To be sure that the sender does not request ACKs the `UserSetting MAC_NumRetrys` must be set to 0.

- c) Every repeater sends each packet only once. However, receivers can receive each packet several times (sent by different repeaters), if there are packets of different content in the network temporally close to each other. Thus, on the side of the receiving device, a mechanism shall be implemented that detects and filters double packets.

13.2 Example network

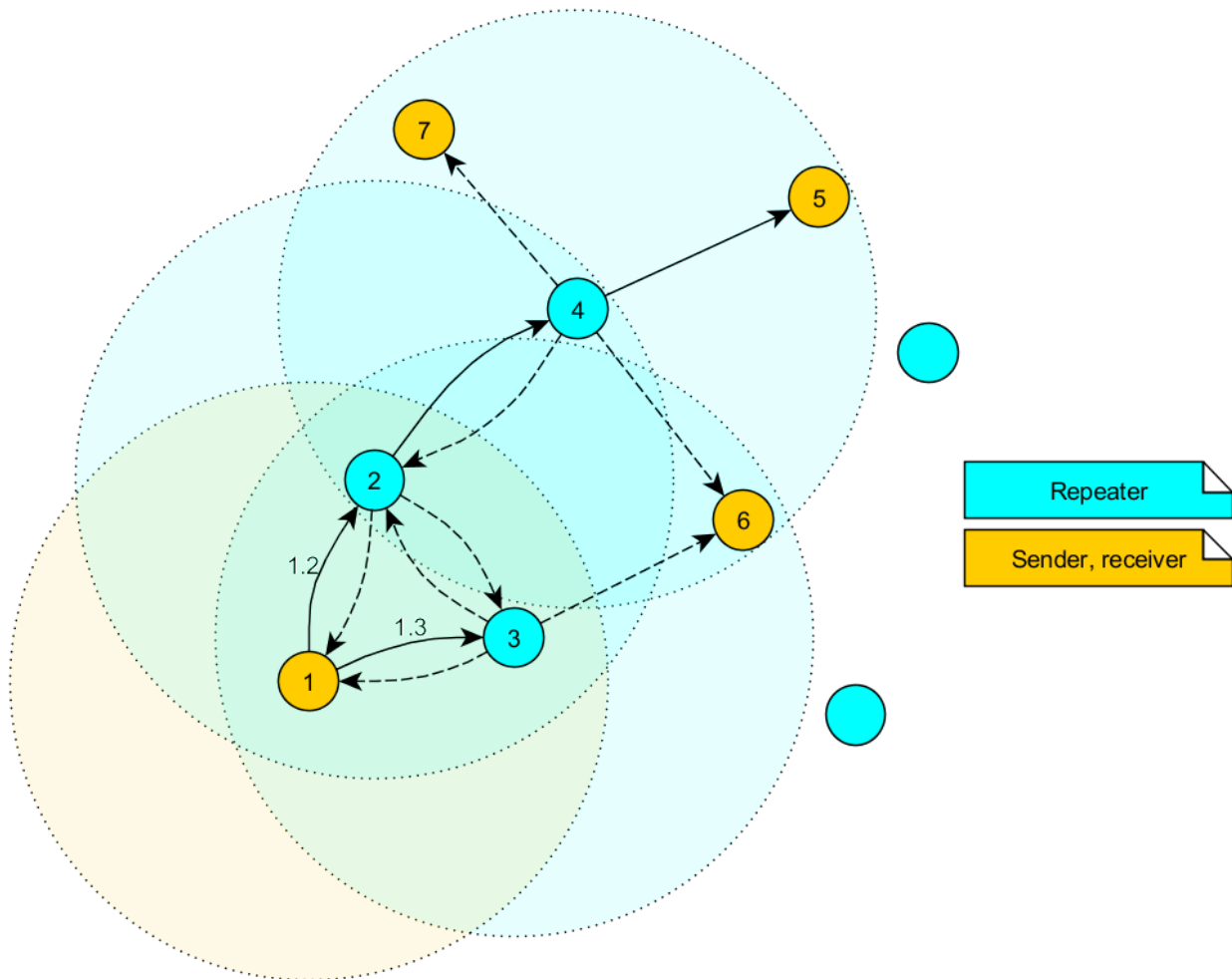


Figure 8: Example network

In the example network shown above, the goal is to send a packet from device 1 to 5. Without the repeater devices, this would be impossible. The steps are as follows:

1. Sender 1 sends a packet.
 - a) Repeater 2 and 3 receive and accept it at the same time.
2. Device 2 and 3 delay the packet.
 - a) Repeater 3 sends the packet.
 - i. Sender 1 and 6 do not accept it, since their addresses are wrong (unequal 5).

- ii. Repeater 2 does not accept it, since it has been already received before (1.2).
- b) Repeater 2 sends the packet.
 - i. Repeaters 3 does not accept it, since it has been already received before (1.3).
 - ii. Sender 1 does not accept it, since its address is wrong (unequal 5).
 - iii. Repeater 4 receives and accepts the packet.
- 3. Repeater 4 delays and sends the packet.
 - a) Sender 6 and 7 do not accept it, since their addresses are wrong (unequal 5).
 - b) Repeater 2 does not accept it, since it has been already received before (1.2).
 - c) Receiver 5 accepts it and its successfully delivered (address equals 5).

Note that the packet forwarded by repeater 2 and 3 would collide in the frequency channel, if they wouldn't be randomly delayed (see `RP_NumSlots`).

13.2.1 Application in parallel networks

As described above, a repeater device forwards all packets that are received before. If a network needs to have a bigger throughput of data, a parallel network can be set up, that relaxes the stress of the primal network. To do so, all sending, receiving and repeater devices of the parallel network are configured to use a new non-overlapping channel, such that the primal network is not affected at all by the traffic of the parallel network. All nodes in the networks shall not be closer to each other than 2 meters, if that cannot be avoided the tx power parameter of devices close to each other must be reduced.

14 Using the long range mode

The module provides several so called LRM ("long range modes") that allows to achieve ranges up to 10km with matching antenna above ground levels at the cost of net data rate, throughput and packet duration. To enable any long range mode, the parameter `RADIO_DefaultRfProfile` must be set to the corresponding long range profile.

To do so the `CMD_SET_REQ` can be used as it is in case of any other parameter. In this particular case, it looks as follows:

Start signal	Command	Length	Settings index	Parameter	CS
0x02	0x09	0x02	0x01	0x03	0x0B

Response `CMD_SET_CNF`: Successfully modified the setting.

Start signal	Command 0x40	Length	Status	CS
0x02	0x49	0x01	0x00	0x4A

15 Compatibility to existing proprietary modules

Under certain conditions and settings, the Tarvos-III is radio and/or command compatible to Tarvos-II and Tarvos-I and their related USB dongles. To allow interoperability check the following settings:

General: Tarvos-II firmware must be of version 3.5.0 or later, Tarvos-I firmware must be 2.1.0 or later

RF profiles / RF settings: RF-profile 0 (38.4 kBaud) and RF-profile 2 (100 kBaud) are compatible to existing modules. The remaining profiles are for Tarvos-III usage only.

Address mode: Tarvos-I supports address mode 0 and 1. The Tarvos-II additionally supports address mode 2.

Addresses: `MAC_DefaultDestAddr` and `MAC_DefaultDestNetID` are set to the corresponding broadcast addresses (255 and/or 65535), so a `CMD_DATA_REQ` after a reset in any `MAC_DefaultAddressMode` will result in a Broadcast frame. The "old" modules have selected 0 as default destination address and NetID.

User data size: Tarvos-I supports up to 120 Bytes user data. Tarvos-II supports up to 128 Bytes payload.

Timings: Some timings of existing modules (ACK timeouts with retries) may need adjustment (i.e. increased timeouts).

Pinout: The pinout for basic functionality is kept the same as Tarvos-I and Tarvos-II. Thus, `UART_RX`, `UART_TX` and `RTS`, `/RESET`, `GND`, `VCC` and `LED`'s remain on the same pads. Nevertheless, the Tarvos-III requires further pins to operate: those pins are `BOOT` and `WAKE-UP`. Also the electrical characteristics over all hardwareplatforms are not identical.

Operation mode: The Tarvos-III only supports command mode using the same command structure as known from previous products but with slightly changed commands (e.g. `CMD_SET_REQ` and `CMD_GET_REQ` structures were changed for better usability). The transparent mode is not available on Tarvos-III.

UART: The Tarvos-III uses 115200 baud 8n1 instead of 9600 baud 8n1 as factory default for the UART. Users can change this setting to 9600 Baud using the `CMD_SET_REQ` command.

Low power mode: Tarvos-III will enable low power modes on UART commands `CMD_STANDBY_REQ` and `CMD_SHUTDOWN_REQ`. In low power mode, the UART is disabled and a `WAKE-UP` can be triggered by using the `WAKE-UP` pin accordingly.

15.1 Restrictions

Tarvos-II: To successfully transmit ACKs from an Tarvos-III to Tarvos-II the parameter `MAC_AckTimeout` of the Tarvos-II must be set to a value of at least 20ms. Furthermore, the firmware of the Tarvos-II must be of version 3.5.0 or newer.

Tarvos-I, Tarvos: To successfully transmit ACKs from Tarvos-III to Tarvos-I the parameter `MAC_AckTimeout` of the Tarvos-I must be set to a value of at least 20ms. Furthermore, the firmware of the Tarvos-I must be of version 2.1.0 or newer.

16 Firmware update



We highly recommend having the UART or JTAG accessible in any application to have the possibility to perform a firmware update. Firmware updates can only be performed through this interfaces once a module is implemented into a customer PCB.



Flashing a customer or non standard firmware makes all regulatory and conformity information and certificates of chapter 24 invalid.

16.1 Update using the UART interface

Only the *UTDX*, *URXD* and *GND* signals are needed for this connection. A suiting adapter/-converter is required for a PC connection (e.g. the FTDI TTL-323R-3V3 UART to USB converter).



None of the module pins is 5V TTL compatible. Applying overvoltage to any pin may damage the hardware permanently. Make sure your levels are in the range of the electrical specification shown in chapter 2

16.1.1 ACC Software

As long as our standard firmware is running on the module, it can be updated with the PC utility "AMBER Config Center" (ACC) via the serial interface. Therefore the module must be reset while holding the *BOOT* pin on a high level until the bootloader is active.

If the module is not directly connected to a PC, at least the UART should be made accessible, e.g. by means of suitable connectors.

The pin *BOOT* must be connected to a high level (while and short after a reset) in order to start the bootloader. If the *BOOT* pin is connected to GND the application will start, so for normal operation the level on the *BOOT* pin must be pulled to GND (e.g. using a pull-down with up to 1k Ω) to make sure the application is started. The reset signal shall be connectable to GND for performing a reset of the module (e.g. using a push-button which pulls to *GND* when pressed). The */RESET* pin has an internal pull-up of 100 k Ω .

16.1.2 Generic UART solution

This information is not available for public and requires a NDA and Licensing procedure for qualified customers. Additional information is available upon request from wireless-sales@we-online.com.

16.2 Update using JTAG

Using this interface option allows performing a fail-safe firmware update even in case of a broken firmware or misconfiguration. The user needs hardware and software tools to be able to perform this procedure. In detail those are:

- Flash adapter for Cortex M μ C supporting TI CC1310 (Not every adapter supports the used connection methods). Recommended adapters are: "Segger J-Flash" and "TI XDS110v3"
- Flasher software according to the used flasher adapter
- */RESET*, *GND* and *VCC* are needed for the JTAG connection
- JTAG connection is supported through the module's pads *i1* to *i4*

Our binary firmware files are not publicly available and require a NDA and licensing procedure for qualified customers. Additional information is available upon request from wireless-sales@we-online.com.



Using this method may require a full chip-erase to be able to write a new firmware into the module.



Never erase the entire chip. Some memory segments (such as CCFG and FactorySettings) must be retained if original firmware shall be flashed onto the μ C again. Missing, illegal or erased parameters/flash segments may lead to module malfunctions when original firmware is used.

17 Firmware history

Version 1.x.x "Engineering"

- For Tarvos-III HW-Version \leq 2.1 "Engineering" only

Version 2.0.0 Beta "Engineering"

- For Tarvos-III HW-Version = 2.2 "Engineering" only
- Known issues:
 - This is not the final release! Major changes will occur until release.
 - FactorySettings and UserSettings location is not on the final Address, yet
 - An update from firmware version 1.0.0 to version 2.0.0 Beta is not possible due to the HW differences

Version 2.0.x "Engineering"

- For IC types CC1310 Revision B only (i.e. hardware version 2.2 or newer)
- This is not the final release! Changes will occur until release.
- For Tarvos-III HW-Version = 2.2 "Engineering" and 2.3 "Release"
- Status "Beta/Engineering" firmware
- New additional radio profiles for Tarvos-III (profiles 4, 5)
- Added temperature dependant frequency compensation for radio profile 3 (LRM) to support the whole temperature range with this radio profile. All other profiles do not need this compensation because the radio cristal is already accurate enough.
- Sniffer mode can be enabled using the CfgFlags
 - Removed UserSetting RADIO_SnifferModeEnabled
- Known issues:
 - TI-RTOS: Additional latencies up to 5ms due to task priorities may occur
 - An update from firmware version 1.0.0 to version 2.0.0 is not possible due to the HW differences
 - Works with reservations on Tarvos-III HW-Version 2.2. You are advised to not use profile 3 with Tarvos-III HW-Version 2.2 and firmware 2.0.x as the temperature compensation is selected specifically for the crystal of HW-Version 2.3

Version 2.1.0 "Release"

- Optimized for Tarvos-III HW-Version 2.3
- Not used pins are pulled to low level (i.e. configured to output low).
- Known issues:
 - TI-RTOS: Additional latencies up to 5ms due to task priorities may occur
 - An update from firmware version 1.0.0 to version 2.x.x is not possible due to the HW differences
 - Works with reservations on Tarvos-III HW-Version 2.2. You are advised to not use radio profile 3 with Tarvos-III HW-Version 2.2 and firmware 2.1.0 as the temperature compensation is selected for HW-Version 2.3

18 Design in guide

18.1 Advice for schematic and layout

For users with less RF experience it is advisable to closely copy the relating evaluation board with respect to schematic and layout, as it is a proven design. The layout should be conducted with particular care, because even small deficiencies could affect the radio performance and its range or even the conformity.

The following general advice should be taken into consideration:

- A clean, stable power supply is strongly recommended. Interference, especially oscillation can severely restrain range and conformity.
- Variations in voltage level should be avoided.
- LDOs, properly designed in, usually deliver a proper regulated voltage.
- Blocking capacitors and a ferrite bead in the power supply line can be included to filter and smoothen the supply voltage when necessary.



No fixed values can be recommended, as these depend on the circumstances of the application (main power source, interferences etc.).



Frequently switching the module on and off, especially with a slowly changing voltage level of the power supply, can lead to erratic behavior, in rare cases even as far as damaging the module or the firmware. The use of an external reset IC can solve this matter and shall be considered especially in battery operated scenarios.

- Elements for ESD protection should be placed on all pins that are accessible from the outside and should be placed close to the accessible area. For example, the RF-pin is accessible when using an external antenna and should be protected.
- ESD protection for the antenna connection must be chosen such as to have a minimum effect on the RF signal. For example, a protection diode with low capacitance such as the LXES15AAA1-100 or a 68 nH air-core coil connecting the RF-line to ground give good results.
- Placeholders for optional antenna matching or additional filtering are recommended.
- The antenna path should be kept as short as possible.



Again, no fixed values can be recommended, as they depend on the influencing circumstances of the application (antenna, interferences etc.).

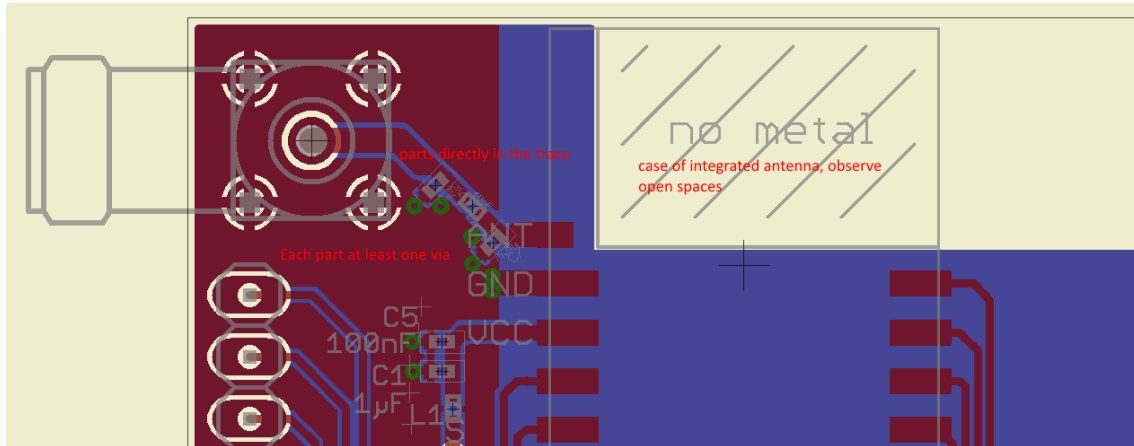


Figure 9: Layout

- To avoid the risk of short circuits and interference there should be no routing underneath the module on the top layer of the baseboard.
- On the second layer, a ground plane is recommended, to provide good grounding and shielding to any following layers and application environment.
- In case of integrated antennas it is required to have areas free from ground. This area should be copied from the evaluation board.
- The area with the integrated antenna must overlap with the carrier board and should not protrude, as it is matched to sitting directly on top of a PCB.
- Modules with integrated antennas should be placed with the antenna at the edge of the main board. It should not be placed in the middle of the main board or far away from the edge. This is to avoid tracks beside the antenna.
- Filter and blocking capacitors should be placed directly in the tracks without stubs, to achieve the best effect.
- Antenna matching elements should be placed close to the antenna / connector, blocking capacitors close to the module.
- Ground connections for the module and the capacitors should be kept as short as possible and with at least one separate through hole connection to the ground layer.
- ESD protection elements should be placed as close as possible to the exposed areas.

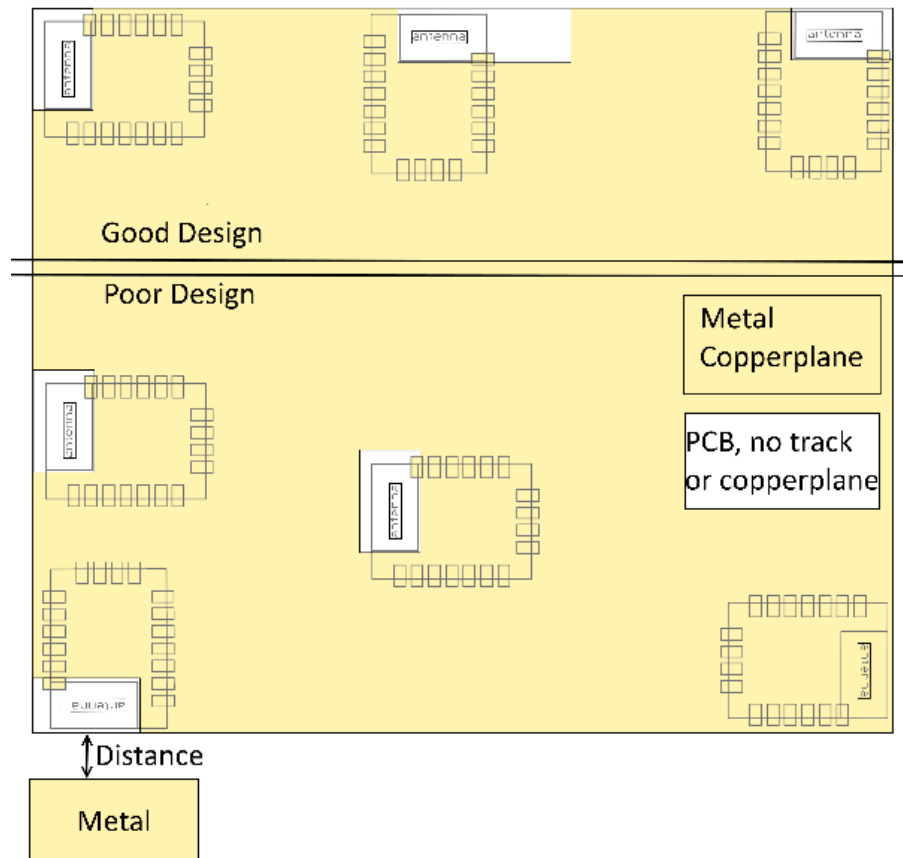


Figure 10: Placement of the module with integrated antenna

18.2 Dimensioning of the micro strip antenna line

The antenna track has to be designed as a 50Ω feed line. The width W for a micro strip can

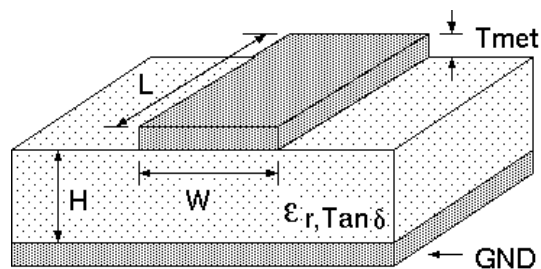


Figure 11: Dimensioning the antenna feed line as micro strip

be calculated using the following equation:

$$W = 1.25 \times \left(\frac{5.98 \times H}{e^{\frac{50 \times \sqrt{\epsilon_r + 1.41}}{87}}} - T_{met} \right) \quad (3)$$

Example:

A FR4 material with $\epsilon_r = 4.3$, a height $H = 1000 \mu\text{m}$ and a copper thickness of $T_{met} = 18 \mu\text{m}$

will lead to a trace width of $W \sim 1.9$ mm. To ease the calculation of the micro strip line (or e.g. a coplanar) many calculators can be found in the internet.

- As rule of thumb a distance of about $3 \times W$ should be observed between the micro strip and other traces / ground.
- The micro strip refers to ground, therefore there has to be the ground plane underneath the trace.
- Keep the feeding line as short as possible.

18.3 Antenna solutions

There exist several kinds of antennas, which are optimized for different needs. Chip antennas are optimized for minimal size requirements but at the expense of range, PCB antennas are optimized for minimal costs, and are generally a compromise between size and range. Both usually fit inside a housing.

Range optimization in general is at the expense of space. Antennas that are bigger in size, so that they would probably not fit in a small housing, are usually equipped with a RF connector. A benefit of this connector may be to use it to lead the RF signal through a metal plate (e.g. metal housing, cabinet).

As a rule of thumb a minimum distance of $\lambda/10$ (which is 3.5 cm @ 868 MHz and 1.2 cm @ 2.44 GHz) from the antenna to any other metal should be kept. Metal placed further away will not directly influence the behavior of the antenna, but will anyway produce shadowing.



Keep the antenna away from large metal objects as far as possible to avoid electromagnetic field blocking.



The choice of antenna might have influence on the safety requirements.

In the following chapters, some special types of antenna are described.

18.3.1 Wire antenna

An effective antenna is a $\lambda/4$ radiator with a suiting ground plane. The simplest realization is a piece of wire. It's length is depending on the used radio frequency, so for example 8.6 cm 868.0 MHz and 3.1 cm for 2.440 GHz as frequency. This radiator needs a ground plane at its feeding point. Ideally, it is placed vertically in the middle of the ground plane. As this is often not possible because of space requirements, a suitable compromise is to bend the wire away from the PCB respective to the ground plane. The $\lambda/4$ radiator has approximately 40 Ω input impedance, therefore matching is not required.

18.3.2 Chip antenna

There are many chip antennas from various manufacturers. The benefit of a chip antenna is obviously the minimal space required and reasonable costs. However, this is often at the expense of range. For the chip antennas, reference designs should be followed as closely as possible, because only in this constellation can the stated performance be achieved.

18.3.3 PCB antenna

PCB antenna designs can be very different. The special attention can be on the miniaturization or on the performance. The benefits of the PCB antenna are their small / not existing (if PCB space is available) costs, however the evaluation of a PCB antenna holds more risk of failure than the use of a finished antenna. Most PCB antenna designs are a compromise of range and space between chip antennas and connector antennas.

18.3.4 Antennas provided by Würth Elektronik eiSos

18.3.4.1 2600130011 - Helike - 169 MHz dipole antenna



Figure 12: 169 MHz dipole-antenna

Specification	Value
Frequency range [MHz]	169
Impedance [Ω]	50
VSWR	≤ 2.1
Gain [dBi]	1
Dimensions (L x d) [mm]	320 x 15
Weight [g]	42
Connector	SMA plug
Operating Temp. [$^{\circ}\text{C}$]	-40 – +85



This antenna requires a ground plane which will influence the electrical parameters.

18.3.4.2 2600130041 - Herse - 434 MHz dipole antenna



Figure 13: 434 MHz dipole-antenna

Specification	Value
Frequency range [MHz]	433
Impedance [Ω]	50
VSWR	≤ 1.5
Polarization	Vertical
Radiation	Omni
Gain [dBi]	0
Antenna Cover	TPEE
Dimensions (L x d) [mm]	90 x 12
Weight [g]	9.6
Connector	SMA plug
Operating Temp. [$^{\circ}\text{C}$]	-40 – +80



This antenna requires a ground plane which will influence the electrical parameters.

18.3.4.3 2600130081 - Hyperion-I - 868 MHz dipole antenna

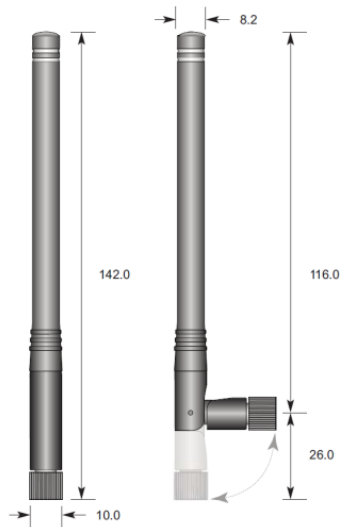


Figure 14: 868 MHz dipole-antenna

Ideally suited for applications where no ground plane is available.



The 2600130081 antenna can be also used for 902MHz - 928MHz range.

Specification	Value
Center frequency [MHz]	868
Frequency range [MHz]	853 – 883
Wavelength	0.5 wave
VSWR	≤ 2.0
Impedance [Ω]	50
Connector	SMA (Male)
Dimensions (L x d) [mm]	142 x 10
Peak gain [dBi]	-2.3
Operating temp. [$^{\circ}\text{C}$]	-30 – +80

18.3.4.4 2600130082 - Hyperion-II - 868 MHz magnetic base antenna

Well suited for applications where the RF is lead through a metal wall that could serve as ground plane to the antenna.

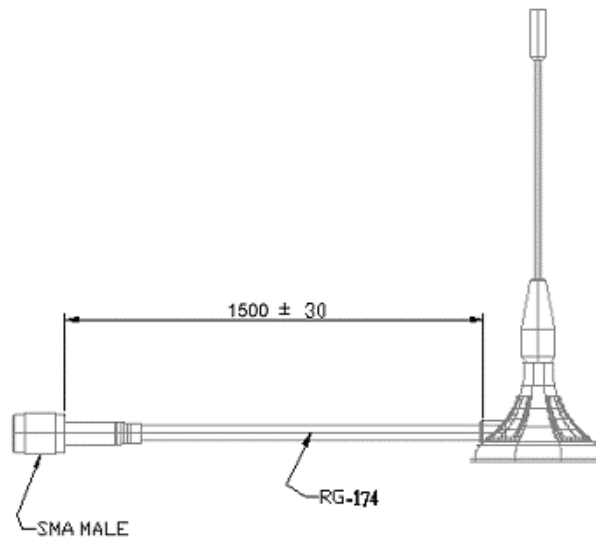


Figure 15: 868 MHz magnet foot antenna with 1.5 m antenna cable



The 2600130082 is a kind of $\lambda/4$ radiator and therefore needs a ground plane at the feeding point.

Specification	Value
Frequency range [MHz]	824 – 894
VSWR	≤ 2.0
Polarisation	Vertical
Impedance [Ω]	50 ± 5
Connector	SMA (Male)
Dimensions (L x d) [mm]	89.8 x 27
Weight [g]	50 ± 5
Operating temp. [$^{\circ}\text{C}$]	-30 – +60

18.3.4.5 2600130021 - Himalia - 2.4 GHz dipole antenna



Figure 16: 2.4 GHz dipole-antenna

Due to the fact, that the antenna has dipole topology there is no need for an additional ground plane. Nevertheless the specification was measured edge mounted and 90° bent on a 100 x 100 mm ground plane.

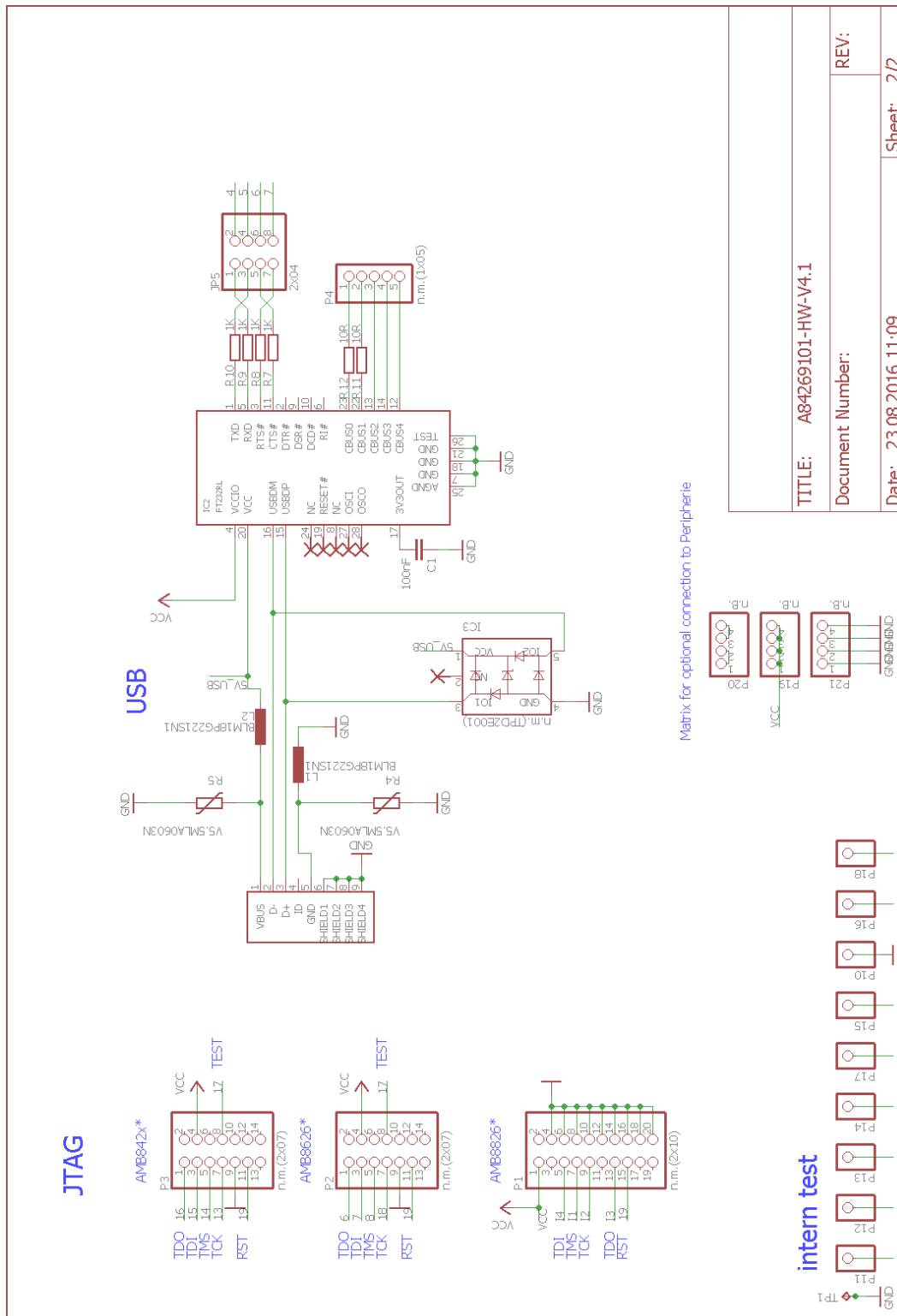
Specification	Value
Frequency range [GHz]	2.4 – 2.5
Impedance [Ω]	50
VSWR	$\leq 2:1$
Polarization	Linear
Radiation	Omni-Directional
Peak Gain [dBi]	2.8
Average Gain [dBi]	-0.6
Efficiency	85 %
Dimensions (L x d) [mm]	83.1 x 10
Weight [g]	7.4
Connector	SMA plug
Operating temp. [$^{\circ}\text{C}$]	-40 – +80

19 Reference design

Tarvos-III was tested and certified on the corresponding Tarvos-III evaluation board. For the compliance with the EU directive 2014/53/EU Annex I, the evaluation board serves as reference design.

This is no discrepancy due to the fact that the evaluation board itself does not fall within the scope of the EU directive 2014/53/EU Annex I as the module is tested on the evaluation board, which is also the recommended use.

Further information concerning the use of the evaluation board can be found in the manual of the Tarvos-III evaluation board.



19.2 Layout

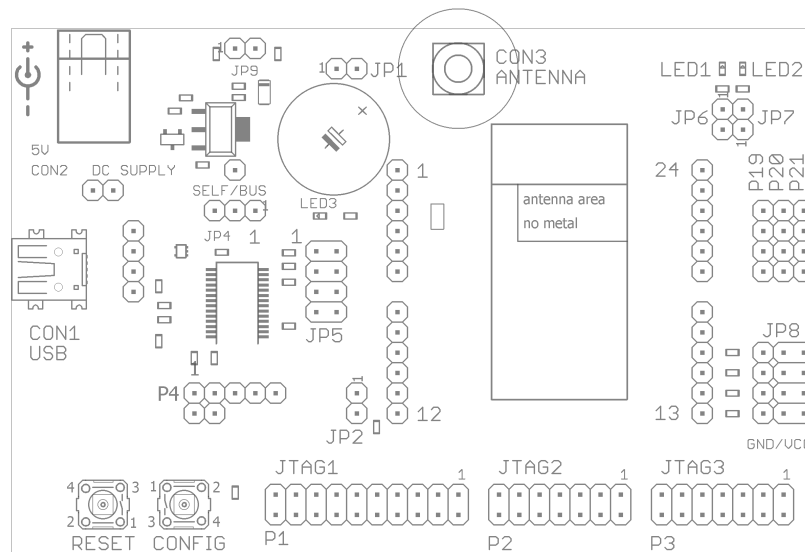


Figure 17: Assembly diagram

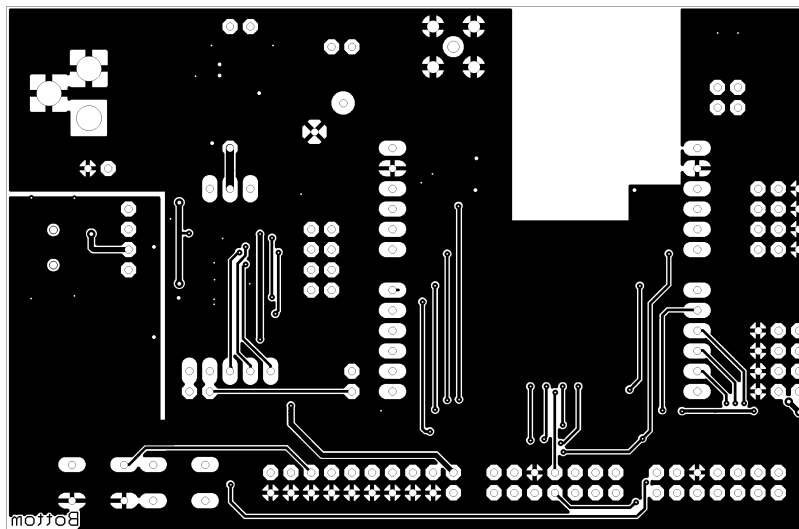
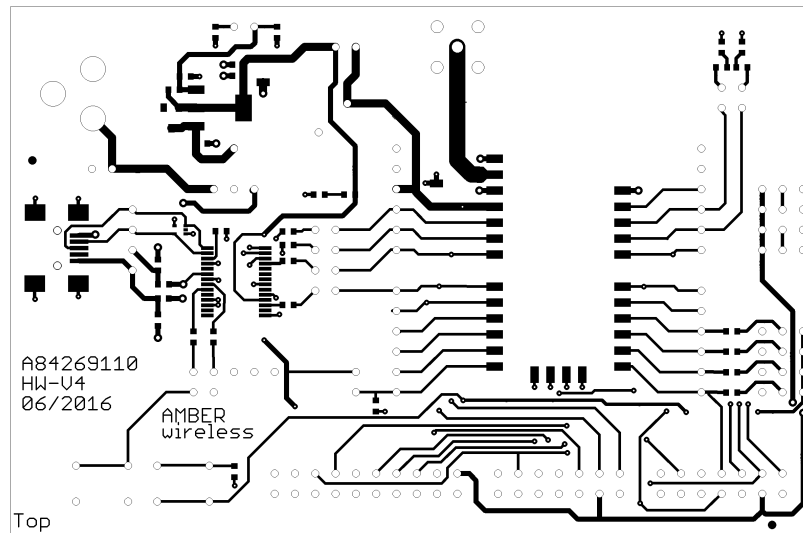


Figure 18: Top and Bottom Layer

20 Manufacturing information

20.1 Moisture sensitivity level

This wireless connectivity product is categorized as JEDEC Moisture Sensitivity Level 3 (MSL3), which requires special handling.

More information regarding the MSL requirements can be found in the IPC/JEDEC J-STD-020 standard on www.jedec.org.

More information about the handling, picking, shipping and the usage of moisture/reflow and/or process sensitive products can be found in the IPC/JEDEC J-STD-033 standard on www.jedec.org.

20.2 Soldering

20.2.1 Reflow soldering

Attention must be paid on the thickness of the solder resist between the host PCB top side and the modules bottom side. Only lead-free assembly is recommended according to JEDEC J-STD020.

Profile feature		Value
Preheat temperature Min	$T_{S\ Min}$	150 °C
Preheat temperature Max	$T_{S\ Max}$	200 °C
Preheat time from $T_{S\ Min}$ to $T_{S\ Max}$	t_S	60 - 120 seconds
Ramp-up rate (T_L to T_P)		3 °C / second max.
Liquidous temperature	T_L	217 °C
Time t_L maintained above T_L	t_L	60 - 150 seconds
Peak package body temperature	T_P	see table below
Time within 5 °C of actual peak temperature	t_P	20 - 30 seconds
Ramp-down Rate (T_P to T_L)		6 °C / second max.
Time 20 °C to T_P		8 minutes max.

Table 11: Classification reflow soldering profile, Note: refer to IPC/JEDEC J-STD-020E

Package thickness	Volume mm ³ <350	Volume mm ³ 350-2000	Volume mm ³ >2000
< 1.6mm	260 °C	260 °C	260 °C
1.6mm - 2.5mm	260 °C	250 °C	245 °C
> 2.5mm	250 °C	245 °C	245 °C

Table 12: Package classification reflow temperature, PB-free assembly, Note: refer to IPC/-JEDEC J-STD-020E

It is recommended to solder this module on the last reflow cycle of the PCB. For solder paste use a LFM-48W or Indium based SAC 305 alloy (Sn 96.5 / Ag 3.0 / Cu 0.5 / Indium 8.9HF / Type 3 / 89%) type 3 or higher.

The reflow profile must be adjusted based on the thermal mass of the entire populated PCB, heat transfer efficiency of the reflow oven and the specific type of solder paste used. Based on the specific process and PCB layout the optimal soldering profile must be adjusted and verified. Other soldering methods (e.g. vapor phase) have not been verified and have to be validated by the customer at their own risk. Rework is not recommended.

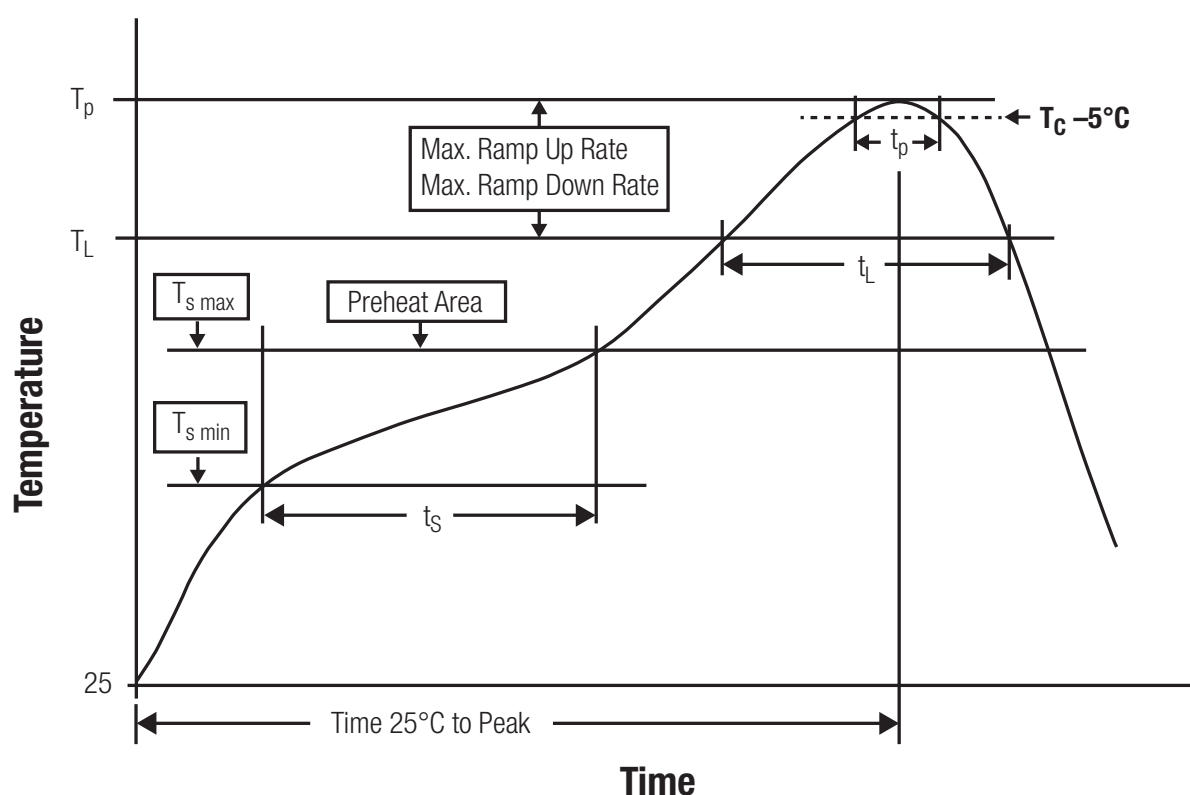


Figure 19: Reflow soldering profile

After reflow soldering, visually inspect the board to confirm proper alignment

20.2.2 Cleaning

Do not clean the product. Any residue cannot be easily removed by washing. Use a "no clean" soldering paste and do not clean the board after soldering.

- Do not clean the product with water. Capillary effects can draw water into the gap between the host PCB and the module, absorbing water underneath it. If water is trapped inside, it may short-circuit adjoining pads. The water may also destroy the label and ink-jet printed text on it.
- Cleaning processes using alcohol or other organic solvents may draw solder flux residues into the housing, which won't be detected in a post-wash inspection. The solvent may also destroy the label and ink-jet printed text on it.
- Do not use ultrasonic cleaning as it will permanently damage the part, particularly the crystal oscillators.

20.2.3 Other notations

- Conformal coating of the product will result in the loss of warranty. The RF shields will not protect the part from low-viscosity coatings.
- Do not attempt to improve the grounding by forming metal strips directly to the EMI covers or soldering on ground cables, as it may damage the part and will void the warranty.
- Always solder every pad to the host PCB even if some are unused, to improve the mechanical strength of the module.
- The part is sensitive to ultrasonic waves, as such do not use ultrasonic cleaning, welding or other processing. Any ultrasonic processing will void the warranty.

20.3 ESD handling

This product is highly sensitive to electrostatic discharge (ESD). As such, always use proper ESD precautions when handling. Make sure to handle the part properly throughout all stages of production, including on the host PCB where the module is installed. For ESD ratings, refer to the module series' maximum ESD section. For more information, refer to the relevant chapter 2. Failing to follow the aforementioned recommendations can result in severe damage to the part.

- the first contact point when handling the PCB is always between the local GND and the host PCB GND, unless there is a galvanic coupling between the local GND (for example work table) and the host PCB GND.
- Before assembling an antenna patch, connect the grounds.
- While handling the RF pin, avoid contact with any charged capacitors and be careful when contacting any materials that can develop charges (for example coaxial cable with around 50-80 pF/m, patch antenna with around 10 pF, soldering iron etc.)

- Do not touch any exposed area of the antenna to avoid electrostatic discharge. Do not let the antenna area be touched in a non ESD-safe manner.
- When soldering, use an ESD-safe soldering iron.

20.4 Safety recommendations

It is your duty to ensure that the product is allowed to be used in the destination country and within the required environment. Usage of the product can be dangerous and must be tested and verified by the end user. Be especially careful of:

- Use in areas with risk of explosion (for example oil refineries, gas stations).
- Use in areas such as airports, aircraft, hospitals, etc., where the product may interfere with other electronic components.

It is the customer's responsibility to ensure compliance with all applicable legal, regulatory and safety-related requirements as well as applicable environmental regulations. Disassembling the product is not allowed. Evidence of tampering will void the warranty.

- Compliance with the instructions in the product manual is recommended for correct product set-up.
- The product must be provided with a consolidated voltage source. The wiring must meet all applicable fire and security prevention standards.
- Handle with care. Avoid touching the pins as there could be ESD damage.

Be careful when working with any external components. When in doubt consult the technical documentation and relevant standards. Always use an antenna with the proper characteristics.



Since the module itself is not fused the voltage supply shall be fed from a limited power source according to EN 62368-1 class PS1.



Modules with high output power of up to 500mW, as for example the Thebe family, generate a high amount of warmth while transmitting. The manufacturer of the end device must take care of potentially necessary actions for his application.

21 Physical dimensions

21.1 Dimensions

Dimensions
17 x 27 x 4 mm

Table 13: Dimensions

21.2 Weight

Weight
3g

Table 14: Weight

21.3 Module drawing

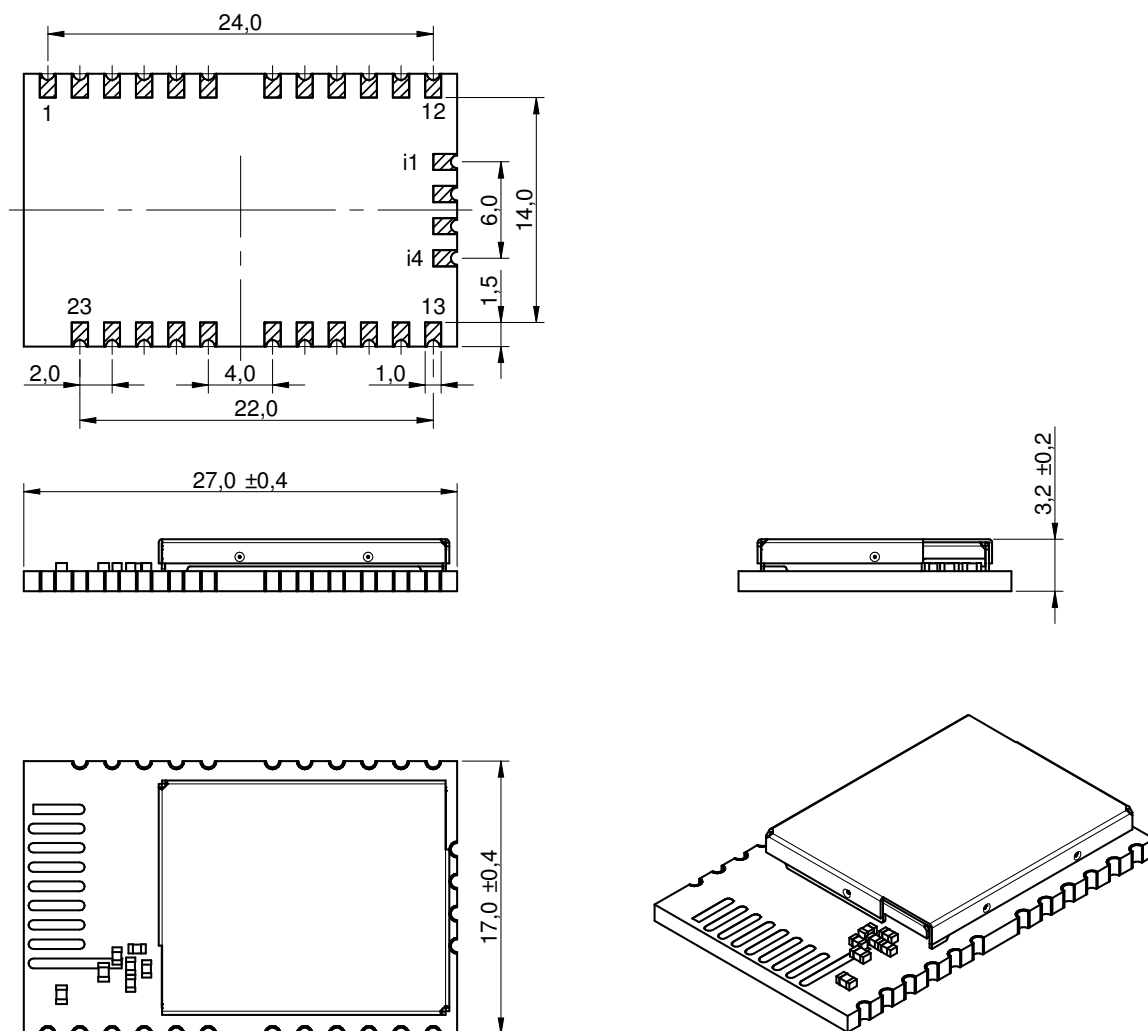


Figure 20: Module dimensions [mm]

21.4 Footprint

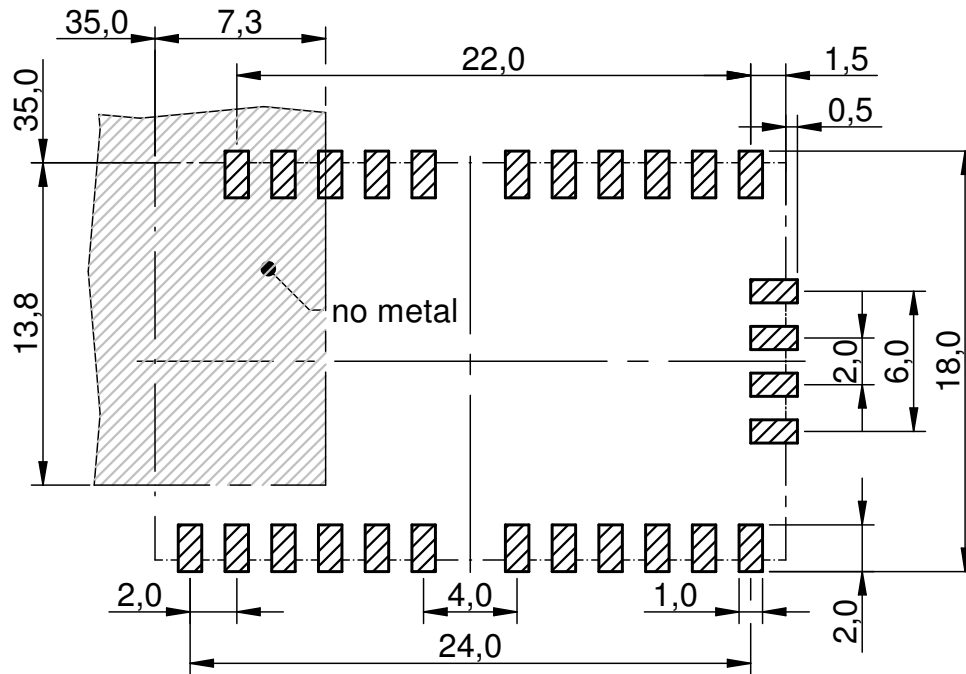


Figure 21: Footprint and dimensions [mm]

The following points have to be considered:

- To avoid the risk of short circuits, a minimum clearance of at least 14 mm between the opposing pad rows has to be maintained! No routing on the top layer of a carrier PCB (i.e. "under" the module) shall be performed.
- For the module variant with integrated antenna the marked corner area of 7.3 x 13.8 mm has to be kept free from metal, on any layer.
- The four bottom side pads are optionally for the firmware update using JTAG can be left open when JTAG update is not needed in the customer's application.
- This footprint is also compatible to the radio modules Tarvos-I, Tarvos-II, Thadeus and Titania.

21.5 Antenna free area

To avoid influence and mismatching of the antenna the recommended free area around the antenna should be maintained. As rule of thumb a minimum distance of metal parts to the antenna of $\lambda/10$ should be kept (see figure 21). Even though metal parts would influence the characteristic of the antenna, but the direct influence and matching keep an acceptable level.

22 Marking

22.1 Lot number

The 15 digit lot number is printed in numerical digits as well as in form of a machine readable bar code. It is divided into 5 blocks as shown in the following picture and can be translated according to the following table.

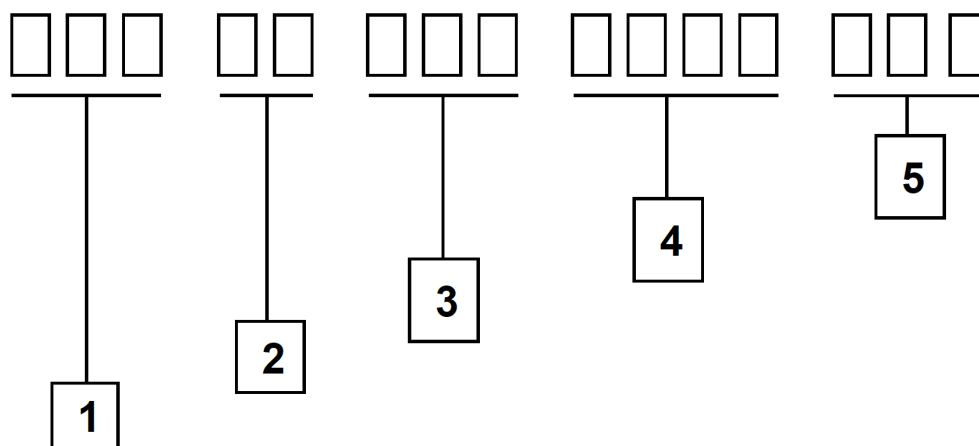


Figure 22: Lot number structure

Block	Information	Example(s)
1	eiSos internal, 3 digits	439
2	eiSos internal, 2 digits	01
3	Hardware version, 3 digits	V2.4 = 024, V12.2 = 122
4	Date code, 4 digits	1703 = week 03 in year 2017, 1816 = week 16 in year 2018
5	Firmware version, 3 digits	V3.2 = 302, V5.13 = 513

Table 15: Lot number details

As the user can perform a firmware update the printed lot number only shows the factory delivery state. The currently installed firmware can be requested from the module using the corresponding product specific command. The firmware version as well as the hardware version are restricted to show only major and minor version not the patch identifier.

22.2 General labeling information

The module labels may include the following fields:

- Manufacturer identification WE, Würth Elektronik or Würth Elektronik eiSos
- WE Order Code and/or article alias
- Serial number or MAC address
- Certification identifiers (CE, FCC ID, IC, ARIB,...)
- Barcode or 2D code containing the serial number or MAC address

The serial number includes the product ID (PID) and an unique 6 digit number. The first 1 to 3 digits represent the PID, then the "." marks the start of the 6 digit counter to create a unique product marking.

In case of small labels, the 3 byte manufacturer identifier (0x0018DA) of the MAC address is not printed on the labels. The 3 byte counter printed on the label can be used with this 0018DA to produce the full MAC address by appending the counter after the manufacturer identifier.

22.2.1 Example labels of Würth Elektronik eiSos products

2603011021001 C E
FCC ID: R7TAMB2220
IC: 5136A-AMB2220
SN: 107.002005

AMB2621
SN: 0A6495
FCCID: C E
R7TAMB2621

 **WE** C E
SN: 116.002641
2609011081001
AMB8826

Würth Elektronik
FCC ID: R7TAMB9826
IC: 5136A-AMB9826
SN: 124.000323
2609011091001

23 Information for Ex Protection

In case the end product should be used in Ex protection areas the following information can be used:

- The module itself is unfused.
- The maximum output power of the module is 14dBm.
- The total amount of capacitance of all capacitors is 45.7µF.
- The total amount of inductance of all inductors is 6.9µH.

24 Regulatory compliance information

24.1 Important notice EU

The use of RF frequencies is limited by national regulations. The Tarvos-III has been designed to comply with the R&TTE directive 1999/5/EC and the RED directive 2014/53/EU of the European Union (EU).

The Tarvos-III can be operated without notification and free of charge in the area of the European Union. However, according to the R&TTE / RED directive, restrictions (e.g. in terms of duty cycle or maximum allowed RF power) may apply.

24.2 Conformity assessment of the final product

The Tarvos-III is a subassembly. It is designed to be embedded into other products (products incorporating the Tarvos-III are henceforward referred to as "final products").

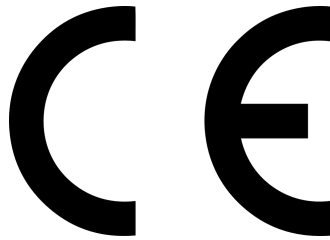
It is the responsibility of the manufacturer of the final product to ensure that the final product is in compliance with the essential requirements of the underlying national radio regulations. The conformity assessment of the subassembly Tarvos-III carried out by Würth Elektronik eiSos does not replace the required conformity assessment of the final product.

24.3 Exemption clause

Relevant regulation requirements are subject to change. Würth Elektronik eiSos does not guarantee the accuracy of the before mentioned information. Directives, technical standards, procedural descriptions and the like may be interpreted differently by the national authorities. Equally, the national laws and restrictions may vary with the country. In case of doubt or uncertainty, we recommend that you consult with the authorities or official certification organizations of the relevant countries. Würth Elektronik eiSos is exempt from any responsibilities or liabilities related to regulatory compliance.

Notwithstanding the above, Würth Elektronik eiSos makes no representations and warranties of any kind related to their accuracy, correctness, completeness and/or usability for customer applications. No responsibility is assumed for inaccuracies or incompleteness.

24.4 EU Declaration of conformity



EU DECLARATION OF CONFORMITY

Radio equipment: 2609011081000 & 2609011181000
2609026281001

The manufacturer: Würth Elektronik eiSos GmbH & Co. KG
Max-Eyth-Straße 1
74638 Waldenburg

This declaration of conformity is issued under the sole responsibility of the manufacturer.

Object of the declaration: 2609011081000 & 2609011181000
2609026281001

The object of the declaration described above is in conformity with the relevant Union harmonisation legislation: Directive 2014/53/EU and 2011/65/EU.

Following harmonised norms or technical specifications have been applied:

EN 300 220-1 V3.1.1 (2017-02)
EN 300 220-2 V3.1.1 (2017-02)
EN 301 489-1 V2.2.0 (Draft)
EN 301 489-3 V2.1.1 (Final draft)
EN 62479 : 2010
EN 62368-1:2014 + AC:2015

i.A. G. Eschardt

Trier, 7th of November 2018
Place and date of issue

25 Important information

The following conditions apply to all goods within the wireless connectivity product range of Würth Elektronik eiSos GmbH & Co. KG :

25.1 General customer responsibility

Some goods within the product range of Würth Elektronik eiSos GmbH & Co. KG contain statements regarding general suitability for certain application areas. These statements about suitability are based on our knowledge and experience of typical requirements concerning the areas, serve as general guidance and cannot be estimated as binding statements about the suitability for a customer application. The responsibility for the applicability and use in a particular customer design is always solely within the authority of the customer. Due to this fact, it is up to the customer to evaluate, where appropriate to investigate and to decide whether the device with the specific product characteristics described in the product specification is valid and suitable for the respective customer application or not. Accordingly, the customer is cautioned to verify that the documentation is current before placing orders.

25.2 Customer responsibility related to specific, in particular safety-relevant applications

It has to be clearly pointed out that the possibility of a malfunction of electronic components or failure before the end of the usual lifetime cannot be completely eliminated in the current state of the art, even if the products are operated within the range of the specifications. The same statement is valid for all software and firmware parts contained in or used with or for products in the wireless connectivity product range of Würth Elektronik eiSos GmbH & Co. KG . In certain customer applications requiring a high level of safety and especially in customer applications in which the malfunction or failure of an electronic component could endanger human life or health, it must be ensured by most advanced technological aid of suitable design of the customer application that no injury or damage is caused to third parties in the event of malfunction or failure of an electronic component.

25.3 Best care and attention

Any product-specific datasheets, manuals, application notes, PCN's, warnings and cautions must be strictly observed in the most recent versions and matching to the products firmware revisions. This documents can be downloaded from the product specific sections on the wireless connectivity homepage.

25.4 Customer support for product specifications

Some products within the product range may contain substances, which are subject to restrictions in certain jurisdictions in order to serve specific technical requirements. Necessary information is available on request. In this case, the field sales engineer or the internal sales person in charge should be contacted who will be happy to support in this matter.

25.5 Product improvements

Due to constant product improvement, product specifications may change from time to time. As a standard reporting procedure of the Product Change Notification (PCN) according to the JEDEC-Standard, we inform about major changes in hard- or firmware. In case of further queries regarding the PCN, the field sales engineer, the internal sales person or the technical support team in charge should be contacted. The basic responsibility of the customer as per section 25.1 and 25.2 remains unaffected.

25.6 Product life cycle

Due to technical progress and economical evaluation we also reserve the right to discontinue production and delivery of products. As a standard reporting procedure of the Product Termination Notification (PTN) according to the JEDEC-Standard we will inform at an early stage about inevitable product discontinuance. According to this, we cannot ensure that all products within our product range will always be available. Therefore, it needs to be verified with the field sales engineer or the internal sales person in charge about the current product availability expectancy before or when the product for application design-in disposal is considered. The approach named above does not apply in the case of individual agreements deviating from the foregoing for customer-specific products.

25.7 Property rights

All the rights for contractual products produced by Würth Elektronik eiSos GmbH & Co. KG on the basis of ideas, development contracts as well as models or templates that are subject to copyright, patent or commercial protection supplied to the customer will remain with Würth Elektronik eiSos GmbH & Co. KG. Würth Elektronik eiSos GmbH & Co. KG does not warrant or represent that any license, either expressed or implied, is granted under any patent right, copyright, mask work right, or other intellectual property right relating to any combination, application, or process in which Würth Elektronik eiSos GmbH & Co. KG components or services are used.

25.8 General terms and conditions

Unless otherwise agreed in individual contracts, all orders are subject to the current version of the "General Terms and Conditions of Würth Elektronik eiSos Group", last version available at www.we-online.com.

26 Legal notice

26.1 Exclusion of liability

Würth Elektronik eiSos GmbH & Co. KG considers the information in this document to be correct at the time of publication. However, Würth Elektronik eiSos GmbH & Co. KG reserves the right to modify the information such as technical specifications or functions of its products or discontinue the production of these products or the support of one of these products without any written announcement or notification to customers. The customer must make sure that the information used corresponds to the latest published information. Würth Elektronik eiSos GmbH & Co. KG does not assume any liability for the use of its products. Würth Elektronik eiSos GmbH & Co. KG does not grant licenses for its patent rights or for any other of its intellectual property rights or third-party rights. Notwithstanding anything above, Würth Elektronik eiSos GmbH & Co. KG makes no representations and/or warranties of any kind for the provided information related to their accuracy, correctness, completeness, usage of the products and/or usability for customer applications. Information published by Würth Elektronik eiSos GmbH & Co. KG regarding third-party products or services does not constitute a license to use such products or services or a warranty or endorsement thereof.

26.2 Suitability in customer applications

The customer bears the responsibility for compliance of systems or units, in which Würth Elektronik eiSos GmbH & Co. KG products are integrated, with applicable legal regulations. Customer acknowledges and agrees that it is solely responsible for compliance with all legal, regulatory and safety-related requirements concerning its products, and any use of Würth Elektronik eiSos GmbH & Co. KG components in its applications, notwithstanding any applications-related information or support that may be provided by Würth Elektronik eiSos GmbH & Co. KG. Customer represents and agrees that it has all the necessary expertise to create and implement safeguards which anticipate dangerous consequences of failures, monitor failures and their consequences lessen the likelihood of failures that might cause harm and take appropriate remedial actions. The customer will fully indemnify Würth Elektronik eiSos GmbH & Co. KG and its representatives against any damages arising out of the use of any Würth Elektronik eiSos GmbH & Co. KG components in safety-critical applications.

26.3 Trademarks

AMBER wireless is a registered trademark of Würth Elektronik eiSos GmbH & Co. KG. All other trademarks, registered trademarks, and product names are the exclusive property of the respective owners.

26.4 Usage restriction

Würth Elektronik eiSos GmbH & Co. KG products have been designed and developed for usage in general electronic equipment only. This product is not authorized for use in equipment where a higher safety standard and reliability standard is especially required or where a failure of the product is reasonably expected to cause severe personal injury or death, unless the parties have executed an agreement specifically governing such use. Moreover,

Würth Elektronik eiSos GmbH & Co. KG products are neither designed nor intended for use in areas such as military, aerospace, aviation, nuclear control, submarine, transportation (automotive control, train control, ship control), transportation signal, disaster prevention, medical, public information network etc. . Würth Elektronik eiSos GmbH & Co. KG must be informed about the intent of such usage before the design-in stage. In addition, sufficient reliability evaluation checks for safety must be performed on every electronic component, which is used in electrical circuits that require high safety and reliability function or performance. By using Würth Elektronik eiSos GmbH & Co. KG products, the customer agrees to these terms and conditions.

27 License agreement for Würth Elektronik eiSos GmbH & Co. KG connectivity product firmware and software

Agreement between You and Würth Elektronik eiSos GmbH & Co. KG

The following terms of this license agreement for the usage of the Würth Elektronik eiSos GmbH & Co. KG wireless connectivity product firmware are a legal agreement between you and Würth Elektronik eiSos GmbH & Co. KG and/or its subsidiaries and affiliates (collectively, "Würth Elektronik eiSos "). You hereby agree that this license agreement is applicable to the product and the incorporated software and firmware (collectively, "Firmware") made available by Würth Elektronik eiSos in any form, including but not limited to binary, executable or source code form.

The Firmware included in any Würth Elektronik eiSos wireless connectivity product is purchased to you on the condition that you accept the terms and conditions of this license agreement. You agree to comply with all provisions under this license agreement.

27.1 Limited license

Würth Elektronik eiSos hereby grants you a limited, non-exclusive, non-transferable and royalty-free license to use the Firmware under the conditions that will be set forth in this license agreement. You are free to use the provided Firmware only in connection with one of the products from Würth Elektronik eiSos to the extent described in this license agreement. You are not entitled to change or alter the provided Firmware.

You are not entitled to transfer the Firmware in any form to third parties without prior written consent of Würth Elektronik eiSos .

You are not allowed to reproduce, translate, reverse engineer, read out, decompile, disassemble or create derivative works of the incorporated Firmware in whole or in part.

No more extensive rights to use and exploit the Firmware granted to you.

27.2 Usage and obligations

The responsibility for the applicability and use of the Würth Elektronik eiSos wireless connectivity product with the incorporated Firmware in a particular customer design is always solely within the authority of the customer. Due to this fact, it is up to you to evaluate and investigate, where appropriate, and to decide whether the device with the specific product characteristics described in the product specification is valid and suitable for your respective application or not.

You are responsible for using the Würth Elektronik eiSos Product with the incorporated Firmware in compliance with all applicable product liability and product safety laws. You acknowledge to minimize the risk of loss and harm to individuals and bear the risk for failure leading to personal injury or death due to your usage of the product.

Würth Elektronik eiSos ' products with the incorporated Firmware are not authorized for use in safety-critical applications, or where a failure of the product is reasonably expected to cause severe personal injury or death. Moreover, Würth Elektronik eiSos ' products with the incorporated Firmware are neither designed nor intended for use in areas such as military, aerospace, aviation, nuclear control, submarine, transportation (automotive control, train

control, ship control), transportation signal, disaster prevention, medical, public information network etc. You shall inform Würth Elektronik eiSos about the intent of such usage before design-in stage. In certain customer applications requiring a very high level of safety and in which the malfunction or failure of an electronic component could endanger human life or health, you must ensure to have all necessary expertise in the safety and regulatory ramifications of your applications. You acknowledge and agree that you are solely responsible for all legal, regulatory and safety-related requirements concerning your products and any use of Würth Elektronik eiSos' products with the incorporated Firmware in such safety-critical applications, notwithstanding any applications-related information or support that may be provided by Würth Elektronik eiSos. **YOU SHALL INDEMNIFY WÜRTH ELEKTRONIK EISOS AGAINST ANY DAMAGES ARISING OUT OF THE USE OF WÜRTH ELEKTRONIK EISOS' PRODUCTS WITH THE INCORPORATED FIRMWARE IN SUCH SAFETY-CRITICAL APPLICATIONS.**

27.3 Ownership

The incorporated Firmware created by Würth Elektronik eiSos is and will remain the exclusive property of Würth Elektronik eiSos.

27.4 Firmware update(s)

You have the opportunity to request the current and actual firmware for a bought wireless connectivity Product within the time of warranty. However, Würth Elektronik eiSos has no obligation to update a modules firmware in their production facilities, but can offer this as a service on request. The upload of firmware updates falls within your responsibility, e.g. via ACC or another software for firmware updates. Firmware updates will not be communicated automatically. It is within your responsibility to check the current version of a firmware in the latest version of the product manual on our website. The revision table in the product manual provides all necessary information about firmware updates. There is no right to be provided with binary files, so called "firmware images", those could be flashed through JTAG, SWD, Spi-Bi-Wire, SPI or similar interfaces.

27.5 Disclaimer of warranty

THE FIRMWARE IS PROVIDED "AS IS". YOU ACKNOWLEDGE THAT WÜRTH ELEKTRONIK EISOS MAKES NO REPRESENTATIONS AND WARRANTIES OF ANY KIND RELATED TO, BUT NOT LIMITED TO THE NON-INFRINGEMENT OF THIRD PARTIES' INTELLECTUAL PROPERTY RIGHTS OR THE MERCHANTABILITY OR FITNESS FOR YOUR INTENDED PURPOSE OR USAGE. WÜRTH ELEKTRONIK EISOS DOES NOT WARRANT OR REPRESENT THAT ANY LICENSE, EITHER EXPRESS OR IMPLIED, IS GRANTED UNDER ANY PATENT RIGHT, COPYRIGHT, MASK WORK RIGHT, OR OTHER INTELLECTUAL PROPERTY RIGHT RELATING TO ANY COMBINATION, MACHINE, OR PROCESS IN WHICH THE WÜRTH ELEKTRONIK EISOS' PRODUCT WITH THE INCORPORATED FIRMWARE IS USED. INFORMATION PUBLISHED BY WÜRTH ELEKTRONIK EISOS REGARDING THIRD-PARTY PRODUCTS OR SERVICES DOES NOT CONSTITUTE A LICENSE FROM WÜRTH ELEKTRONIK EISOS TO USE SUCH PRODUCTS OR SERVICES OR A WARRANTY OR ENDORSEMENT THEREOF.

27.6 Limitation of liability

Any liability not expressly provided by Würth Elektronik eiSos shall be disclaimed. You agree to hold us harmless from any third-party claims related to your usage of the Würth Elektronik eiSos ' products with the incorporated Firmware. Würth Elektronik eiSos disclaims any liability for any alteration, development created by you or your customers as well as for any combination with other products.

27.7 Applicable law and jurisdiction

Applicable law to this license agreement shall be the laws of the Federal Republic of Germany. Any dispute, claim or controversy arising out of or relating to this license agreement shall be resolved and finally settled by the court competent for the location of Würth Elektronik eiSos ' registered office.

27.8 Severability clause

If a provision of this license agreement is or becomes invalid, unenforceable or null and void, this shall not affect the remaining provisions of the agreement. The parties shall replace any such provisions with new valid provisions that most closely approximate the purpose of the agreement.

27.9 Miscellaneous

This license agreement constitutes the entire understanding and merges all prior discussions between the parties relating to this license agreement.

No ancillary verbal agreements have been made and no such agreements shall be valid. Any additions and amendments to this license agreement shall require the written form in order to be binding.

We recommend you to be updated about the status of new firmware, which is available on our website or in our data sheet, and to implement new firmware in your device where appropriate. In case only firmware is provided, we expressly exclude the automatic receipt of PCN information. Thus, new firmware will also not be provided automatically.

By ordering a wireless connectivity Product, you accept this license agreement in all terms.

List of Figures

1	Block diagram of the module variants with internal PCB antenna and antenna pad	9
2	Typical behavior of transmit and receive current in relation to applied supply voltage	13
3	Pinout (top view)	15
4	Power up	19
5	Wake-up from standby	65
6	Wake-up from shutdown	65
7	Range extension using several repeaters	72
8	Example network	74
9	Layout	83
10	Placement of the module with integrated antenna	84
11	Dimensioning the antenna feed line as micro strip	84
12	169 MHz dipole-antenna	87
13	434 MHz dipole-antenna	88
14	868 MHz dipole-antenna	89
15	868 MHz magnet foot antenna with 1.5 m antenna cable	90
16	2.4 GHz dipole-antenna	91
17	Assembly diagram	95
18	Top and Bottom Layer	96
19	Reflow soldering profile	98
20	Module dimensions [mm]	102
21	Footprint and dimensions [mm]	103
22	Lot number structure	104

List of Tables

1	Ordering information	10
2	Recommended operating conditions	11
3	Absolute maximum ratings	11
4	Power consumption @3.6V	12
5	Radio characteristics	13
6	Pin characteristics	14
7	Pinout	17
8	Message overview	39
9	Radio profiles	42
10	Channel assignment	67
11	Classification reflow soldering profile, Note: refer to IPC/JEDEC J-STD-020E	97
12	Package classification reflow temperature, PB-free assembly, Note: refer to IPC/JEDEC J-STD-020E	98
13	Dimensions	101
14	Weight	101
15	Lot number details	104



more than you expect



**Internet
of Things**



**Monitoring
& Control**



**Automated Meter
Reading**

Contact:

Würth Elektronik eiSos GmbH & Co. KG
Division Wireless Connectivity & Sensors

Rudi-Schillings-Str. 31
54296 Trier
Germany

Tel.: +49 651 99355-0
Fax.: +49 651 99355-69
www.we-online.com/wireless-connectivity

