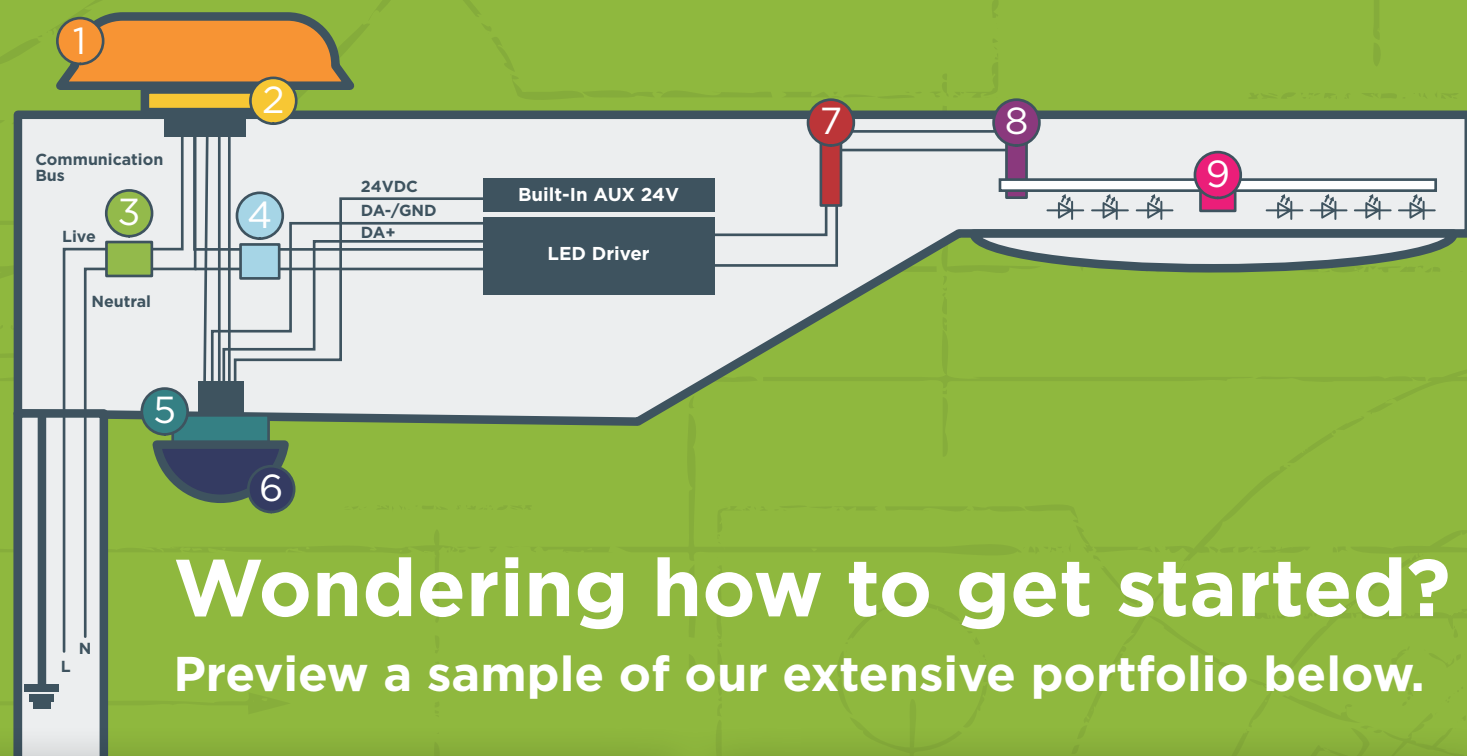


THE SMARTPRINT

YOUR RESOURCE FOR SUSTAINABLE LIGHTING ARCHITECTURE

The future of energy-efficient street lighting depends on smart, accessible products that are easy to install, modular for ultimate flexibility, and interoperable with any number of international devices and standards. If that list sounds like wishful thinking, visit TE Connectivity — we are your one-stop-shop for safer, more sustainable, and more productive lighting systems.



Wondering how to get started?
Preview a sample of our extensive portfolio below.

1 Control Device (Top)

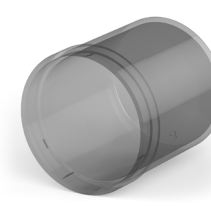
Achieve greater sealing and design flexibility.



LUMAWISE Endurance N
76mm Base
[2336396-1](#)



LUMAWISE Endurance N
81mm Base
[2213871-2](#)



LUMAWISE Endurance N
76mm Cover
[2306128-1](#)



LUMAWISE Endurance N
81mm Cover
[2306130-1](#)



LUMAWISE Endurance N
Shorting Cap
[2328118-1](#)



LUMAWISE Endurance N
Open Cap
[2328118-3](#)

5 Zhaga Interface - Book 18

Simplify installation and achieve both greater flexibility and sealing.



LUMAWISE Endurance S
S2 Receptacle
[2363638-1](#)

6 Control Device (Bottom)

Interoperable and Zhaga-D4i compatible solutions for energy savings.



LUMAWISE Motion
[2388426-1](#)



LUMAWISE Motion
Mask
[2396399-1](#)



LUMAWISE Endurance S
Sealing Cap
[2213795-1](#)

2 ANSI Interface

Drive greater control between driver and luminaire.



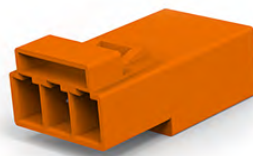
LUMAWISE Endurance N
Receptacle
[2213362-2](#)



Sealing Gasket
[2213469-1](#)

7 Wire-to-Wire Connector

Simplify installation with LED lighting interconnects.



LIGHT-N-LOK
[1-2834049-3](#)



SLIMSEAL
[2-2834074-2](#)

3 Power Entry Terminal Block

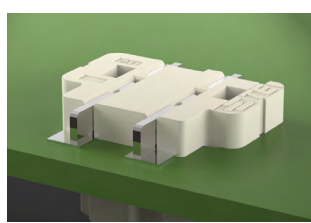
Simplify wire input and multi-wire output connections.



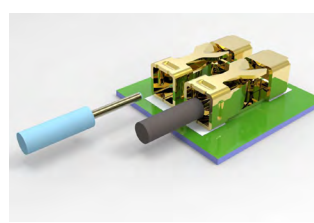
LUMAWISE Terminal Block
[2382635-1](#)

8 Wire-to-Board Connector

Save Printed Circuit Board (PCB) space and simplify installation.



Inverted Thru Board
[2213188-1](#)



Releasable Slim Contact
[2834167-3](#)

4 Wire-to-Wire Connector

Simplify installation and repair with tool-less connectors.



Push Grip
[2324697-3](#)



Twist Grip
[2299509-1](#)

9 Board-to-Board Connector

Reduce design time and inventory, and simplify assembly.



Hermaphroditic Blade and Receptacle Connectors
[2058703-1](#)

TE experts are here to help you design an interoperable, energy-efficient, modular lighting solution.
Connect with us today.

[te.com](#)

©2023 TE Connectivity. All Rights Reserved.

TE Connectivity, TE, TE connectivity (logo), EVERY CONNECTION COUNTS, and LUMAWISE are trademarks owned or licensed by TE Connectivity. All other logos, products and/or company names referred to herein might be trademarks of their respective owners.

While TE has made every reasonable effort to ensure the accuracy of the information in this brochure, TE does not guarantee that it is error-free, nor does TE make any other representation, warranty or guarantee that the information is accurate, correct, reliable or current. TE reserves the right to make any adjustments to the information contained herein at any time without notice. TE expressly disclaims all implied warranties regarding the information contained herein, including, but not limited to, any implied warranties of merchantability or fitness for a particular purpose. The dimensions in this catalog are for reference purposes only and are subject to change without notice. Specifications are subject to change without notice. Consult TE for the latest dimensions and design specifications.