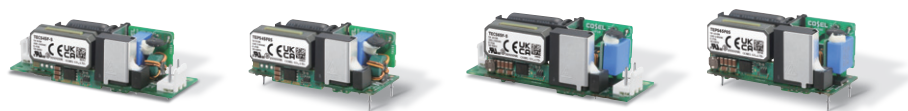


# TECS/TEPS series

NEW

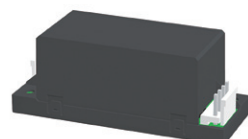


Model		TECS45F	TEPS45F	TECS65F	TEPS65F
Input Voltage		85-264VAC			
Output Voltage / Current	5V	8A		10A	
	12V	3.8A		5.45A	
	24V	1.9A		2.75A	
Efficiency (100VAC / 230VAC, Io=100%) *24VDCout		91.5% / 92.5%		92.5% / 93.5%	
Leakage Current (240VAC, 60Hz, Io=100%)		0.25mA Max.			
Operating Ambient Temperature		- 10℃ to +70℃ (Derating is required.)			
Safety Standard Approvals		UL62368-1, C-UL (Equivalent to CAN/CSA-C22.2 No.62368-1) , EN62368-1			
Safety Standard Compliant		DEN-AN			
Conducted Noise		CISPR11-B, CISPR32-B, EN55011-B, EN55032-B, FCC Part 15-B, FCC Part 18-B, VCCI-B Compliant			
EMC Immunity		IEC61000-3-2 (Class A) Compliant *No PFC			
Case Size (W×H×D) mm [Inches]		25.4 x 23.5 x 76.2 [1.00 x 0.93 x 3.00]	25.4 x 24.0 x 58.5 [1.00 x 0.94 x 2.30]	25.4 x 27.0 x 76.2 [1.00 x 1.06 x 3.00]	25.4 x 27.5 x 58.5 [1.00 x 1.08 x 2.30]

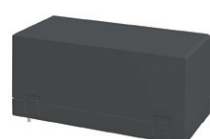
Option (Scheduled to be available in Yr. 2024.)

## Case Option -N

"-N" option can be prevented from foreign substances from outside and suitable for use in harshness circumstances.



Connector Type "TECS"



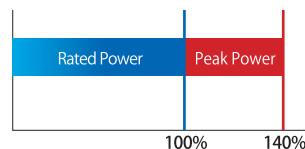
Pin Type "TEPS"

\*Shape may be different. Please note kindly.

## Peak Option -H

Peak Power Approx. **140%**  
(12VDC, 24VDC)

Can load 1.4 times rated output current as peak power. Applicable for start-up with big rush current.



Compact, High Power Density, High Efficiency | **TECS/TEPS series**

# COSEL

Compact Size  
AC-DC Power Supply

# TECS/TEPS series



TECS45F



TEPS45F



TECS65F



TEPS65F

# INDUSTRIAL 45/65W

NEW

## Head Office COSEL CO., LTD.

1-6-43 Kamiakae-machi, Toyama 930-0816, Japan | Phone +81-76-432-8152 | E-mail sales@cosel.co.jp | URL https://en.cosel.co.jp

## Worldwide Sales/Support Network

### (AMERICA) COSEL U.S.A., INC.

Phone (Free) +1-888-661-1705

E-mail sales@coselusa.com

URL https://www.coselusa.com

《Engineering and Technical Support》

Phone (Free) +1-888-661-1692

E-mail techsupport@coselusa.com

### (EUROPE) COSEL EUROPE GmbH

Phone +49-69-95 00 79-0

E-mail sales@cosелеurope.eu

URL https://www.coseleurope.eu

《Engineering and Technical Support》

E-mail techsupport@cosелеurope.eu

### (ASIA) COSEL ASIA LTD.

Phone +852-2305-2712

E-mail sales@coselasia.com

URL https://www.coselasia.com

COSEL (SHANGHAI) ELECTRONICS CO., LTD.

Phone +86-21-6440-0381

E-mail sales@coselasia.cn

URL https://www.coselasia.cn

# TECS/TEPS series

## 1X3 inch Foot Print One of the Highest Power Density in the world

Suitable for Various Applications like Industrial, Building and Consumer Equipment.  
Contributes Green Activities by its High Efficiency and Low Power Consumption.

**2WAYS X Compatible**



Original Size

### Compact / High Efficiency

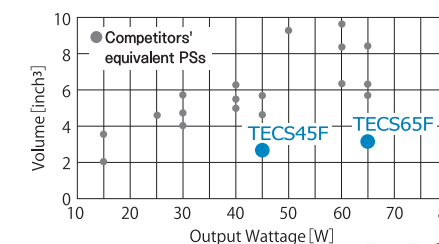
## Compact, High Power and High Density Power Supply

TE series uses Wide Band Gap Semi-conductor (GaN HEMT), Active Clump Fry Back Circuit (65W) and High Frequency PCB Transformer. The TE series can achieve High Efficiency by those technologies and is suitable for Various Applications.

Can save space  
in application

#### Compact

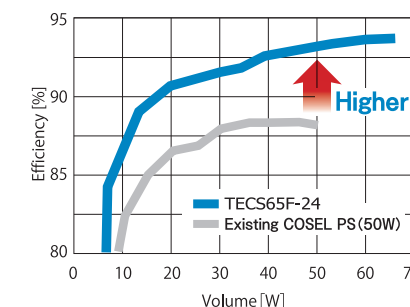
Volume Comparison between TE series and Competitors' equivalent PSs (connector type)



Volume Ratio: Max. **1/2**

#### High Efficiency

Efficiency Comparison (at 230VAC)



**3-5% Higher**

Achieved Higher Efficiency  
by using GaN HEMT

**Low Standby  
Power Consumption**

**0.2W** (Typ.) (at 230VAC)

Contributes to decrease Heat  
in Application by its High Efficiency

### Interface

## 2 Types of Interface

Pin Type Connector Type

**Compatible between 45 / 65W  
The Mounting Dimensions  
are the Same.**

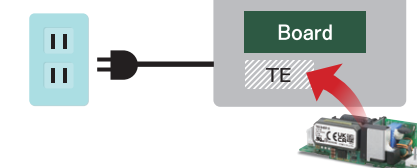
Multi-Connections in various applications by 2 Types of Interface.

### Class II

## Suitable for Handy Type Applications

#### No Need of FG Connection

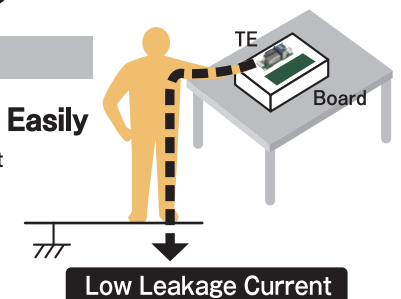
Achieves "Low Noise" without FG Connection  
Meets FCC Class B Handy Type Application



#### Low Leakage Current

### Meets Safety Standard Easily

Much decreased leakage current  
in secondary side. Can add  
another power supply or EMI  
filter easily by the low leakage  
current of TE series.



### Equipment in Building



- Equipment for Smart Office
- Security Equipment
- General Industry Equipment
- Payment Terminals
- Related Equipment in Building

### Consumer Equipment



- Equipment for Smart Home
- Security Equipment
- Measurement Equipment
- Office Automation Equipment
- Various Compact Control Terminals