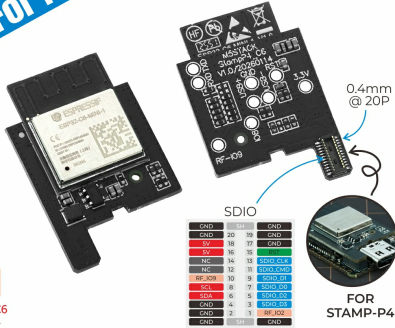


Stamp-AddOn C6 For P4

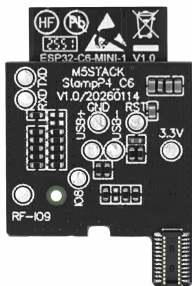
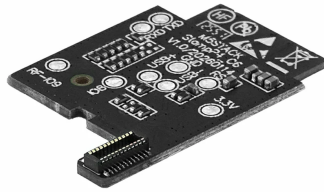
SKU:A172

Stamp
AddOn C6
For P4



ESP32-C6
MINI-1
2.4GHz Wi-Fi 6
ESP32-C6-MINI-1-N4

FOR
STAMP-P4





Description

Stamp-AddOn C6 For P4 is a Wi-Fi expansion module based on the ESP32-C6-MINI-1-N4, specifically designed to extend the wireless communication capabilities of the ESP32-P4 series modules, supporting 2.4GHz Wi-Fi 6. The module communicates at high speed with Stamp-P4 via the onboard SDIO interface, quickly expanding high-performance wireless connectivity. It is suitable for scenarios such as smart security gateways, industrial HMI interactive terminals, and complex edge AI nodes, helping developers efficiently build embedded products with full connectivity capabilities.

Features

- ESP32-C6-MINI-1-N4 core controller
 - 4MB Flash
 - 2.4GHz Wi-Fi 6
- 0.4mm@20P SDIO onboard interface, adapted for Stamp-P4
- Development Platform
 - UiFlow2
 - Arduino IDE

Includes

- 1 x Stamp-AddOn C6 For P4
- 1 x M1.2 * 3mm cap head machine screw
- 1 x Hex Key L-Shape 0.9mm (For M1.2 Screw)

Applications

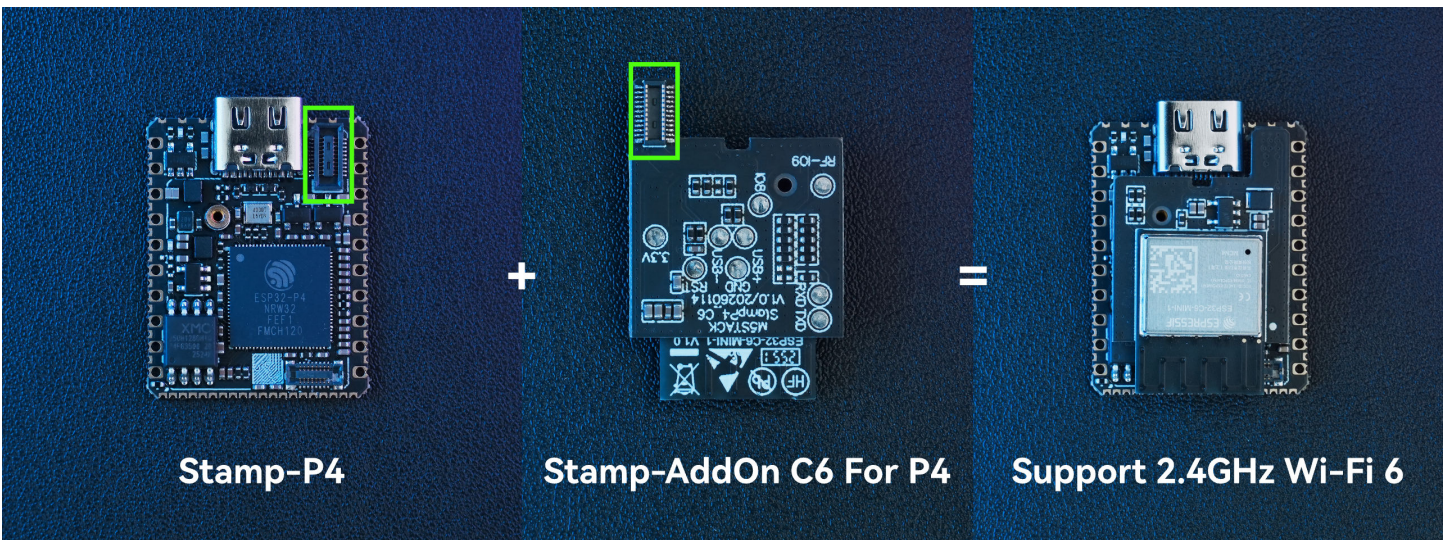
- Smart security gateway
- Industrial HMI interactive terminal
- Complex edge AI node

Specifications

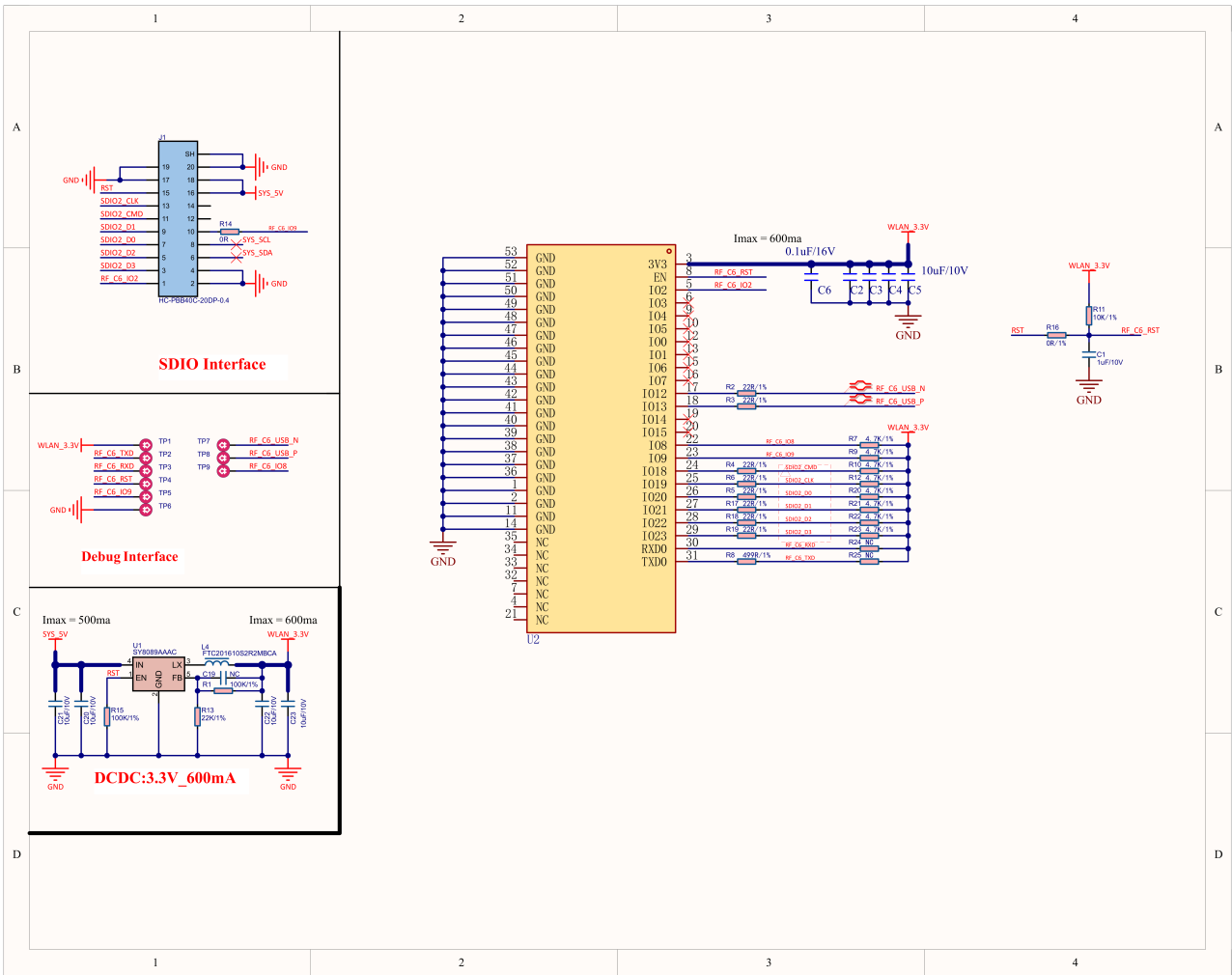
Specification	Parameter
SoC	ESP32-C6FH4 (RISC-V 32-bit single-core processor 160 MHz + RISC-V 32-bit single-core low-power co-processor 20 MHz)
Flash	4MB
DC-DC	SY8089AAAC
Input Voltage	DC 5V
Module Resource Interface	SDIO
SDIO Interface Specification	HC-PBB40C-20DP-0.4V-02
Adapted Device	Stamp-P4
Wireless Protocol	2.4GHz Wi-Fi 6
Operating Temperature	0 ~ 40°C
Product Size	27.0 x 18.0 x 4.0mm
Product Weight	1.6g
Package Size	138.0 x 93.0 x 6.0mm
Gross Weight	5.7g

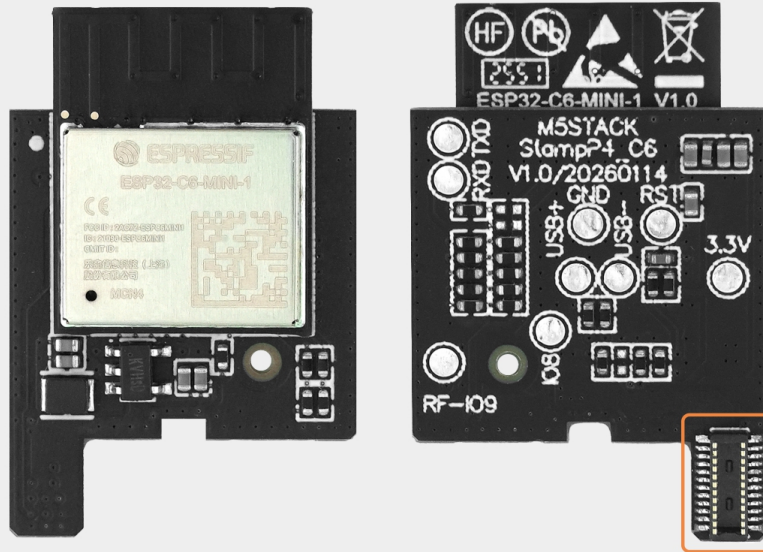
Learn

Installation Diagram



- Stamp-AddOn C6 For P4 Schematics PDF





STAMP
**AddOn C6
For P4**

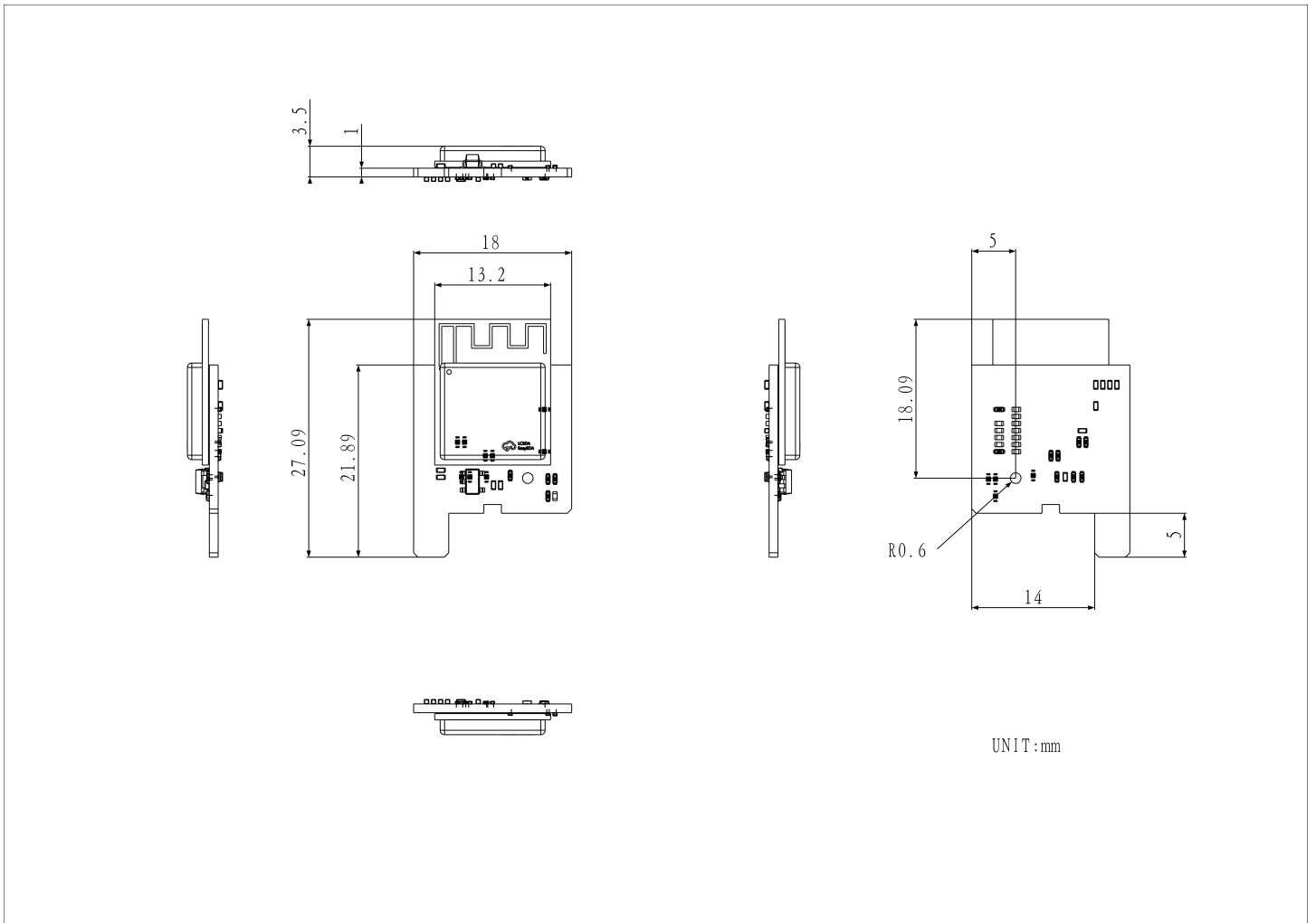
POWER SDIO GND

SDIO

GND	SH	GND	
GND	20	19	GND
5V	18	17	GND
5V	16	15	GND
NC	14	13	SDIO_CLK
NC	12	11	SDIO_CMD
RF-IO9	10	9	SDIO_D1
SCL	8	7	SDIO_D0
SDA	6	5	SDIO_D2
GND	4	3	SDIO_D3
GND	2	1	RF-IO2
GND	SH	GND	

Model Size

[Stamp-AddOn C6 For P4 Model Size PDF](#)



Datasheets

- [ESP32-C6](#)

Softwares

Arduino

- [Stamp-AddOn C6 For P4 Arduino Wi-Fi Example](#)

Video

- [Stamp-P4 and Stamp-AddOn C6 For P4 Product Introduction and Functional Demonstration](#)

[A172_and_S013_introduce_video_EN.mp4](#)