

WRL-15031 Wi-Fi® IR Blaster

WRL-15031

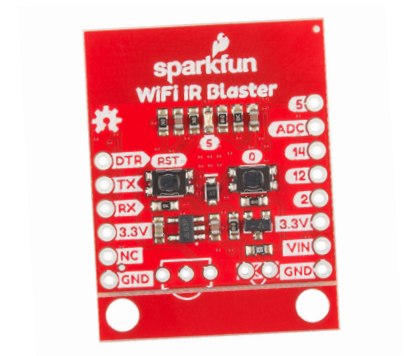
Product Overview

05-16-2022

For the most up-to-date information, visit www.mouser.com or the supplier's website.

Description

SparkFun WRL-15031 Wi-Fi IR Blaster is designed in such a way that it connects legacy infrared-controlled devices to a Wi-Fi network. This IR blaster can be connected through smart home devices, can control a TV through a web browser, and schedule triggers to IR-controlled LED strips. The IR Blaster combines a Wi-Fi/microcontroller chip (ESP8266) with IR receivers and IR emitters. The chip is programmed in such a way that can provide an interface between MQTT, TCP, infrared-controlled devices, and HTTP. This chip is also equipped with a printed circuit board antenna, a crystal, and a 4MB Flash.

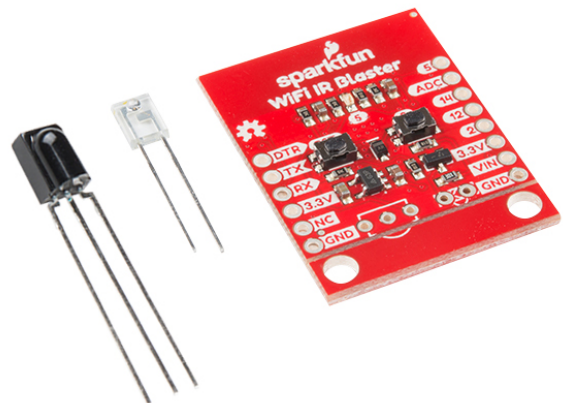


Features

- ESP12 module
- ESP8266 microcontroller chip
- 4MB Flash
- PCB trace antenna
- IR transmitter
- IR receiver

Kit Contents

- SparkFun Wi-Fi IR blaster
- LTE-302 IR emitter
- TSOP382 IR detector



Mouser Part Number

[View Part](#)

To learn more, visit <https://www.mouser.com/new/sparkfun/sparkfun-wifi-ir-blaster/>