

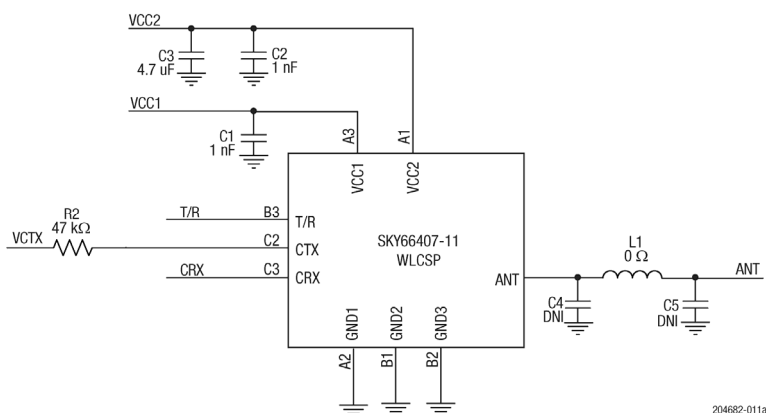
## Evaluation Board Description

The SKY66407-11 Evaluation Board is used to test the performance of the SKY66407-11 front-end module. The board is optimized for evaluation, experimentation, and investigation with a BLE or 802.15.4 signal source. The design and layout can be quickly and easily transferred into a production design.

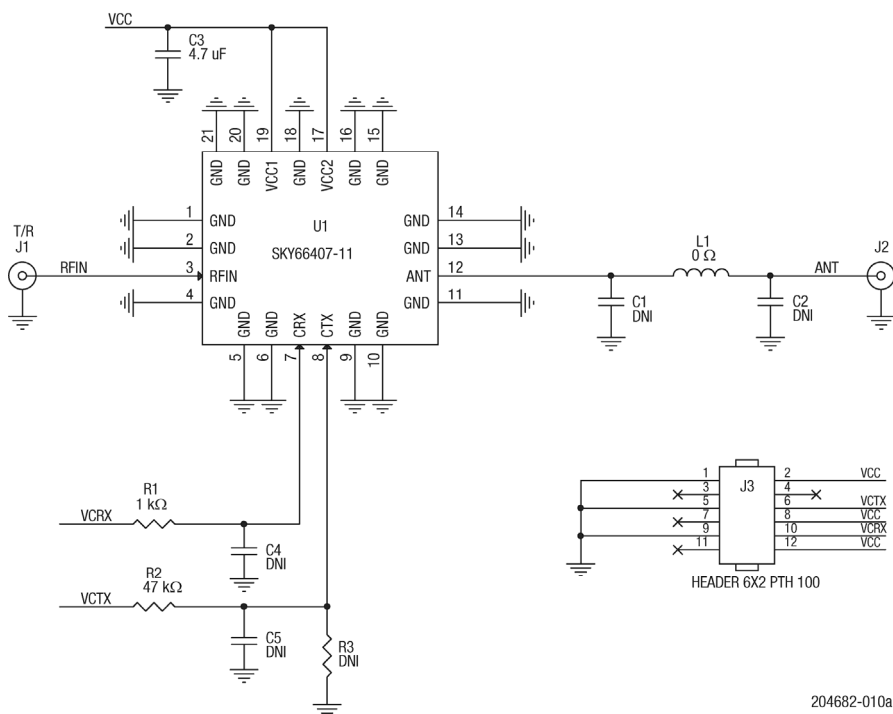
A reference design schematic is provided in Figure 12. An Evaluation Board schematic diagram is provided in Figure 13. A photograph of the Evaluation Board is shown in Figure 14. The Evaluation Board Bill of Materials (BOM) is listed in Table 8.

## Evaluation Board Setup Procedure

1. Connect system ground to pin 1 of the J3 header.
2. Apply 3.3 V to pin 2 of the J3 header.
3. Select a path according to the information in Table 6 (L = 0 V, H = 3.3 V) using pin 6 (VCTX) and pin 10 (VCRX) of the J3 header.



**Figure 12. SKY66407-11 Reference Design Schematic**



**Figure 13. SKY66407-11 Evaluation Board Schematic**

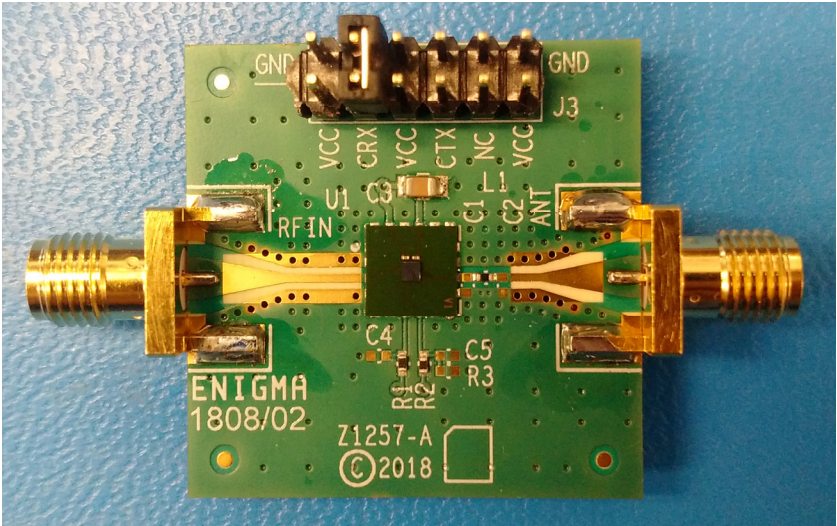


Figure 14. SKY66407-11 Evaluation Board

Table 8. SKY66407-11 Evaluation Board Bill of Materials (BOM)

Reference	Value	Manufacturer	Mfr Part Number	Package	Description
C1, C2, R3, C4, C5	DNI			0402	DNI
C3	4.7uF	muRata	GRM21BR71C475KA73L	0805	Ceramic capacitor, 4.7 uF, 16 V, X7R
J1,J2	SMA	Johnson Components	142-0701-851	End Launch	Connector SMA jack, STR, 50 $\Omega$ , edge mount
J3	Header 6X2 PTH 100	Samtec	TSW-106-07-G-D		Connector header, 12 POS, 100" DL gold
L1	0 $\Omega$			0402	
PCB1	Z1257-A	Skyworks	Z1257-A		PCB
R1	1 k $\Omega$	Panasonic	ERJ-PA2F1001X	0402	Resistor, SMD, 1 k $\Omega$ , 1%, 1/5 W
R2	47 k $\Omega$	Multi-vendor	5424R27-134	0402	Resistor, 47 k $\Omega$ , jumper, 0.063 W
U1	SKY66407-11 CSP	Skyworks Solutions			