

SHIELD-PACK™ AK CLASS 4 AK



Shield-Pack™ AK Class 4

BENEFITS

- Standard AK interface
- High robustness against vibrations
- Higher operating temperatures

FEATURES

- Header compatible with both straight & right angle female connector
- Connector and header design according to AK interface specification and LV215 latest revision
- Individual shielded cables
- Fully interchangeable with other AK supplier sources



AVAILABLE CONFIGURATIONS

Connector Type	Wire-to-device
Cable Exit Orientation	90°, 180°
Cable Range (mm ²)	25 - 50
Terminal Type	8 mm round terminal
# of Power Terminals	2
Shielding	Individual
HVIL	Yes
Number of Indexes	4



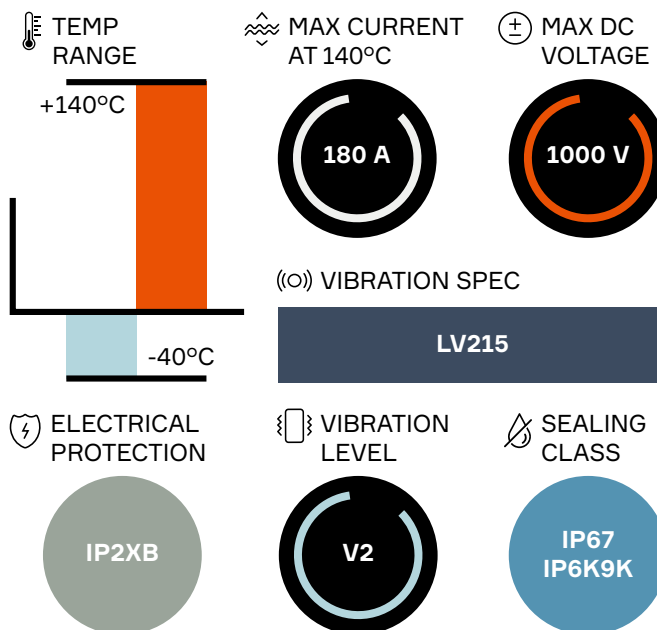
APPLICATIONS

High voltage / high current modules:
inverter, battery, junction box, power electric box

See back page for representative part numbers and packaging dimensions.



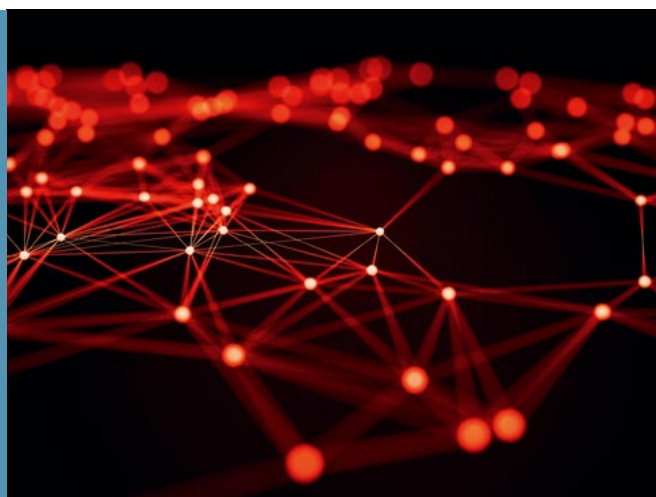
TECHNICAL CHARACTERISTICS



About Aptiv

Aptiv is a global technology company that develops safer, greener and more connected solutions enabling the future of mobility. Headquartered in Dublin, Aptiv has approximately 150,000 employees and operates 14 technical centers, as well as manufacturing sites and customer support centers in 45 countries.

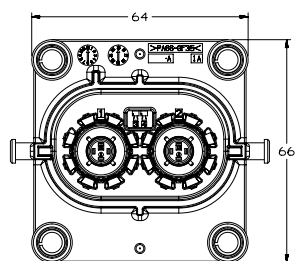
Visit aptiv.com



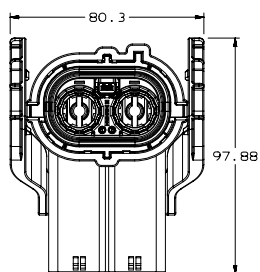
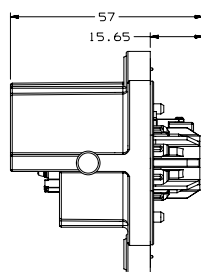
Part number	Gender	Type	Index	Mating part number
35166503	Male	Pin Header	A UL HB	33355781
35166504	Male	Pin Header	B UL HB	33355782
35166505	Male	Pin Header	C UL HB	33355783
35166506	Male	Pin Header	D UL HB	33355784
33351454	Male	Pin Header	A UL V0	-
33351455	Male	Pin Header	B UL V0	-
33355781	Female	Connector	A UL HB	35166503
33355782	Female	Connector	B UL HB	35166504
33355783	Female	Connector	C UL HB	35166505
33355784	Female	Connector	D UL HB	35166506



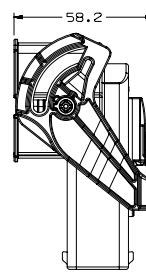
DIMENSION MEASUREMENT SAMPLE



35166503



33355781



Part numbers, specifications, dimensions and performance data in this document are for general references only and are subject to change without notice. To verify product information, please contact an Aptiv representative.