

Pi RTC (DS1307)

Product Overview

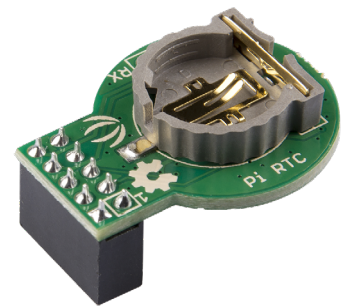
08/26/2022

For the most up-to-date information, visit www.mouser.com or the supplier's website.

Description

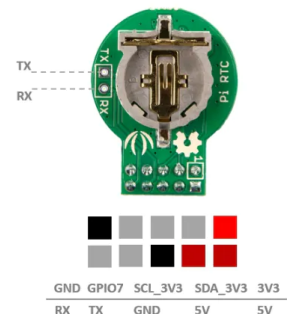
Seeed Studio Pi RTC (DS1307) is based on the clock chip DS1307 that can provide a Real-Time Clock(RTC) for Raspberry Pi via the I²C interface. The real-time clock of this module counts seconds, minutes, hours, date of the month, month, day of the week, and year with leap-year compensation valid up to 2100. The Pi RTC (DS1307) operates in either the 24-hour or 12-hour format with AM/PM indicator.

The Pi RTC tool detects automatic power-fail and incorporates switch circuitry. This module features programmable square-wave output signal and stores data through Non-Volatile (NV) RAM. The Pi RTC tool is available in 30mm x 23mm x 15mm dimensions and weighs about 13.2g.



Features

- Support Raspberry Pi 2/ 3 B/B+ Zero/4
- Support seconds, minutes, hours, day of week, month, and year
- Support 24-hour or 12-hour format with AM/PM indicator
- 56-byte, battery-backed, nonvolatile (NV) RAM for data storage
- Programmable squarewave output signal
- Automatic power-fail detect and switch circuitry



Mouser Part Number

[View Part](#)

To learn more, visit <https://www.mouser.com/new/seeed-studio/seeed-pi-rtc-dev-tool/>